



OPEN SERIES
MAP

Scale 1:50,000

1. Korba, CHHATTISGARH
2. Jashpur, CHHATTISGARH

SURVEY OF INDIA

Price : Rs. 85 /-

CONVENTIONAL SYMBOLS

Palms: Highway with toll, with bridge, with distance stone			
Roads, finished: according to traffic, with bridge			
Unsettled road, Carriage-way, according to importance			
Unsettled road, Carriage-way with pass, Foot-path			
Steam: with track in belt, unadorned Canal			
Dike: masonry or rock-built, water-work, Weir			
River, dry: with water channel with island & locks, Tidal river			
Submerged rocks, Shoal, Swamp, Rocks			
Water: inlet, surface, Tidal, Water, Spring, Tanka, perennial, dry			
Embankments: road or rail, track, Bank, ground			
Railway: double single, single with station, under current			
Railways, over ground: double single, single, stone, above, old			
Mineral line or narrow, Hilly, Cutting with tunnel			
Contours with sub-features, Rocky hills, Cliffs			
Dam features: (Flood, Glacis, Hilly, permanent) (Glacis) (glacis)			
Towers or pillars: inhabited, deserted, Fort			
Fort: permanent; temporary; Tower, Artillery			
Temples: Obelisk, Church, Mosque, light, Tomb, Graves			
Lighthouse, Lighthouse, Buoys: lighted, unlighted, Anchorage			
Mine, Vine on hills, Grass, Corn, Wheat			
Palms: platform, open, Plain, Canebrake, Bamboo, Other trees			
Area: open, open, open, open, open, open, open, open			
Boundary, International			
state: demarcated, undemarcated			
district: subdivided, half or third, forest			
Boundary points: surveyed, uncalculated			
Height, triangulated station, point; approximate			
Benchmark, geodetic, levary; canal			
Post, Telegraph, office, Overland track			
Rail: horse or iron; long; short; short; short; short; short; short; short			
Real: horse or iron; long; short; short; short; short; short; short; short			
Camp: ground, Forest, military, local, or tribal			
Police: ground, Forest, military, local, or tribal			
Armed: Helicopter, Foot, Horse, or other			
Power: line with poles surveyed with poles unsurveyed			

REFERENCE

PWD Public Works Department

NOTES :-

Heights are in metres and above Indian mean sea level.
Contours are approximate.
A relative height, n.g., represents the approximate height, in metres, between the top and bottom of a steep slope.
Tanks shown dry, in this area usually contain water from July to December.

COMPILATION INDEX

A. Surveyed during 1983-89. Updated for major details during 2000-03



Projection - UTM Datum - WGS 84

Magnetic Variation from True North about $\frac{1}{2}^{\circ}$ West in 2005
(Decreasing by about $1'$ annually)

1:50.000

CONTOUR INTERVAL 20 METRES

For further details about this map, please contact:

Director

Chhattisgarh Geo-Spatial Data Centre

Survey of India, Pachpedi Naka
Bairpur

Polpa,

MEASUREMENT OF THE EFFECTS OF...

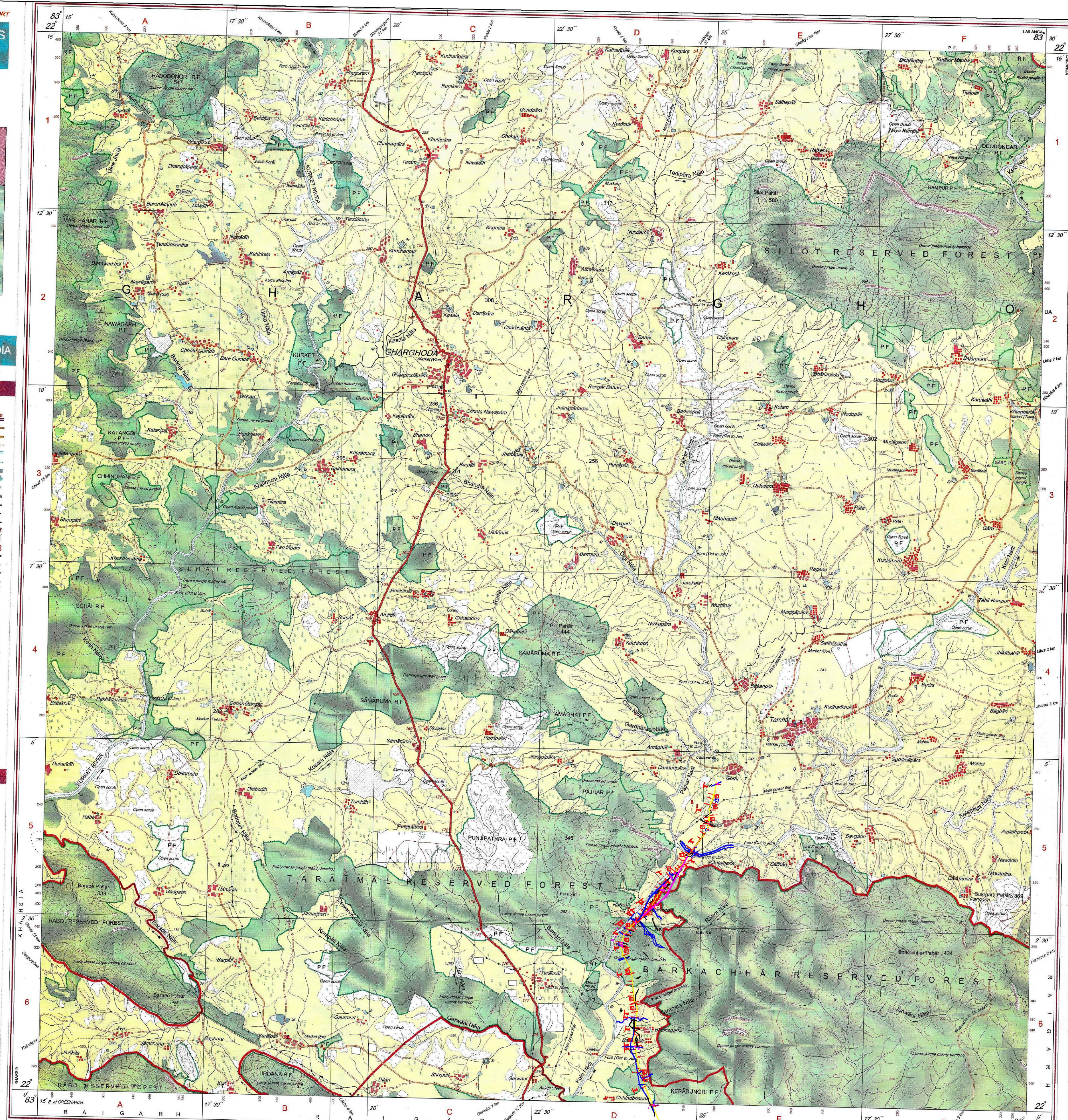
WEBSITE : www.surveyofindia.gov.in

in whole or part by any means is p
 tion permission of ©

With permission of Survey of India,
Publishing Agency.

ing Agency.

OF INDIA COPYRIGHT, 2012.



REG. No. 9657 SPG D '11 (Chhattisgarh GDC-150,000)-015 17

भारत के महत्त्वपूर्ण डॉ. स्वर्ण सुब्बा राव, के निदेशन में प्रकाशित,
Published under the direction of Dr. Swarna Subba Rao, Surveyor General
Survey of India, Hathi Barkala Estate, Post Box No. 37, Dehra Dun - 248
Department of Science & Technology, Government of India

PRINTED AT THE SOUTHERN PRINTING GROUP OF SURVEY OF INDIANA