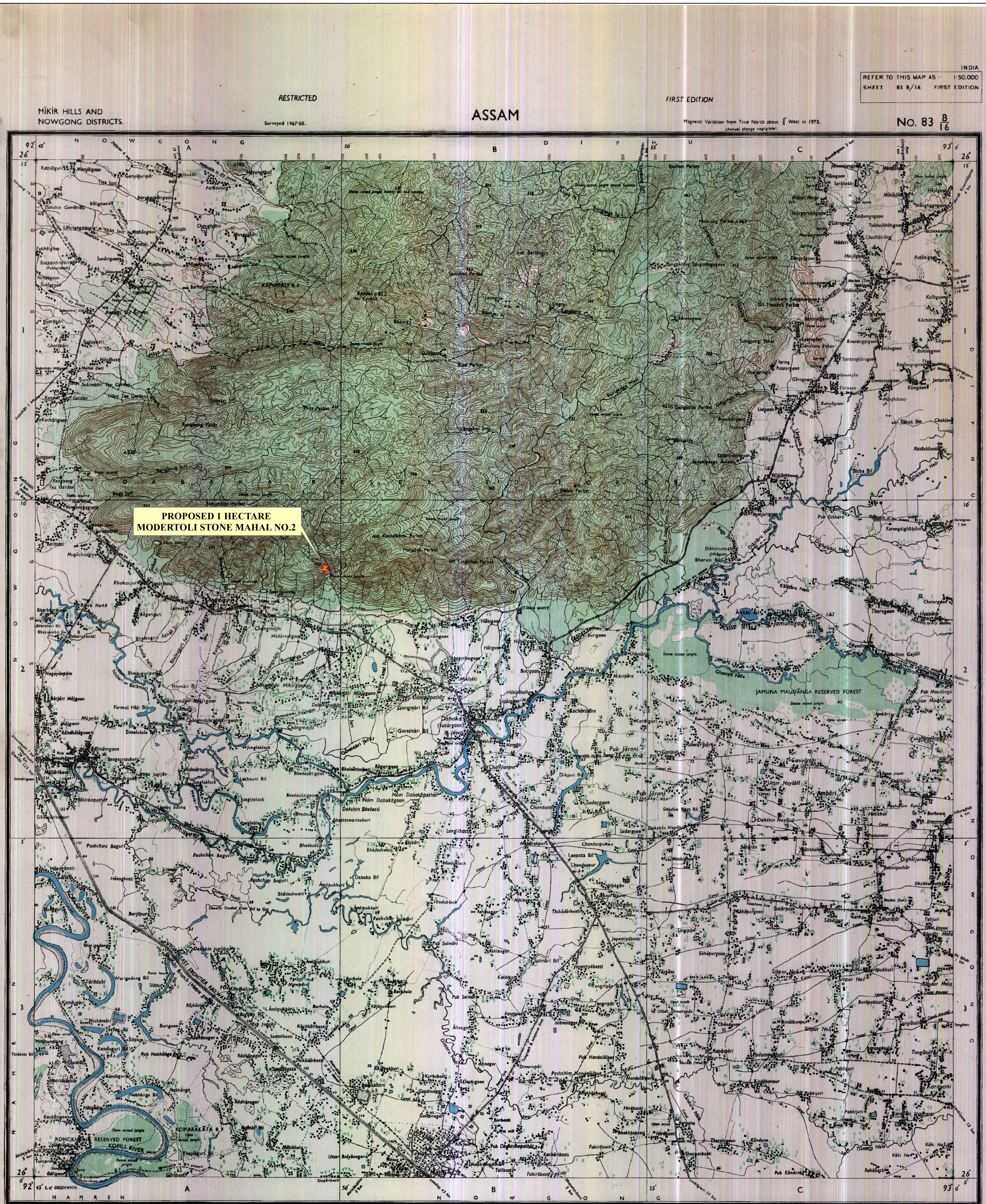


MAP SHOWING THE PROPOSED 1 HECTARE MODERTOLI STONE MAHAL NO.2 AT DOBOKA R.F. UNDER NAGAON SOUTH DIVISION



GPS CO-ORDINATES OF PROPOSED STONE MAHAL AREA

GPS POINTS	LONGITUDE	LATITUDE	NAME OF MAHAL
1	92° 49' 43.812" E	26° 8' 56.834" N	MODERTOLI STONE MAHALNO. (2)
2	92° 49' 46.352" E	26° 8' 59.139" N	
3	92° 49' 44.397" E	26° 9' 1.947" N	
4	92° 49' 41.858" E	26° 8' 59.641" N	

Legend

- G.P.S. POINT
- PROPOSED STONE MAHAL AREA