

निर्यात के लिए नहीं NOT FOR EXPORT

OPEN SERIES
MAP

No. F44R5

Scale 1:50,000

1 Surquja, CHHATTISGARH






भारतीय सर्वेक्षण विभाग

SURVEY OF INDIA

1st Edition 2009

Price : Rs. 50 /-

CONVENTIONAL SYMBOLS

Gorges highway; with toll; with bridge; with distance stone    20
 Roads, metalled; according to importance   
 Roads, double carriage-way; according to importance   
 Unmetalled road; Cut-track. Pack-track and pass, Foot-path    
 Streams: with track in bed; underground. Canal  
 Dams: masonry or rock-filled; earthen. Work   
 River: dry with water channel; with island & rocks. Tidal river   
 Submerged rocks. Shoal. Swamp. Reeds    
 Wells: lined; unlined. Tube-well. Spring. Tanks: perennial; dry     
 Embankments: road or rail; tank. Broken ground    
 Airways, broad gauge; double; single with station; under construction    
 Railways, other gauges; double; single with distance stone; do      20 RS
 Mineral line or tramway. Kils. Cutting with tunnel    
 Contours with sub-feetings. Rocky slopes. Cliffs    
 Sand features: (flats) (sand-hills) (perennial) (discontinuous) (shifting)     
 Towns or Villages: inhabited; deserted. Fort    
 Huts: permanent; temporary. Tower. Antiquities     
 Mosque, Chhatr, Church, Mosque, Jhalra, Tomb, Graves       
 Lighthouses. Lighthouse. Buoy; lighted; unlighted. Anchorage      
 Mine. Vine on trellis. Grass. Scrub    
 Palms: palmyra; other. Plantain. Conifer. Bamboo. Other trees       
 Areas: cultivated; wooded. Surveyed tree    
 Boundary, international  
 " state; demarcated; undemarcated   
 " district; subdivision, taluk or taluk; forest    
 Boundary, private; surveyed; unlocated    
 Heights, triangulated; station; point; approximate.      2,200 2,200 2,200
 Bench-mark; geodetic; tertiary; casual     BM 63.3 BM 63.3 63
 Post office. Telegraph office. Overhead tank   
 Rest house or inspection bungalow. Circuit house. Police station    
 Camping ground. Forest: reserved; protected   

REFERENCES

NH 200 National Highway No. 200. PWD Public Works Department.

NOTES :-

NOTES :-

Heights are in metres and above Indian mean sea level.

Contours are approximate.

A relative height, $\&$, represents the approximate height, in metres, between the top and bottom of a steep slope.

The triangulated heights and contours in this sheet have not been adjusted to the heights of the levelled bench-marks and may not be in accordance with them.

The common boundary between Rābō Rāf and Urdānā Rāf in squares A/1, B/1 & C/1 has not been shown for want of reliable information.

The state boundary between Chhattisgarh and Orissa States has been surveyed as pointed out by the local officials on the ground but has not been verified by the Governments concerned.

The exterior boundaries of areas of Reserved or Protected Forests are shown by green ribands.

Hand Map is shown thus.....

COMBILATION INDEX

A. Compiled from 1:25,000 survey 1979-80. Updated for major details.

Projection – UTM Datum – WGS 84

Magnetic Variation from True North about $\frac{1}{2}^{\circ}$ West in 2005.
(Decreasing by about 1' annually).

1:50.000

500 m to 1 km 1:50,000 2 cm to 1 km.

Metres 1000 500 0 1 2 3 Kilometres

CONTOUR INTERVAL 10 METRES

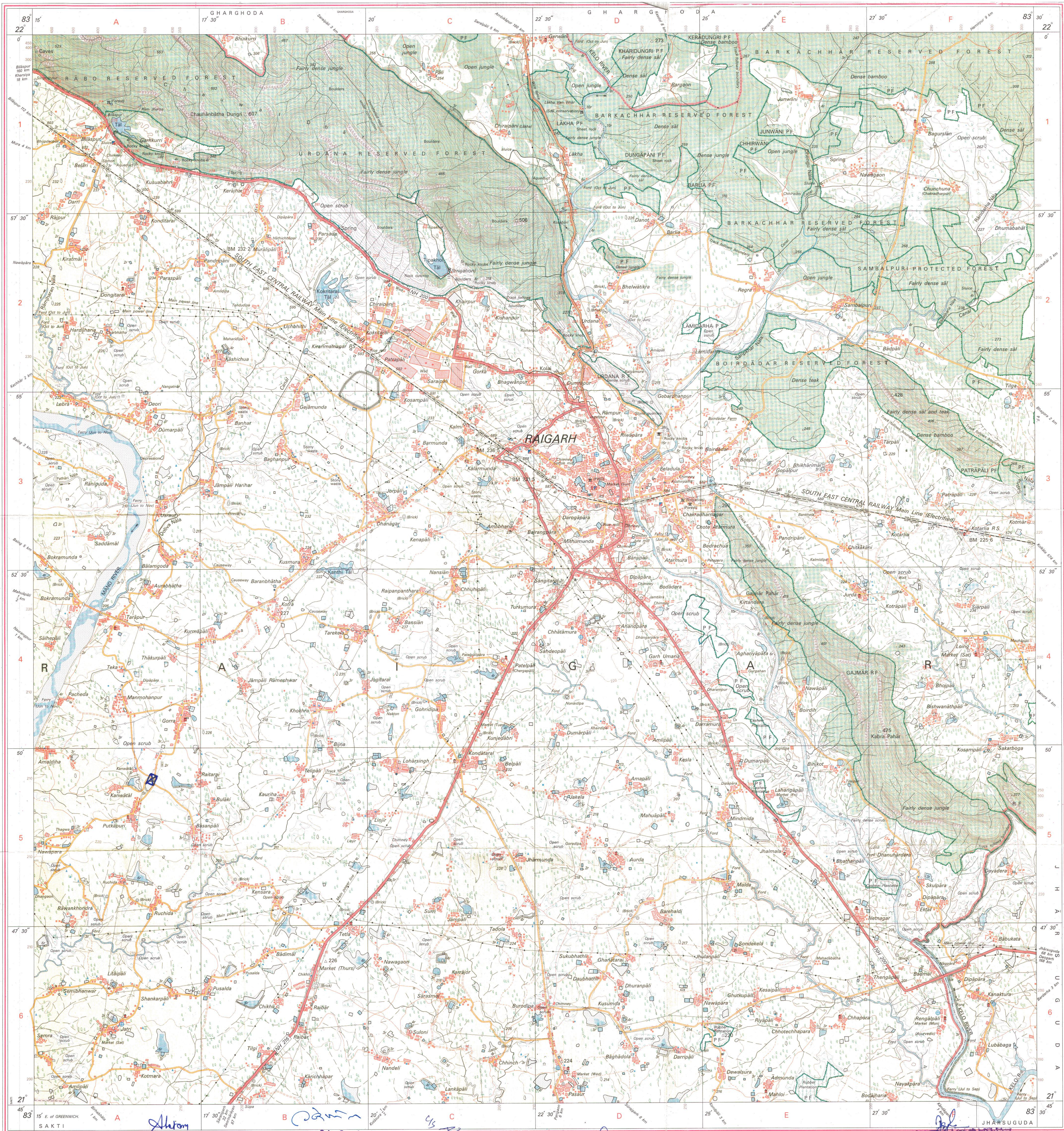
For further details about this map, please contact

Director
Orissa Geo-Spatial Data Centre
Survey of India
Survey Bhawan, PO - R R Laboratory
Bhubaneswar-751013
Fax : 0674 - 2301418

WEBSITE – www.surveyofindia.gov.in

Reproduction in whole or part by any means is prohibited without the written permission of Survey of India, the National Mapping Agency.

GOVERNMENT OF INDIA COPYRIGHT, 2009.



REG. No. 8410-SPG-D-09 (Orig. GDC-1:50,000)-1015

Executive Engineer (Civil-Trans)
Division, C.S.P.T.C.L. Raigarh

कन्य परिक्षेत्राधिकारी
सुथमद परिक्षेत्र

THE GREAT GIBBERN

भारत के महासर्वेक्षक के निदेशन में प्रकाशित,
under the direction of Surveyor General of India
Kalka Estate, Post Box No. 37, Dehra Dūn-248001
Department of Science & Technology, Government of India

व्यवस्थापक निदेशिका

☒ - PROPOSED SUBSTATION 132/33 KV
KODATARAI (PUTKAPURI) RAIGAD

सिंहारकालीमयतीससिविल
PRINTED AT THE SOUBHAGYAPRINTING GROUP OF SURVEY OF INDIA.
सिविल पारखण भाग
छ.ग.रा.वि.पा.क.मयदित
नायगद छ.ग.रा.