

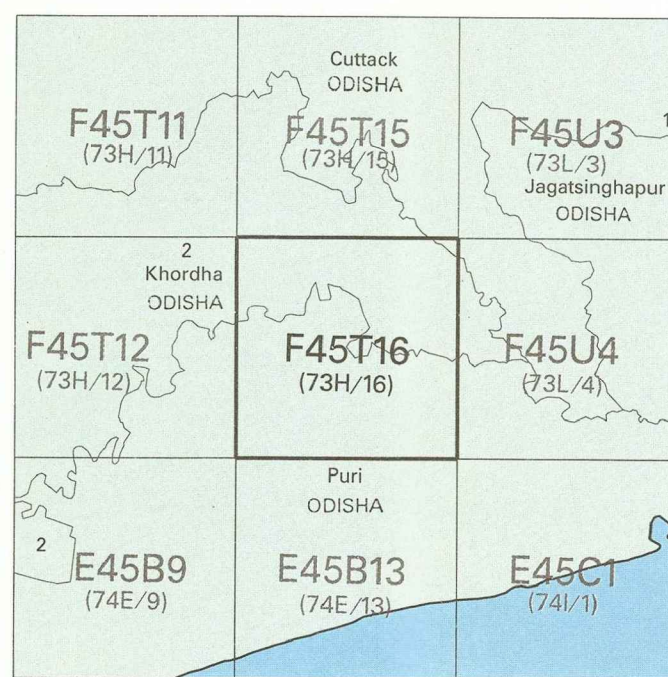


निर्यात के लिए नहीं NOT FOR EXPORT

OPEN SERIES  
MAP

No. F45T16

Scale 1:50,000



भारतीय सर्वेक्षण विभाग

SURVEY OF INDIA

1st Edition 2012.

PRICE ₹116/-

#### CONVENTIONAL SYMBOLS

Express highway, with toll; with bridge, with distance stone		20
Roads, metalled: according to importance		
Unmetalled road, Cart-track, Pack-track with pass, Foot-path		
Stream: with track in bed, unfilled, Canal		
Dams: masonry or rock-filled, earthwork, Wall		
Submerged rocks, Shoal, Swamp, Reeds		
Wells: lined, unlined, Tube-well, Spring, Tank, perennial, dry		
Embankments: road or rail; tank, Broken ground		
Railways, broad gauge: double, single with station, under construction		
Railways, other gauges: double, single with distance stone; do		
Mineral line or tramway, K.M., Cutting with tunnel		
Contours with sub-features, Rocky slopes, Cliffs		
Sand features: (1) flat, (2) wind-hill (permanent), (3) dunes (shifting)		
Towns or Villages: inhabited; deserted; Fort		
Huts: permanent; temporary, Tower, Antiquities		
Temple, Church, Mosque, Igloo, Tomb, Graves		
Lighthouse, Lightship, Buoy: lighted, unlighted, Anchorage		
Mine: Vine on trellis, Grass, Scrub		
Palms: palm-tree, other, Plantain, Conifer, Bamboo, Other trees		
Areas: cultivated, wooded, Surveyed tree		
Boundary, international		
state: demarcated, undemarcated		
district: subdivided, taluk or block, forest		
Boundary pillars: surveyed, unvisited		
Heights, elevations: metric, point, approximate		200 200 200
Bench-mark: geodetic, tertiary, canal		B.M. 63.3 B.M. 63.3 B.M. 63.3
Post office, Telegraph office, Overhead tank		
Rest house or inspection bungalow, Guard house, Police station		
Camping ground, Forest: reserved, protected		
Spaced names: administrative, locality or tribal		KIKRI NAGA
Hospital, Dispensary, Veterinary Hospital / Dispensary		
Airfield, Helipad, Tourist site		
Power line: with pylons surveyed, with poles unsurveyed		

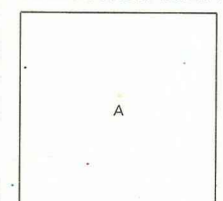
#### REFERENCES

PWD Public Works Department, A.H. 5 National Highway No. 5.

#### NOTES

Heights and contours have not been shown.  
Important buildings are shown in black with names.  
A relative height,  $\Delta$ , represents the approximate height, in metres, between the top and bottom of a steep slope.  
A relative height, e.g., 30, marked along a canal, indicates the height of the top of the canal embankment above the adjacent country.  
Hand Pump is shown thus:

#### COMPILED INDEX



Projection - UTM Datum - WGS 84

Magnetic Variation from True North about 2° West in 2010.  
(Annual change negligible)

1:50,000

500 m to 1 cm 2 cm to 1 km

For further details about this map, please contact

Director

Odisha Geo-Spatial Data Centre

Survey Bhawan, PO - R.R. Laboratory

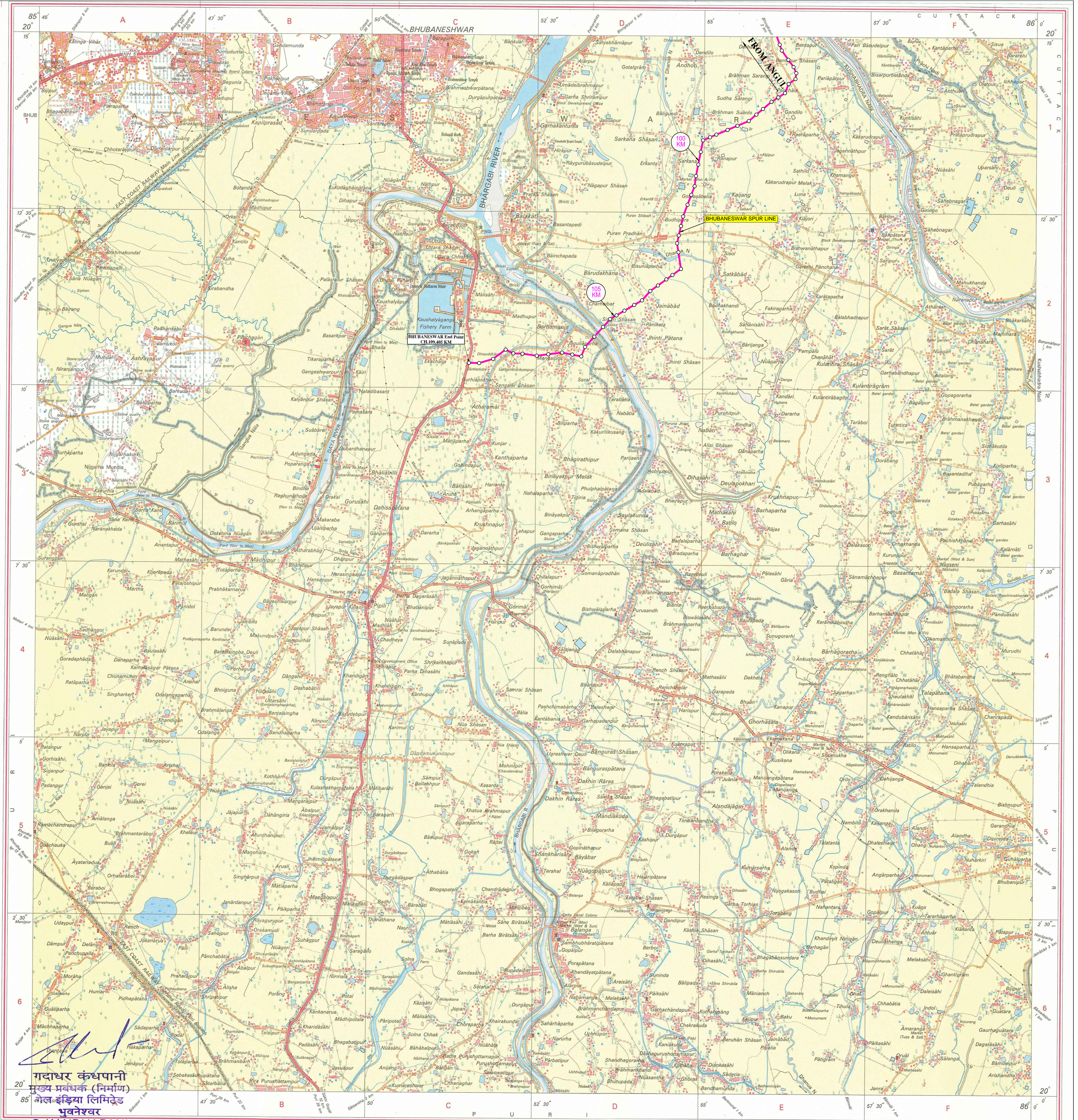
Bhubaneswar - 751013

Fax : 0674 - 2301418

WEBSITE - www.surveyofindia.gov.in

Reproduction in whole or part by any means is prohibited  
without the written permission of Survey of India, the  
National Mapping Agency.

GOVERNMENT OF INDIA COPYRIGHT, 2012.



गदाधर कंधपानी  
मुख्य प्रबंधक (निर्माण)  
भारतीय सर्वेक्षण विभाग  
भुवनेश्वर  
G. KANDHAPANI  
Chief Manager (Const.)  
GAIL (India) Ltd.  
Bhubaneswar

भारत के सर्वेक्षण, डॉ. सर्वेक्षण विभाग के निदेशन में प्रकाशित.  
Published under the direction of Dr. Swarna Subba Rao, Surveyor General of India,  
Survey of India, Hattibarkala Estate, Post Box No. 37, Dehra Dun - 248001 (Uttarakhand),  
Department of Science & Technology, Government of India.

PRINTED AT THE SOUTHERN PRINTING GROUP OF SURVEY OF INDIA.

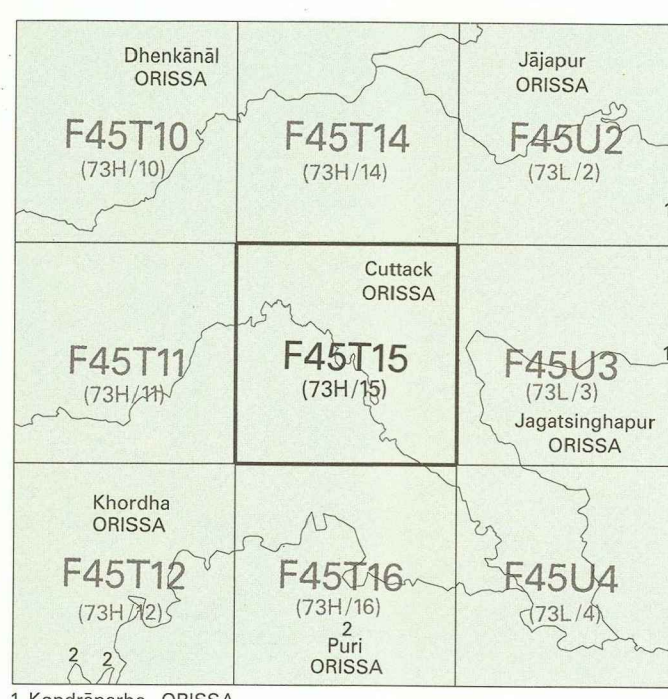


निर्यात के लिए नहीं NOT FOR EXPORT

OPEN SEP  
MAP

No. F45T15

Scale 1:50,000



भारतीय सर्वेक्षण विभाग

SURVEY OF INDIA

1st Edition 2011

**PRICE ₹118/-**

### CONVENTIONAL SYMBOLS

Turns, highway: with and bridge; with distance scale		20
Roundabout, according to importance		
Turns, double carriageway: according to importance		
Unsettled road: track-bed, Puck-track with pass, Foot-path		
Dams: with track in bed; undammed Canal		
Dike: masonry or rock-filled; earthenwork, Wall		
River: dry with water channel; with island & shoals, Tidal river		
Submerged rocks, Shoal, Swamp, Reeds		
Wells: lined; unlined; Two-well; Spring; Taps: perennial; dry		
Embankment: road or rail; tank, Broken ground		
Railways, broad gauge; double; single with station; under concern		25
Railways, other gauges; double; single with distance stone; do.		
Mineral line or tramway, Kink, Cutting with tunnel		
Contours with sub-features. Rocky slopes, Cliffs		
Soil features: (f) flat; (2) sand-hills (permanent); (3) dunes (shifting)		
Towns or Villages: inhabited; deserted, Fort		
Temple; permanent; temporary; Tower, Antiquities		
Musee, Chhani, Church, Mosque, Jhal, Tomb, Graves		
Lighthouse, Lightship, Buoy, Lighted; unlighted, Anchorage		
Mine, Vine or trellis, Grass, Scrub		
Palm: palmyra; other, Plantain, Corn, Bamboo, Other trees		
Area: cultivated; wooded, Surveilled tree		
Boundary, international		
Boundary, national or provincial		
- district subdivision, small or ill-defined		
Height: figures surveyed, uncorrected		
Bouglas triangulated station; spot, approximate		200
Bench-mark: geological; tertiary; canal		BM 633
Post, Telegraph office, Overhead tank		
Rest house or Inspection bungalow, Circuit house, Police station		
Camping ground, Forest: reserved; protected		
Spaced names: administrative; locality or tribal		KIKRI
Hospital, Dispensary, Veterinary hospital / Dispensary		
Aerodrome, Heliped, Tourist a/c		
Power line: with pylons surveyed; with poles unsurveyed		

## REFERENCES

NH 5 National Highway No. 5.  
PWD Public Works Department.  
R&B Roads and Building.  
Hosp Hospital.

NOTES :-

Heights and contours have not been shown.  
Important buildings are shown in black with names.  
The common boundary of the Protected Forest between Bharatpur P.F. & Nulapali P.F. in square S/5 has not been shown for want of reliable information.  
A relative height, e.g., represents the approximate height, in metres, between the top and bottom of a steep slope.  
A relative height, e.g.,  $m_1$  marked along a canal, indicates the height of the top of the canal embankment above the adjacent country.  
The administrative boundaries in this sheet have been surveyed as pointed out by the local officials on the ground but have not been authenticated by the authorities concerned.  
The forest boundaries in this sheet have been surveyed as pointed out by the local forest officials on the ground but have not been authenticated by the Divisional Forest Officers concerned.  
There is shown in this sheet

Hand Pump is shown thus .

COMPILATION INDEX

A. Compiled from 1:25,000 survey 1988-89. Updated for major details from 2002-2003, 2005-06 & 2008-09 surveys and Bhujneshwar Guide map surveyed 2008-09.

Projection - UTM Datum - WGS 84

Magnetic Variation from True North about  $\frac{3}{4}^{\circ}$  West in 2005.  
(Annual change negligible).

1:50,000

500 m to 1 km			1.00,000	2 km to 1 km		
Metres	1000	500	0	1	2	3 Kilometres

For further details about this map, please contact

Director

Orissa Geo-Spatial Data Centre

Survey of India

Survey Bhawan, PO – R R Laboratory  
Rhubanagar, 751012

Fax : 0674 - 2301418

Fax : 0074 - 2301416

WEBSITE – [www.surveyofindia.gov](http://www.surveyofindia.gov)

the whole or part by any means

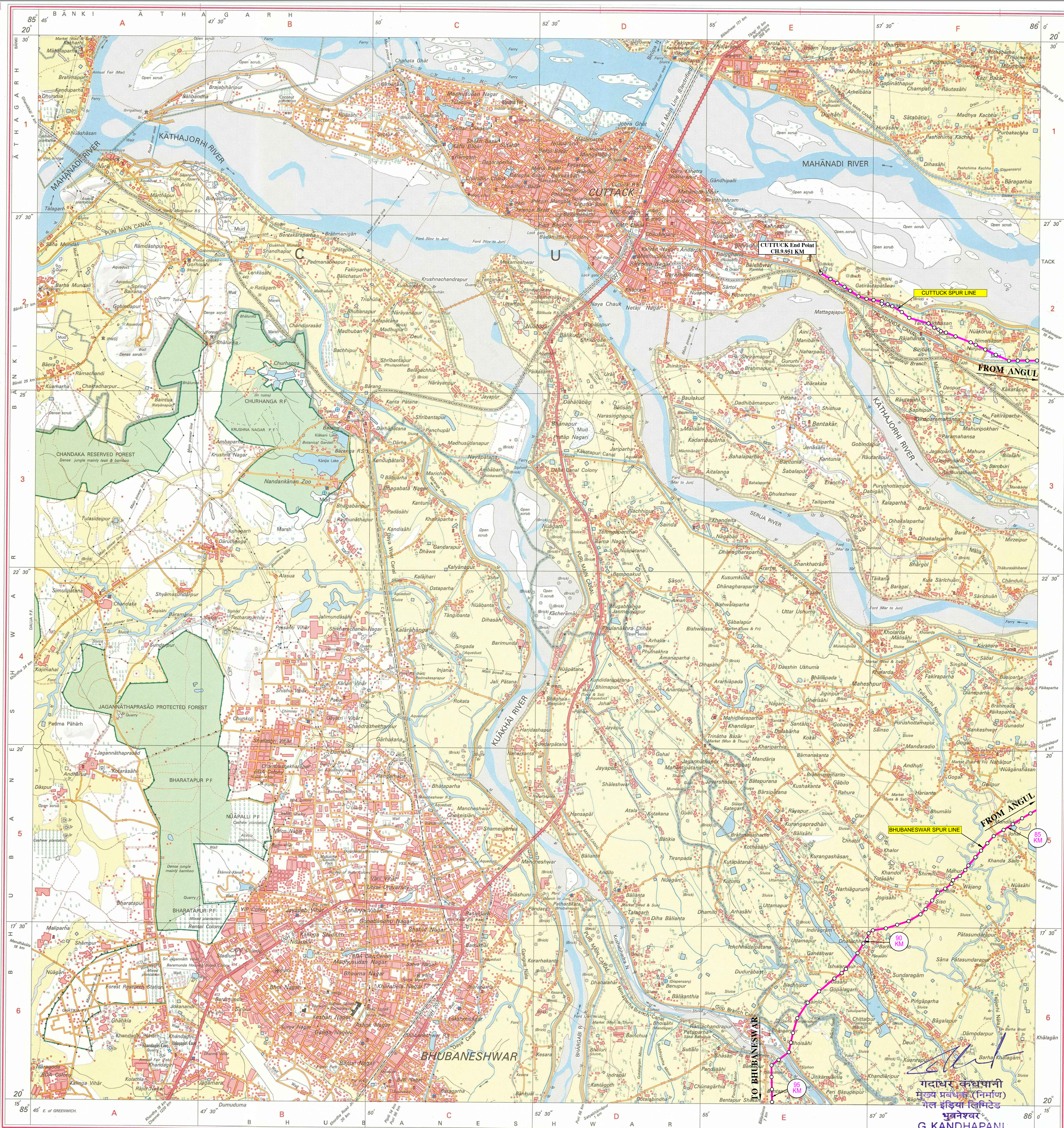
without the written permission of Survey of

Written permission of Survey or  
Rating Agency

ing Agency.

F INDIA COPYRIGHT, 2011.

---



REG. No. 373-SPG/D/11 (Odisha GDC-1:50,000)-1015/15.

भारत के महासर्वेक्षक डॉ. स्वर्ण सुब्बा राव, के निदेशन में प्रकाशित,  
Published under the direction of Dr. Swarna Subba Rao, Surveyor General of India,  
Survey of India, Hathibarkala Estate, Post Box No. 37, Dehra Dūn - 248001 (Uttarakhand),  
Department of Science & Technology, Government of India.

गदधारी कंधापानी  
मुख्य प्रबंधक (निर्माण)  
गेल इंडिया लिमिटेड  
भुवनेश्वर  
G. KANDHAPANI  
Chief Manager (Const.  
PRINTED AT THE SOUTHERN PRINTING GROUP LTD  
GAIL (India) Ltd.  
Bhubaneswar