

No. F4406  
Scale 1:50,000

F4401 (64C/1)	F4405 (64C/5)	F4409 (64C/9)
F4402 (64C/2)	F4406 (64C/6)	F44010 (64C/10)
F4403 (64C/3)	F4407 (64C/7)	F44011 (64C/11)

सर्वेक्षण विभाग SURVEY OF INDIA  
1st Edition 2010. Price : Rs.50/-

**CONVENTIONAL SYMBOLS**

**NOTES :-**  
metres and above Indian mean sea level.  
approximate.  
ary between Madhya Pradesh and Maharashtra states has been surveyed as pointed out  
ials on the ground but has not been verified by the Maharashtra Government.  
t. 3x, represents the approximate height, in metres, between the top and bottom of a  
ds along Bāgh Bank Canal and Karakna & Dhudwa distributaries embankment are shown  
nooks; these are usually moturable in dry season.  
g. 6; marked along a canal, indicates the height of the canal embankment above  
rmy.

**INDEX**  
A Surveyed during 1976-77. Updated for major details during 2005-06.

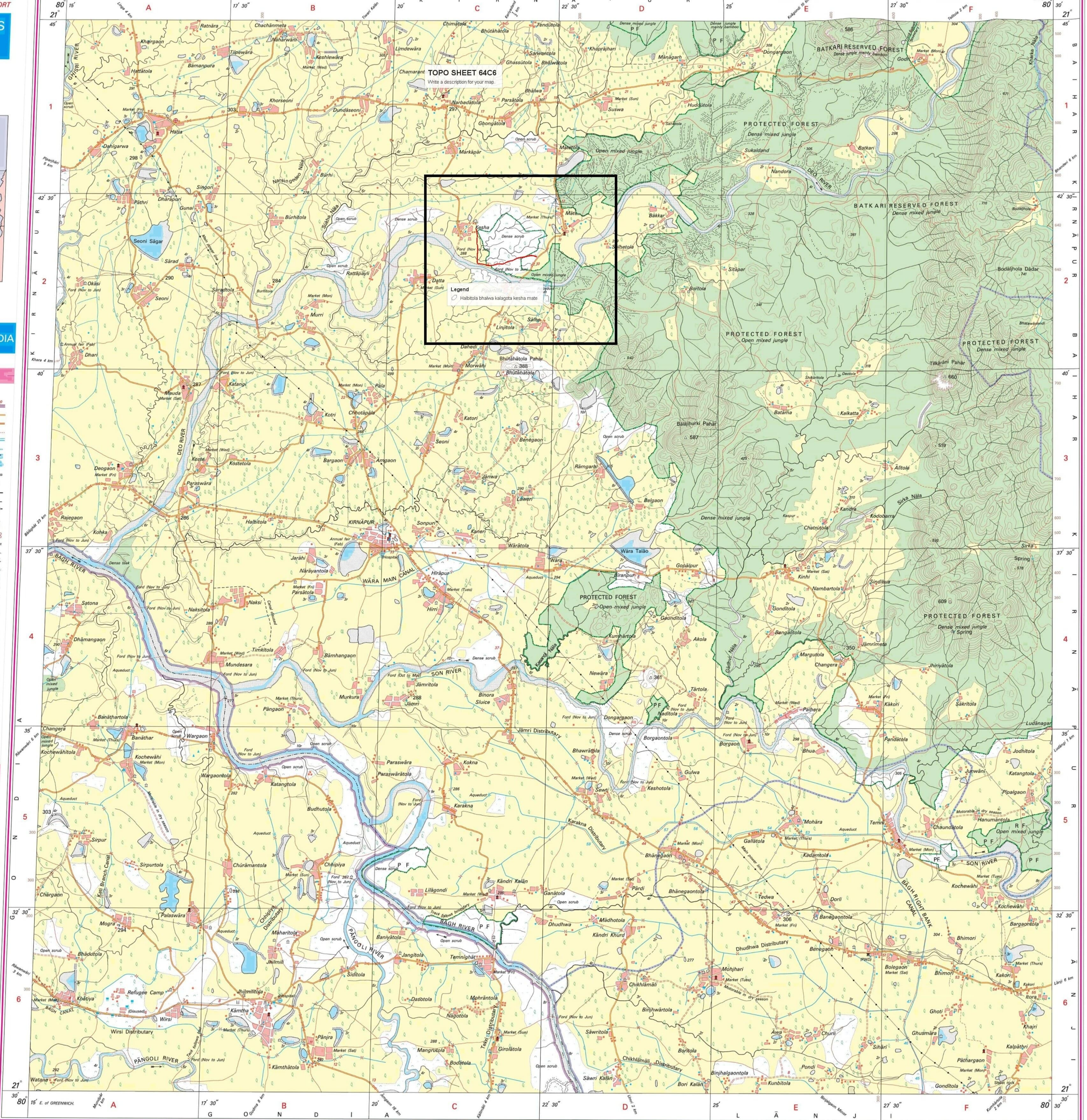
Projection - UTM Datum - WGS 84  
Magnetic Variation from True North about  $\frac{3}{4}^{\circ}$  West in 2005.  
(Decreasing by about  $\frac{1}{4}^{\circ}$  annually).

Scale: 1:50,000  
0 1 2 3 Kilometres  
0 1 2 3 Miles

CONTOUR INTERVAL 20 METRES

For further details about this map, please contact  
Director  
Madhya Pradesh Geo-Spatial Data Centre  
Survey of India  
Survey Colony, Vijaynagar  
Jabalpur.

WEBSITE - www.surveyofindia.gov.in  
in whole or part by any means is prohibited  
written permission of Survey of India, the  
pping Agency.



Assistant Manager  
M.P.R.R.D.A.  
P.I.U.-1, Balaghat

General Manager  
M. P. R. R. D. A.  
P. I. U. -1, Balaghat