

निर्वात के लिए नहीं NOT FOR EXPORT

RESTRICTED

उड़ीसा  
ORISSA

FIRST EDITION

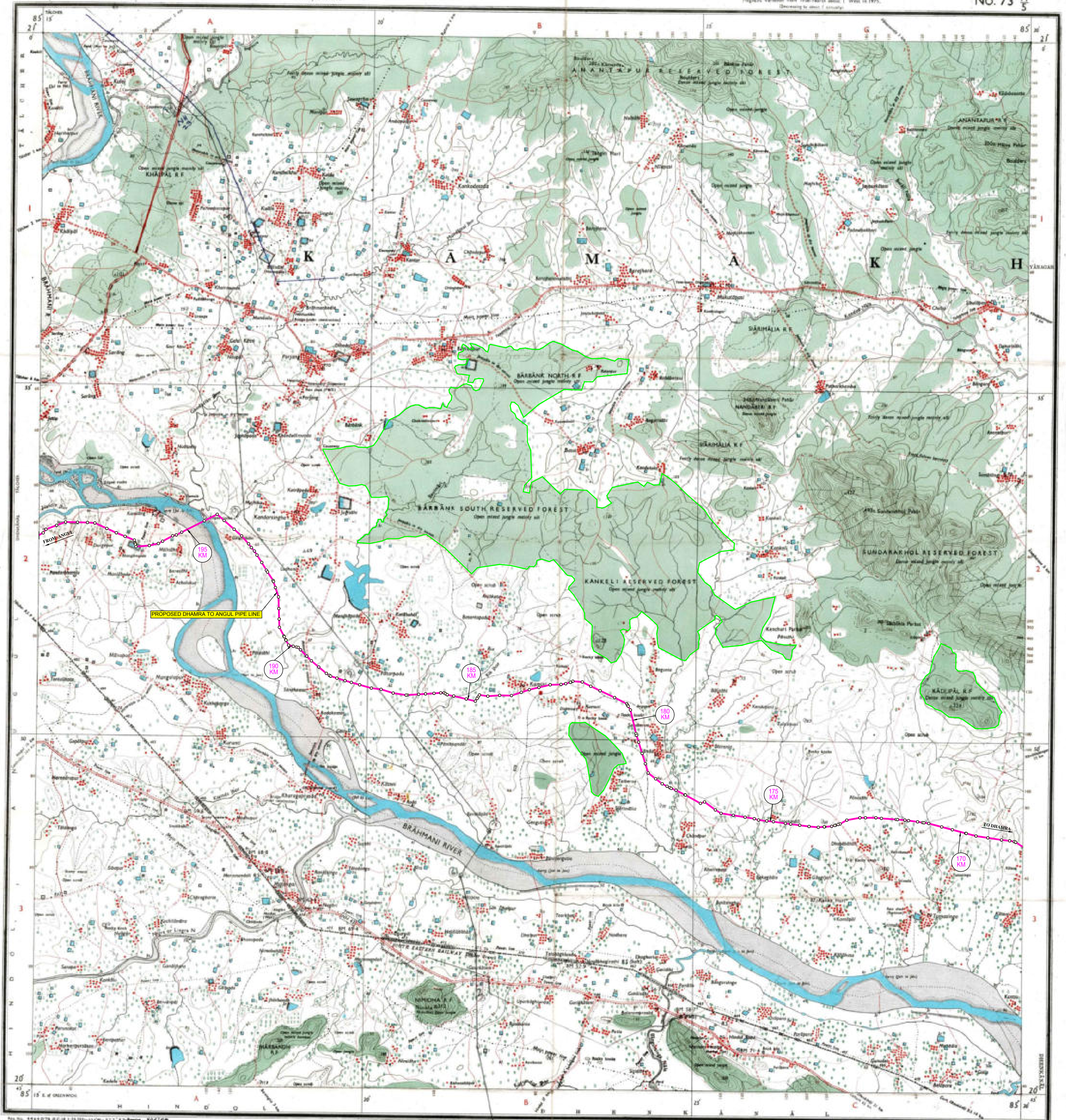
भारत INDIA  
REFER TO THIS MAP AS 1:50,000  
SHEET 73 H/5 FIRST EDITION

DHENKANĀL DISTRICT.

Surveyed 1973-74

Represent Vertical from True Meridian about 7' West in 1975.  
(According to about 1' accuracy)

No. 73 H/5



सूचक चिह्न (Symbol Index)

सड़क (Road)	रेलवे लाइन (Railway Line)	नदी (River)	खेत (Field)
...	...	...	...

Index to Sheet

72 1/2	73 1/2	74 1/2
72 1/2	73 1/2	74 1/2
72 1/2	73 1/2	74 1/2

सूचक चिह्न (Symbol Index)

1:50,000

HEIGHTS & CONTOURS IN METRES

CONTOUR INTERVAL 20 METRES

...

...

...

...

...

...

...

...

...

...

...

...

...

...

...

...

...

...

...

...

...

...

...

...

...

...

...

...

...

...

...

...

...

...

...

...

...

...

...

...

...

...

...

...

...

...

...

...

...

...

...

...

...

...

REFER TO THIS MAP AS 1:50,000  
SHEET 73 H/5 FIRST EDITION

INDIA

REFERENCES

गंधपानी  
मुख्य प्रबंधक (निर्माण)  
गैल इंडिया लिमिटेड  
भुवनेश्वर  
G. KANDHAPANI  
Chief Manager (Const.)  
GAIL (India) Ltd.  
Bhubaneswar

RESTRICTED  
This map is NOT to be published, copied or reproduced in print or in any other form without the permission of the Survey of India.



RESTRICTED

# ORISSA

FIRST EDITION

नवीन के लिए नवी  
NOT FOR EXPAN

INDIA  
REFER TO THIS MAP AS  
SHEET 73 H/14 FIRST EDITION

No. 73 H/14

CUTTACK & DHENKANAL DISTRICTS.

Surveyed 1948-70

Project: Variation from True North about 7' West in 1975.  
Distortion to about 1' at any one place.



Index to Sheet

150	155	160
165	170	175
180	185	190
195	200	205

Index to Sheet

150	155	160
165	170	175
180	185	190
195	200	205

Scale 1:50,000  
1 cm = 1 km  
1 inch = 16.09 km

HEIGHTS & CONTOURS IN METRES  
CONTOUR INTERVAL 30 METRES

\*When heights are shown in the above they generally indicate water.  
\*Contours are shown in the above they generally indicate water.  
\*Contours are shown in the above they generally indicate water.

\*When heights are shown in the above they generally indicate water.  
\*Contours are shown in the above they generally indicate water.  
\*Contours are shown in the above they generally indicate water.

\*When heights are shown in the above they generally indicate water.  
\*Contours are shown in the above they generally indicate water.  
\*Contours are shown in the above they generally indicate water.

\*When heights are shown in the above they generally indicate water.  
\*Contours are shown in the above they generally indicate water.  
\*Contours are shown in the above they generally indicate water.

\*When heights are shown in the above they generally indicate water.  
\*Contours are shown in the above they generally indicate water.  
\*Contours are shown in the above they generally indicate water.

Index to Sheet

150	155	160
165	170	175
180	185	190
195	200	205

Index to Sheet

150	155	160
165	170	175
180	185	190
195	200	205

REFER TO THIS MAP AS  
SHEET 73 H/14 FIRST EDITION

INDIA

REFERENCE  
No. 1 Second Edition No. 1

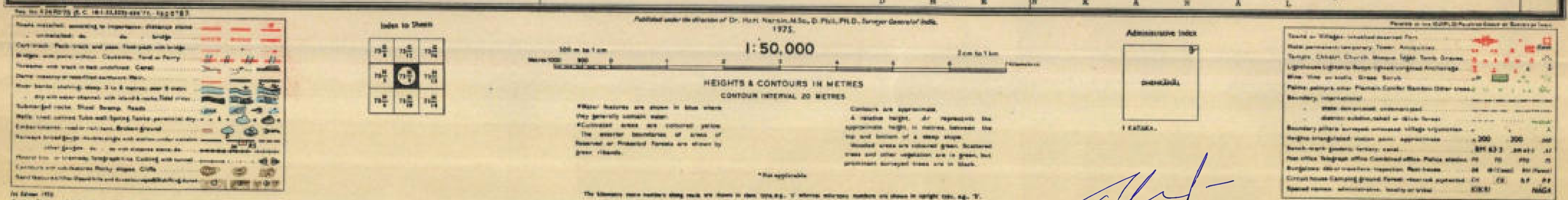
गदाधर कंधानी  
मुख्य प्रबंधक (निर्माण)  
गैल इंडिया लिमिटेड  
भुवनेश्वर  
G. KANDHAPANI  
Chief Manager (Const.)  
GAIL (India) Ltd.  
Bhubaneswar

RESTRICTED  
This map is NOT to be published, copied or reproduced in any form or by any means without the written permission of the Survey of India.









गदाधर कंधपानी  
मुख्य प्रबंधक (निर्माण)  
गेल इंडिया लिमिटेड  
भुवनेश्वर  
G. KANDHAPANI  
Chief Manager (Const.)  
GAIL (India) Ltd.  
Bhubaneswar

© GOVERNMENT OF INDIA COPYRIGHT, 1975

**RESTRICTED**  
This may be sold to the publisher, copied or reproduced in part or  
in whole either by photography or by any other means, without having  
to give notice and furnish the publisher's name.







निर्घटन के लिए नहीं NOT FOR EXPORT

OPEN SERIES  
MAP

No. F45T13

Scale 1:50,000



भारतीय सर्वेक्षण विभाग

SURVEY OF INDIA

East Gloucestershire 2008/9

Price : Rs. 70/-

### CONVENTIONAL SYMBOLS



## THE FUTURE

#### REFERENCES

**Keywords:** *workplace spirituality, organizational commitment, organizational trust, organizational identification, organizational citizenship behaviors*

NOTES >

lights are in meters, and above brack means map scale.  
distances are approximate.  
aquatic lifeforms are drawn in black with names.  
colours mean:  $\alpha$  - represents the approximate height, in meters, between the top and bottom of a  
step shape.  
to interpret numbers of areas of *Reinwardt* or *Stratton* *Parasitica* shown by genus symbols,  
and *Thurber* to illustrate them.  $\alpha$   $\beta$   $\gamma$   $\delta$   $\epsilon$   $\zeta$   $\eta$   $\theta$   $\iota$   $\kappa$   $\lambda$   $\mu$   $\nu$   $\xi$   $\pi$   $\rho$   $\sigma$   $\tau$   $\upsilon$   $\phi$   $\chi$   $\psi$   $\omega$   $\alpha$   $\beta$   $\gamma$   $\delta$   $\epsilon$   $\zeta$   $\eta$   $\theta$   $\iota$   $\kappa$   $\lambda$   $\mu$   $\nu$   $\xi$   $\pi$   $\rho$   $\sigma$   $\tau$   $\upsilon$   $\phi$   $\chi$   $\psi$   $\omega$   $\alpha$   $\beta$   $\gamma$   $\delta$   $\epsilon$   $\zeta$   $\eta$   $\theta$   $\iota$   $\kappa$   $\lambda$   $\mu$   $\nu$   $\xi$   $\pi$   $\rho$   $\sigma$   $\tau$   $\upsilon$   $\phi$   $\chi$   $\psi$   $\omega$   $\alpha$   $\beta$   $\gamma$   $\delta$   $\epsilon$   $\zeta$   $\eta$   $\theta$   $\iota$   $\kappa$   $\lambda$   $\mu$   $\nu$   $\xi$   $\pi$   $\rho$   $\sigma$   $\tau$   $\upsilon$   $\phi$   $\chi$   $\psi$   $\omega$   $\alpha$   $\beta$   $\gamma$   $\delta$   $\epsilon$   $\zeta$   $\eta$   $\theta$   $\iota$   $\kappa$   $\lambda$   $\mu$   $\nu$   $\xi$   $\pi$   $\rho$   $\sigma$   $\tau$   $\upsilon$   $\phi$   $\chi$   $\psi$   $\omega$   $\alpha$   $\beta$   $\gamma$   $\delta$   $\epsilon$   $\zeta$   $\eta$   $\theta$   $\iota$   $\kappa$   $\lambda$   $\mu$   $\nu$   $\xi$   $\pi$   $\rho$   $\sigma$   $\tau$   $\upsilon$   $\phi$   $\chi$   $\psi$   $\omega$   $\alpha$   $\beta$   $\gamma$   $\delta$   $\epsilon$   $\zeta$   $\eta$   $\theta$   $\iota$   $\kappa$   $\lambda$   $\mu$   $\nu$   $\xi$   $\pi$   $\rho$   $\sigma$   $\tau$   $\upsilon$   $\phi$   $\chi$   $\psi$   $\omega$   $\alpha$   $\beta$   $\gamma$   $\delta$   $\epsilon$   $\zeta$   $\eta$   $\theta$   $\iota$   $\kappa$   $\lambda$   $\mu$   $\nu$   $\xi$   $\pi$   $\rho$   $\sigma$   $\tau$   $\upsilon$   $\phi$   $\chi$   $\psi$   $\omega$   $\alpha$   $\beta$   $\gamma$   $\delta$   $\epsilon$   $\zeta$   $\eta$   $\theta$   $\iota$   $\kappa$   $\lambda$   $\mu$   $\nu$   $\xi$   $\pi$   $\rho$   $\sigma$   $\tau$   $\upsilon$   $\phi$   $\chi$   $\psi$   $\omega$   $\alpha$   $\beta$   $\gamma$   $\delta$   $\epsilon$   $\zeta$   $\eta$   $\theta$   $\iota$   $\kappa$   $\lambda$   $\mu$   $\nu$   $\xi$   $\pi$   $\rho$   $\sigma$   $\tau$   $\upsilon$   $\phi$   $\chi$   $\psi$   $\omega$   $\alpha$   $\beta$   $\gamma$   $\delta$   $\epsilon$   $\zeta$   $\eta$   $\theta$   $\iota$   $\kappa$   $\lambda$   $\mu$   $\nu$   $\xi$   $\pi$   $\rho$   $\sigma$   $\tau$   $\upsilon$   $\phi$   $\chi$   $\psi$   $\omega$   $\alpha$   $\beta$   $\gamma$   $\delta$   $\epsilon$   $\zeta$   $\eta$   $\theta$   $\iota$   $\kappa$   $\lambda$   $\mu$   $\nu$   $\xi$   $\pi$   $\rho$   $\sigma$   $\tau$   $\upsilon$   $\phi$   $\chi$   $\psi$   $\omega$   $\alpha$   $\beta$   $\gamma$   $\delta$   $\epsilon$   $\zeta$   $\eta$   $\theta$   $\iota$   $\kappa$   $\lambda$   $\mu$   $\nu$   $\xi$   $\pi$   $\rho$   $\sigma$   $\tau$   $\upsilon$   $\phi$   $\chi$   $\psi$   $\omega$   $\alpha$   $\beta$   $\gamma$   $\delta$   $\epsilon$   $\zeta$   $\eta$   $\theta$   $\iota$   $\kappa$   $\lambda$   $\mu$   $\nu$   $\xi$   $\pi$   $\rho$   $\sigma$   $\tau$   $\upsilon$   $\phi$   $\chi$   $\psi$   $\omega$   $\alpha$   $\beta$   $\gamma$   $\delta$   $\epsilon$   $\zeta$   $\eta$   $\theta$   $\iota$   $\kappa$   $\lambda$   $\mu$   $\nu$   $\xi$   $\pi$   $\rho$   $\sigma$   $\tau$   $\upsilon$   $\phi$   $\chi$   $\psi$   $\omega$   $\alpha$   $\beta$   $\gamma$   $\delta$   $\epsilon$   $\zeta$   $\eta$   $\theta$   $\iota$   $\kappa$   $\lambda$   $\mu$   $\nu$   $\xi$   $\pi$   $\rho$   $\sigma$   $\tau$   $\upsilon$   $\phi$   $\chi$   $\psi$   $\omega$   $\alpha$   $\beta$   $\gamma$   $\delta$   $\epsilon$   $\zeta$   $\eta$   $\theta$   $\iota$   $\kappa$   $\lambda$   $\mu$   $\nu$   $\xi$   $\pi$   $\rho$   $\sigma$   $\tau$   $\upsilon$   $\phi$   $\chi$   $\psi$   $\omega$   $\alpha$   $\beta$   $\gamma$   $\delta$   $\epsilon$   $\zeta$   $\eta$   $\theta$   $\iota$   $\kappa$   $\lambda$   $\mu$   $\nu$   $\xi$   $\pi$   $\rho$   $\sigma$   $\tau$   $\upsilon$   $\phi$   $\chi$   $\psi$   $\omega$   $\alpha$   $\beta$   $\gamma$   $\delta$   $\epsilon$   $\zeta$   $\eta$   $\theta$   $\iota$   $\kappa$   $\lambda$   $\mu$   $\nu$   $\xi$   $\pi$   $\rho$   $\sigma$   $\tau$   $\upsilon$   $\phi$   $\chi$   $\psi$   $\omega$   $\alpha$   $\beta$   $\gamma$   $\delta$   $\epsilon$   $\zeta$   $\eta$   $\theta$   $\iota$   $\kappa$   $\lambda$   $\mu$   $\nu$   $\xi$   $\pi$   $\rho$   $\sigma$   $\tau$   $\upsilon$   $\phi$   $\chi$   $\psi$   $\omega$   $\alpha$   $\beta$   $\gamma$   $\delta$   $\epsilon$   $\zeta$   $\eta$   $\theta$   $\iota$   $\kappa$   $\lambda$   $\mu$   $\nu$   $\xi$   $\pi$   $\rho$   $\sigma$   $\tau$   $\upsilon$   $\phi$   $\chi$   $\psi$   $\omega$   $\alpha$   $\beta$   $\gamma$   $\delta$   $\epsilon$   $\zeta$   $\eta$   $\theta$   $\iota$   $\kappa$   $\lambda$   $\mu$   $\nu$   $\xi$   $\pi$   $\rho$   $\sigma$   $\tau$   $\upsilon$   $\phi$   $\chi$   $\psi$   $\omega$   $\alpha$   $\beta$   $\gamma$   $\delta$   $\epsilon$   $\zeta$   $\eta$   $\theta$   $\iota$   $\kappa$   $\lambda$   $\mu$   $\nu$   $\xi$   $\pi$   $\rho$   $\sigma$   $\tau$   $\upsilon$   $\phi$   $\chi$   $\psi$   $\omega$   $\alpha$   $\beta$   $\gamma$   $\delta$   $\epsilon$   $\zeta$   $\eta$   $\theta$   $\iota$   $\kappa$   $\lambda$   $\mu$   $\nu$   $\xi$   $\pi$   $\rho$   $\sigma$   $\tau$   $\upsilon$   $\phi$   $\chi$   $\psi$   $\omega$   $\alpha$   $\beta$   $\gamma$

CHANDRA, A. AND J. S. SINGH: 1992, p. 10.

**COMPILATION INDEX**

	A. Compiled from 1,000,000 entries 1980-81. Updated by yearly records (over 100,000)
--	---

Presentation - LITM      Delivery - MP3 &amp; PDF

Magnetic Variation from True North about 1° West in 2020.  
(Annual change negligible.)

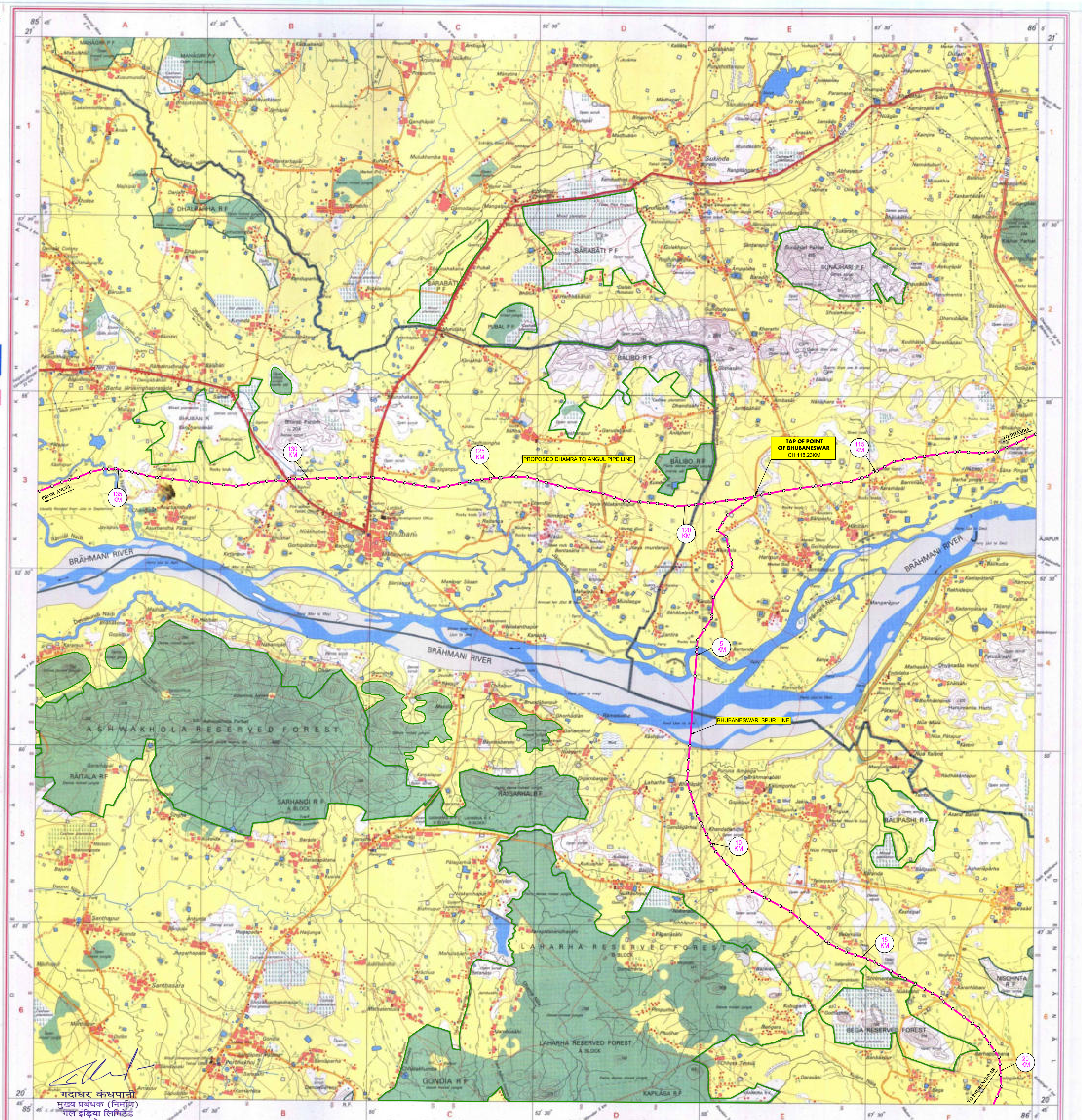
1:50,000

CONTROL INTERNAL, 30 MARCH 1965

For further details about this map, please contact:  
Director  
Orissa Geo-Spatial Data Centre  
Survey of India  
Survey Bhawan, PO - R B Laboratory  
Bhubaneswar.  
Fax : 0674 - 2300418

WEBSITE — [www.government.ca](http://www.government.ca)

Reproduction in whole or part by any means is prohibited without the written permission of Survey of India, the National Mapping Agency.



गदाधर कंधपानी  
मुख्य प्रबंधक (निर्माण)  
गेल इंडिया लिमिटेड  
भवनेश्वर

G. KANDHAPANI  
Chief Manager (Const.)  
GAIL (India) Ltd.  
Bhubaneswar

Printed and published at Mysore at Mysore Press.  
Published under the direction of Surveyor General of India,  
Survey of India, H.M. Sankar Das, Post Box No. 37, Sahasra Dham - 560001 (Mysore).  
Department of Science & Technology, Government of India.

Results of the multivariate analysis are shown in Table 2. The results of the multivariate analysis are shown in Table 2. The results of the multivariate analysis are shown in Table 2.