

RESTRICTED

ORISSA

FIRST EDITION

नियंत्रित के लिए नहीं
NOT FOR EXPORTINDIA
REFER TO THIS MAP AS
SHEET 73 H/14 FIRST EDITION

No. 73 H/14

CUTTACK & DHENKANĀL DISTRICTS.

Surveyed 1969-70.

Magnetic Variation from True North about 1° West in 1975.
(Decreasing by about 1° annually.)

Scale: 1:50,000
Sheet: 73 H/14
First Edition
India

Index to Sheets

73 H	73 H	73 H
73 H	73 H	73 H
73 H	73 H	73 H

Published under the direction of Major General Subodh Lal Khosla, Surveyor General of India, 1976.

1:50,000

500 m to 1 cm

HEIGHTS & CONTOURS IN METRES

CONTOUR INTERVAL 20 METRES

*Water features are shown in blue where they generally contain water.
*Cultivated areas are coloured yellow.
*The exterior boundaries of areas of National or Protected Forests are shown by green rhombs.

Contours are approximate.
A relative height, e.g., 50, represents the approximate height in metres, between the top and bottom of a steep slope.
Wooded areas are coloured green. Scattered trees and other vegetation are in green, but prominent surveyed trees are in black.

*Not applicable.

The kilometre scale numbers along roads, railways and canals are shown in short type, e.g., 10, whereas milestone numbers are shown in upright type, e.g., 51.

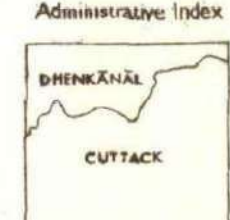
A relative height, e.g., 50, marked along a road, indicates the height of the top of the road embankment above the adjacent country.

The triangulated heights and contours in this sheet have not been adjusted to the heights of the appropriate benchmarks and may not be entirely in accordance with them.

The district boundary and sub-division boundaries between Cuttack and Dhenkanal in this sheet have been surveyed as joined out by the local officials on the ground but have not been verified by the authorities of Cuttack District.

REFERENCE
NH 5 National Highway No. 5.

Administrative Index



Scale: 1:50,000
Sheet: 73 H/14
First Edition
India

REFER TO THIS MAP AS
SHEET 73 H/14 FIRST EDITION

INDIA

गुदाधर कंधपानी
मुख्य प्रबंधक (निर्माण)
गैल इंडिया लिमिटेड
भुवनेश्वर
G. KANDHAPANI
Chief Manager (Const.)
GAIL (India) Ltd.
Bhubaneswar

GOVERNMENT OF INDIA COPYRIGHT, 1976.

Price: Sixteen Rupees.

RESTRICTED

This map is NOT to be published, copied or reproduced in part or whole without the permission of the Survey of India. It is to be kept in safe custody and handled by authorized persons only.

RESTRICTED

FIRST EDITION

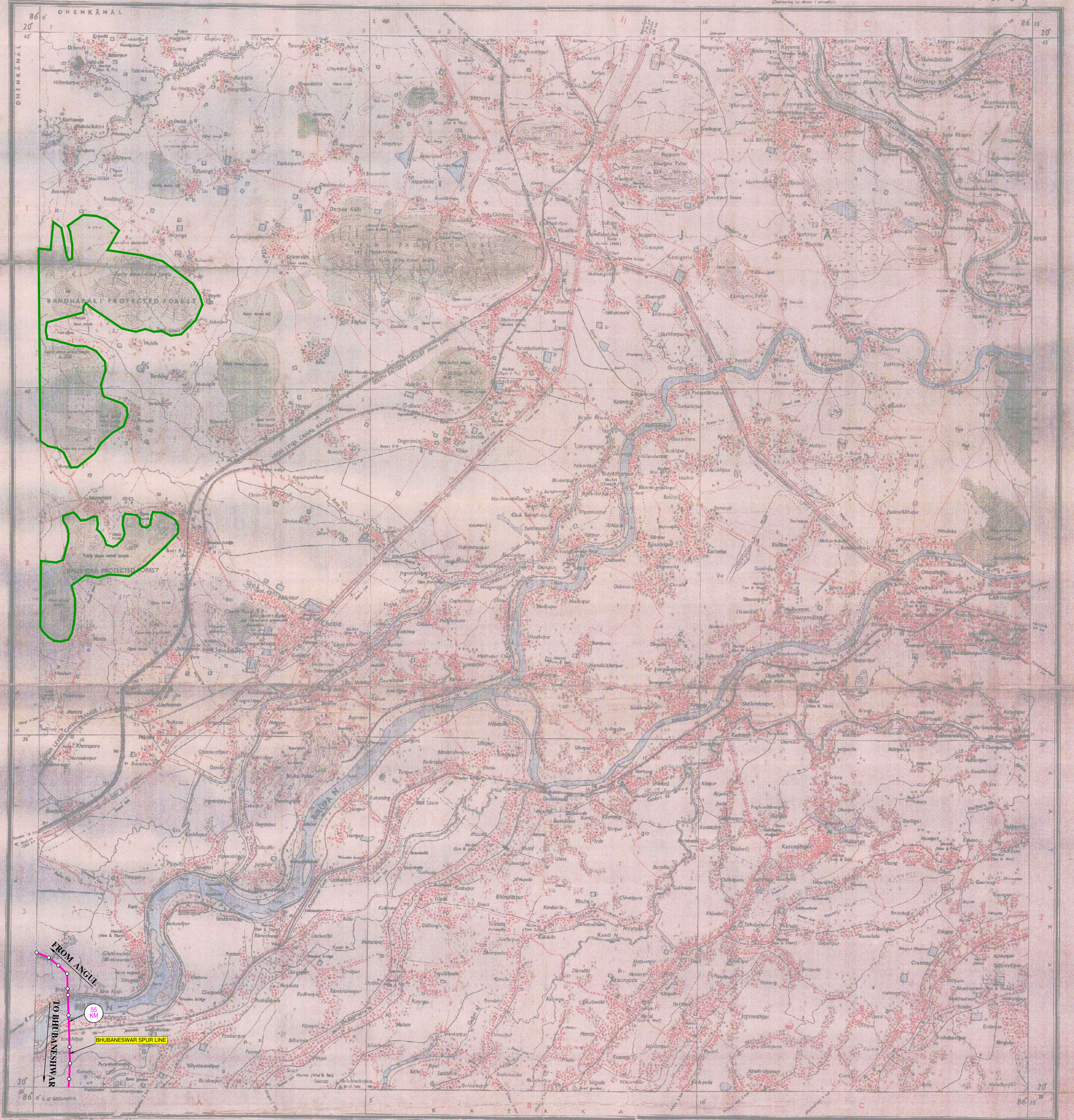
ORISSA

No. 73 L/2

DHENKANĀL & KATAKA DISTRICTS.

Surveyed 1972-73.

Magnetic Variation from True North about 1° West in 1970.
(Changing by about 1' annually).



Legend

Unimproved road	Improved road
Canal	Canal
Water tank	Water tank
Well	Well
...	...

Index to sheets

73/1	73/2	73/3
73/4	73/5	73/6
73/7	73/8	73/9

Published under the direction of Major General K.L. Khosla, D.S.O., M.A., R.S., F.R.G.S., M.A.S.C., D.S.A., Survey General of India, 1977

1:50,000
HEIGHTS & CONTOURS IN METRES
CONTOUR INTERVAL 20 METRES

Water features are shown in blue where they are permanent. Shaded areas represent the approximate heights of the land. The shaded areas are colored yellow. The shaded areas are colored yellow. The shaded areas are colored yellow.

The triangulated heights and contours in this map have been adjusted to the heights of the triangulation bench mark 1, and may not be strictly in accordance with them. The kilometre scale numbers along roads and the railway line shown in this map are in kilometres. The kilometre scale numbers along roads and the railway line shown in this map are in kilometres.

Administrative Index

DHENKANĀL	KATAKA
...	...

REFER TO THIS MAP AS: 1:50,000
SHEET 73 L/2 FIRST EDITION

INDIA

गदाधर कंधपानी
मुख्य प्रबंधक (निर्माण)
गैल इंडिया लिमिटेड
भुवनेश्वर
G. KANDHAPANI
Chief Manager (Const.)
GAIL (India) Ltd.
Bhubaneswar

RESTRICTED
This map is not to be published, copied or reproduced in any form or by any means, without the prior written permission of the Survey of India.

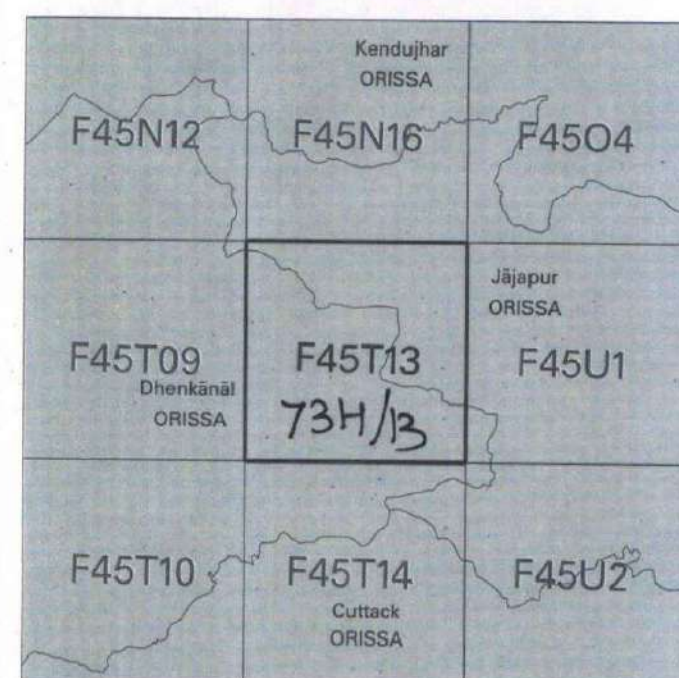


निर्यात के लिए नहीं NOT FOR EXPORT

OPEN SERIES
MAP

No. F45T13

Scale 1:50,000



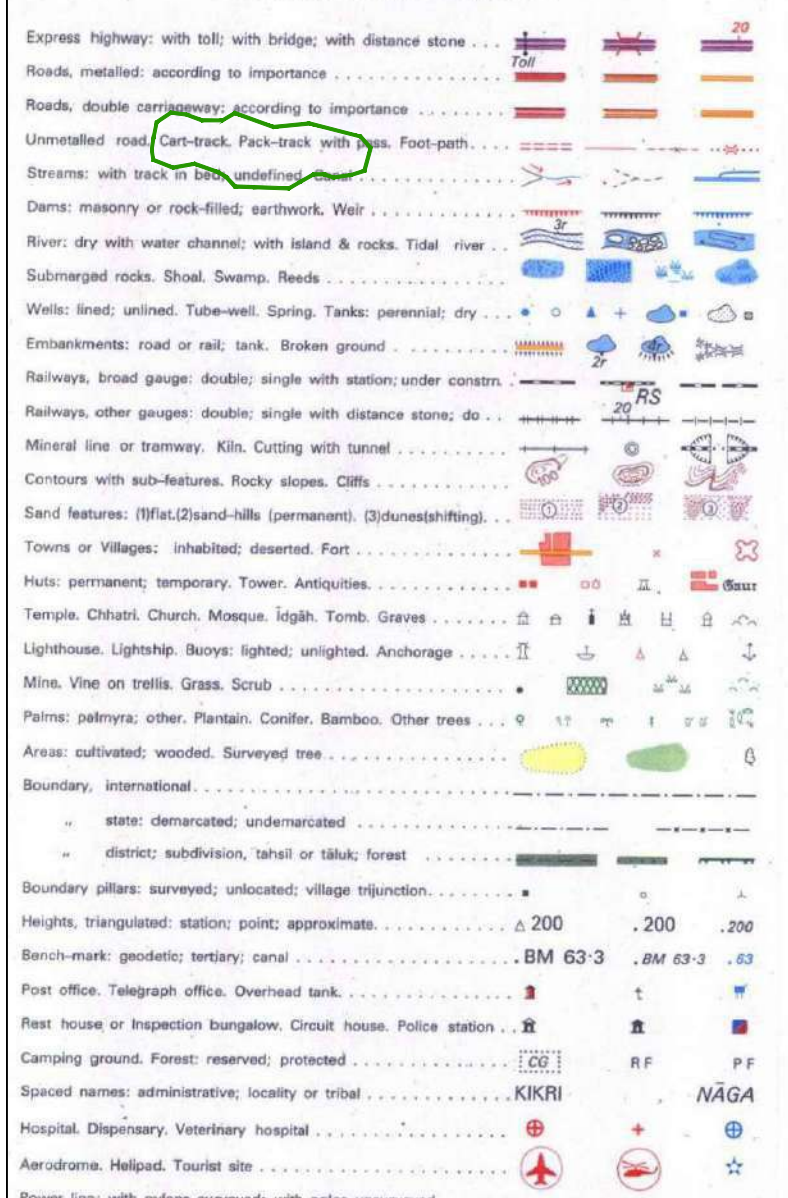
भारतीय सर्वेक्षण विभाग

SURVEY OF INDIA

1st Edition 2009.

Price: Rs. 70/-

CONVENTIONAL SYMBOLS



REFERENCES

NH 200 National Highway No. 200. PWD Public Works Department.

NOTES

Heights are in metres and above Indian mean sea level.
Intours are approximate.
Important buildings are shown in black with names.
Relative height, 'a', represents the approximate height, in metres, between the top and bottom of a steep slope.
In colour boundaries of areas of Reserved or Protected Forests shown by green ribbons.
and Pump is shown thus.

COMPILATION INDEX

A. Compiled from 1:25,000 surveys.
Updated for major details during 2009.

गदाधर कंधपानी
मुख्य प्रबंधक (निर्माण)
गैल इंडिया लिमिटेड
मुख्य प्रबंधक
G. KANDHAPANI
Chief Manager (Const.)
GAIL (India) Ltd.
Bhubaneswar
Datum - WGS 84

Projection - UTM

Magnetic Variation from True North about 2° West in 2005.
(Annual change negligible).

1:50,000

500 m to 1 cm
2 cm to 1 km
3 Kilometres

CONTOUR INTERVAL 20 METRES

For further details about this map, please contact

Director

Orissa Geo-Spatial Data Centre

Survey of India

Survey Bhawan, PO - R R Laboratory

Bhubaneswar.

Fax : 0674 - 2301418

WEBSITE - www.surveyofindia.gov.in

Reproduction in whole or part by any means is prohibited
without the written permission of Survey of India, the
National Mapping Agency.



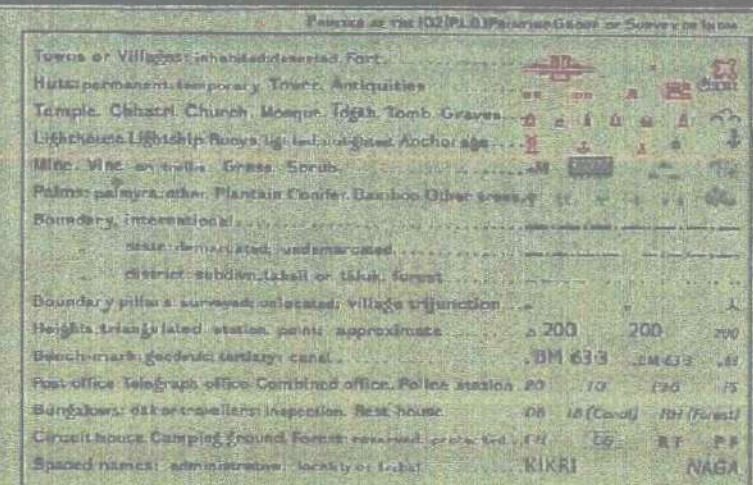
REG. No. G208-SFG D 19 (Orissa GDC-1:50,000)-1013.

भारत के सर्वेक्षण के विभाग ने प्रकाशित.
Published under the direction of Surveyor General of India,
Survey of India, Hathiabarka Estate, Post Box No. 37, Dehra Dun - 248001 (Uttarakhand),
Department of Science & Technology, Government of India.

PRINTED AT THE SOUTHERN PRINTING GROUP OF SURVEY OF INDIA.

Success 1973-74

Magnetic Variation from True North about 1° West in 1975.
(Determined by about 10 readings)



INDIA	भारत
1. The Government of India has decided to launch a new satellite television service for rural areas.	1. भारत सरकार ने ग्रामीण क्षेत्रों के लिए नई उपग्रह टेलिविजन सेवा शुरू करने का फैसला किया है।
2. The Ministry of Education has announced that all schools must follow the new curriculum by the next academic year.	2. शिक्षा विभाग ने घोषणा की है कि सभी स्कूलों को अगले शैक्षणिक वर्ष तक नए पाठ्यक्रम का पालन करना होगा।
3. The Prime Minister has visited the border area to inspect the progress of the border security project.	3. प्रधानमंत्री ने सीमा क्षेत्र का दौरा किया ताकि सीमा सुरक्षा परियोजना के प्रगति की जाँच की जा सके।
4. The government has decided to increase the minimum wage for unskilled workers in the construction sector.	4. सरकार ने निर्माण क्षेत्र में अशिक्षित कामगारों के न्यूनतम वेतन बढ़ाने का फैसला किया है।
5. The Ministry of Health has announced that the new health insurance scheme will be implemented in all districts.	5. स्वास्थ्य विभाग ने घोषणा की है कि नई स्वास्थ्य बीमा योजना सभी जिलों में लागू की जाएगी।
6. The government has decided to launch a new scheme to provide financial assistance to small businesses.	6. सरकार ने छोटे व्यवसायों को वित्तीय सहायता प्रदान करने के लिए नई योजना शुरू करने का फैसला किया है।
7. The Ministry of Agriculture has announced that the new agricultural policy will be implemented in the next year.	7. कृषि विभाग ने घोषणा की है कि नई कृषि नीति अगले वर्ष लागू की जाएगी।
8. The government has decided to launch a new scheme to provide financial assistance to farmers.	8. सरकार ने किसानों को वित्तीय सहायता प्रदान करने के लिए नई योजना शुरू करने का फैसला किया है।
9. The Ministry of Education has announced that the new curriculum will be implemented in all schools.	9. शिक्षा विभाग ने घोषणा की है कि नया पाठ्यक्रम सभी स्कूलों में लागू किया जाएगा।
10. The Prime Minister has visited the border area to inspect the progress of the border security project.	10. प्रधानमंत्री ने सीमा क्षेत्र का दौरा किया ताकि सीमा सुरक्षा परियोजना के प्रगति की जाँच की जा सके।

City Engineer PWD Public Works Department

गदाधर कंधपानी
मुख्य प्रबंधक (निर्माण)
गेल इंडिया लिमिटेड
भुवनेश्वर
G KANDHAPANI
Chief Manager (Const.)
GAIL (India) Ltd.
Bhubaneswar

© GOVERNMENT OF INDIA COPYRIGHT, 1979

RESTRICTED

This copy is NOT to be published, copied or reproduced in part or in whole either by photography or by any other means, should be kept in safe custody and handled by authorized persons only.

ORISSA

No. 73 $\frac{L}{K}$

Surveyed 1972:73

Magnetic Variation from True North about $1\frac{1}{2}^{\circ}$ West in 1970.
(Decreases by about 1° Annually)



Published under the direction of Major-General K.L. Khosla, BSc. BE (CMI), F.I.S., F.I.E., F.I.G.U., M.A.S.C.F. (U.S.A.) Surveyor General of India, 1977.

1:50,000

HEIGHTS & CONTOURS IN METRES
CONTOUR INTERVAL 20 METRES

*Water features are shown in blue where they generally contain water.

*Cultivated areas are coloured yellow.

The color boundaries of areas of Reserved or Protected Forests are shown by green ribbons.

* Not applicable.

[illegible]

GOVERNMENT OF INDIA COPYRIGHT, 1927.

REFER TO THIS MAP AS - 1:50,000
SHEET 73 L/6 FIRST EDITION

INDIA

REF 5A National Highway No. 5A

* गदाधर कंधपानी
मुख्य प्रबंधक (निर्माण)
गेल इंडिया लिमिटेड
भुवनेश्वर
G. KANDHAPANI
Chief Manager (Const.)
GAIL (India) Ltd.
Bhubaneswar

RESTRICTED

This map is NOT to be published, copied or reproduced in part or in whole either by photography or by any other means, should be kept in safe custody and handled by authorized persons only.