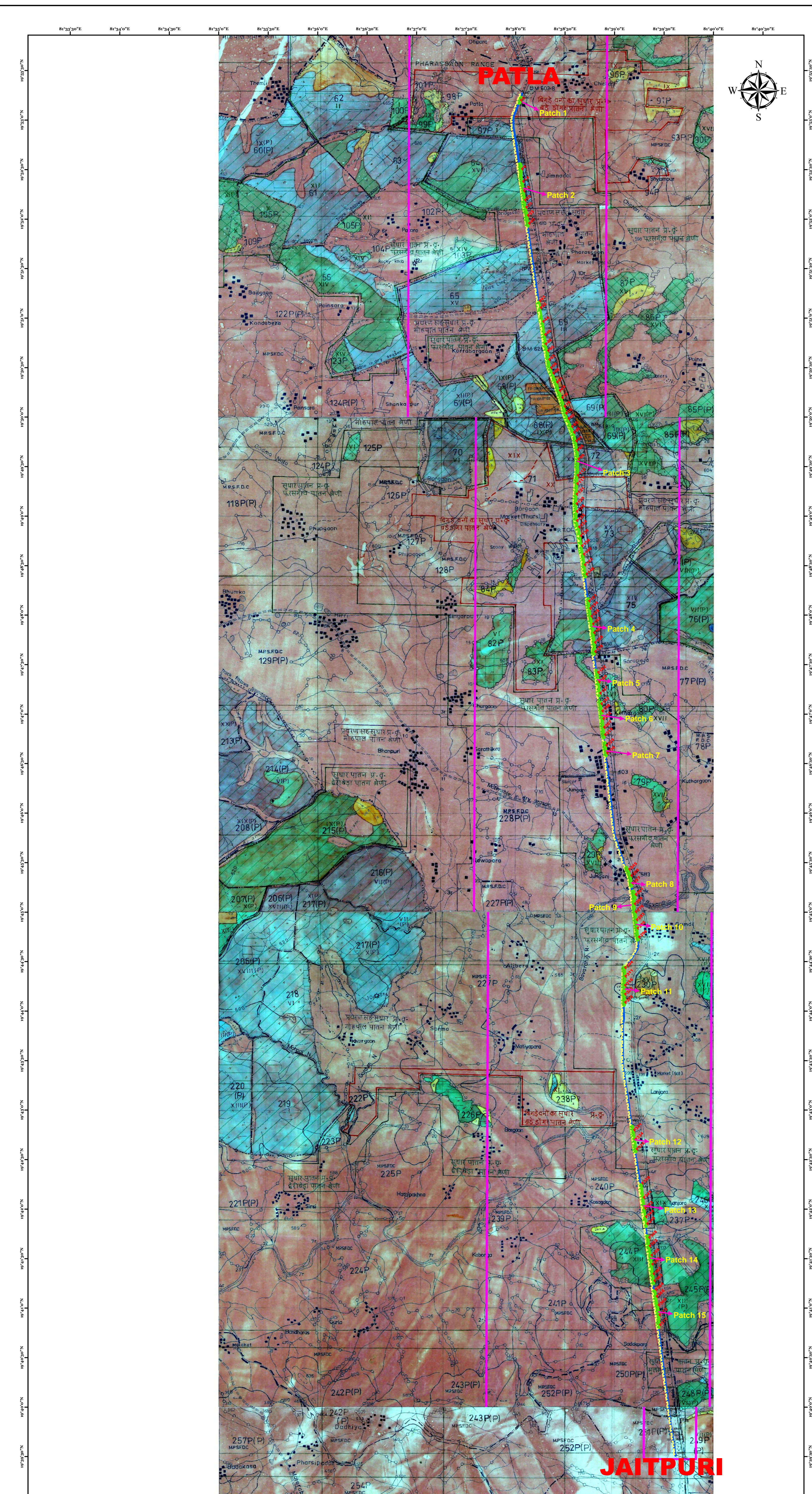


MAP SHOWING DGPS SURVEYED FOREST AREA PROPOSED FOR DIVERSION OF OFC CABLE FROM JAITPURI TO PATLA



DGPS SURVEYED FOREST PATCH PILLAR COORDINATES

SL. No.	Pillar ID	Patch No.	Starting (m)	Northing (m)	Latitude "N"	Longitude "E"	SL. No.	Pillar ID	Patch No.	Starting (m)	Northing (m)	Latitude "N"	Longitude "E"	SL. No.	Pillar ID	Patch No.	Starting (m)	Northing (m)	Latitude "N"	Longitude "E"
1	P1	PATCH 1	5668.42	219619.907	18°31'13.45212	81°38'15.0559	127	P127	PATCH 14	5673.026	219619.907	18°31'13.45212	81°38'15.0559	352	P352	PATCH 18	5689.07	219619.907	18°31'13.45212	81°38'15.0559

AREA STATEMENT OF FOREST LAND PROPOSED FOR DIVERSION

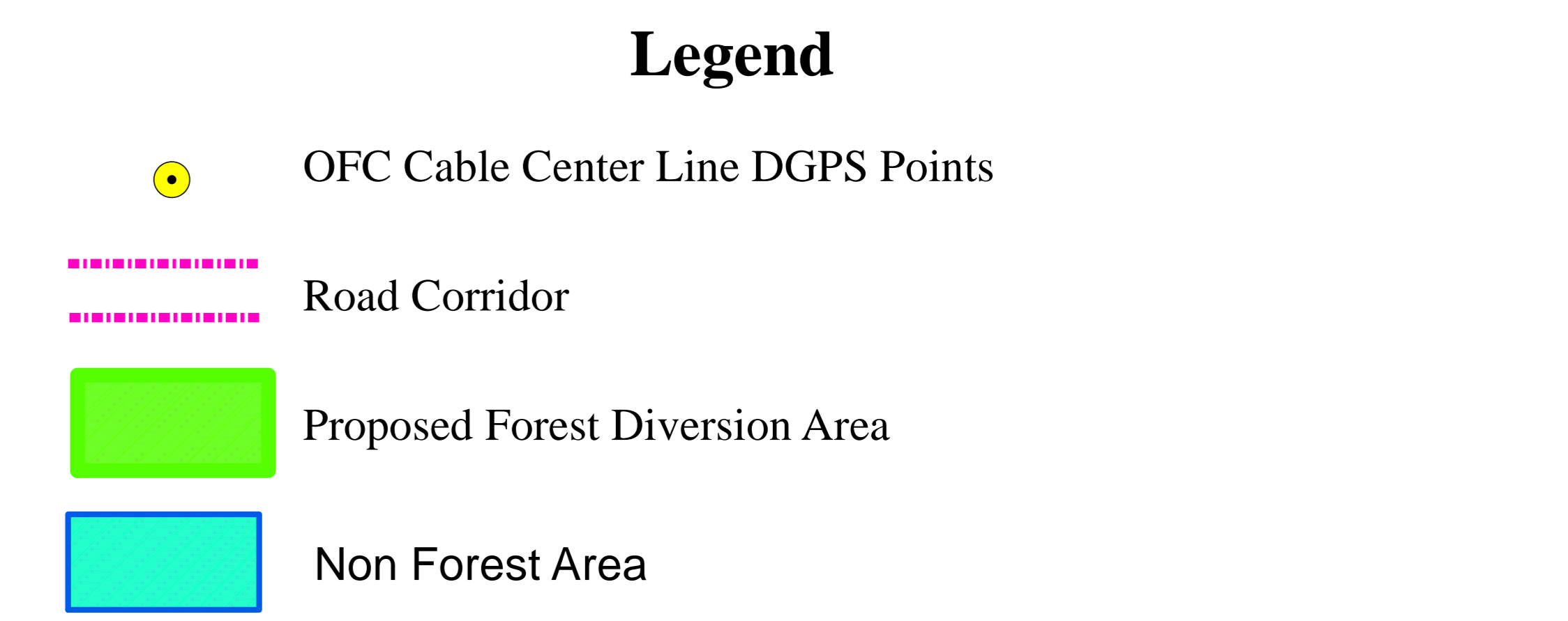
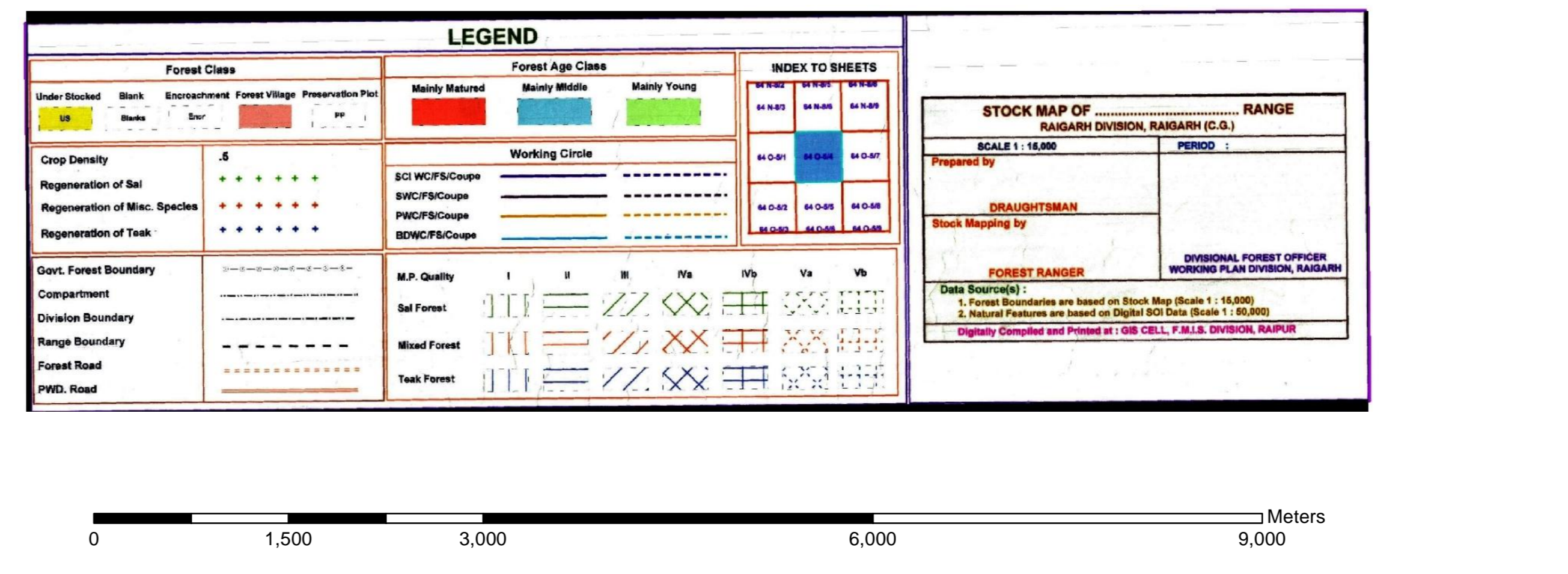
SL. NO.	PATCH NUMBER	DIVISION	RANGE	COMPARTMENT TYPE	COMPARTMENT NUMBER	DIVERSION AREA (in HA)		
1	PATCH NO 5	KESHUL PHARASGAON	PHARASGAON	PROTECTED FOREST	PF 81	0.014		
2	PATCH NO 13			PROTECTED FOREST	PF 23	0.088		
3	PATCH NO 14			PROTECTED FOREST	PF 245	0.044		
4	PATCH NO 15			PROTECTED FOREST	PF 245	0.030		
5	PATCH NO 11			PROTECTED FOREST	PF 23	0.022		
6	PATCH NO 3			RESERVED FOREST	RF 64	0.134		
7	PATCH NO 1			RESERVED FOREST	RF 64	0.052		
8	PATCH NO 4			RESERVED FOREST	RF 29	0.022		
9	PATCH NO 3			RESERVED FOREST	RF 69	0.047		
10	PATCH NO 3			RESERVED FOREST	RF 71	0.006		
11	PATCH NO 3			RESERVED FOREST	RF 75	0.001		
12	PATCH NO 3			RESERVED FOREST	RF 73	0.010		
13	PATCH NO 15			ORANGE AREA	OA 293	0.004		
TOTAL FOREST AREA						0.500		

SL. NO.	PATCH NUMBER	DISTRICT	TALUK	VILLAGE NAME	KHANS NUMBER	DIVERSION AREA (in HA)
1	PATCH NO 1	KONDAGAON	PHARASGAON	CHEBARI	L-26 KA	0.002
2	PATCH NO 2			PHARASGAON	4.8	0.006
3	PATCH NO 2			PHARASGAON	4.8	0.006
4	PATCH NO 2			PHARASGAON	4.8	0.006
5	PATCH NO 4			SARBERA	1.15 BIA	0.005
6	PATCH NO 6			KULHARGAON	7.52	0.033
7	PATCH NO 6			KULHARGAON	7.52 KA	0.003
8	PATCH NO 7			KULHARGAON	7.45 KH	0.012
9	PATCH NO 8			JUNIKALAR	50.42	0.017
10	PATCH NO 8			JUNIKALAR	19.18	0.027
11	PATCH NO 9			SIRPUR	7.11	0.006
12	PATCH NO 10			LANSORA	181.088	0.027
13	PATCH NO 11	KOSAGAON	20.66	0.014		
14	PATCH NO 12	KOSAGAON	43.41 KA	0.023		
TOTAL FOREST AREA						0.174
TOTAL FOREST LAND (TABLE A+B)						0.674

Total Route Length (in KM)	Total Forest Patch Length (in KM)	OFC Cable Trench Width (in KM)	Total Forest Diversion Area (in HA)
25.75	13.48	0.005	0.674

Total Protected Forest, Reserved Forest & Orange Forest Area (in HA)	Total Revenue Forest Area (in HA)	Non Forest Area (in HA)
0.500	0.174	0.613

FOREST MAP INDEX



Submitted by :-

Reliance Jio
Office No. 401 to 405, 4th Floor, Ambuja Mall,
Vidhan Sabha Road, Raipur-Chattisgarh

Surveyed by :-

Geotrax International Services
H.O. Plot No. 158 & 157, Lokayata Colony, Badarganj, Hyderabad-500058
B.O. #53, Neelra Extension, Parthi Nagar, Huzur, Raipur-492009

Printed On: 13.08.2016