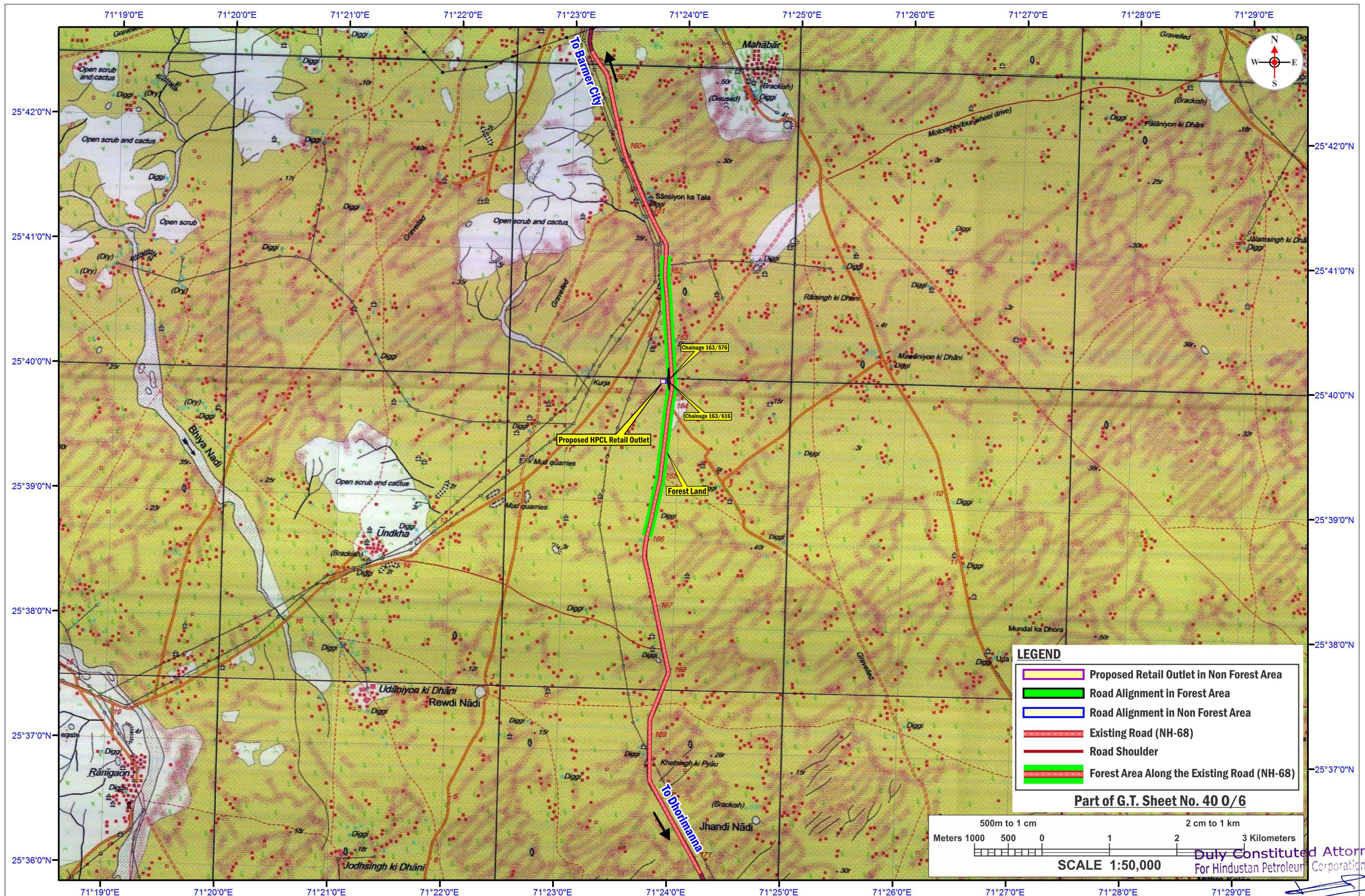


MAP SHOWING GEO-REFERENCED SURVEY OF INDIA TOPOSHEET WITH FOREST LAND BOUNDARY & PROPOSED ROAD ALIGNMENT

Construction of Approach Road for Proposed Hindustan Petroleum Corp. Ltd. Retail Outlet on Barmer City-Dhorimanna Road (NH-68) between KM Stone No. 163-164 (Chainage: 163/616 - 163/576) RHS in Khasra No. 2466/699, At Village-Mahabar Peethal, Tehsil-Barmer, District-Barmer, Raj.

Proposal No. : FP/RJ/ROAD/48584/2020 (Applied Area : 0.1962 ha)





No. G42R6
Scale 1:50,000

G42R1 (400/1)	G42R5 (400/5)	G42R9 (400/9)
G42R2 (400/2)	G42R6 (400/6) BÄRMER RAJASTHAN	G42R10 (400/10)
G42R3 (400/3)	G42R7 (400/7)	G42R11 (400/11)

भारतीय सर्वेक्षण विभाग SURVEY OF INDIA

1st Edition 2011.

Price : Rs. 77/-

CONVENTIONAL SYMBOLS

Express highway, with toll, with bridge, with distance stone		20
Roads, metalled according to importance		
Roads, double carriageway, according to importance		
Unmetalled road, Cart-track, Pack-track with pass, Foot-path		
Streams, with track in bed, undefined, Canal		
Dams: masonry or rock-filled, earthenwork, Weir		
River, dry with water channel, with island & rocks, Tidal river		
Submerged rocks, Shoal, Swamp, Reeds		
Wells: lined, unlined, Tube-well, Spring, Tanks: perennial, dry		
Embankments: road or rail, tank, Broken ground		
Railways, broad gauge: double, single with station, under constr.		
Railways, other gauges: double, single with distance stone, do.		
Mineral line or tramway, Kin, Cutting with tunnel		
Contours with sub-features, Rocky slopes, Cliffs		
Sand features: (1) flat, (2) sand-hill(permanent), (3) dunes(shifting)		
Towns or Villages: inhabited, deserted, Fort		
Huts: permanent, temporary, Tower, Antiquities		
Temple, Chhatra, Church, Mosque, Idgah, Tomb, Graves		
Lighthouse, Lightship, Buoys: lighted, unlighted, Anchorage		
Mine, Vine on trellis, Grass, Scrub		
Palm: palmyra; other, Plantain, Conifer, Bamboo, Other trees		
Areas: cultivated, wooded, Surveyed tree		
Boundary, international		
state, demarcated, undemarcated		
district, subdivision, tahsil or taluk, forest		
Boundary pillars: surveyed, uncoloured		
Heights, triangulated: station, point, approximate		200
Bench-mark: geodetic, tertiary, canal		BM 63-3
Post office, Telegraph office, Overhead tank		
Rest house or inspection bungalow, Circuit house, Police station		
Camping ground, Forest: reserved, protected		RF
Spaced names: administrative, locality or tribal		KIKRI
Hospital, Dispensary, Veterinary, Hospital / Dispensary		NAGA
Aerodrome, Helipad, Tourist site		
Power line: with pylons surveyed, with poles unsurveyed		

REFERENCE

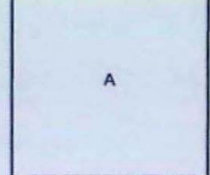
NH 15 National Highway No. 15

NOTES :-

Heights and Contours have not been shown.
A relative height, e.g., 5r, represents the approximate height, in metres, between the top and bottom of a steep slope.
A relative height, against a well, indicates its total depth in metres.
Tanks, in this area usually contain water from July to September.
Most of the unlined well symbols indicate covered tanks, called Kund which usually contain surface collection of rainwater.
Limits of cultivation are variable and dependent on rainfall.
Diggi is a tank which is used for collection of water.
Pydk is a place where there is arrangement for serving drinking water.
Hand Pump is shown thus.....

COMPILATION INDEX

A Surveyed during 1996-99. Updated for major details during 2005-06.



Projection - UTM Datum - WGS 84

Magnetic Variation from True North about 1° East in 2005.
(Increasing by about 1° annually)

Scale 1:50,000
500 m to 1 cm
2 cm to 1 km
Metres 1000 500 0 1 2 3 Kilometres

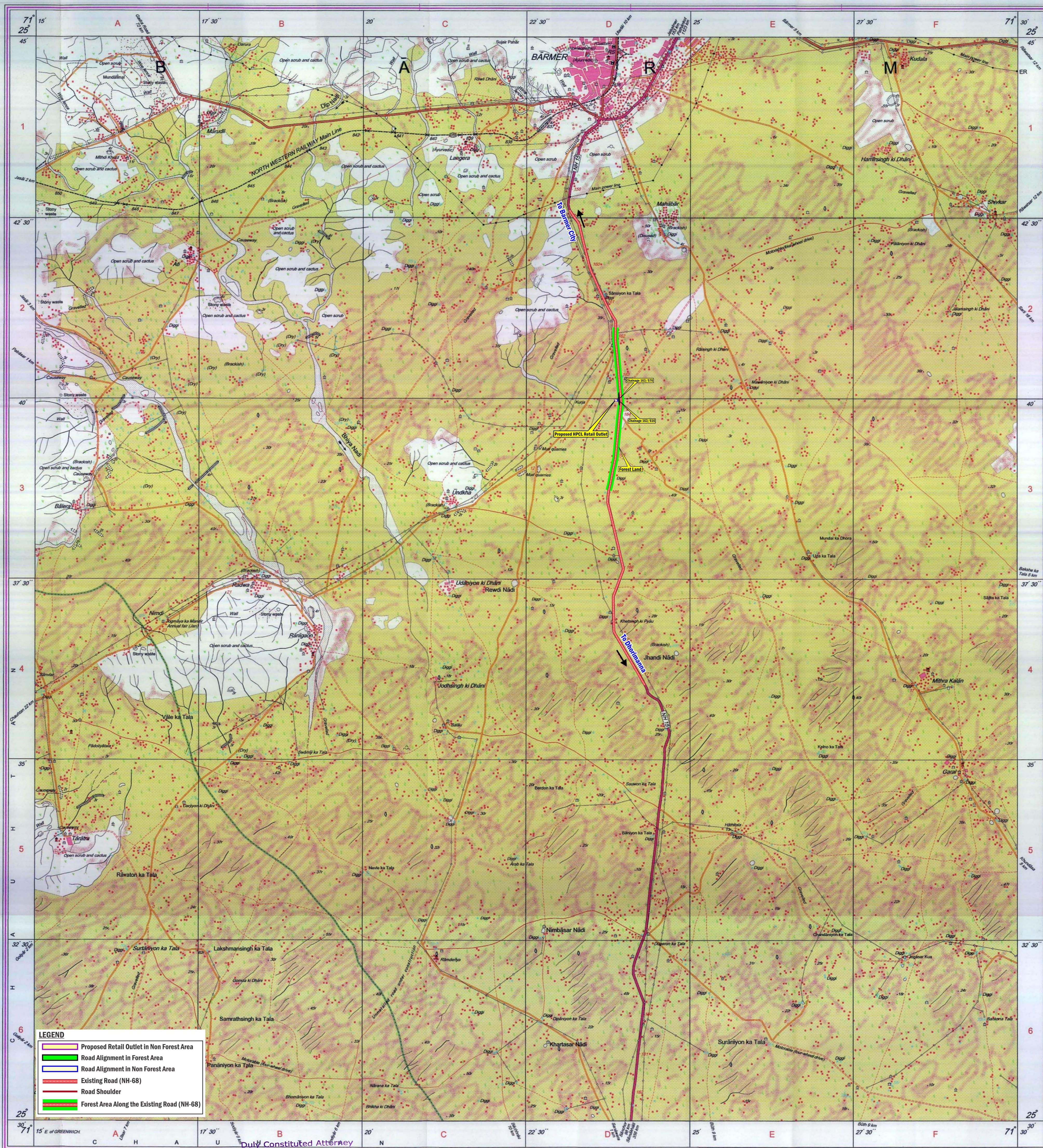
For further details about this map, please contact

Director
Rajasthan Geo-Spatial Data Centre
Survey of India
Sector 10, Vidyadharanagar
Jaipur.

WEBSITE - www.surveyofindia.gov.in

Reproduction in whole or part by any means is prohibited without the written permission of Survey of India, the National Mapping Agency.

GOVERNMENT OF INDIA COPYRIGHT, 2011.



REG. No. -WPG D11 (Rajasthan GDC-1:50,000)-

Duly Constituted Attorney
For Hindustan Petroleum Corporation Ltd.

Krishan Lal
Dy. General Manager-Retail

भारत के नगरपालिका, चर्च सुभा राय, चौधरी, के निदेशन से प्रकाशित,
Published under the direction of Swarna Subba Rao, B.E., Surveyor General of India,
Survey of India, Hathi Barkala Estate, Post Box No. 37, Dehra Dun-248001 (Uttarakhand)
Department of Science & Technology, Government of India.

PRINTED AT THE WESTERN PRINTING GROUP OF SURVEY OF INDIA.