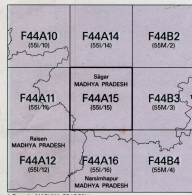


निर्जित के लिए नहीं NOT FOR EXPORT

OPEN SERIES  
MAP

No. F44A15

Scale 1:50,000



भारतीय सर्वेक्षण विभाग

SURVEY OF INDIA

1st Edition 2011. Price : Rs. 70/-

### CONVENTIONAL SYMBOLS

- [illegible]

REFERENCE  
 NY 26 National Highway No. 26

NOTES :-

NOTES :  
a Indian mean sea level.

A relative height, e.g., .20, represents the approximate height on a steep slope.

COMPILATION INDEX

	A. Surveyed during 1968-79	Updated
1. <i>Chrysomelidae</i>	10	10
2. <i>Curculionidae</i>	10	10
3. <i>Chrysomelidae</i>	10	10
4. <i>Chrysomelidae</i>	10	10
5. <i>Chrysomelidae</i>	10	10
6. <i>Chrysomelidae</i>	10	10
7. <i>Chrysomelidae</i>	10	10
8. <i>Chrysomelidae</i>	10	10
9. <i>Chrysomelidae</i>	10	10
10. <i>Chrysomelidae</i>	10	10
11. <i>Chrysomelidae</i>	10	10
12. <i>Chrysomelidae</i>	10	10
13. <i>Chrysomelidae</i>	10	10
14. <i>Chrysomelidae</i>	10	10
15. <i>Chrysomelidae</i>	10	10
16. <i>Chrysomelidae</i>	10	10
17. <i>Chrysomelidae</i>	10	10
18. <i>Chrysomelidae</i>	10	10
19. <i>Chrysomelidae</i>	10	10
20. <i>Chrysomelidae</i>	10	10
21. <i>Chrysomelidae</i>	10	10
22. <i>Chrysomelidae</i>	10	10
23. <i>Chrysomelidae</i>	10	10
24. <i>Chrysomelidae</i>	10	10
25. <i>Chrysomelidae</i>	10	10
26. <i>Chrysomelidae</i>	10	10
27. <i>Chrysomelidae</i>	10	10
28. <i>Chrysomelidae</i>	10	10
29. <i>Chrysomelidae</i>	10	10
30. <i>Chrysomelidae</i>	10	10
31. <i>Chrysomelidae</i>	10	10
32. <i>Chrysomelidae</i>	10	10
33. <i>Chrysomelidae</i>	10	10
34. <i>Chrysomelidae</i>	10	10
35. <i>Chrysomelidae</i>	10	10
36. <i>Chrysomelidae</i>	10	10
37. <i>Chrysomelidae</i>	10	10
38. <i>Chrysomelidae</i>	10	10
39. <i>Chrysomelidae</i>	10	10
40. <i>Chrysomelidae</i>	10	10
41. <i>Chrysomelidae</i>	10	10
42. <i>Chrysomelidae</i>	10	10
43. <i>Chrysomelidae</i>	10	10
44. <i>Chrysomelidae</i>	10	10
45. <i>Chrysomelidae</i>	10	10
46. <i>Chrysomelidae</i>	10	10
47. <i>Chrysomelidae</i>	10	10
48. <i>Chrysomelidae</i>	10	10
49. <i>Chrysomelidae</i>	10	10
50. <i>Chrysomelidae</i>	10	10
51. <i>Chrysomelidae</i>	10	10
52. <i>Chrysomelidae</i>	10	10
53. <i>Chrysomelidae</i>	10	10
54. <i>Chrysomelidae</i>	10	10
55. <i>Chrysomelidae</i>	10	10
56. <i>Chrysomelidae</i>	10	10
57. <i>Chrysomelidae</i>	10	10
58. <i>Chrysomelidae</i>	10	10
59. <i>Chrysomelidae</i>	10	10
60. <i>Chrysomelidae</i>	10	10
61. <i>Chrysomelidae</i>	10	10
62. <i>Chrysomelidae</i>	10	10
63. <i>Chrysomelidae</i>	10	10
64. <i>Chrysomelidae</i>	10	10
65. <i>Chrysomelidae</i>	10	10
66. <i>Chrysomelidae</i>	10	10
67. <i>Chrysomelidae</i>	10	10
68. <i>Chrysomelidae</i>	10	10
69. <i>Chrysomelidae</i>	10	10
70. <i>Chrysomelidae</i>	10	10
71. <i>Chrysomelidae</i>	10	10
72. <i>Chrysomelidae</i>	10	10
73. <i>Chrysomelidae</i>	10	10
74. <i>Chrysomelidae</i>	10	10
75. <i>Chrysomelidae</i>	10	10
76. <i>Chrysomelidae</i>	10	10
77. <i>Chrysomelidae</i>	10	10
78. <i>Chrysomelidae</i>	10	10
79. <i>Chrysomelidae</i>	10	10
80. <i>Chrysomelidae</i>	10	10
81. <i>Chrysomelidae</i>	10	10
82. <i>Chrysomelidae</i>	10	10
83. <i>Chrysomelidae</i>	10	10
84. <i>Chrysomelidae</i>	10	10
85. <i>Chrysomelidae</i>	10	10
86. <i>Chrysomelidae</i>	10	10
87. <i>Chrysomelidae</i>	10	10
88. <i>Chrysomelidae</i>	10	10
89. <i>Chrysomelidae</i>	10	10
90. <i>Chrysomelidae</i>	10	10
91. <i>Chrysomelidae</i>	10	10
92. <i>Chrysomelidae</i>	10	10
93. <i>Chrysomelidae</i>	10	10
94. <i>Chrysomelidae</i>	10	10
95. <i>Chrysomelidae</i>	10	10
96. <i>Chrysomelidae</i>	10	10
97. <i>Chrysomelidae</i>		

Projection = UTM Datum = WGS 84

Magnetic Variation from True North about  $\frac{1}{2}^{\circ}$  West in 2005.  
(Decreasing by about  $1'$  annually).

1:50,000

For further details about this map, please contact

Director  
Madhya Pradesh Geo-Spatial Data Centre  
Survey of India

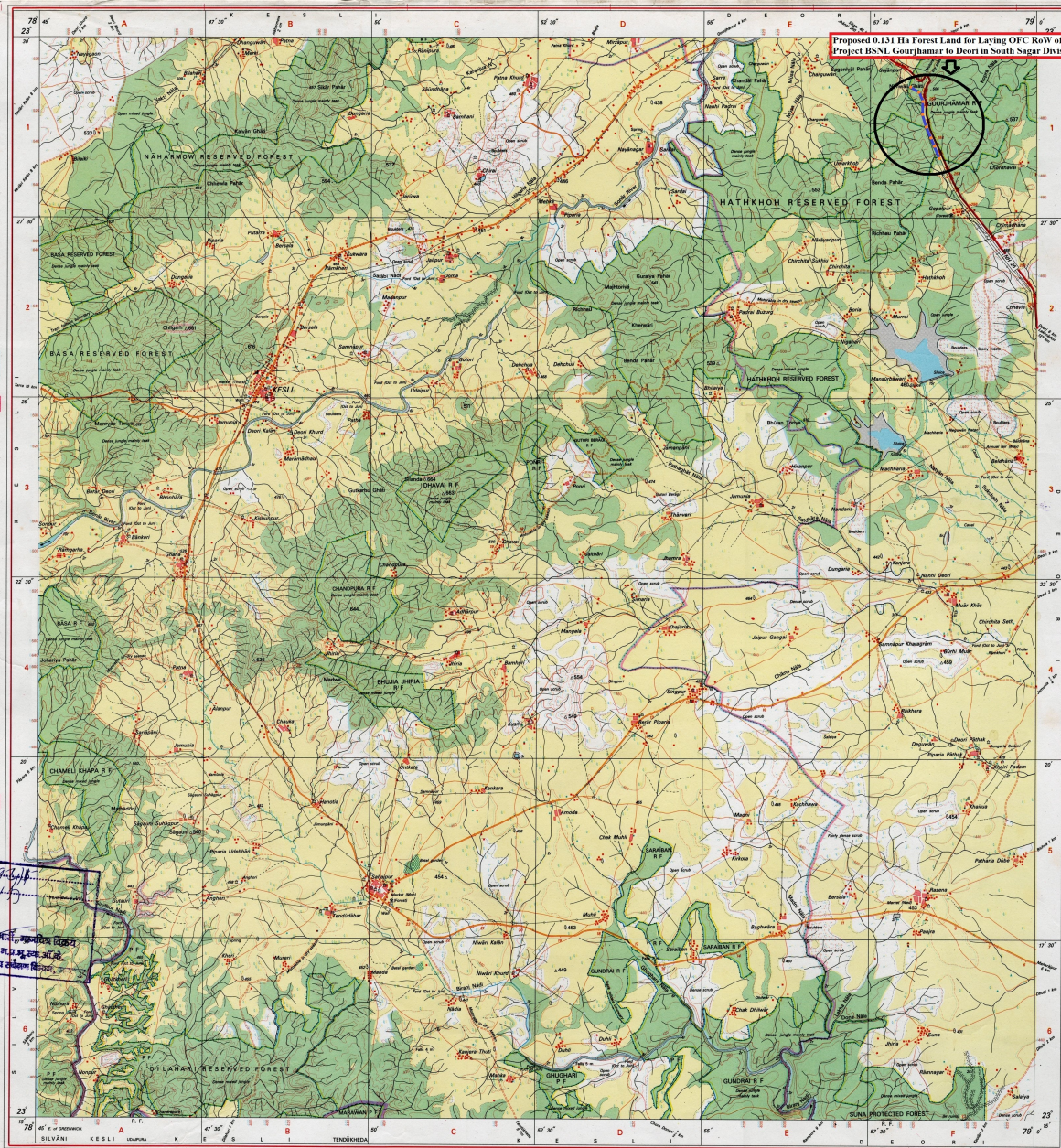
Survey Colony, Vijaynagar  
Jabalpur.

Fax : 0761 - 2646682

ion in whole or part by any means is prohibited.

With the written permission of Survey of India, the Mapping Agency.

ENT OF INDIA. COPYRIGHT, 2015.



**Proposed 0.131 Ha Forest Land for Laying OFC RoW of NOEN Project BSNL Gourjhamar to Deori in South Sagar Division**

भारत के राष्ट्रीयकृत लेखिका में प्रकाशित,  
Published under the direction of Surveyor General of India,  
Survey of India, Hrishikesh Estate, Post Box No. 37, Dehra Dun - 248001 (Uttarakhand)  
Department of Science & Technology, Government of India.

PRINTED AT THE EASTERN PRINTING GROUP OF SURVEY OF INDIA.

Sub Divisional Engineer  
OEC Mica (I) SAGAR