



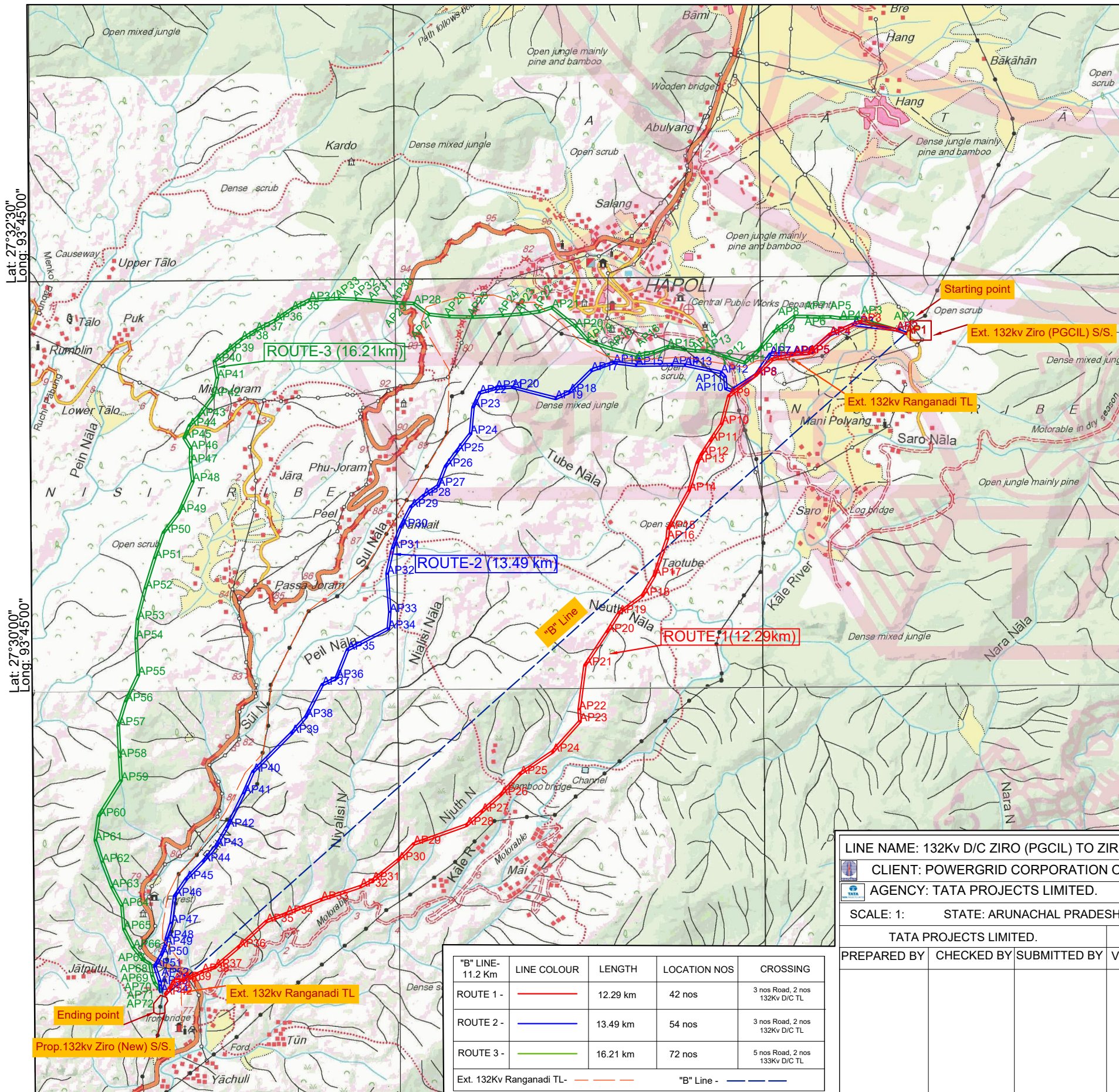
SURVEY OF INDIA TOPO-SHEET SHOWING THREE ALTERNATE ROUTES EXAMINED.

Lat: 27°35'00"
Long: 93°45'00"

Lat: 27°35'00"
Long: 94°47'30"

Lat: 27°35'00"
Long: 94°50'00"

Lat: 27°35'00"
Long: 93°52'30"



भारतीय सर्वेक्षण विभाग SURVEY OF INDIA
1st Edition 2011. Price : Rs. 77/-

CONVENTIONAL SYMBOLS

Express highway, with toll, with bridge, with distance stone	
Roads, metalled, according to importance	
Roads, double carriageway, according to importance	
Unmetalled road, Cart-track, Pack-track with pass, Foot-path	
Streams, with track in bed, undefined, Canal	
Dams, masonry or rock-filled, earthwork, Weir	
River, dry with water channel, with island & rocks, Tidal river	
Submerged rocks, Shoal, Swamp, Reeds	
Wells, lined, unlined, Tube-well, Spring, Tanks, perennial, dry	
Embankments, road or rail, tank, Broken ground	
Railways, broad gauge: double, single with station, under constn	
Railways, other gauges: double, single with distance stone, do	
Mineral line or tramway, Kin, Cutting with tunnel	
Contours with sub-features, Rocky slopes, Cliffs	
Sand features: (1) flat, (2) sand-hills (permanent), (3) dunes (shifting)	
Towns or Villages: inhabited, deserted, Fort	
Huts: permanent, temporary, Tower, Antiquities	
Temples, Chhatra, Church, Mosque, Tōghā, Tomb, Graves	
Lighthouse, Lightship, Buoys: lighted, unlighted, Anchorage	
Mine, Vine on trellis, Grass, Scrub	
Palms, paimyra, other, Plantain, Conifer, Bamboo, Other trees	
Areas: cultivated, wooded, Surveyed tree	
Boundary, international	
state, demarcated, undemarcated	
district, subdivision, tahsil or tālik, forest	
Boundary pillars: surveyed, unvoiced	
Heights, triangulated: station, point, approximate	
Bench-mark, geodetic, tertiary, canal	
Post office, Telegraph office, Overhead tank	
Rest house or inspection bungalow, Circuit house, Police station	
Camping ground, Forest: reserved, protected	
Spaced names: administrative, locality or tribal	
Hospital, Dispensary, Veterinary, Hospital / Dispensary	
Aerodrome, Heli-pad, Tourist site	
Power line: with pylons surveyed, with poles unsurveyed	

TOPO-SHEET NO- 83E/14 (Top),
83E/15 (Bottom)

NOTES -
Heights and contours have not been shown.
A relative height, e.g., 6, represents the approximate height, in metres, between the top and bottom of a steep slope.
Names and subdivision boundaries of the district of Arunāchal Pradesh have not been shown for want of reliable information.
/hum or temporarily cultivated areas occur throughout the jungle, they are normally abandoned after 2-3 years and are not shown.
Numerous turning points are existing on the Kamini-Ziro road which have not been shown.
Log bridges in this sheet are liable to be washed away during monsoon.

LINE NAME: 132kv D/C ZIRO (PGCIL) TO ZIRO (NEW) TRANSMISSION LINE.					
CLIENT: POWERGRID CORPORATION OF INDIA LIMITED.					
AGENCY: TATA PROJECTS LIMITED.					
SCALE: 1:	STATE: ARUNACHAL PRADESH	DRAWING NO: TPL/AR/2018/	DATE: / / 2019		
TATA PROJECTS LIMITED.			P.G.C.I.L.		
PREPARED BY	CHECKED BY	SUBMITTED BY	VERIFIED BY	RECOMMENDED BY	APPROVED BY

"B" LINE - 11.2 Km	LINE COLOUR	LENGTH	LOCATION NOS	CROSSING
ROUTE 1 -		12.29 km	42 nos	3 nos Road, 2 nos 132Kv D/C TL
ROUTE 2 -		13.49 km	54 nos	3 nos Road, 2 nos 132Kv D/C TL
ROUTE 3 -		16.21 km	72 nos	5 nos Road, 2 nos 133Kv D/C TL
Ext. 132Kv Ranganadi TL -				
"B" Line -				

Lat: 27°27'30"
Long: 93°45'00"

Lat: 27°27'30"
Long: 93°47'30"

Lat: 27°27'30"
Long: 93°50'00"

Lat: 27°27'30"
Long: 93°52'30"