

SURVEY OF INDIA TOPO-SHEET SHOWING 33.183Ha OF USF AREA PROPOSED FOR DIVERSION UNDER HAPOLI FOREST DIVISION, HAPOLI.

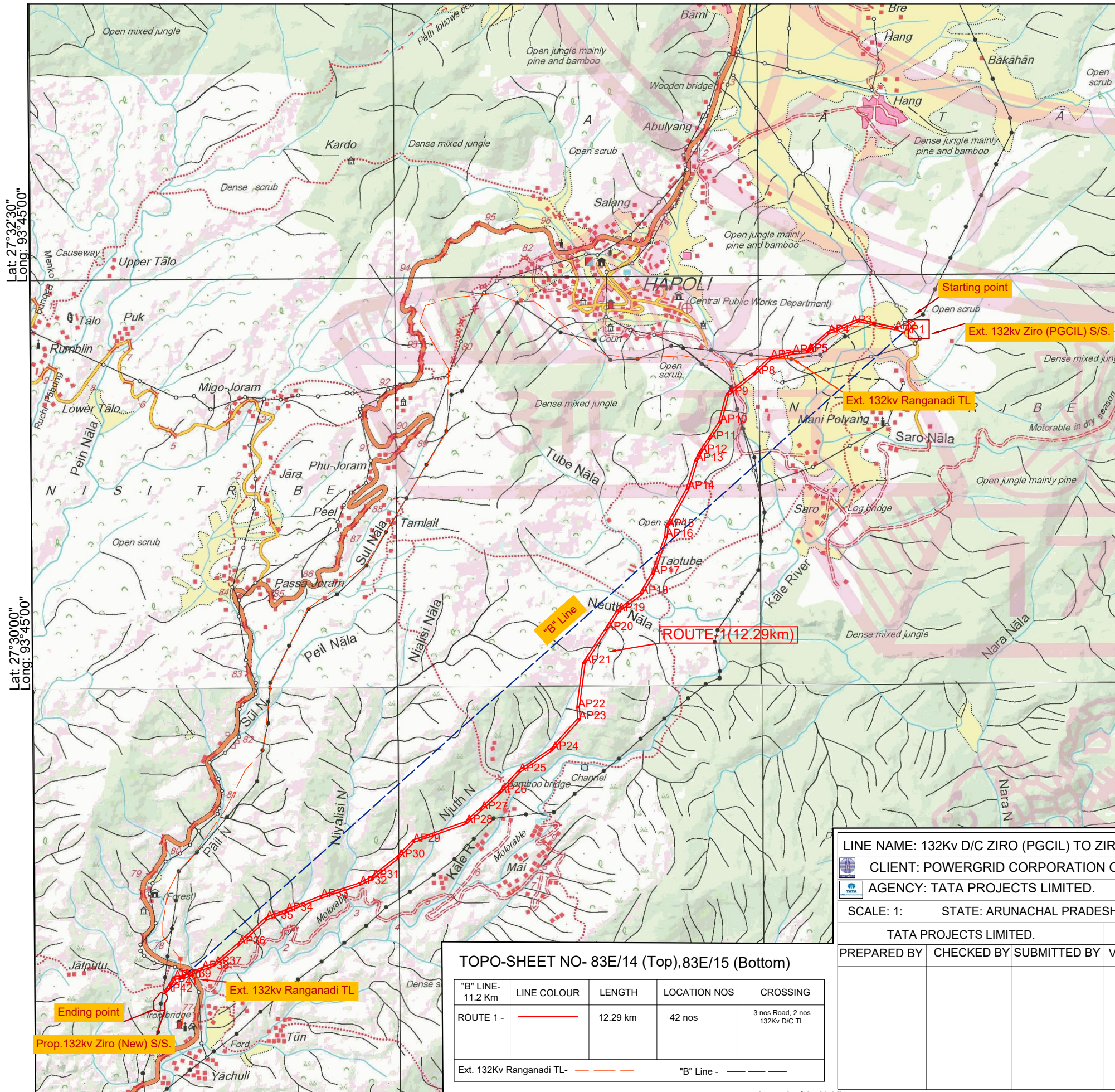


Lat: 27°35'00"
Long: 93°45'00"

Lat: 27°35'00"
Long: 94°47'30"

Lat: 27°35'00"
Long: 94°50'00"

Lat: 27°35'00"
Long: 93°52'30"



भारतीय सर्वेक्षण विभाग SURVEY OF INDIA
1st Edition 2011. Price : Rs. 77/-

CONVENTIONAL SYMBOLS

Express highway with toll, with bridge, with distance stone	
Roads, metalled, according to importance	
Roads, double carriageway, according to importance	
Unmetalled road, Car-track, Pack-track with pass, Foot-path	
Streams with track in bed, undefined, Canal	
Dams, masonry or rock-filled, earthwork, Weir	
River, dry with water channel, with island & rocks, Tidal river	
Submerged rocks, Shoal, Swamp, Reeds	
Wells, lined, unlined, Tube-well, Spring, Tanks, perennial, dry	
Embankments, road or rail, tank, Broken ground	
Railways, broad gauge: double, single with station, under constn	
Railways, other gauges: double, single with distance stone, do.	
Mineral line or tramway, Kin, Cutting with tunnel	
Contours with sub-features, Rocky slopes, Cliffs	
Sand features: (1)flat, (2)sand-hill(permanent), (3)dunes/shifting	
Towns or Villages: inhabited, deserted, Fort	
Huts: permanent, temporary, Tower, Antiquities	
Temple, Chhatra, Church, Mosque, Iggh, Tomb, Graves	
Lighthouse, Lightship, Buoy: lighted, unlighted, Anchorage	
Mine, Vine on trellis, Grass, Scrub	
Palms: palmyra, other, Plantain, Conifer, Bamboo, Other trees	
Areas: cultivated, wooded, Surveyed tree	
Boundary, international	
state: demarcated, undemarcated	
district, subdivision, tahsil or taluk, forest	
Boundary pillars: surveyed, unlocated	
Heights, triangulated: station, point, approximate	
Bench-mark: geodetic, tertiary, canal	
Post office, Telegraph office, Overhead tank	
Rest house or inspection bungalow, Court house, Police station	
Camping ground, Forest: reserved, protected	
Spaced names: administrative, locality or tribal	
Hospital, Dispensary, Veterinary, Hospital / Dispensary	
Aerodrome, Helipad, Tourist site	
Power line: with pylons surveyed; with poles unsurveyed	

NOTES :-
 Heights and contours have not been shown.
 A relative height, e.g., 20, represents the approximate height, in metres, between the top and bottom of a steep slope.
 Names and subdivision boundaries of the district of Arunachal Pradesh have not been shown for want of reliable information.
 Jām or temporarily cultivated areas occur throughout the jungle, they are normally abandoned after 2-3 years and are not shown.
 Numerous turning points are existing on the Karim Ziro road which have not been shown.
 Log bridges in this sheet are liable to be washed away during monsoon.

LINE NAME: 132kv D/C ZIRO (PGCIL) TO ZIRO (NEW) TRANSMISSION LINE.					
CLIENT: POWERGRID CORPORATION OF INDIA LIMITED.					
AGENCY: TATA PROJECTS LIMITED.					
SCALE: 1:		STATE: ARUNACHAL PRADESH		DRAWING NO: TPL/AR/2018/ / DATE: / /2019	
TATA PROJECTS LIMITED.			P.G.C.I.L.		
PREPARED BY	CHECKED BY	SUBMITTED BY	VERIFIED BY	RECOMMENDED BY	APPROVED BY

TOPO-SHEET NO- 83E/14 (Top), 83E/15 (Bottom)

"B" LINE- 11.2 Km	LINE COLOUR	LENGTH	LOCATION NOS	CROSSING
ROUTE 1 -		12.29 km	42 nos	3 nos Road, 2 nos 132kv DIC TL
Ext. 132Kv Ranganadi TL-				
"B" Line -				

Lat: 27°27'30"
Long: 93°45'00"

Lat: 27°27'30"
Long: 93°47'30"

Lat: 27°27'30"
Long: 93°50'00"

Lat: 27°27'30"
Long: 93°52'30"