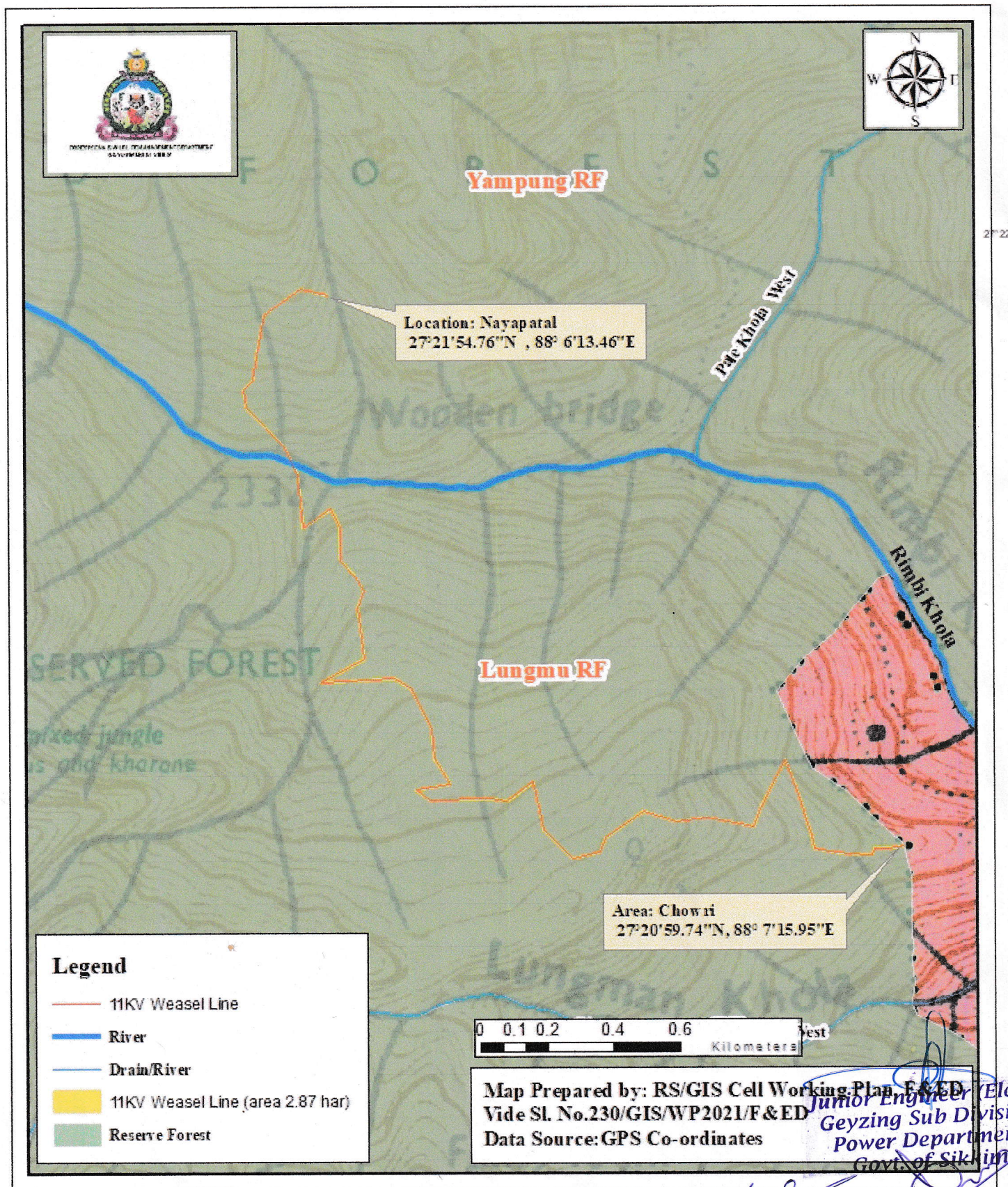


**MAP SHOWING THE PROPOSED LOCATION OF EXTENTION OF THREE PHASE 11 KV WEASEL LINE AREA 2.87 HA FALLING INSIDE LUNGUM & YAMPUNG RF FROM ZCHOWRI TO NAYAPATAL VIA SAKHIMDARA AND DOVAN**



Revenue Inspector  
West District  
Gyalshing

Block Officer  
Pelling, Block  
Geyzing Sub-Division  
Power Department  
Govt. of Sikkim

Assistant Engineer (Electrical)  
G.O.(T)  
Gyalshing

G.O.(T)  
WEST

Junior Engineer (Electrical)  
Geyzing - Sub-Division