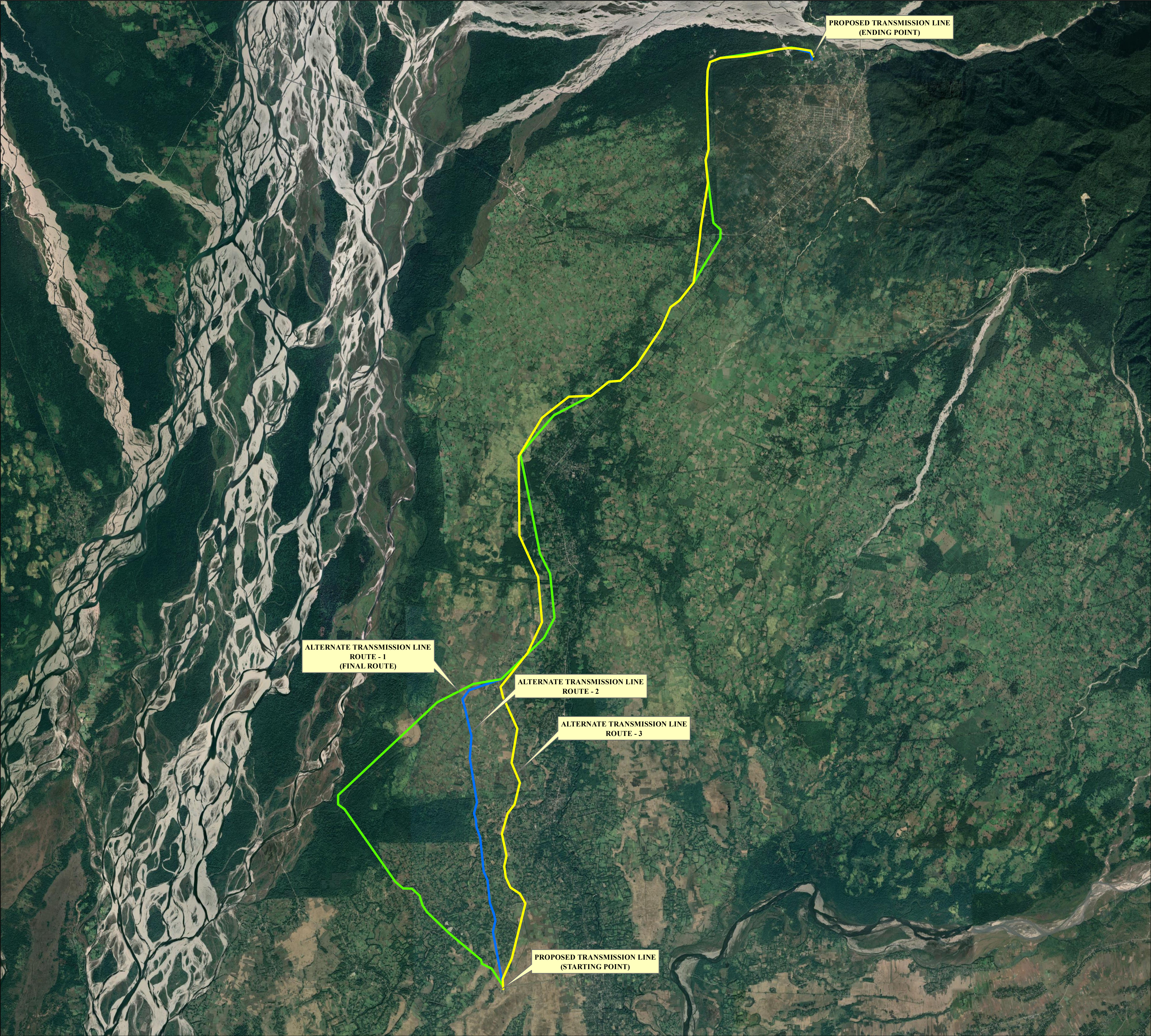


MAP SHOWING THE THREE (3) DIFFERENT ALTERNATE ROUTE ALIGNMENT OF 132 KV ROING - CHAPAKHOWA POWER TRANSMISSION LINE PROJECT UNDER NORTH EASTERN STRENGTHENING SCHEME AT SADIYA STATION (NORTH BLOCK) RESERVE FOREST UNDER DOOMDOOMA FOREST DIVISION, TINSUKIA



Legend

TRANSMISSION LINE (ALTERNATE ROUTE - 1 )

TRANSMISSION LINE (ALTERNATE ROUTE - 2 )

TRANSMISSION LINE (ALTERNATE ROUTE - 3 )