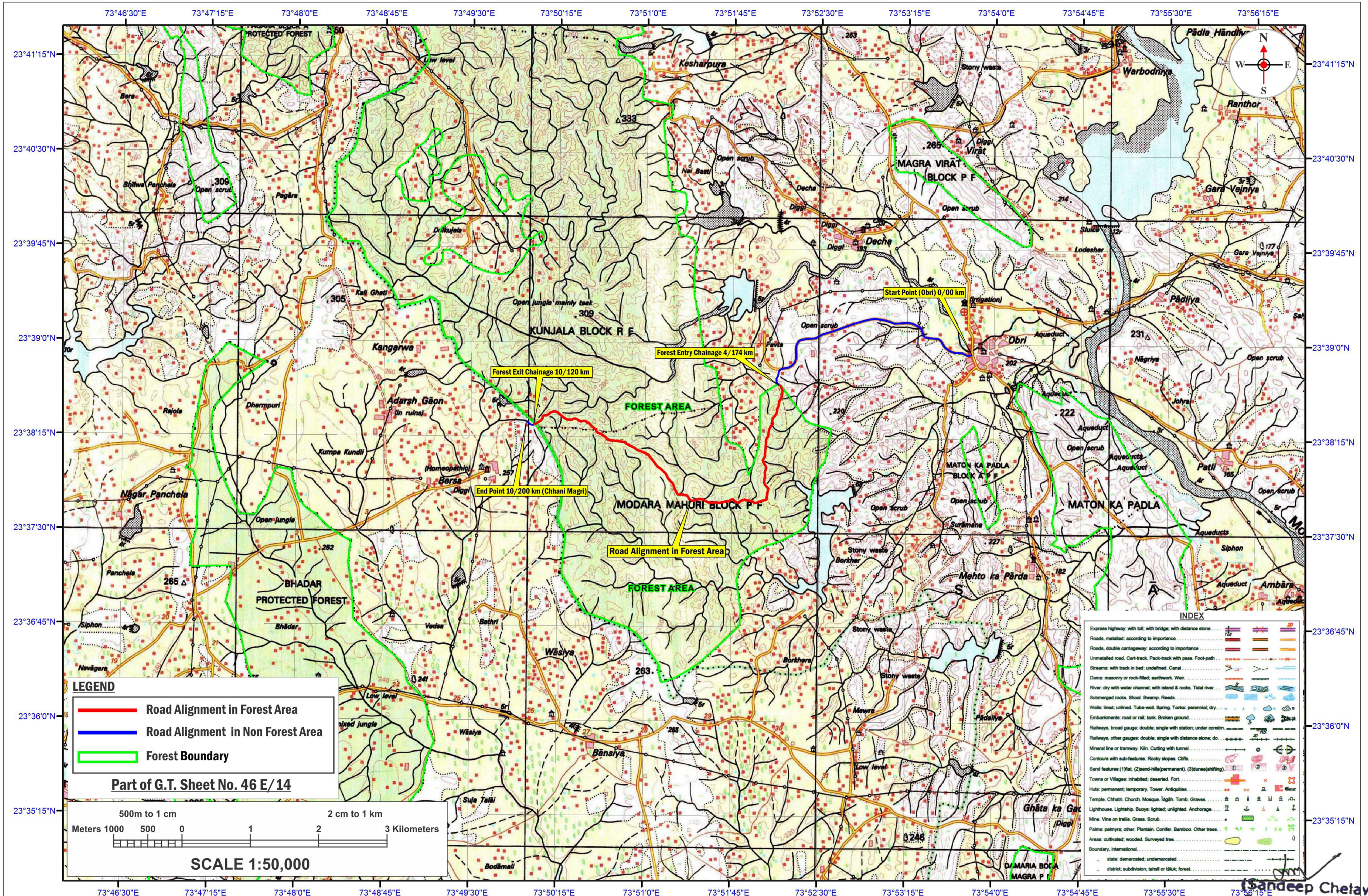


MAP SHOWING GEO-REFERENCED SURVEY OF INDIA TOPOSHEET WITH ROAD ALIGNMENT IN FOREST AND NON FOREST AREA

Project Name : Construction of BT Road from Obri to Chhani Magri (Sagwara) from km 0/00 to km 10/200, in District-Dungarpur in the State of Rajasthan.

Proposal No. : FP/RJ/ROAD/146128/2021 (Applied Area - 4.4595 ha.)



(Sandeep Chelawat)
Executive Engineer
P.W.D. Div. Sagwara



No. F43B14
Scale 1:50,000

F43B9 (46E/9)	F43B13 (46E/13)	F43C1 (46I/1)
F43B10 (46E/10)	Dungarpur RAJASTHAN F43B14 (46E/14)	F43C2 (46I/2)
F43B11 (46E/11) 2 Gandhinagar GUJARAT	F43B15 (46E/15)	Banswara RAJASTHAN F43C3 (46I/3)

1 Udaipur, RAJASTHAN.

भारतीय सर्वेक्षण विभाग SURVEY OF INDIA

1st Edition 2013. Price: ₹ 94/-

- CONVENTIONAL SYMBOLS
- Express highway: with toll; with bridge; with distance stone
 - Roads, metalled: according to importance
 - Roads, double carriageway: according to importance
 - Unmetalled road: Cart-track; Pack-track with pass; Foot-path
 - Streams: with track in bed; undefined; Canal
 - Dams: masonry or rock-filled; earthwork; Weir
 - River: dry with water channel; with island & rocks; Tidal river
 - Submerged rocks, Shoal, Swamp, Reeds
 - Wells: lined; unlined; Tube-well; Spring; Tank; perennial; dry
 - Embankment: road or rail; tank; Broken ground
 - Railways, broad gauge: double; single with station; under constr.
 - Railways, other gauge: double; single with distance stone; do
 - Mineral line or tramway, K.M. Cutting with tunnel
 - Contours with sub-features. Rocky slopes. Cliffs
 - Sand features: (1) flat; (2) sand-hills (permanent); (3) dunes (shifting)
 - Towns or Villages: inhabited; deserted; Fort
 - Huts: permanent; temporary; Tower, Antiquities
 - Temple, Chhatra, Church, Mosque, Idgah, Tomb, Grave
 - Lighthouse, Lightship, Buoy: lighted; unlighted; Anchorage
 - Mine: Vise on trails; Grass, Scrub
 - Palms: palm; other; Plantain, Conifer, Bamboo, Other tree
 - Areas: cultivated; wooded; Surveyed tree
 - Boundary: international
 - state; demarcated; undemarcated
 - district; subdivision, taluk or taluk; forest
 - Boundary, pillars: surveyed; unlocated
 - Heights, triangulated: station; point; approximate
 - Bench-mark: geodetic; tertiary; canal
 - Post office, Telegraph office, Overhead canal
 - Rest house or inspection bungalow, Circuit house, Police station
 - Camping ground, Forest: reserved; protected
 - Spaced names: administrative; locality or tribal
 - Hospital, Dispensary, Veterinary: Hospital / Dispensary
 - Aerodrome, Helipad, Tourist site
 - Power line: with pylons surveyed; with poles unsurveyed

NOTES:-
Heights are in metres and above Indian mean sea level.
Contours are approximate.
A relative height, e.g., 40', represents the approximate height, in metres, between the top and bottom of a steep slope.
Tanks, shown dry, in this area usually contain water from July to January.
Canal distance stone are 1000 feet apart and every fifth stone is shown.
Unmetalled roads in this sheet are motorable in dry season.
Cultivation is periodic and dependent on rainfall.
Digir is a tank which is used for collection of water.

COMPILED INDEX
A Surveyed 1967-68, Updated for major details during 2010-11.

Projection - UTM Datum - WGS 84
Magnetic Variation from True North about 1° West in 2010.
(Changing by about 2' annually).

1:50,000
500 m to 1 cm
2 cm to 1 km
METRES 1000 500 0 1 2 3 Kilometres
CONTOUR INTERVAL 20 METRES

For further details about this map, please contact
Director
Rajasthan Geo-Spatial Data Centre
Survey of India
Sector 10, Vidya-dharmagar
Jaipur.

WEBSITE - www.surveyofindia.gov.in

Reproduction in whole or part by any means is prohibited without the written permission of Survey of India, the National Mapping Agency.

GOVERNMENT OF INDIA COPYRIGHT, 2013.

MAP SHOWING GEO-REFERENCED SURVEY OF INDIA TOPOSHEET WITH ROAD ALIGNMENT IN FOREST AND NON FOREST AREA
Project Name : Construction of BT Road from Obr to Chhani Magri (Sagwara) from km 0/00 to km 10/200, in District-Dungarpur in the State of Rajasthan.
Proposal No. : FP/RJ/ROAD/146128/2021 (Applied Area - 4.4595 ha.)

