

No. G43S7

Scale 1:50,000

G43S2 (45D/2)	G43S6 (45D/6)	G43S10 (45D/10)
G43S3 (45D/3)	G43S7 (45D/7) Banās Kāntha GUJARAT	G43S11 (45D/11)
G43S4 (45D/4) Pātan GUJARAT	G43S8 (45D/8)	G43S12 (45D/12)

1 Mahesāna, GUJARAT.

भारतीय सर्वेक्षण विभाग

SURVEY OF INDIA

1st Edition 2011.

Price:Rs.103/-

CONVENTIONAL SYMBOLS

- Express highway: with toll; with bridge; with distance stone
- Roads, metalled: according to importance
- Roads, double carriageway: according to importance
- Unmetalled road. Cart-track. Pack-track with pass. Foot-path
- Streams: with track in bed; underfined. Canal
- Dams: masonry or rock-filled; earthwork. Weir
- River: dry with water channel; with island & rocks. Tidal river
- Submerged rocks. Shoal. Swamp. Reeds
- Wells: lined; unlined. Tube-well. Spring. Tanks: perennial; dry
- Embankments: road or rail; tank. Broken ground
- Railways, broad gauge: double; single with station; under constn.
- Railways, other gauges: double; single with distance stone; do
- Mineral line or tramway. Kin. Cutting with tunnel
- Contours with sub-features. Rocky slopes. Cliffs
- Sand features: (1) flat. (2) sand-hills (permanent). (3) dunes (shifting)
- Towns or Villages: inhabited; deserted. Fort
- Huts: permanent; temporary. Tower. Antiquities
- Temple. Chhatra. Church. Mosque. Idgah. Tomb. Graves
- Lighthouse. Lightship. Buoys: lighted; unlighted. Anchorage
- Mine. Vine on trellis. Grass. Scrub
- Palms: palmyra; other. Plantain. Conifer. Bamboo. Other trees
- Areas: cultivated; wooded. Surveyed tree
- Boundary, international
- state: demarcated; undemarcated
- district; subdivision; tahsil or taluk; forest
- Boundary pillars: surveyed; unlocated
- Heights, triangulated: station; point; approximate
- Bench-mark: geodetic; tertiary; canal
- Post office. Overhead tank
- Rest house or inspection bungalow. Circuit house. Police station
- Camping ground. Forest: reserved; protected
- Spaced names: administrative; locality or tribal
- Hospital. Dispensary. Veterinary: Hospital / Dispensary
- Aerodrome. Helipad. Tourist site
- Power line: with pylons surveyed; with poles unsurveyed

Proposed O.P.C. Line

REFERENCE

NH-14 National Highway No. 14

NOTES :-

Heights are in metres and above Indian mean sea level.

Contours are approximate.

A relative height, *h*, represents the approximate height, in metres, between the top and a steep slope.

Cart-tracks in this sheet against which there is no descriptive remark are generally motorable (four-wheel drive).

A relative height, *a*, *g*, *g*, against a well, in blue, indicates its total depth in metres.

Tanks, in this area usually contain water from July to April.

Limits of cultivation are variable and dependent on rainfall.

COMPILED INDEX

A Surveyed during 1958-60. Updated for major details during 2005-06.

Projection - UTM Datum - WGS 84

Magnetic Variation from True North about 0° in 2005.

(Increasing by about 1° East annually).

1:50,000

500 m to 1 cm

2 cm to 1 km

Metres 1000 500 0 1 2 3 Kilometres

CONTOUR INTERVAL 20 METRES

For further details about this map, please contact

Director

Gujarat, Damān & Diu Geo-Spatial Data Centre

Survey of India, Sector 10(A)

Gāndhinagar.

WEBSITE - www.surveyofindia.gov.in

Reproduction in whole or part by any means is prohibited without the written permission of Survey of India, the National Mapping Agency.

GOVERNMENT OF INDIA COPYRIGHT, 2011.



REG. No. 910 - SPG D12 (GD & D GDC:150,000:2508'144)(1508 GD&D GDC:1000 KGDC).

भारत के सर्वेक्षणकेंद्रों द्वारा चलाए जा रहे हैं, के निदेशन में प्रकाशित,

Published under the direction of Dr. Swarna Subba Rao, Surveyor General of India,

Survey of India, Hathi Barkala Estate, Post Box No. 37, Delhi Dint - 248001 (Uttarakhand),

Department of Science & Technology, Government of India.

PRINTED AT THE SOUTHERN PRINTING GROUP OF SURVEY OF INDIA.



निर्यात के लिए नहीं NOT FOR EXPORT

OPEN SERIES
MAP

No. G43S11

Scale 1:50,000

4	5	
G43S6 (45D/6)	G43S10 (45D/10)	G43S14 (45D/14)
G43S7 (45D/7)	G43S11 (45D/11) Banās Kāntha GUJARAT	G43S15 (45D/15)
G43S8 (45D/8)	G43S12 (45D/12)	G43S16 (45D/16)
1	2	3

1 Pātan, GUJARAT.
2 Mehāsna, GUJARAT.
3 Sābar Kāntha, GUJARAT.
4 Jālor, RAJASTHAN.

भारतीय सर्वेक्षण विभाग

SURVEY OF INDIA

1st Edition 2011.

Price : Rs. 70/-

CONVENTIONAL SYMBOLS

Express highway with toll; with bridge; with distance stone	...
Roads, metalled; according to importance	...
Roads, double carriageway; according to importance	...
Unmetalled road. Cart-track. Pack-track with pass. Foot-path	...
Streams with track in bed; unflooded. Canal	...
Dams; masonry or rock-filled; earthenwork. Weir	...
River; dry with water channel; with island & rocks. Tidal river	...
Submerged rocks. Shoal. Swamp. Reeds	...
Wells; lined; unlined. Tube-well. Spring. Tanks; perennial; dry	...
Embankments; road or rail; tank. Broken ground	...
Railways, broad gauge; double; single with station; under constr.	...
Railways, other gauges; double; single with distance stone; do.	...
Mineral line or tramway. Kin. Cutting with tunnel	...
Contours with sub-features. Rocky slopes. Cliffs	...
Sand features (1)flat. (2)sand-hills(permanent). (3)dunes(shifting)	...
Towns or Villages; inhabited; deserted. Fort	...
Huts; permanent; temporary. Tower. Antiquities	...
Temples. Chhatra. Church. Mosque. Idgah. Tomb. Graves	...
Lighthouse. Lightship. Buoys; lighted; unlighted. Anchorage	...
Mine. Vine on trellis. Grass. Scrub	...
Palms; palmyra; other. Plantain. Conifer. Bamboo. Other trees	...
Areas; cultivated; wooded. Surveyed tree	...
Boundary, international	...
state; demarcated; undemarcated	...
district; subdivision; tahsil or taluk; forest	...
Boundary pillars; surveyed; unlocated	...
Heights; triangulated; station; point; approximate	...
Bench-mark; geodetic; tertiary; canal	...
Post office. Overhead tank	...
Rest house or inspection bungalow. Circuit house. Police station	...
Camping ground. Forest; reserved; protected	...
Spaced names; administrative; locality or tribal	...
Hospital. Dispensary. Veterinary. Hospital / Dispensary	...
Aerodrome. Helipad. Tourist site	...
Power line; with pylons surveyed; with poles unsurveyed	...

Proposed ORC line

REFERENCE

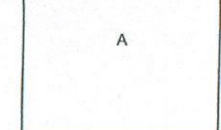
NH 14 National Highway No. 14.

NOTES

Heights are in metres and above Indian mean sea level.
Contours are approximate.
A relative height, & represents the approximate height, in metres, between the top and bottom of a steep slope.
The triangulated heights and contours in this sheet have not been adjusted to the heights of the spirit-levelled benchmarks and may not be strictly in accordance with them but the discrepancy is unlikely to exceed 2 metres.
Tanks, shown dry, in this area, usually contain water from July to September.
Cart-tracks in this sheet are generally not suitable (four-wheel drive).
Distance stones along the railway are in miles.

COMPILATION INDEX

A. Surveyed during 1959-60. Updated for major details during 2005-06.



Projection - UTM Datum - WGS 84

Magnetic Variation from True North about 0° in 2005.
(Increasing by about 1° East annually).

1:50,000

500 m to 1 cm
2 cm to 1 km
Kilometres

CONTOUR INTERVAL 20 METRES

For further details about this map, please contact

Director
Gujarat, Daman & Diu Geo-Spatial Data Centre
Survey of India, Sector 10(A)
Gandhinagar.

WEBSITE - www.surveyofindia.gov.in

Reproduction in whole or part by any means is prohibited
without the written permission of Survey of India, the
National Mapping Agency.

GOVERNMENT OF INDIA COPYRIGHT, 2011.



REG. No. -SPQ D11 (GDBD GDC-150,000)

R.No. 93/41
dt. 15.06.2012

भारत के गणराज्य, स्वयं सत्ता, और, के विचार में प्रकाशित,
Published under the direction of Swarna Subba Rao, B.E., Surveyor General of India,
Survey of India, Hattibarkala Estate, Post Box No.37, Dehra Dun-248001 (Uttarakhand)
Department of Science & Technology, Government of India.

PRINTED AT THE SOUTHERN PRINTING GROUP OF SURVEY OF INDIA.

No. G43S15

Scale 1:50,000

Map of Gujarat showing 10 constituencies for the 2019 Lok Sabha elections. The map is divided into 10 regions, each labeled with a constituency number and its area in square kilometers. The regions are: G43S10 (45D/10) in the northwest, G43S14 (45D/14) in the north-central, G43T2 (45H/2) in the northeast, G43S11 (45D/11) in the west, G43S15 (45D/15) in the central, G43T3 (45H/3) in the east, G43S12 (45D/12) in the southwest, G43S16 (45D/16) in the south-central, and G43T4 (45H/4) in the southeast. The map also shows the borders of Rajasthan to the north and north-east, and the Arabian Sea to the west. The number 1 is marked in the southwest corner.

1 Mehsāna, GUJARĀT.
2 Disputed, GUJARĀT, RĀJASTHĀN.

SURVEY OF INDIA

1st Edition 2011.

Price: Rs.118/—

CONVENTIONAL SYMBOLS

Express highway; with toll; with bridge; with distance stone		20
Roads, double: according to importance		
Roads, double: according to importance		
Unmetalled road, Cart-track, Pack-track with pass, Foot-path		
Streams; with track in bed, undefined, Canal		
Dams; masonry or rock-filled, earthwork, Weir		
River; dry with water channel; with Island & rocks, Tidal river		
Submerged rocks, Shal, Swamp, Reeds		
Wells: lined, unlined, Tube-well, Spring, Tanks; perennial; dry		
Embankments: road or rail; tank, Broken ground		
Railways, broad gauge: double; single with station; under constr.		
Railways, other gauges: double; single with distance stone; do.		
Mineral line or tramway, Kin, Cutting with tunnel		
Contours with sub-features, Rocky slopes, Cliffs		
Sand features (1) flat, (2) hand-splashed, (3) dunes (shifting)		
Towns or Villages: inhabited; deserted, Fort		
Temples; permanent, Temporary, Tower, Antiquities		
Hut, Chhatrai, Church, Mosque, Idgah, Tomb, Graves		
Lighthouse, Lightship, Buoy; lighted; unlighted, Anchorage		
Mine, Vine on trails, Grass, Scrub		
Palms: cultivated, other, Plantation, Conifer, Bamboo, Other trees		
Area: paddy; other, Scrub, Very low		
Boundary, international		
state; demarcated; undemarcated		
district; subdivision; taluk or taluk; forest		
Boundary pillars; surveyed; untraced		
Heights, triangulated; station; point, approximate		△ 200 200 200
Benchmark: geodetic; tertiary; canal		BM 63.3 BM 63.3
Post, Office, Telegraph office, Overhead tank		
Rest house or Inspection bungalow, Circuit house, Police station		
Camping ground, Forest: reserved; protected		
Spaced names: administrative, locality or tribal		KIKRI
Hospital, Dispensary, Veterinary; Hospital / Dispensary		
Aerodrome, Field, Tourist site		
Power line: with pylons surveyed; with poles unsurveyed		

REFERENCE

NH 14 National Highway No.14

NOTES :-

Heights are in metres and above mean sea level.
Contours are approximate.
A relative height, e.g., 8r, represents the approximate height, in metres, between the top and bottom of a steep slope.
A relative height, e.g., 30r, against a well, indicates its total depth in metres.

COMPI LATION INDEX

A. Surveyed during 1959-60. Updated for major details during 2005-06.

Projection - UTM Datum - WGS 84

Magnetic Variation from True North about 0° in 2005.
(Increasing by about 1° East annually)

1:50,000

Metres 1000 500 0 1 2 3 Kilometres

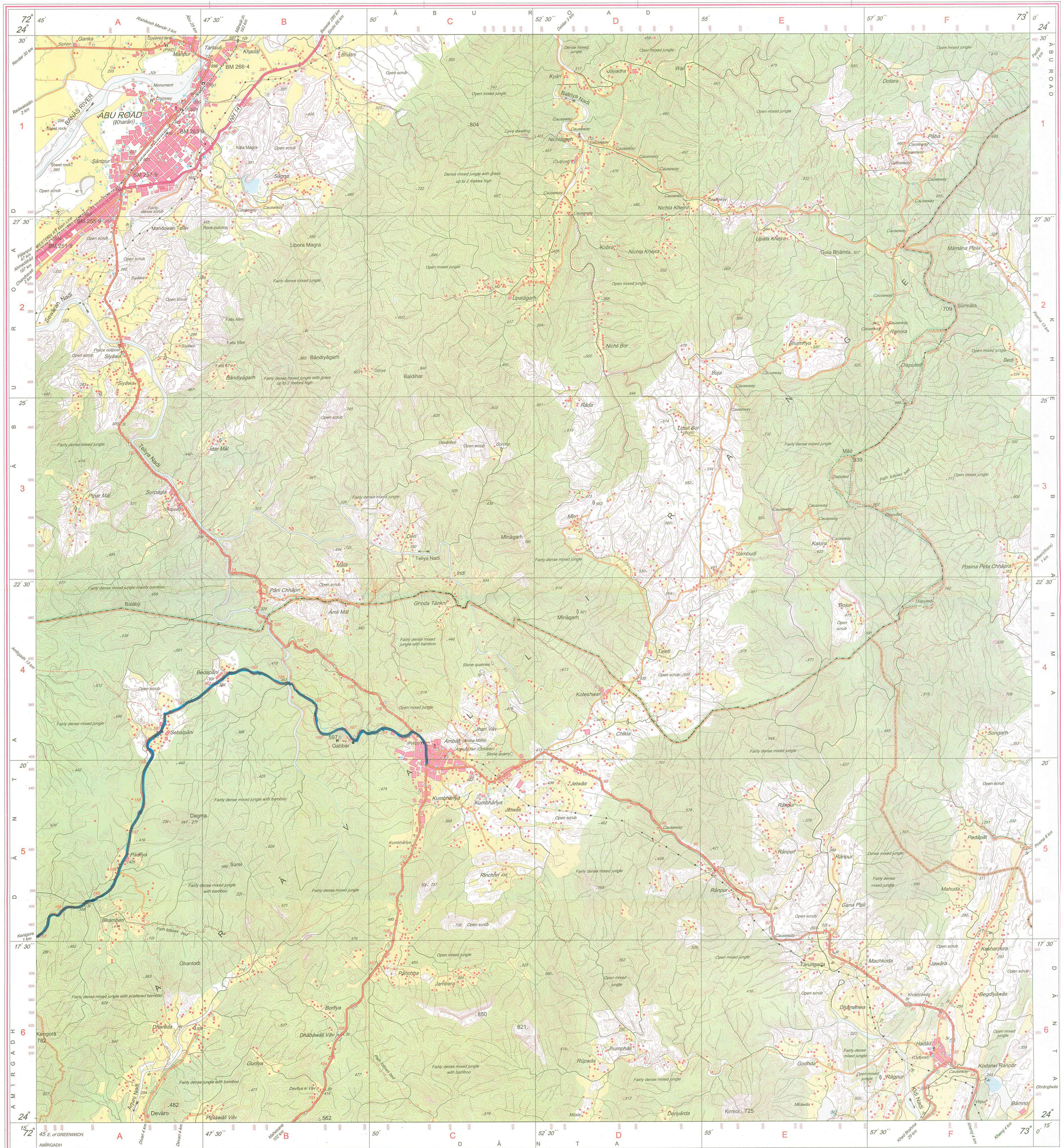
CONTOUR INTERVAL 20 METRES

For further details about this map, please contact
Director
Jalrāt, Damān & Diu Geo-Spatial Data Centre
Survey of India, Sector -10 (A)
Gāndhīnagar.

WEBSITE - www.surveyofindia.gov.in

Reproduction in whole or part by any means is prohibited without the written permission of Survey of India, the National Mapping Agency.

GOVERNMENT OF INDIA COPYRIGHT, 2011.



REG. No. 9956-SPG D '11 (G D & D GDC-1:50,000)-1508 '15

भारत के महापौराध्यक्ष राजेन्द्र मणि त्रिपाठी, एमएससी. (फिजिक्स), पीजीडिप्लोमा (कार्टो) (आईटीसी, नीदरलैंड्स) के निवेदन पर प्रकाशित,
Published under the direction of Rajendra Mani Tripathi, M.Sc. (Physics), P.G. Diploma (Carto) (ITC, The Netherlands) Surveyor General of India
Survey of India, Hāthibarkala Estate, Post Box No. 37, Dehra Dūn - 248001 (Uttarākhānd),
Department of Science & Technology, Government of India.

PRINTED AT THE SOUTHERN PRINTING GROUP OF SURVEY OF INDIA.