

# Area Proposed to be Diverted for laying of Overhead Optical Fibre Cable by BSNL under Darugre, Songsak & Rongrenggre RF Measuring 0.765 Ha

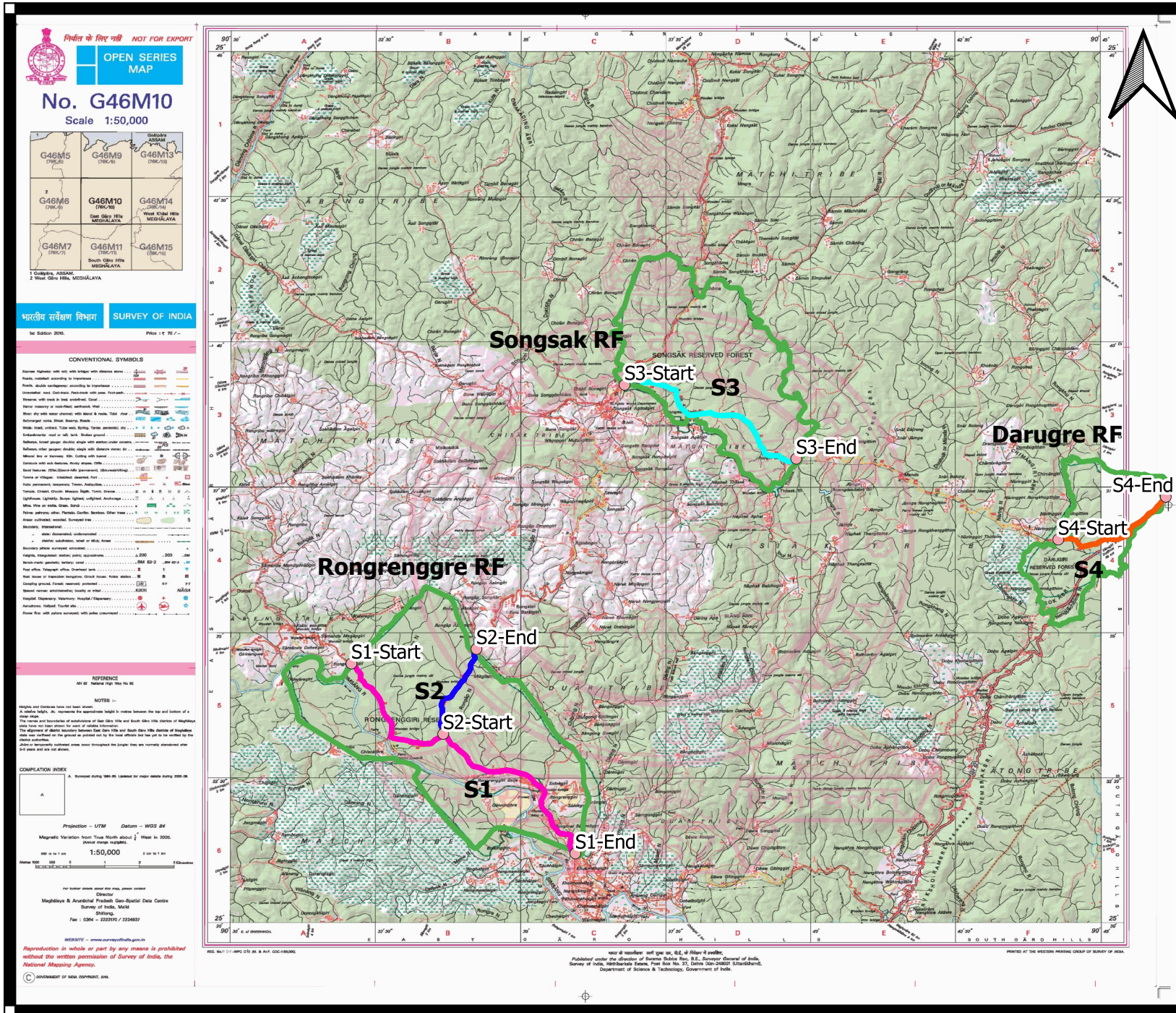
## LEGEND

BSNL OFC - Segments

- S1 : 11.3 Kms-0.339 Ha
- S2 : 3.2 Kms-0.096 Ha
- S3 : 7 Kms-0.21 Ha
- S4 : 4 Kms-0.12 Ha
- Reserve Forest Boundary

Name	Lat	Long
S1-End	25°31'10.86"N	90°35'56.51"E
S1-Start	25°34'27.30"N	90°32'04.84"E
S2-End	25°34'42.37"N	90°34'14.20"E
S2-Start	25°33'14.48"N	90°33'39.83"E
S3-End	25°37'59.13"N	90°39'45.04"E
S3-Start	25°39'15.59"N	90°36'47.46"E
S4-End	25°37'19.76"N	90°46'07.34"E
S4-Start	25°36'35.53"N	90°44'16.11"E

Submitted by





**Area Proposed to be Diverted for laying of Overhead Optical Fibre Cable by BSNL under Darugre, Songsak & Rongrenggre RF Measuring 0.765 Ha**

## LEGEND

## BSNL OFC - Segments

**S1 : 11.3 Kms-0.339 Ha**

**S2 : 3.2 Kms-0.096 Ha**

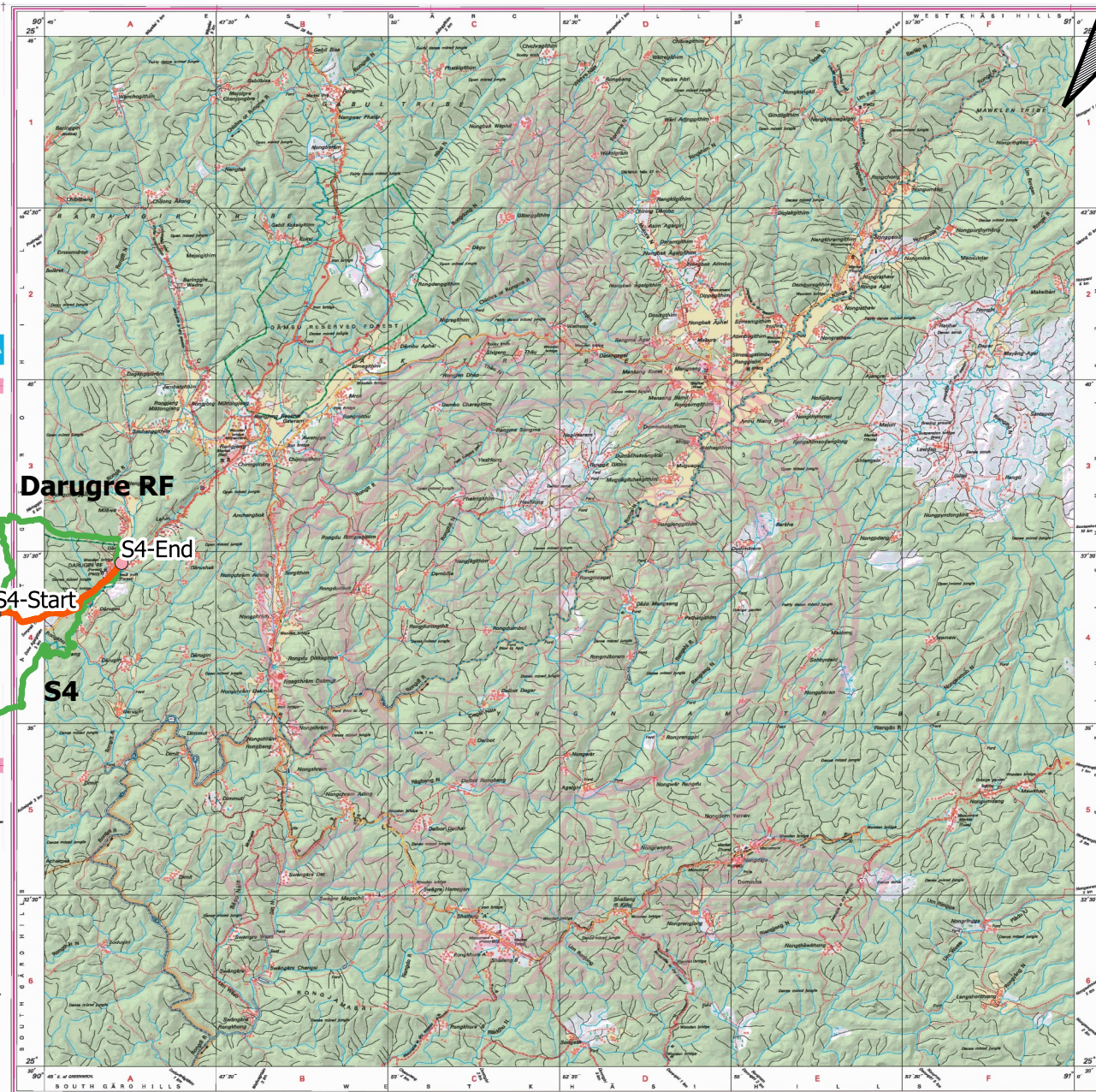
 S3 : 7 Kms-0.21 Ha

 S4 : 4 Kms-0.12 Ha

 Reserve Forest Boundary

Name	Lat	Long
S1-End	25°31'10.86"N	90°35'56.51"E
S1-Start	25°34'27.30"N	90°32'04.84"E
S2-End	25°34'42.37"N	90°34'14.20"E
S2-Start	25°33'14.48"N	90°33'39.83"E
S3-End	25°37'59.13"N	90°39'45.04"E
S3-Start	25°39'15.59"N	90°36'47.46"E
S4-End	25°37'19.76"N	90°46'07.34"E
S4-Start	25°36'35.53"N	90°44'16.11"E

Submitted by



प्रातः के नवार्चन के निमित्त मे प्रार्थित,  
Published under the direction of Surveyor General of India,  
Survey of India, Hrishibarkala Estate, Post Box No. 37, Dehra Dûn - 248001 (Uttarakhand)  
Department of Science & Technology, Government of India.

REPRODUCED AT THE NATIONAL ARCHIVES DUE TO THE SCARCITY OF ORIGINALS