

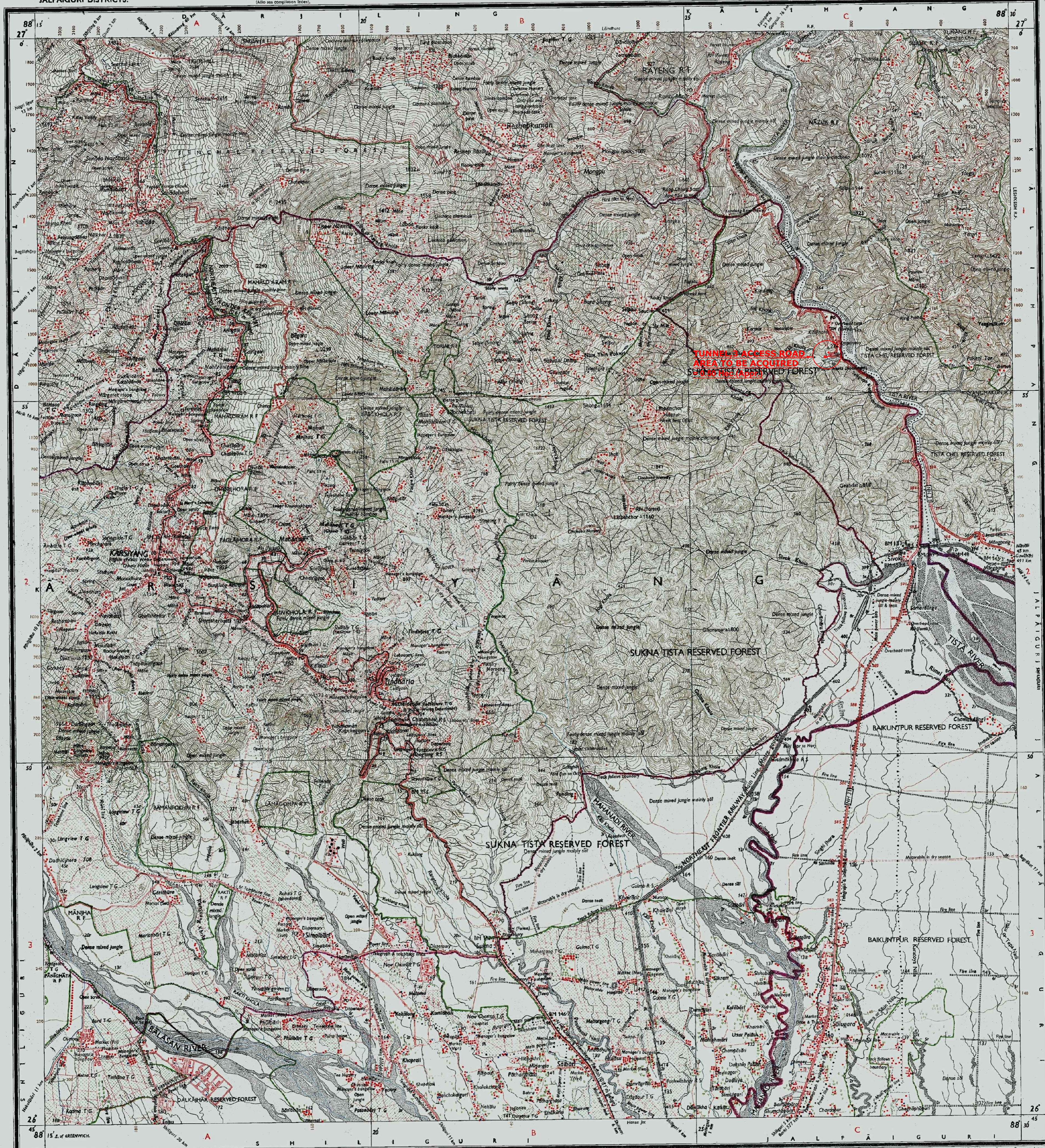
RESTRICTED

पश्चिमी बंगाल
WEST BENGAL

SECOND EDITION

INDIA
REFER TO THIS MAP AS - I:50,000
SHEET 78 B/5 SECOND EDITION

NO. 78 B/5

DARJILING AND
JALPAIGURI DISTRICTS.Surveyed, 1965-66, 1969-71.
Also see Supplementary Notes.Magnetic Variation from True North about 5° West in 1985.
(Annual change negligible).

Ref No. 3283-100 D/87 (DO 31-10-2000) H/104/91

अधिका. के. महाश्वरधर सिंह-अधिका. निरीक्षक वृ. अ. अ. अ. के. निरीक्षण में प्रेषित,
Published under the direction of Lieutenant-General Girdhar Chandra Agarwal, Surveyor General of India.

1987

I: 50,000

500 m to 1 km

2 cm to 1 km

HEIGHTS & CONTOURS IN METRES

CONTOUR INTERVAL 20 METRES

Water features are shown in blue where they generally contain water.
Contoured areas are coloured yellow.
The exterior boundaries of areas of Reserved or Protected Forests are shown by green ribbons.Contours are approximate.
A relative height, i.e., one representing the approximate height, in metres, between the top and bottom of a steep slope.
Wooded areas are coloured green. Shaded trees and other vegetation are in black, but prominent surveyed trees are in black.The uncoloured heights and contours in this sheet, except in squares A/1, A/2, B/1 and west half of square B/2 have not been adjusted to the heights of the spirit-levelled benchmarks, and may not be strictly in accordance with them.
Permissions to use roads inside Tea Gardens are required from the Tea Garden authorities.REFERENCES
NH 31 National Highway No. 31.

T.G. Tea Garden.

COMPILED INDEX

A Compiled from 1:50,000 survey, 1969-71.

B Compiled from 1:50,000 survey, 1965-66 with corrections as a result of verification survey in respect of major details carried out during 1969-70.

Administrative Index

DARJILING

JALPAIGURI

Towns or Villages: established, temporary, Fort, Antiquities, etc.
Huts: permanent, temporary, Fort, Antiquities, etc.
Temples, Churches, Mosques, Jang, Tomb, Graves, etc.
Lighthouses, Lightships, Shipyards, Lightships, Anchorage, etc.
Mines, Vines, on traffic, Grass, Scrub, etc.
Palms, palm-leaf, etc.
Boundary, international, etc.
State demarcation, undemarcated, etc.
District, subdivision, or taluk, etc.
Boundary pillars, survey, etc.
Height, triangulation, station, point, approximate, etc.
Bench mark, geodetic, survey, etc.
Post office, telegraph office, combined office, Police station, etc.
Dung, etc.
Circuit house, Camp ground, forest, reserved, protected, etc.
Spaced names: administrative, locality or tribe, etc.

GOVERNMENT OF INDIA COPYRIGHT, 1987.

Price: Ten Rupees.

RESTRICTED

This map is NOT to be published, copied or reproduced in any form or by any means, whether by any means, without the written permission of the Survey of India.

REFER TO THIS MAP AS - I:50,000
SHEET 78 B/5 SECOND EDITION

INDIA

भारत

उपमुख्य अभियंता/निर्माण
पू० सी० रेलवे, न्यु जलपाईगुरी
Deputy Chief Engineer/COM
N.F. Railway, New Jalpaiguri