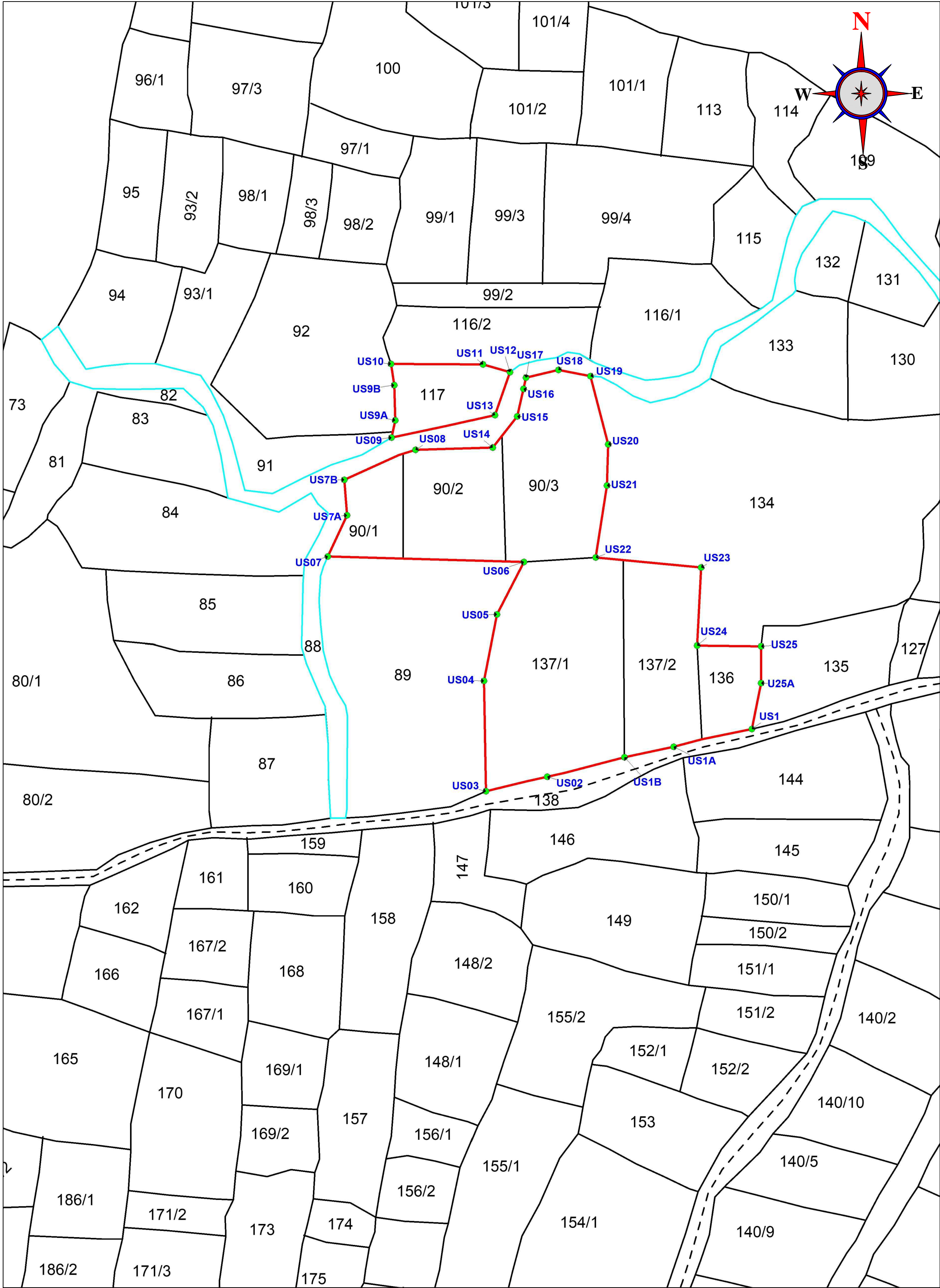
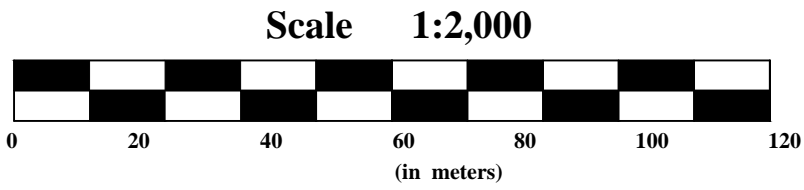


GEO REFERENCED CADASTRAL MAP OF DGPS SURVEYED AREA FOR GOLF OIL CORPORATION LTD., AT VILLAGE- USLAPUR, DISTRICT -BEMETARA (C.G.)

CO-ORDINATES OF THE FIXED BOUNDARY POINT BY DGPS SURVEY WITH LAND CLASSIFICATION



District	Tehsil/ Village	Type of Land	Khasra No.	Surveyed Area in Hect.	POINT NAME	LONGITUDE	LATITUDE	ELEVATION			
Bemetara	Bemetara /Uslapur	Private Revenue Land	117	0.30	US09	81° 40' 31.81052"E	21° 45' 48.84107"N	268.185			
					US9A	81° 40' 31.80721"E	21° 45' 49.32001"N	268.251			
					US9B	81° 40' 31.82121"E	21° 45' 50.08322"N	268.360			
					US10	81° 40' 31.77541"E	21° 45' 50.67401"N	268.940			
					US11	81° 40' 33.60513"E	21° 45' 50.67395"N	268.583			
					US12	81° 40' 34.43969"E	21° 45' 50.48463"N	267.937			
								US13	81° 40' 33.90601"E	21° 45' 49.35243"N	267.790
			90/1	0.80	US01	81° 40' 40.13652"E	21° 45' 42.67524"N	273.302			
			90/2	0.50	US1A	81° 40' 38.37362"E	21° 45' 42.43324"N	274.451			
			90/3	0.27	US1B	81° 40' 37.21441"E	21° 45' 42.15242"N	274.353			
			137/1	1.23	US02	81° 40' 35.57509"E	21° 45' 41.83695"N	274.380			
			137/2	0.70	US03	81° 40' 33.69289"E	21° 45' 41.36420"N	273.430			
			136	0.20	US04	81° 40' 33.84257"E	21° 45' 43.64085"N	271.766			
					US05	81° 40' 34.14714"E	21° 45' 45.06260"N	270.472			
					US06	81° 40' 34.82883"E	21° 45' 46.30377"N	269.753			
					US07	81° 40' 30.14563"E	21° 45' 46.24913"N	268.711			
					US7A	81° 40' 30.24842"E	21° 45' 47.05923"N	268.580			
					US7B	81° 40' 30.62640"E	21° 45' 48.01681"N	268.980			
					US08	81° 40' 32.26810"E	21° 45' 48.64927"N	268.547			
					US14	81° 40' 34.11726"E	21° 45' 48.95673"N	267.984			
					US15	81° 40' 34.69776"E	21° 45' 49.40303"N	267.803			
					US16	81° 40' 34.85283"E	21° 45' 50.03645"N	267.771			
					US17	81° 40' 34.91410"E	21° 45' 50.28483"N	267.691			
					US18	81° 40' 35.67723"E	21° 45' 50.46121"N	267.809			
					US19	81° 40' 36.51774"E	21° 45' 50.40418"N	267.681			
					US20	81° 40' 36.86948"E	21° 45' 48.84257"N	269.976			
					US21	81° 40' 36.68083"E	21° 45' 47.98269"N	271.094			
					US22	81° 40' 36.38592"E	21° 45' 46.26996"N	272.211			
					US23	81° 40' 39.05024"E	21° 45' 46.13630"N	270.791			
					US24	81° 40' 38.82772"E	21° 45' 44.60841"N	271.818			
					US25	81° 40' 40.08121"E	21° 45' 44.64233"N	273.174			
								U25A	81° 40' 40.08221"E	21° 45' 43.72223"N	273.550
			TOTAL			7	4.00 Hect.				
			BASE POINT					BASE	81° 40' 17.64305"E	21° 46' 02.07009"N	276.584
			GROUND CONTROL POINT 1					GCP1	81° 40' 07.06345"E	21° 46' 26.19021"N	268.250
			GROUND CONTROL POINT 2					GCP2	81° 41' 08.48162"E	21° 46' 02.99342"N	270.841



INDEX

- DGPS POINT
- DGPS SURVEYED ARE.
- DGPS POINT NUMBER
- KHASRA NUMBER
- KHASRA BOUNDARY
- SEASONAL NALA
- CART ROAD

ववन मंडलाधिकारी,
रायपुर

R.K. Singh
Authorised Signatory
Sales Manager
Gulf Oil Corporation Ltd.
(C.G.)

अवन मंडलाधिकारी
रायपुर उपवनमंडल
रायपुर (छ.ग.)

COMPENSATORY AFFORESTATION AREA, SURVEYED BY DGPS FOR GULF OIL CORPORATION LTD., BILASPUR , CHHATTISGARH

APPLICANT

SALES MANAGER
GULF OIL CORPORATION LTD.
BILASPUR (C.G.)

TYPE OF LAND - REVENUE LAND
SURVEYED AREA - 4.00 HECT.
VILLAGE - USLAPUR
TEHSIL - BEMETARA
DISTRICT - BEMETARA
Date of Survey -18-05-2017

SURVEYED BY

NAVEEN NIRMALKAR
GEOLOGIST

ALOK VERMA
MANAGER (OPERATION)

SIDDHARTH GEO CONSULTANTS
621//3, 1st FLOOR, RAMKUND SAMTA COLONY,
BEHIND LIFEWORTH HOSPITAL,RAIPUR (C.G.)
PIN 492001 PH NO. - 0771- 4070731
Email - sgc_rai@yahoo.co.in