

टोपोशीट मैप – मुजफ्फरनगर शहरी गैस वितरण परियोजना इन्द्रप्रस्थ गैस लिमिटेड द्वारा 12 इंच भूमिगत प्राकृतिक गैस पाईप लाईन भैंसी बाईपास से खतौली बाईपास (किमी 0.00 से किमी 9.200) तथा खतौली बाईपास से मुजफ्फरनगर बॉर्डर (एन 0 एच 0-58, किमी 92.290 से किमी 90.290) (कुल ल 0-11.200 किमी 0) तक बिछाने हेतु

निर्यात के लिए नहीं NOT FOR EXPORT

OPEN SERIES MAP

**No. H43R11**

Scale 1:50,000

H43R6 (53G/6)	H43R10 (53G/10)	H43R14 (53G/14)
H43R7 (53G/7)	H43R11 (53G/11)	H43R15 (53G/15)
H43R8 (53G/8)	H43R12 (53G/12)	H43R16 (53G/16)

1 Haridwar, UTTARAKHAND.

भारतीय सर्वेक्षण विभाग SURVEY OF INDIA

1st Edition 2009. Price : Rs. 50/-

**CONVENTIONAL SYMBOLS**

Express Highway, with toll, with bridge, with distance stone

Roads, installed, according to importance

Roads, double carriageway, according to importance

Unsettled road, Cart-track, Pack-track with pass, Foot-path

Streams, with track in bed, undefined, Canal

Dam, masonry or rock-filled, earthwork, Weir

River, dry with water channel, with island & rocks, Tidal river

Submerged rocks, Shoal, Swamp, Floods

Wells: lined, unlined, Tube-well, Spring, Tanks, perennial, dry

Embankments: road or rail, bank, floodplain ground

Railways, broad gauge, double single with station, under construction

Railways, other gauges: double, single with distance stone, do.

Mineral line or tramway, Kin, Cutting with tunnel

Contours with sub-features, Rocky slopes, Cliffs

Sand features: (1) flat, (2) dune, (3) permanent, (4) dune (shifting)

Towns or Villages: inhabited, deserted, Fort

Hulk: permanent, temporary, Tower, Antiquities

Temples, Chhatra, Church, Mosque, Jogi, Tomb, Graves

Lighthouse, Lightship, Buoy, lighted, unlighted, Anchorage

Mine, Vire or Vire, Green, Sand

Purms, railways, other, Plantain, Conifer, Bamboo, Other trees

Areas: cultivated, wooded, Surveyed tree

Boundary, international

state: demarcated, undemarcated

district: subdivision, taluk or taluk, forest

Boundary pillars: surveyed, unlocated

Height, triangulated: station, point, approximate

Bench-mark: geodetic, tertiary, canal

Post office, Telegraph office, Overhead tank

Rail house or inspection bungalow, Coal house, Police station

Camping ground, Forest: reserved, protected

Speed names: administrative, locality or tribal

Hospital, Dispensary, Veterinary Hospital / Dispensary

Aerodrome, Helipad, Tourist site

Power line: with pylons surveyed, with poles unsurveyed

**Legend**

Proposed Gas Pipeline

**REFERENCE**

NH 58 National Highway No. 58

**NOTES**

Heights are in metres and above Indian mean sea level.

Contours are approximate.

A relative height, e.g. -10, indicates the approximate height, in metres, between the top and bottom of a steep slope.

A relative height, e.g. -10, against a well, indicates its total depth in metres.

Time shown in the time zone of India, Indian Standard Time, is shown.

Wells and Tube-wells are numerous throughout the sheet; only the important ones have been shown.

Cart-racks and unmetalled roads along canals are noticeable in dry season. Permission to use these is required from the irrigation authorities.

The kilometre stone numbers along roads, railway and canals are shown in start type, e.g. '5', whereas milestone numbers are shown in upright type, e.g. '5'.

The areas adjoining the Hindon River and Kali Nadi (West) are liable to change owing to continual fluctuations in the course of these rivers.

The district and taluk boundaries where following the main deep water channel of Hindon river and Kali Nadi (West) will change the fluctuation of these channels.

**COMPILATION INDEX**

A Modern Survey 1987-88, Updated for major details during 2005-06

**Projection - UTM Datum - WGS 84**

Magnetic Variation from True North about 3° East in 2005. (Increasing by about 1° annually).

1:50,000

600 m to 1 cm

2 cm to 1 km

CONTOUR INTERVAL 10 METRES

For further details about this map, please contact

Additional Surveyor General

Uttarakhand and west Uttar Pradesh Geo-Spatial Data Centre

Survey of India 17.E.C.Road

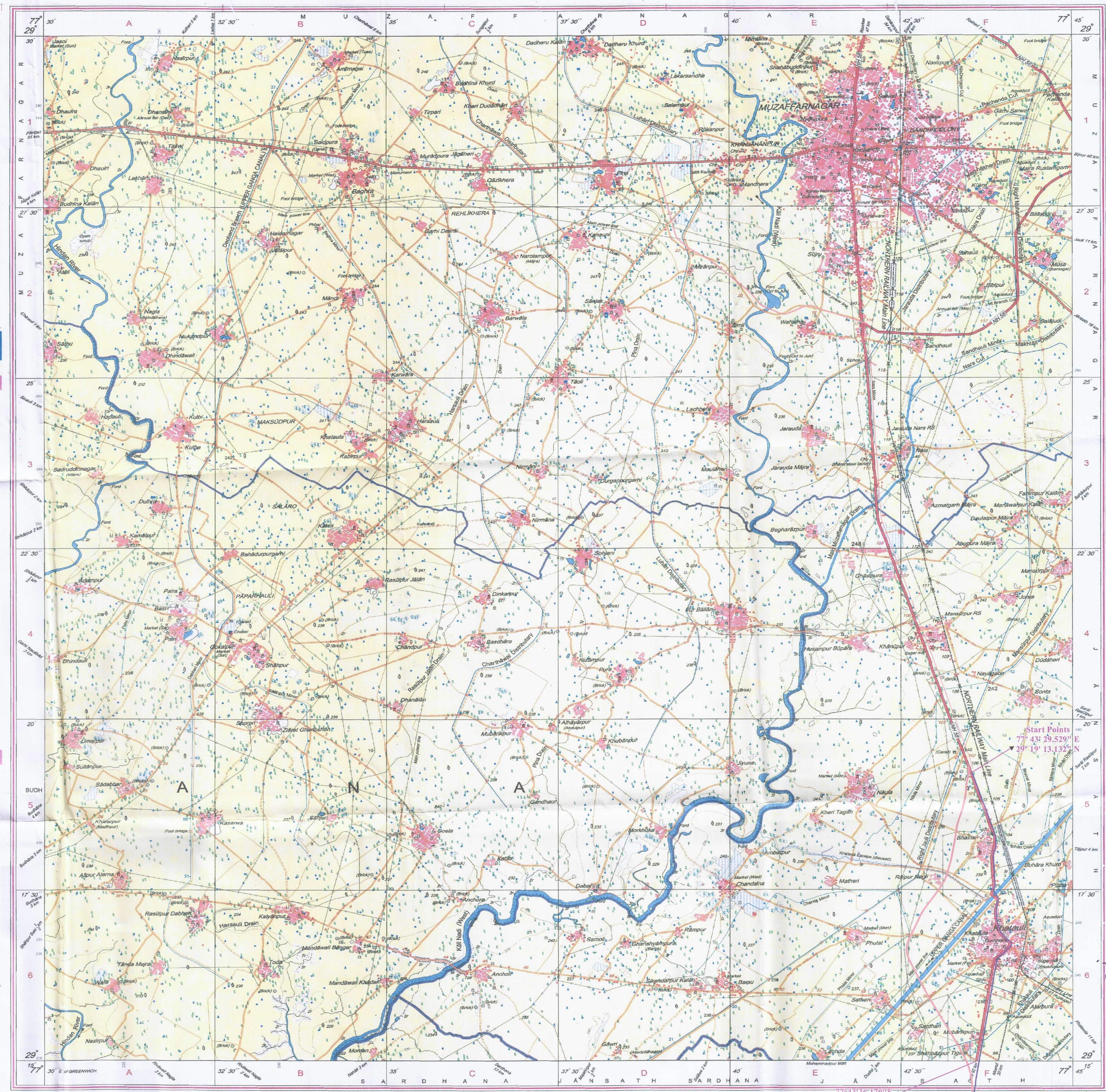
Dehra Dun.

Fax: 0135-2656402

**WEBSITE - www.surveyofindia.gov.in**

Reproduction in whole or part by any means is prohibited without the written permission of Survey of India, the National Mapping Agency.

GOVERNMENT OF INDIA COPYRIGHT, 2009.



SOMIL GARG  
Addl. General Manager  
Indraprastha Gas Limited  
102, Bhawan, Plot No. 4, R.K. Puram  
Sector-8, New Delhi-110022

भारत के सर्वेक्षकों के दिशान में प्रकाशित  
Published under the direction of Surveyor General of India,  
Survey of India, Hathibarkala Estate, Post Box No.37, Dehra Dun-248001 (Uttarakhand),  
Department of Science & Technology, Government of India.

PRINTED AT THE WESTERN PRINTING GROUP OF SURVEY OF INDIA.



टोपोशीट मैप - मुजफ्फरनगर शहरी गैस वितरण परियोजना इन्द्रप्रस्थ गैस लिमिटेड द्वारा 12 इंच भूमिगत प्राकृतिक गैस पाईप लाईन में सी बाईपास से खतौली बाईपास (किमी 0.00 से किमी 9.200) तथा खतौली बाईपास से मुजफ्फरनगर बॉर्डर (एन 0 एच 0-58, किमी 0 92.290 से किमी 0 90.290) (कुल ल 0-11.200 किमी 0) तक बिछाने हेतु



निर्गत के लिए नहीं NOT FOR EXPORT

OPEN SERIES MAP

No. H43R12

Scale 1:50,000

H43R7 (53G/7)	Muzaffarnagar UTTAR PRADESH H43R11 (53G/11)	H43R15 (53G/15)
H43R8 (53G/8)	H43R12 (53G/12) UTTAR PRADESH	H43R16 (53G/16)
H43X5 (53H/5)	H43X9 (53H/9)	H43X13 (53H/13)

1 Gautam Budh Nagar, UTTAR PRADESH.  
2 Ghaziabad, UTTAR PRADESH.

भारतीय सर्वेक्षण विभाग

SURVEY OF INDIA

1st Edition 2011.

Price: ₹ 70/-

#### CONVENTIONAL SYMBOLS

Express highway: with toll, with bridge with distance stone	30
Roads, metalled, according to importance	20
Roads, double carriageway, according to importance	10
Unmetalled road, cart-track, pack-track with pass. Foot-path	5
Stream: with back in bed, undefined, Canal	2
Dam: masonry or rock-filled, outwork, Weir	1
River: dry with water channel, with island & rocks. Tidal river	0.5
Shoal, sand, mud, rocks, Swamp, Reeds	0.2
Well: lined, unlined, Tube-well, Spring, Tank: perennial, dry	0.1
Embankment: road or rail, embankment, Broken ground	0.05
Railway: broad gauge, double single with station, under construction	0.02
Railway: other gauges: double, single, with distance stone, disused	0.01
Mineral line or tramway, Kite, Cutting with tunnel	0.005
Contours with sub-features, Rocky slopes, Cliffs	0.002
Sand features: (Shrub), (Sandy), (Sandy), (Sandy)	0.001
Towns or Villages: inhabited, deserted, Fort	0.0005
Habit: permanent, temporary, Tower, Antiquities	0.0002
Temple, Church, Mosque, Light, Tomb, Grave	0.0001
Lighthouse, Lightship, Buoy, light, unlighted, Anchorage	0.00005
Min. View on hills, trees, Road	0.00002
Palms: palm, other, Pinnacles, Conifer, Bamboo, Other trees	0.00001
Areas: cultivated, wooded, Surveyed tree	0.000005
Boundary, International	0.000002
State demarcated, undemarcated	0.000001
District: subdivision, label or blank, forest	0.0000005
Boundary, Pillars, surveyed, unsurveyed	0.0000002
Height, triangulated, station: point, approximate	0.0000001
Bench-mark, geodetic, tertiary, canal	0.00000005
Post office, Telegraph office, Overhead, Cable	0.00000002
Rail house or inspection hut, Junction, Circuit house, Police station	0.00000001
Camping ground, Forest: reserved, protected	0.000000005
Special names: administrative, locality or tribal	0.000000002
Hospital, Dispensary, Veterinary, Hospital / Dispensary	0.000000001
Aerodrome, Helipad, Tourist site	0.0000000005
Power line: with pylons surveyed, with poles unsurveyed	0.0000000002

#### Legend

Proposed Gas Pipeline

#### REFERENCES

NH 58, 119 National Highway No. 58, 119, 517 82 State Highway No. 82

#### NOTES

Heights are in metres and above Indian mean sea level. Contours are approximate. A relative height, h, represents the approximate height, in metres, between the top and bottom of a steep slope. The alternate route numbers along roads, railway and canals are shown in small type e.g. 58/119. Mileage numbers are shown in upright type e.g. 5. Contour and immediate roads in this sheet are generally measurable in dry season. Permission to use these along canals is required from the irrigation authorities. The area between the Indian River and the Indian River is liable to change owing to continual fluctuations in the courses of these rivers. Wells and tube-wells are indicated throughout the sheet; only the important ones have been shown. Tides, shown in this area, usually contain water from July to December. The district boundary between the main deep water channels of the Indian River and the Indian River (West) will change with the fluctuations of these channels.

#### COMPILATION INDEX

A. Surveyed during 1970-71. Updated for major details during 2005-06.

Projection - UTM Datum - WGS 84

Magnetic Variation from True North about 3° East in 2005.

(increasing by about 1° annually).

1:50,000

CONTOUR INTERVAL 10 METRES

For further details about this map, please contact

Additional Surveyor General

Uttarakhand and West Uttar Pradesh Geo-Spatial Data Centre

Survey of India, 17 E.C. Road, Karanpur

Delhi 110 016.

Fax: 0115 - 2656462

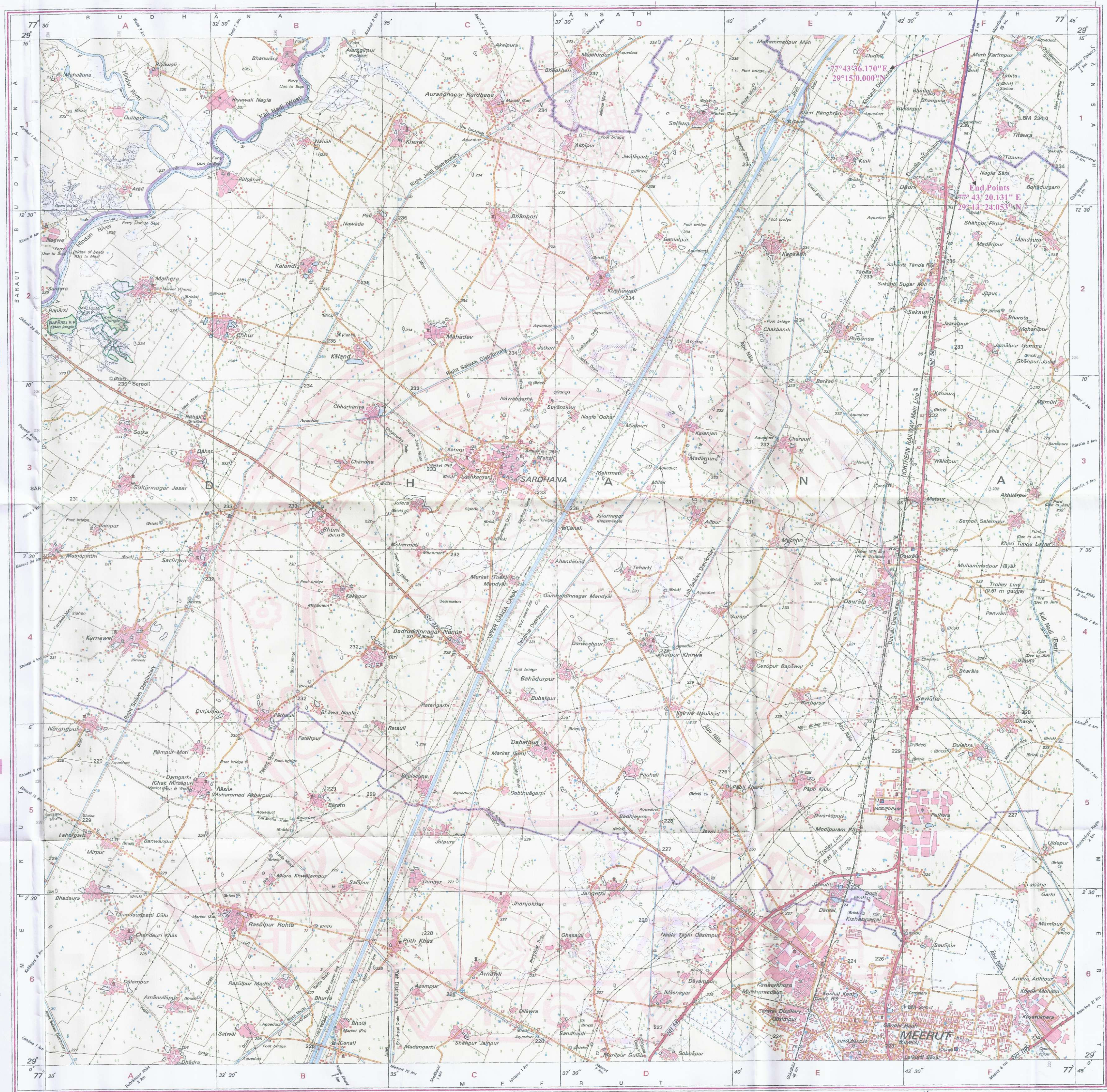
WEBSITE - www.surveyofindia.gov.in

Reproduction in whole or part by any means is prohibited

without the written permission of Survey of India, the

National Mapping Agency.

GOVERNMENT OF INDIA COPYRIGHT, 2011.



REGD. No. 2010/11-WP/115 (Uttarakhand & West UP) DC-150-000-10-15

अनु के भारतीय गैस लिमिटेड द्वारा 12 इंच भूमिगत प्राकृतिक गैस पाईप लाईन में सी बाईपास से खतौली बाईपास (किमी 0.00 से किमी 9.200) तथा खतौली बाईपास से मुजफ्फरनगर बॉर्डर (एन 0 एच 0-58, किमी 0 92.290 से किमी 0 90.290) (कुल ल 0-11.200 किमी 0) तक बिछाने हेतु

SOMIL GARG  
Addl. General Manager  
Indraprastha Gas Limited  
IGL Bhawan, Plot No. 4, R.K. Puram  
Sector-9, New Delhi-110022

PRINTED AT THE WESTERN PRINTING GROUP OF SURVEY OF INDIA.