



नियत के लिए नहीं NOT FOR EXPORT

No. F42K16

Scale 1:50,000

F42K11 (41J/11)	F42K15 (41J/15)	F42L3 (41N/3) Sardarnagar GUJARAT
F42K12 (41J/12)	F42K16 (41J/16)	F42L4 (41N/4)
F42Q9 (41K/9)	F42Q13 (41K/13)	F42R1 (41O/1) 3 Amrol GUJARAT

1. Jambhagar, GUJARAT

1st Edition 2014- 68X610-073

CONVENTIONAL SYMBOLS

Express highway, with toll, with bridge, with distance stone	20
Roads, metalled, according to importance	
Roads, double carriageway, according to importance	
Unmetalled road, Cart-track, Pack-track with pass, Foot-path	
Streams with track in bed, undefined Canal	
Dams, masonry or rock-filled, earthwork, Weir	
Submerged rocks, Shoal, Swamp, Reeds	
Walls, lined, unfired, Tube-well, Spring, Tanks, perennial, dry	
Embankments, road or rail, tank, Broken ground	
Railways, broad gauge, double, single with station, under construction	
Railways, other gauges, double, single with distance stone, do.	
Mineral line or tramway, Km. Cutting with tunnel	
Contours with sub-features, Rocky slopes, Cliffs	
Sand features (Tidal, (2) sand-hills(permanent), (3) dunes(changing))	
Towns or Villages, inhabited, deserted, Fort	
Huts, permanent, temporary, Tower, Antiquities	
Temples, Chhat, Church, Mosque, Idgah, Tomb, Graves	
Lighthouse, Lightship, Buoys, lighted, unlighted, Anchorage	
Mine, Vine on trellis, Grass, Scrub	
Palms, palms, other, Plantain, Conifer, Bamboo, Other trees	
Areas, cultivated, wooded, Surveyed tree	
Boundary, international	
state, demarcated, undemarcated	
district, subdivision, tahsil or taluk, forest	
Boundary pillars, surveyed, unlocated	
Heights, triangulated, station, point, approximate	200 200 200
Bench-mark, geodetic, levelling, canal	BM 63.3 BM 63.3
Post office, Telegraph office, Overhead tank	
Rest house or inspection bungalow, Circuit house, Police station	
Camping ground, Forest, reserved, protected	RF PF
Spaced names, administrative, locality or tribal	KIKRI NAGA
Hospital, Dispensary, Veterinary, Hospital/Dispensary	
Aerodrome, Helipad, Tourist site	
Power line, with pylons surveyed, with poles unsurveyed	

REFERENCE

NH-83 National Highway No. 83

NOTES

Heights are in metres and above Indian mean sea level.
Contours are approximate.
A relative height, e.g., 100, represents the approximate height, in metres, between the top and bottom of a steep slope.
Tide-gauges are numerous throughout the sheet, only the important ones have been shown.
Unmetalled roads and cart-roads in this sheet are generally unsuitable in dry season. Permission to use those along canals is required from irrigation authorities.
The triangulated heights and contours in this sheet have not been adjusted to the heights of the spirit-levelled bench-marks and may not be strictly in accordance with them.

COMPILATION INDEX

A. Surveyed during 1967-68. Updated for major details during 2005-06.

Projection - UTM Datum - WGS 84

Magnetic Variation from True North about 1/2° West in 2005.
(Decreasing by about 1' annually).

1:50,000

500 m to 1 cm
Metres 1000 500 0 1 2 cm to 1 km
Kilometres

CONTOUR INTERVAL 20 METRES

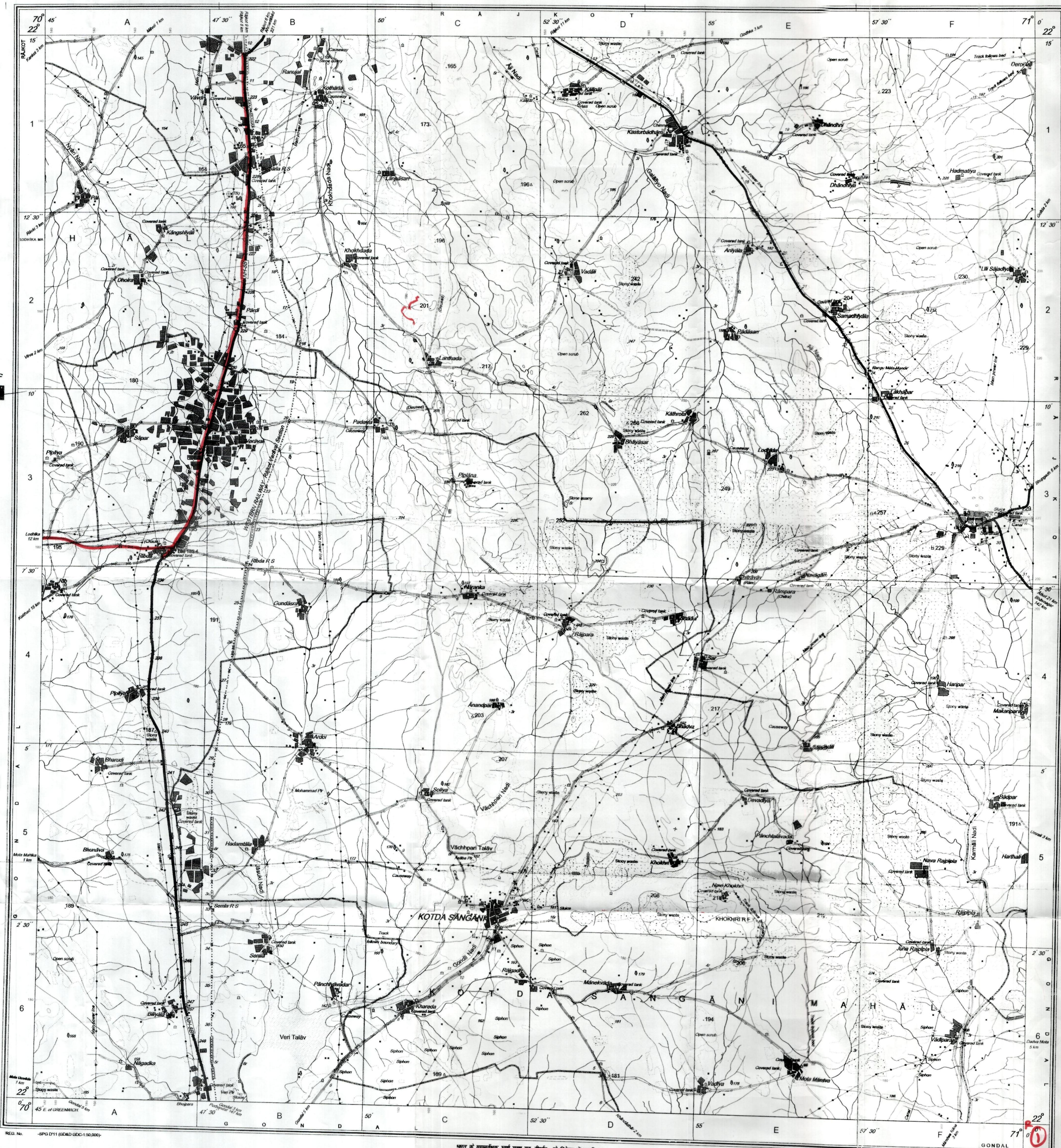
For further details about this map, please contact
Director
Gujarat, Damam & Diu Geo-Spatial Data Centre
Survey of India, Sector 10(A)
Gandhinagar.

WEBSITE - www.surveyofindia.gov.in

Reproduction in whole or part by any means is prohibited
without the written permission of Survey of India, the
National Mapping Agency.

© GOVERNMENT OF INDIA COPYRIGHT, 2011.

सर्वेक्षण एवं भू-स्थानिक डेटा केंद्र
गुजरात, दमम & दीव भू-स्थानिक डेटा केंद्र
सर्वेक्षण के भारत, सेक्टर 10(A)
गान्धिनगर



REG. No. -SPG D11 (G.D.M.D. 1:50,000)

भारत के नक्शे बनाने वाले सर्वेक्षण विभाग, भारत सरकार के तहत।
Published under the direction of Swarna Subba Rao, B.E., Surveyor General of India,
Survey of India, Hattibarkala Estate, Post Box No.37, Dehra Dun-248001 (Uttarakhand)
Department of Science & Technology, Government of India.

Proposed ofc route

PRINTED AT THE SOUTHERN PRINTING GROUP OF SURVEY OF INDIA.

For IDEAS Cellular Limite

Authorised Signatories

Not to be reproduced in any manner
23/12/2014

No. F42K12

Scale 1:50,000

F42K7 (41J/7)	F42K11 (41J/11)	F42K15 (41J/15)
F42K8 (41J/8)	F42K12 (41J/12)	F42K16 (41J/16)
F42Q5 (41K/5)	F42Q9 (41K/9)	F42Q13 (41K/13)

भारत सर्वेक्षण विभाग SURVEY OF INDIA

Price: Rs. 77/-

CONVENTIONAL SYMBOLS

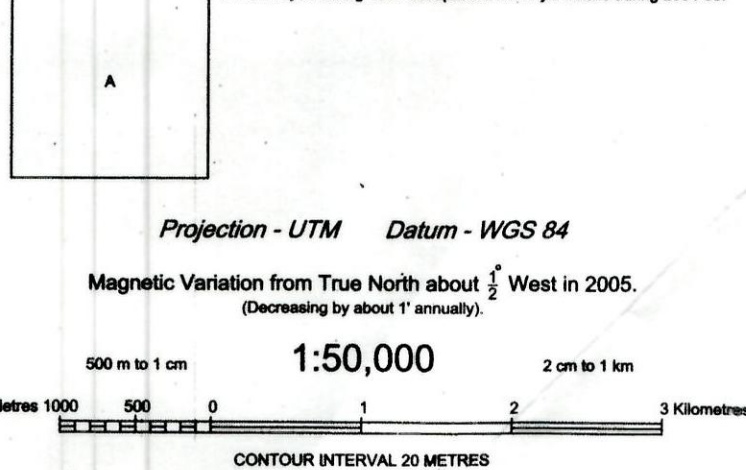
Express highway: with toll; with bridge; with distance stone	
Roads, metalled: according to importance	
Roads, double cartway: according to importance	
Unmetalled road: Cart-track; Pack-track with pass; Foot-path	
Streams: with track in bed; undefined; Canal	
Dams: masonry or rock-filled; earthenwork; Weir	
River: dry with water channel; with island & rocks; Tidal river	
Submerged rocks; Shoal; Swamp; Reeds	
Wells: lined; unlined; Tube-well; Spring; Tanks; perennial; dry	
Embankments: road or rail; tank; Broken ground	
Railways, broad gauge: double; single with station; under construction	
Railways, other gauges: double; single with distance stone; do.	
Mineral line or tramway: Kilm. Cutting with tunnel	
Contours with sub-features: Rocky slopes; Cliffs	
Sand features: (1) Wet. (2) Sand-hills (permanent); (3) Dunes (shifting)	
Towns or Villages: inhabited; deserted; Fort	
Huts: permanent; temporary; Tower; Antiquities	
Temple; Chhatra; Church; Mosque; Idgah; Tomb; Graves	
Lighthouse; Lightship; Buoys: lighted; unlighted; Anchorage	
Mine: Vine on trellis; Grass; Scrub	
Palms; palm trees; other: Plantain; Conifer; Bamboo; Other trees	
Areas: cultivated; wooded; Surveyed tree	
Boundary, international	
state: demarcated; undemarcated	
district: subdivided; tahsil or taluk; forest	
Boundary pillars: surveyed; unlocated	
Height, triangulated; station; point; approximate	
Bench-mark: geodetic; tertiary; canal	
Post office; Overhead tank	
Rest house or inspection bungalow; Circuit house; Police station	
Camping ground; Forest: reserved; protected	
Spaced names: administrative; locality or tribal	
Hospital; Dispensary; Veterinary; Hospital / Dispensary	
Aerodrome; Helped; Tourist site	
Power line: with pylons surveyed; with poles unsurveyed	

NOTES :-

Heights are in metres and above Indian mean sea level.
Contours are approximate.
A relative height, Δ , represents the approximate height, in metres, between the top and bottom of a steep slope.
Tanks, shown dry, in this area, usually contain water from July to November.
Unmetalled roads in this sheet are generally motorable in dry season.

COMPILATION INDEX

A. Surveyed during 1967-68. Updated for major details during 2004-05.

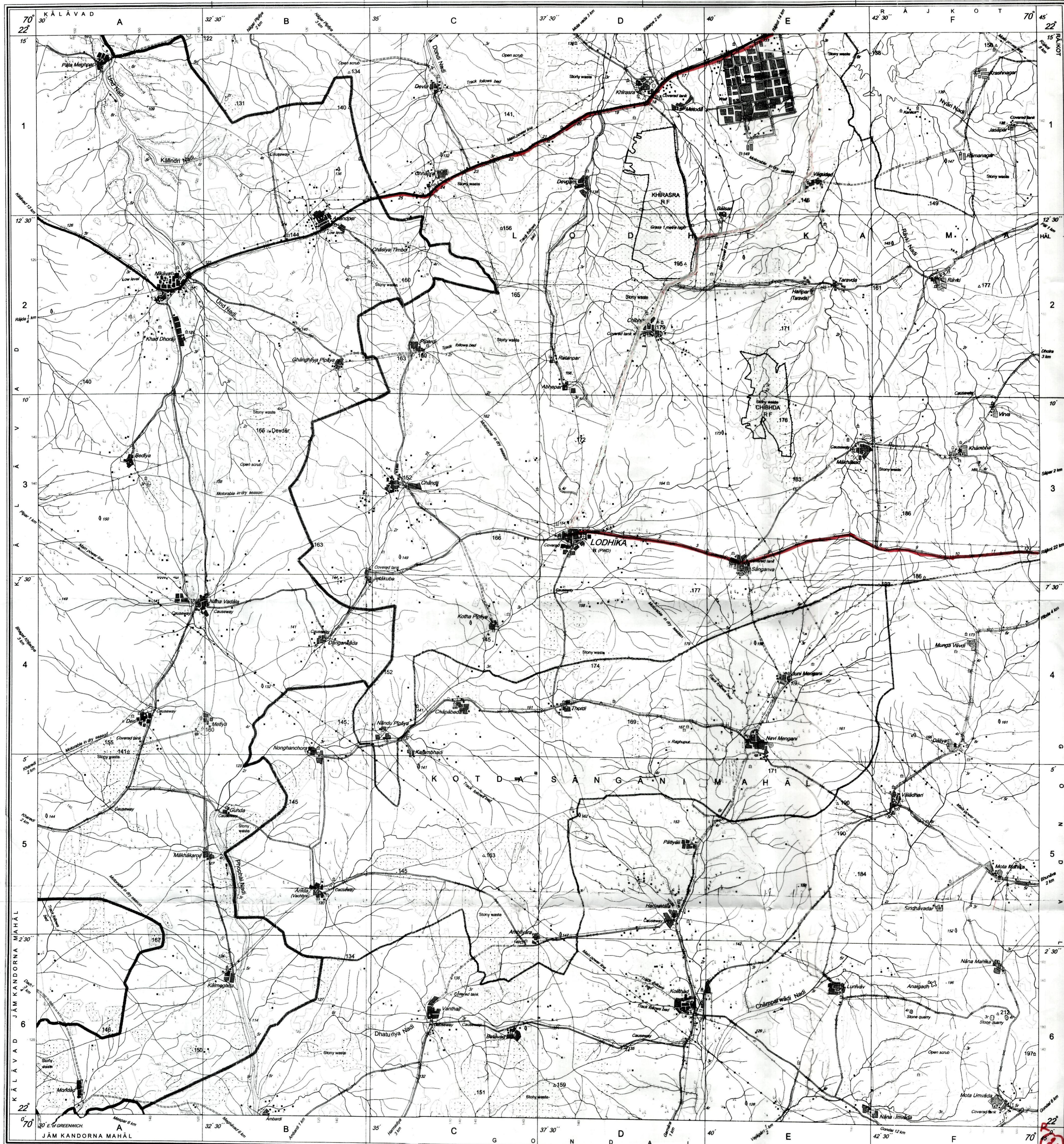


For further details about this map, please contact
Director
Gujarat, Damán & Diu Geo-Spatial Data Centre
Survey of India, Sector-10(A)
Gandhinagar.

WEBSITE - www.surveyofindia.gov.in

Reproduction in whole or part by any means is prohibited
without the written permission of Survey of India, the
National Mapping Agency.

GOVERNMENT OF INDIA COPYRIGHT, 2012.



REG No. 9253-SPD D/10 (Gujarat, Damán & Diu GDC-1:50,000)-1508 '12.

भारत के सर्वेक्षण विभाग: सर्वेक्षण विभाग, नई दिल्ली में प्रकाशित।
Published under the direction of Dr. Swarna Subba Rao, Surveyor General of India.
Survey of India, Hattibarkala Estate, Post Box No. 37, Dehra Dun - 248001 (Uttarakhand),
Department of Science & Technology, Government of India.

PRINTED AT THE SURVEY OF INDIA PRINTING PRESS, SURVEY OF INDIA.

Authorised Signat

No. F42K11

Scale 1:50,000

F42K6 (41J/6)	F42K10 (41J/10)	F42K14 (41J/14)
F42K7 (41J/7)	F42K11 (41J/11)	F42K15 (41J/15) Rajkot GUJARAT
F42K8 (41J/8)	F42K12 (41J/12)	F42K16 (41J/16)

1 Surendranagar GUJARAT
2 Jammagar GUJARAT
3 Rajkot GUJARAT

1st edition 2011. (67X6) 0-072

CONVENTIONAL SYMBOLS

Express highway with toll with distance stone		20
Roads, metalled according to importance		
Roads, double cartageway according to importance		
Unmetalled road, Cart-track, Pack-track with pass, Foot-path		
Streams, with track in bed, undrained, Canal		
Dams, masonry or rock-filled, earthwork, Weir		
River dry with water channel, with island & rocks, Tidal river		
Submerged rocks, Shoal, Swamp, Reeds		
Wells, lined, unlined, Tube-well, Spring, Tanks, perennial, dry		
Embankments road or rail, tank, Broken ground		
Railways, broad gauge, double, single with station, under constn.		
Railways, other gauges, double, single with distance stone, do.		
Mineral line or tramway, Kila, Cutting with tunnel		
Contours with sub-features, Rocky slopes, Cliffs		
Sand features (Tidal, (Shallow) permanent), (Shifting) shifting)		
Towns or Villages, inhabited, deserted, Fort		
Huts, permanent, temporary, Tower, Antiquities		
Temple, Chhatra, Church, Mosque, Idgan, Tomb, Graves		
Lighthouse, Lightship, Buoy, lighted, unlighted, Anchorage		
Mine, Vine on trellis, Grass, Scrub		
Palms, palmyra, other, Plantain, Conifer, Bamboo, Other trees		
Areas cultivated, wooded, Surveyed tree		
Boundary international		
State demarcated, undemarcated		
District, sub-division, tahsil or taluk, forest		
Boundary pillars, surveyed, unlocated		
Heights, triangulated, station, point, approximate		200, 200, 200
Benchmark, geodetic, tertiary, canal		BM 63-3, BM 63-3
Post office, Overhead tank		
Rest house or inspection bungalow, Circuit house, Police station		RF, PF
Camping ground, Forest, reserved, protected		KIKRI, NAGA
Spaced names, administrative, locality or tribal		
Hospital, Dispensary, Veterinary Hospital / Dispensary		
Aerodrome, Helped, Tourist site		
Power line, with pylons surveyed, with poles unsurveyed		

NOTES :-

Heights and Contours have not been shown.
A relative height, e.g. & represents the approximate height, in metres, between the top and bottom of the stream.
Lm. Cultivation are variable and dependent on rainfall.

COMPILATION INDEX

A Compiled from 1:25,000 Survey, 1990-94. Updated for major details during 2004-05.

Projection - UTM Datum - WGS 84

Magnetic Variation from True North about 1° West in 2005.
(Decreasing by about 1° annually).

1:50,000

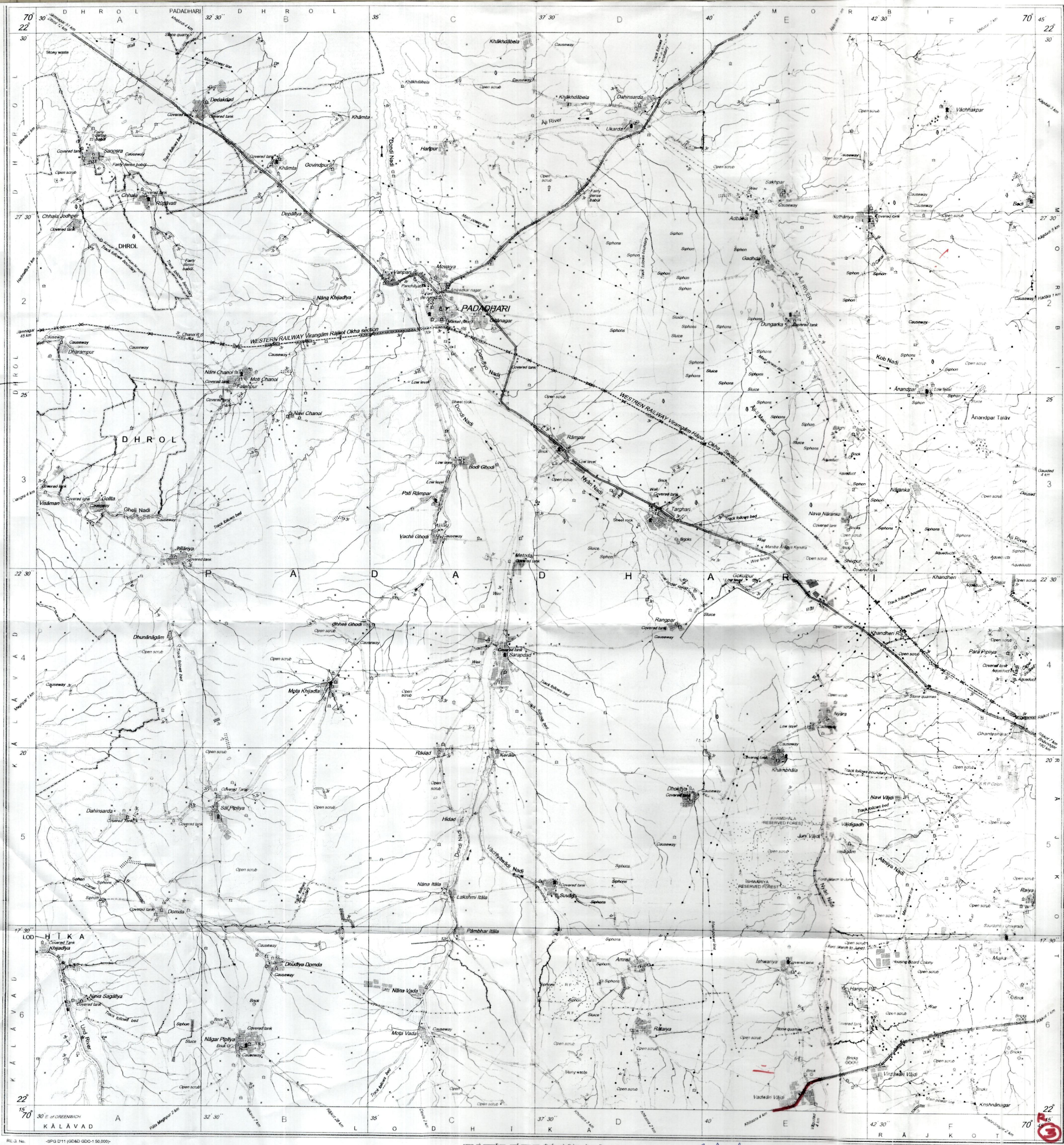
500 m to 1 cm
2 cm to 1 km
Metres 1000 500 0 1 2 3 Kilometres

For further details about this map, please contact
Director
Gujarat, Damán & Diu Geo-Spatial Data Centre
Survey of India, Sector-10(A)
Gandhinagar.

WEBSITE - www.surveyofindia.gov.in

Reproduction in whole or part by any means is prohibited
without the written permission of Survey of India, the
National Mapping Agency.

GOVERNMENT OF INDIA COPYRIGHT 2011



RG 3, No. -SPG D11 (GSD 1:50,000)

भारत के महासर्वकार, नवी सुभा राव, बी००, के निर्देशन में प्रकाशित
Published under the direction of Swarna Subba Rao, B.E., Surveyor General of India
Survey of India, Hattibankala Estate, Post Box No 37, Dehra Dun-248001 (Uttarakhand)
Department of Science & Technology, Government of India.

Proposed or route

PRINTED AT THE SOUTHERN PRINTING GROUP OF SURVEY OF INDIA

For IDEA Cellular Limited

Authorized Signatory

Not to be reproduced in any manner 23/12