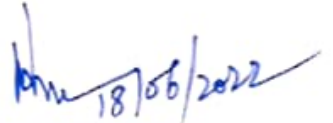


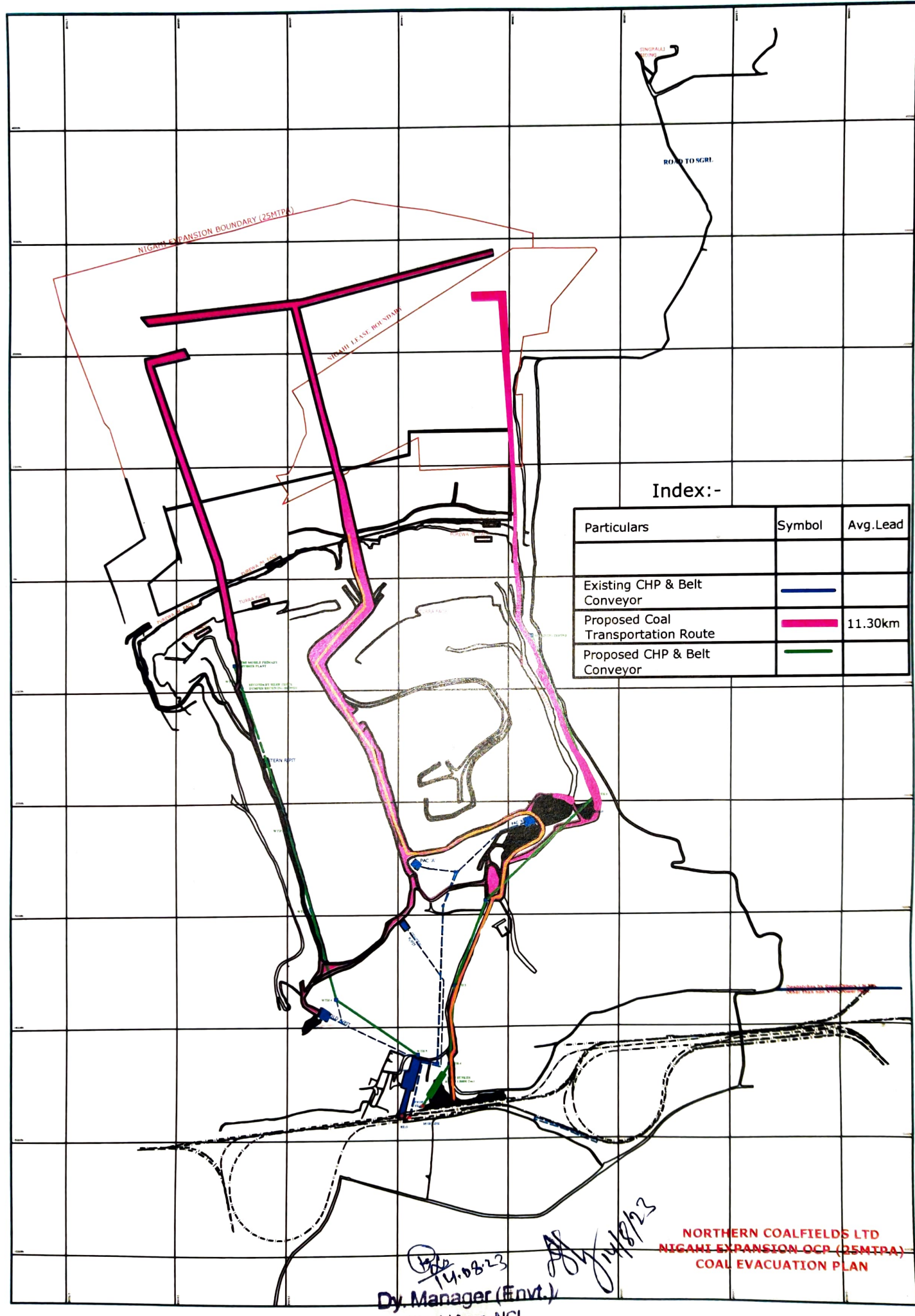
### **Details of Coal Transportation from mine to the Power Plants:**

Nigahi Expansion OCP have a linkage with Vindyanchal Super Thermal Power Plant (VSTPP) of NTPC. It will also serve as a basket linkage to meet overall demand of coal on NCL.

Coal from the mine will be transported through Dumpers and will be unloaded in the Coal Handling Plants(CHP). There will be 4 nos. of CHPs (Phase-I, Phase-II Phase-III & Phase-VI) with the capacity of 4.2 MTPA, 5 MTPA ,5.8 MTPA & 10MTPA respectively for dispatching coal of 25 MT peak capacity. Phase-I, Phase -II & Phase-III of the CHPs are already in operation. **Total coal will be transported through rail in eco-friendly manner.**



(Harish Duhan)  
Area General Manager  
Nigahi Area



Index:-

Particulars	Symbol	Avg. Lead
Existing CHP & Belt Conveyor		
Proposed Coal Transportation Route		11.30km
Proposed CHP & Belt Conveyor		

14.08.23  
Dy. Manager (Envt.)  
Nigahi Area, NCL

NORTHERN COALFIELDS LTD  
NIGAHI EXPANSION OCP (25MTPA)  
COAL EVACUATION PLAN