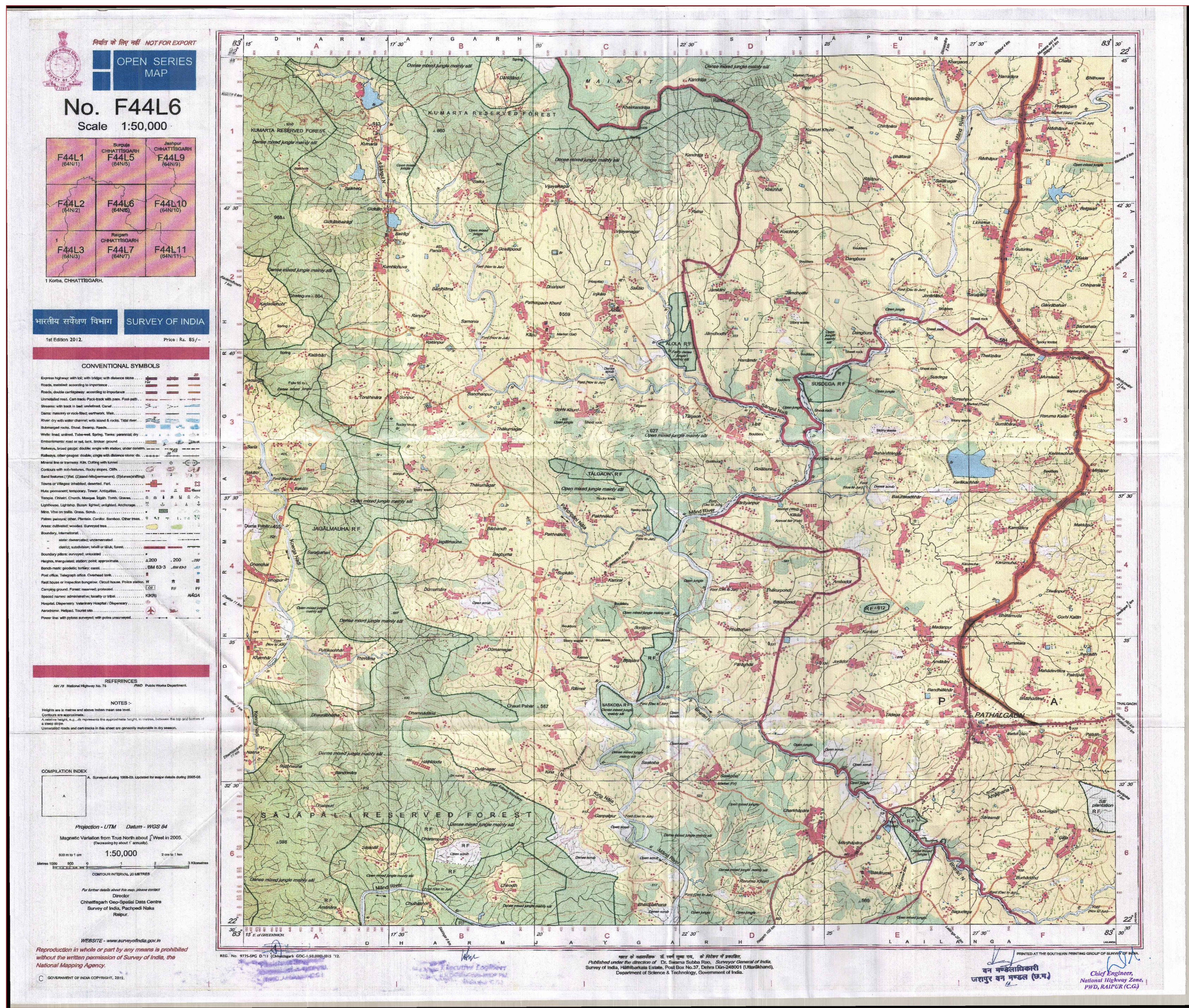


TOPOSHEET (1:50,000) : JASPUR FOREST DIVISION



DGPS COORDINATES		
POINT NAME	LATITUDE(dd.mm.ss)	LONGITUDE(dd.mm.ss)
AP1	23,8,54.136	83,7,30.828
AP2	23,8,53.512	83,7,32.349
AP3	23,6,44.521	83,7,52.205
AP4	23,5,26.625	83,10,3.492
AP5	23,6,4.215	83,13,23.805
AP6	23,5,37.718	83,15,30.662
AP7	23,4,16.894	83,17,55.583
AP8	23,2,58.901	83,20,16.995
AP9	23,1,26.976	83,22,39.36
AP10	22,59,12.245	83,24,7.243
AP11	22,57,28.83	83,25,36.765
AP12	22,54,32.307	83,26,56.509
AP13	22,51,59.529	83,27,52.523
AP14	22,49,40.016	83,29,3.332
AP15	22,47,6.237	83,29,24.475
AP16	22,44,38.295	83,28,42.425
AP17	22,42,1.248	83,28,11.47
AP18	22,39,56.151	83,29,13.64
AP19	22,37,42.654	83,29,29.961
AP20	22,35,33.765	83,28,7.195
AP21	22,33,45.656	83,28,4.653
AP22	22,33,29.039	83,28,38.181
AP22A	22,33,28.174	83,28,41.355

LEGENDS			
	NH- 78 Ambikapur to Pathalgaon		FOREST MARKATION
	DGPS POINTS		