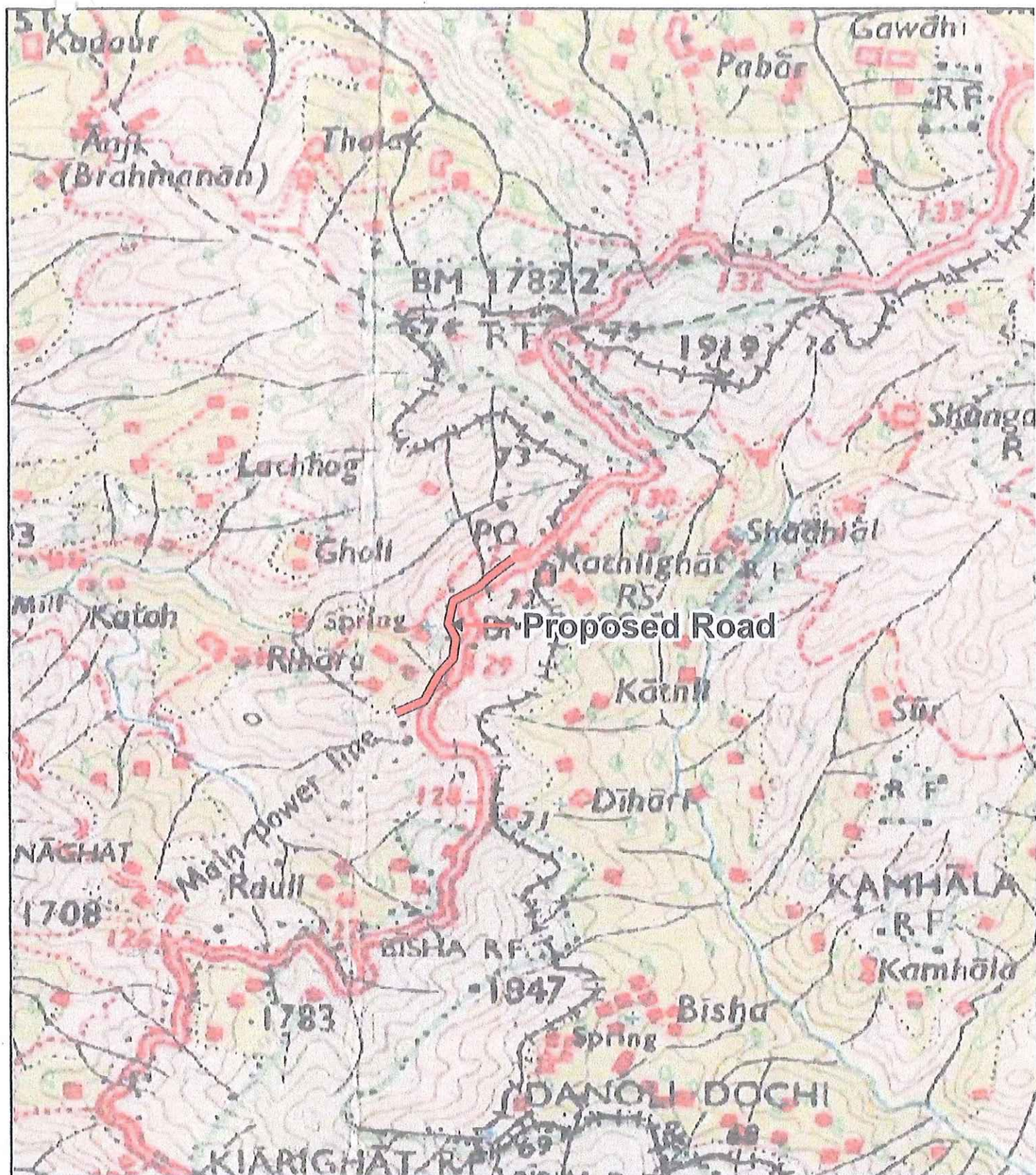


Topo Sheet:- Proposal for Diversion of forest land measuring 2.4589 ha. in Village Kathali from R/D 127/450 to 128/250 for four laning of Solan-Kailighat section of NH-22 (Now NH-05)



Index

Proposed Road



es

Divisional Forest Officer
Shimla Forest Division
SHIMLA

Scale 1:50000

Topo Sheet No.53E/

S.K. Sharma
GM-cum-Project Director
NHAI, PIU-Shimla