

Toposheet Map Of Map of Proposed CA Land in Gopalpur Compartment - 4 Plot No. 2, Puranpur Range, Pilibhit Division, Area = 1650 Square Meter Against Proposed Land For Approach Road For IOCL Petrol Pump in Village Charkhola, Tehsil Bilaspur, Pilibhit, Uttar Pradesh



No. H44U3  
Scale 1:50,000

H44T14 (53P/14)	H44U2 (52D/2)	H44U6 (52D/6)
H44T15 (53P/15)	<b>H44U3 (52D/3)</b> Pilibhit UTTAR PRADESH	H44U7 (52D/7)
H44T16 (53P/16)	H44U4 (52D/4)	H44U8 (52D/8)

भारतीय सर्वेक्षण विभाग  
SURVEY OF INDIA  
1st Edition 2011. Price : Rs. 77/-

CONVENTIONAL SYMBOLS

Express highway with 4+1, with bridge, with distance slope	
Roads, metalled, according to importance	
Roads, double carriageway, according to importance	
Unmetalled road, Cart-track, Pack-track with pass, Foot-path	
Streams, with back in black, underlined, Canal	
Dam, masonry or rock fill, earthwork, Weir	
Flow, dry with water channel, with island & rocks, Tidal river	
Submerged rocks, Shoal, Swamp, Roads	
Well, hand, unwell, Tidal well, Spring, Tanka, permanent, dry	
Isobathometric road or rail, bank, broken ground	
Railways, broad gauge, double, single with distance slope, do	
Railways, other gauges, double, single with distance slope, do	
Maximal line or tramway, Kdn. Cutting with tunnel	
Contours with sub-contours, Rocky slopes, Cliffs	
Sand features (1) (2) (3) (4) (5) (6) (7) (8) (9) (10) (11) (12) (13) (14) (15) (16) (17) (18) (19) (20) (21) (22) (23) (24) (25) (26) (27) (28) (29) (30) (31) (32) (33) (34) (35) (36) (37) (38) (39) (40) (41) (42) (43) (44) (45) (46) (47) (48) (49) (50) (51) (52) (53) (54) (55) (56) (57) (58) (59) (60) (61) (62) (63) (64) (65) (66) (67) (68) (69) (70) (71) (72) (73) (74) (75) (76) (77) (78) (79) (80) (81) (82) (83) (84) (85) (86) (87) (88) (89) (90) (91) (92) (93) (94) (95) (96) (97) (98) (99) (100)	
Towns or Villages, inhabited, deserted, Fort	
Hills, permanent, temporary, Tanka, Tanka, permanent, dry	
Temples, Chhatris, Church, Mosque, Eggh, Tomb, Graves	
Lighthouse, Lightship, buoy, lighted, unlighted, Anchorage	
Mine, Viro on tolls, Grass, Scrub	
Palms, palms, other, Plantain, Conifer, Bamboo, Other trees	
Areas, cultivated, wooded, Surveyed area	
Boundary, international	
State, demarcated, undemarcated	
district, sub-division, block or taluk, forest	
Boundary pillars, surveyed, uncoloured	
Heights, triangulated station, point, approximate	
Band-mark, geodetic, tertiary, canal	
Post-office, Telegraph office, Cesshead tank	
Rail house or inspection bungalow, Circuit house, Police station	
Camping ground, Forest, reserved, protected	
Special names, administrative, locality or tribal	
Hospital, Dispensary, Veterinary, Hospital, Dispensary	
Aerodrome, heliport, Tropic, etc.	
Power line, with pylons surveyed, with poles unsurveyed	

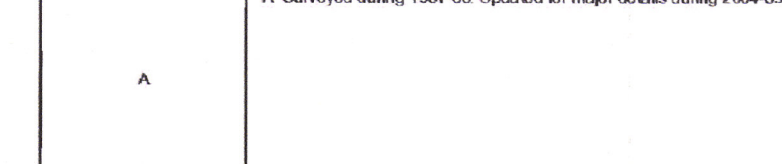
Legend

Proposed CA Land

NOTES :-

Heights and contours have not been shown.  
A relative height, e.g., 20, represents the approximate height, in metres, between the top and bottom of a slope.  
The kilometre scale numbers along road, railway and canal are shown in slant type, e.g., 1/2, 3/4, 5/6, 7/8, 9/10, 11/12, 13/14, 15/16, 17/18, 19/20, 21/22, 23/24, 25/26, 27/28, 29/30, 31/32, 33/34, 35/36, 37/38, 39/40, 41/42, 43/44, 45/46, 47/48, 49/50, 51/52, 53/54, 55/56, 57/58, 59/60, 61/62, 63/64, 65/66, 67/68, 69/70, 71/72, 73/74, 75/76, 77/78, 79/80, 81/82, 83/84, 85/86, 87/88, 89/90, 91/92, 93/94, 95/96, 97/98, 99/100.  
A relative height, e.g., 20, measured along a canal, indicates the height of the top of the canal embankment above the adjacent country.  
Tanks, shown dry, in this area, usually contain water from July to December.  
Tide marks are numerous throughout the sheet, only the important ones have been shown.  
All metalled roads and cart-tracks are metalled in dry season. Permission to use unmetalled roads and cart-tracks along canal is required from irrigation authorities.

COMPILATION INDEX  
A Surveyed during 1967-68. Updated for major details during 2004-05.



Projection - UTM Datum - WGS 84

Magnetic Variation from True North about 1° East in 2005.  
(Increasing by about 1° annually)

1:50,000  
500 m to 1 cm  
2 cm to 1 km  
0 500 1 2 Kilometres

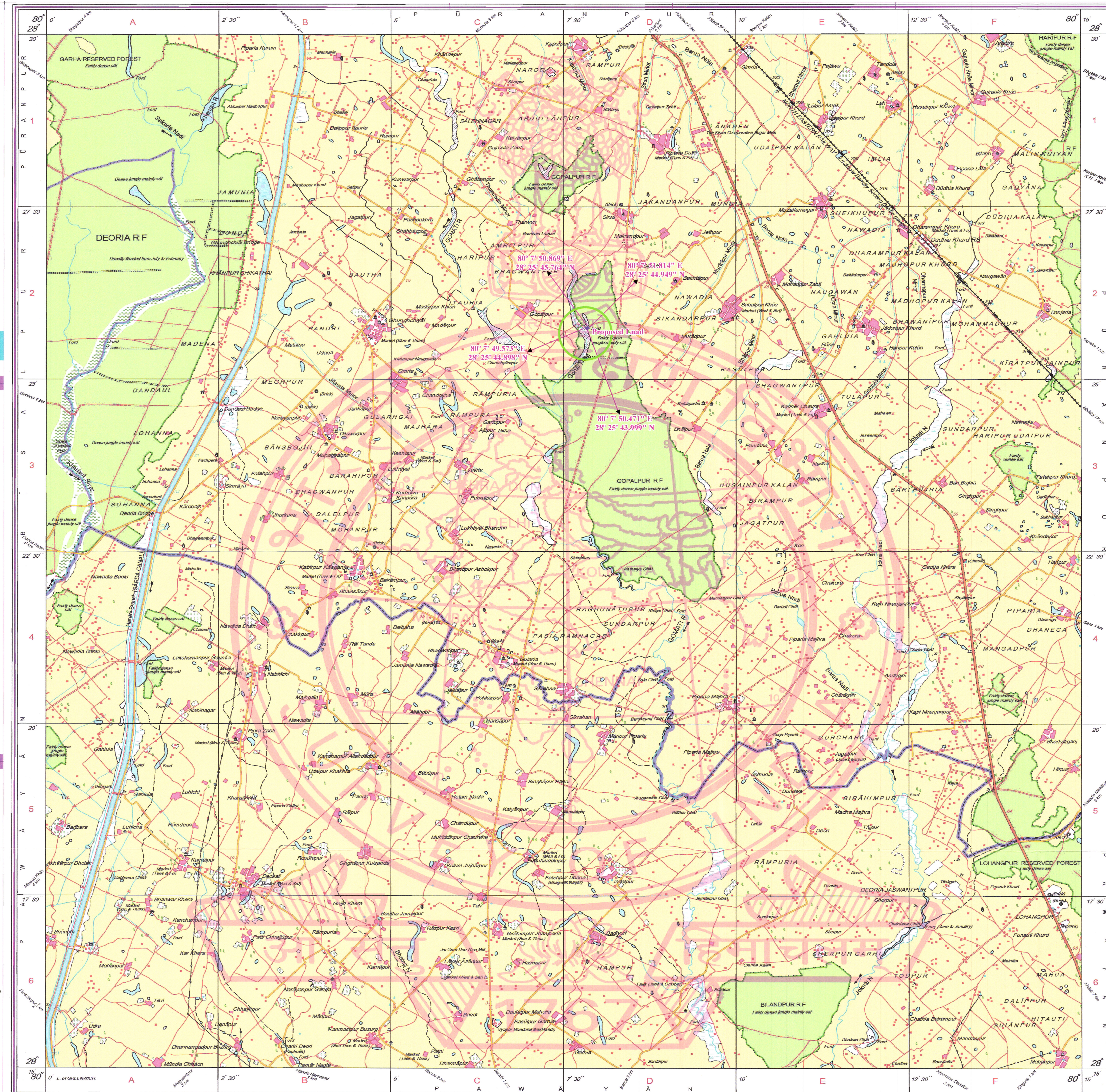
For further details about this map, please contact

Director  
Uttarakhand & West Uttar Pradesh Geo-Spatial Data Centre  
Survey of India, 17 E.C. Road, Karanpur  
Dehra Dun.

WEBSITE - www.surveyofindia.gov.in

Reproduction in whole or part by any means is prohibited  
without the written permission of Survey of India, the  
National Mapping Agency.

GOVERNMENT OF INDIA COPYRIGHT 2011.



श्रीन कृष्ण धवन / Shree Krishna Dhawan  
कार्य प्रभु (रिटल सेल्स) / Sr. Manager (Retail Sales)  
भारतीय ऑयल कॉर्पोरेशन लि. (एच.डी.)  
Indian Oil Corporation Limited (M.D.)  
35-ए, कनका नहर मार्ग (35-A, Kankana Nehru Marg)  
बल्लरी-243001 (उ.प्र.) / Ballari-243001 (U.P.)

प्रमाणित निदेशक  
साधारण भाग, पीलीभीत