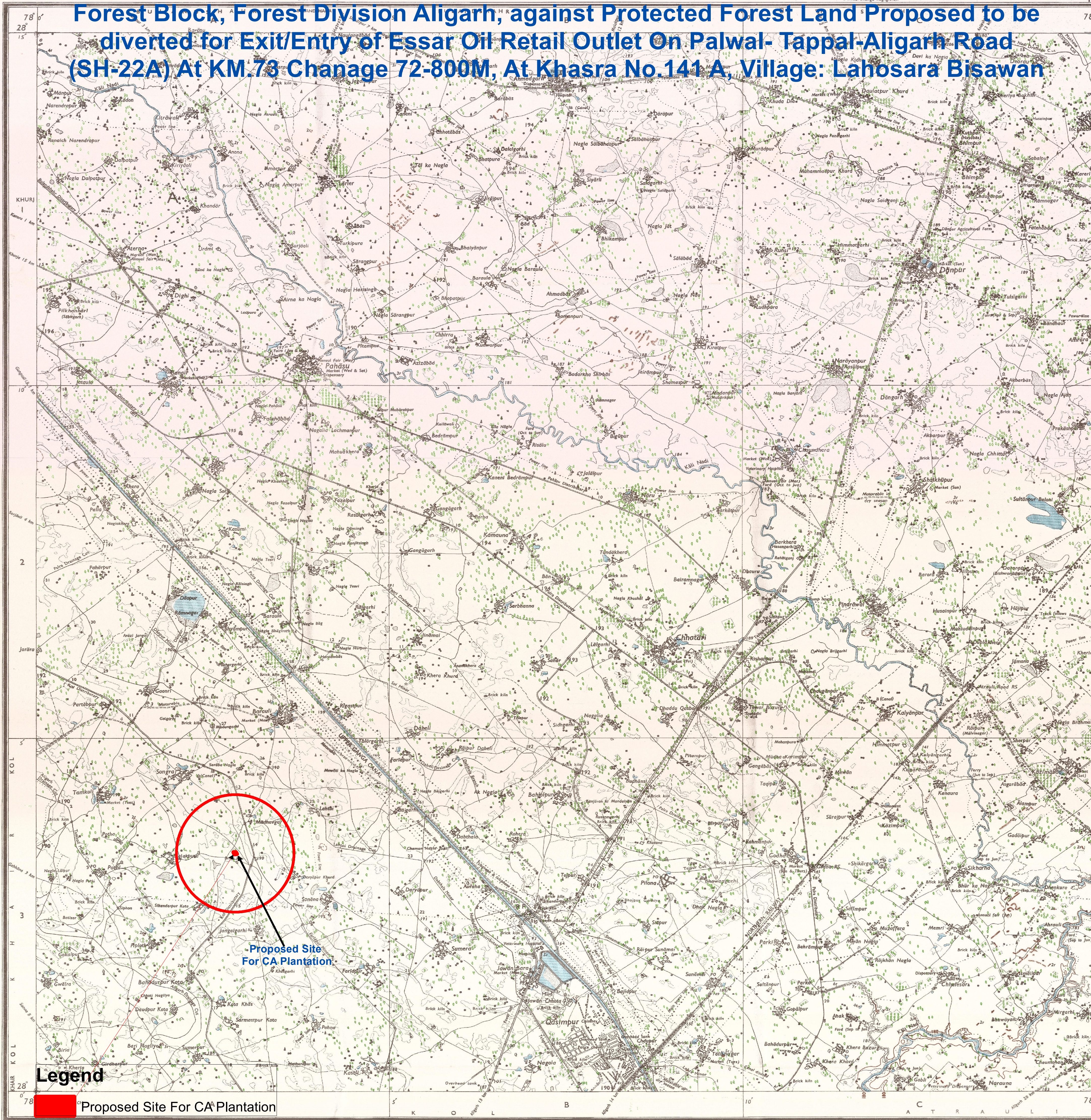


Forest Block, Forest Division Aligarh, against Protected Forest Land Proposed to be diverted for Exit/Entry of Essar Oil Retail Outlet On Palwal- Tappal-Aligarh Road (SH-22A) At KM.78 Change 72-800M, At Khasra No.141 A, Village: Lahosara Bisawan



Legend

Proposed Site For CA Plantation

REG.No 3867 NPG D71 (N.C.1-1:50,000-380678-380681-300682-641095. Reprint 306107)

Roads, metalled: according to importance: distance stone	20
unmetalled: do.	da
Cart track, Pack-track and pass, Foot-path with bridge	
Bridges: with pier, without, Causeway, Ford or Ferry	
Streams: with track in bed, undefined, Canal	
Dams: masonry or rock-filled; earthwork, Weir	
River banks: shelving, steep, 3 to 6 metres; over 6 metres	
dry with water channel, with island & rocks, tidal river	
Submerged rocks, Shoal, Swamp, Reeds	
Wells: lined, unlined, Tubo-well, Spring, Tanks: perennial, dry	
Embankments: road or rail; tank, Broken ground	
Railways: broad gauge, double single with station, under construction	
other gauges: do. do. with distance stone, do.	
Mineral line or tramway, Telegraph line, Cutting with tunnel	
Contours with sub-features, Rocky slopes, Cliffs	
Sand features: (flats, dunes, hills and dunes, sandpits, shifting dunes)	

1st Edition 1976.
(Previous Edition on 1-inch scale: 1st 1912).

REFER TO THIS MAP AS - 1:50,000
SHEET 53 L/4 FIRST EDITION

INDIA

Index to Sheets

53 L/5	53 L/3	53 L/7
53 L/6	53 L/2	53 L/8
53 L/4	53 L/1	53 L/9

Published under the direction of Major-General K.L. Khosla, B.Sc., B.E. (Civil), F.I.S., F.I.E., F.I.G.U., M.A.S.C.E. (U.S.A.), Surveyor-General of India, 1976.

500 m to 1 cm
Metres 1000 500 0 1 2 3 4 5 6 Kilometres
1:50,000
2 cm to 1 km

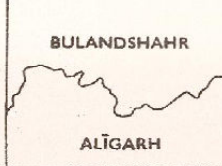
HEIGHTS & CONTOURS IN METRES
CONTOUR INTERVAL 20 METRES

*Water features are shown in blue where they generally contain water.
*Cultivated areas are coloured yellow.
The exterior boundaries of areas of Reserved or Protected Forests are shown by green ribands.
*Not applicable.

The kilometre stone numbers along the railway and roads are shown in stat. type, e.g., '5' whereas milestone numbers are shown in upright type, e.g., '5'.

Tanks shown dry in this area, usually contain water from July to March.
Cart tracks in this area are generally reusable in dry season.
Wells are numerous throughout the sheet, only the important ones have been shown.
Some roads in this sheet have been incorporated as a result of the verification survey carried out during 1975-76.
Permission to use roads and cart-tracks along canals is required from the irrigation authorities.
This sheet has been compiled from 1:25,000 survey.

Administrative Index



PRINTED AT THE NORTHERN PRINTING GROUP OF SUR

Towns or Villages: inhabited, deserted, Fort, Antiquities	
Huts: permanent, temporary, Tower, Antiquities	
Temples, Churches, Mosques, Idgah, Tomb, Graves	
Lighthouse, Lightship, Buoy, Lighted, Unlighted, Anchorage	
Mine, Vine on trellis, Grass, Scrub	
Palms: palmyra; other, Plantain, Conifer, Bamboo, Other trees	
Boundary: international	
state: demarcated, undemarcated	
district: subdivided, taluk or taluk, forest	
Boundary pillars: surveyed, unlocated, village junction	
Heights, triangulated: station, point, approximate	
Bench mark: geodetic, secondary, canal	
Post office, Telegraph office, Combined office, Police station, P.O.	
Bungalows, dki or travellers, inspection, Rest-house, Other	
Circuit house, Camping ground, Forest: reserved, protected, CH	
Spaced names: administrative, locality or tribal	

GOVERNMENT OF INDIA COPYRIGHT, 1976.
Price: Twenty nine Rupees.