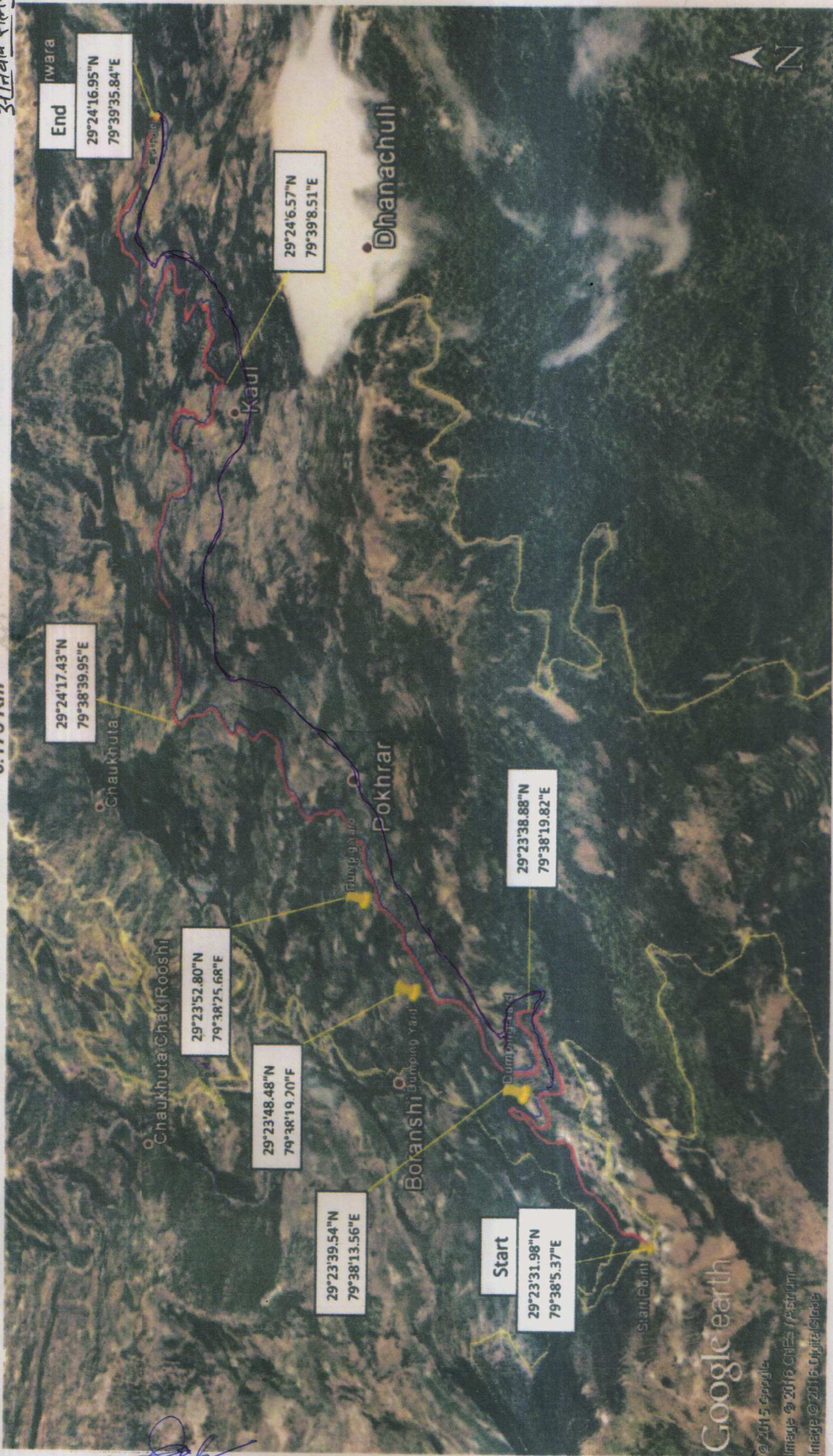


डाउनलोड मानचित्र जनपद ननीताल में विधान सभा क्षेत्र भामताल के कांसयलेख परवड़ा माटर माग का धारा ब्लाक मुख्यालय से कौल हात हुए धानाचूली तक विस्तार
 डूनिवाले सेलम 1.4

6.175 Km



Legend

- Dumping Yard
- Proposed Road
- Alternate Alignment

अधिसारी अभियन्ता
 बस्थई खण्ड, लो० नि० वि०
 ननीताल (ननीताल)

सहायक अभियन्ता
 बस्थई खण्ड, लो० नि० वि०
 ननीताल (ननीताल)

उप प्रभागीय वनाधिकारी (म०)
 ननीताल वन प्रभाग, ननीताल

वन विभाग
 पहाडपानी डाउन

वन विभाग

प्रभागीय वनाधिकारी
 ननीताल वन प्रभाग, ननीताल

23

Petforma for comparison between identified aligments

Sl. No.	Variables	Alignment No-1	Alignment No-2
1	Topography	Start from Km 39 of SH 10 passes through nap /forest land	-----do-----
2	Length of Road	6.715	6-500
3	Bridging reuirement No. and Length	NIL	NIL
4	Geometric		
	(a) Gradients	1:24 R, 1:40 R, 1:17 R, 1:24 F LEVEL	1:24 R, 1:40 R, 1:17 R, 1:24 R, 1:40 F, LEVEL
	(b) Curves, H.P. Bends	2 Nos H.P. Bend 120 No. Curves	4 Nos H.P. Bend 300 No. Curves
5	Existing Means of communication, mule path, jeep, Tracks etc.	Mule Path	Mule Path
6	Right of way, bringing out. Construction on account of built up ares, monuments and other structures.	7.00 m	7.00 m
7	(a) Terrain & Soil Condition	E& B, H.S, VHS	E& B, H.S, VHS
	(Vi) Cliffs and gotges (Vii) Drainage characteristic of the area including sceptibility to hooding (Viii) General elevation of the road including maximum and minimum being negotiated by main ascends and discends. (iX) Variation extants and types.	(VI) Nil (VII) Flooding suspect ability Nil. (VIII) Rise, Fall and Level Gradients. (IX) Rise, Fall and level gradient	(VI) NIL (VII) Nil (VIII) Rise, Fall and level gradiar (IX) Rise, fall and Level gradient
8	Climate Condition (a) Temperature Monthly max. & Min reading (b) Rainfall data average annual peak intensities monthly distribution(to the extent avalible) (c) Snowfall data average annual peak intensities monthly distribution(to the extent available) (d) Wind direction and velocities. (e) Fog condition.(f) Exposure to sun.(g) Unusual welth condition like cloud burst etc.	a. Temperatune 0.30 C b. Nil c. Nil d. North to South e. During rainy season f. 95% g. Nil	a. 0.30 c b. Nil c. Nil d. North to south e. During rainy seacon f. 85 % g. Nil
9	Facilities resources. (a) Landing ground (b) Dropping Zone (c) Food stuffs. (d) Labour local availability and need for import. (e) Construction material (limber, Bamboo, Sand, Stone, Shingle etc. extent of their availability and lead involved.	a. To be aquired from village and forest b. Nil c. Available d. Available e. Available from Gola river	a. do b. Nil c. Available d. Availible e. do
10	Value of land, agricultural land, Irrigated land, bult up land, forest land etc.	Unirriated land will be effected	same
11	Approximate Const. Cost.	320.00 Lac.	337.00 Lac.
12	Access point indicting possibility of induction of equipment. 2 Yesrs after forest clearance	Dhari Km 39 of SH. 10	Dhari 39 Km of SH. 10

13	Period required for construct Nilion.	2 year after forest clearance	--Do--
14	Strategic Consideration.	Nil	Nil
15	Important villages, town and markets centers to be connected.	Dhari, Kasiyalekh, Dhanchuli	Dhari, Kasiyalekh.
16	Recreational potential.	Adventures sports and tourism will increase activity	--Do--
17	Ecnomic Factors. (a) Population served by the alignment.	2000	1500
	(b) Agricutures and economic potential of the area.	Market will be developed for local production	--Do--
18	Other major development project being taken pu electric projects etc.	Nil	Nil
19	(ii) Misc. Such as camping sites	Nil	Nil
	(iii) Law and other problem	Nil	Nil
	(iv) Royalty		
	(vi) Availablity of contracters for collection and carriage of construction material	Localy available	Localy available
	(v) Working period available for construction of work.	8 Month	8 Month
20	Total No. trees to be removed.	885	1640
21	Average Dendity of forest conver.	0.3	0.4
22	Total No. of Merits	Less construction cost etc.	Nil
23	Total No. of Demerits	2 H.P. bend	4 no H.P. bend muck construction cost

RECOMMENDATIONS:

Alignment no.(1) Recomendent for approval being more economical, useful & technically Feasible.

A. Assistant, Engineer/J.E.

सह. यंत्र. अभियंता
Assistant Engineer
बस्पाई खण्ड, लो. नि. वि.
भवाली (नैनीताल)

अभि. यंत्र. अभियंता
Executive Engineer
बस्पाई खण्ड, लो. नि. वि.
भवाली (नैनीताल)