

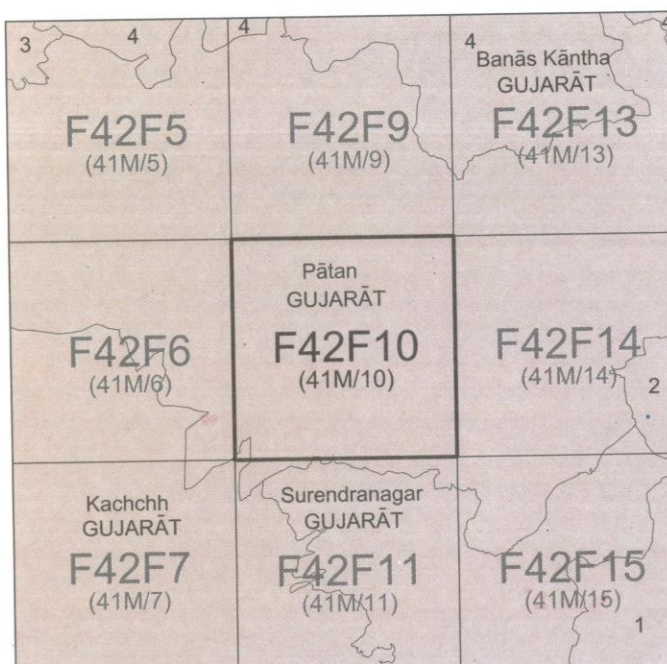


निर्यात के लिए नहीं NOT FOR EXPORT

OPEN SERIES
MAP

No. F42F10

Scale 1:50,000



1 Ahmadabad, GUJARAT.
2 Mahesana, GUJARAT.
3 Kachchh, GUJARAT.

भारतीय सर्वेक्षण विभाग

SURVEY OF INDIA

1st Edition 2010.

Price: Rs. 70/-

CONVENTIONAL SYMBOLS



Proposed OFC Line

NOTES :-

Heights and contours are in metres.
Contours are approximate.
A relative height, Δ , represents the approximate height, in metres, between the top and bottom of a steep slope.
Unmetalled roads in this sheet, against which there is no descriptive remark, are generally motorable in dry season.
Cart-tracks in this sheet are generally motorable (four-wheel drive) in dry season.
Tanks, shown dry in this area usually contain water from July to September.
The area of Kachchh District in this sheet is not included in any taluk.

COMPILATION INDEX

A. Surveyed during 1995-96, Updated for major details during 2005-06.



Projection - UTM Datum - WGS 84

Magnetic Variation from True North about $\frac{1}{4}^{\circ}$ West in 2005.
(Decreasing by about $1'$ annually.)

1:50,000

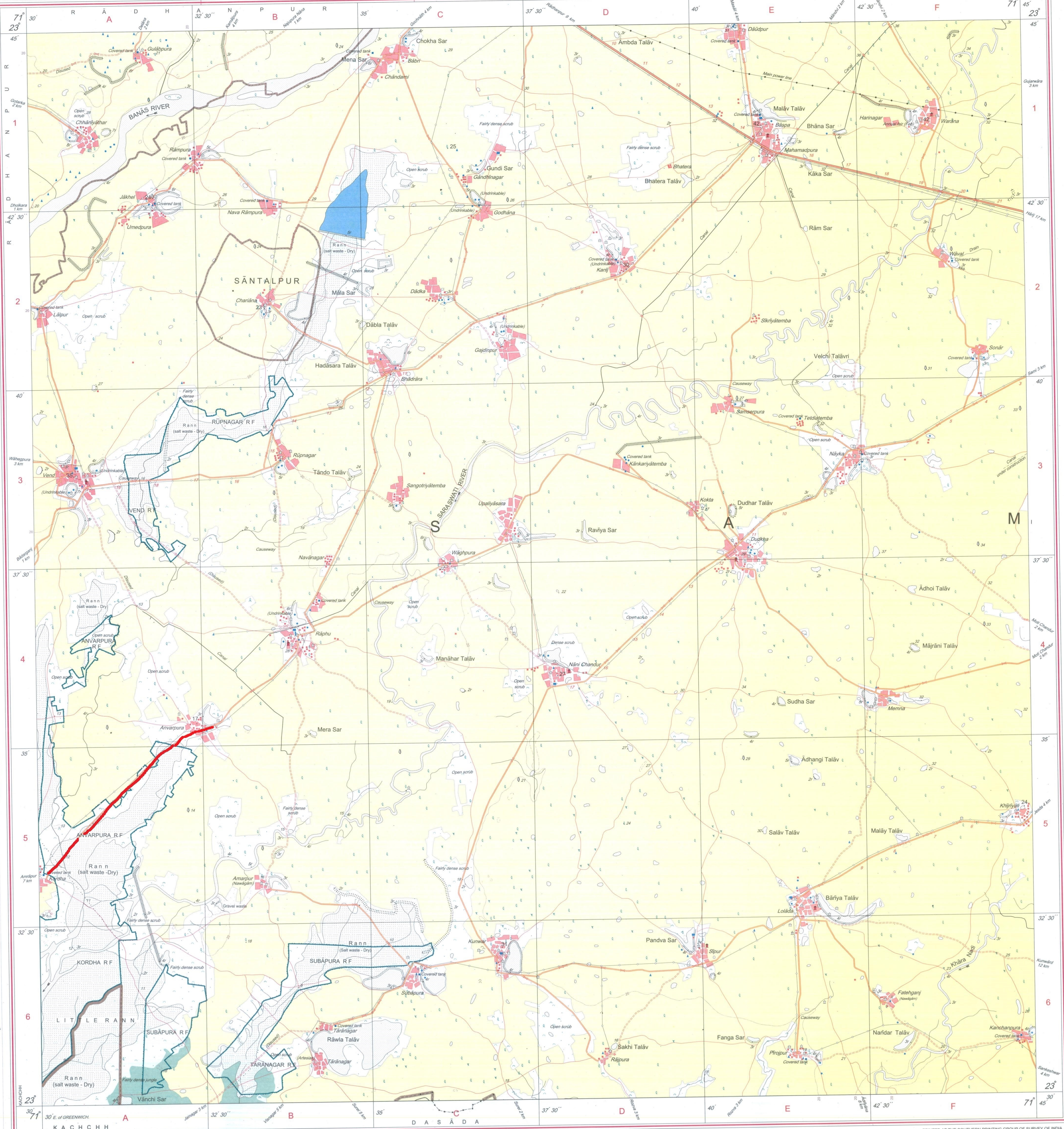


CONTOUR INTERVAL 20 METRES

For further details about this map, please contact
Director
Gujarat, Damani & Diu Geo-Spatial Data Centre
Survey of India, Sector-10 (A)
Gandhinagar.

WEBSITE - www.surveyofindia.gov.in

Reproduction in whole or part by any means is prohibited
without the written permission of Survey of India, the
National Mapping Agency.



REG. No. 9041-SPG D 10 (GD & D GDC-1:50,000)-1510.

भारत के मासर्वेक्षक, स्वर्ण सुब्बा राव, बी०ई०, के निदेशन में प्रकाशित,
Published under the direction of Swarna Subba Rao, B.E., Surveyor General of India.
Survey of India, Hattibarkala Estate, Post Box No.37, Dehra Dun-248001 (Uttarakhand),
Department of Science & Technology, Government of India.

PRINTED AT THE SOUTHERN PRINTING GROUP OF SURVEY OF INDIA.