
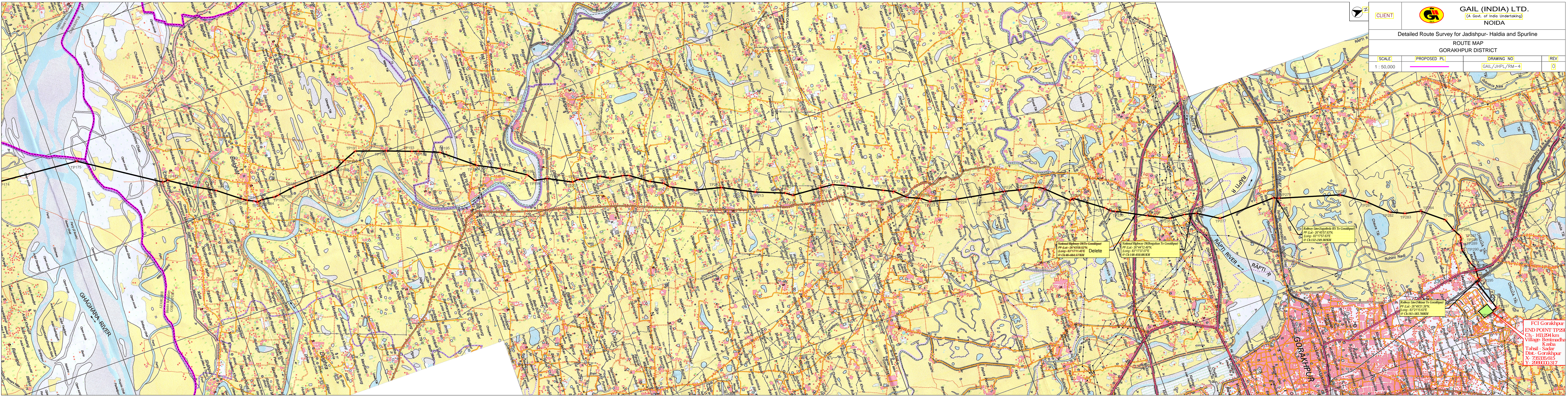


SCALE	PROPOSED PL	DRAWING NO	REV
1 : 50,000		GAIL/JHPL/RM-4	0



National Highway-28 To Gosakpur  
 PF (Lat: 26°42'57.53"N  
 Long: 83°17'14.45"E  
 @ Ch.146-664.577KM

National Highway-28(Boghan To Gosakpur)  
 PF (Lat: 26°44'12.67"N  
 Long: 83°17'31.07"E  
 @ Ch.146-630.881KM

Railway Line(Lalgohela RS To Gosakpur)  
 PF (Lat: 26°49'21.33"N  
 Long: 83°21'15.63"E  
 @ Ch.161-383.760KM

FCI Gorakhpur  
 END POINT TP298  
 Ch. 163.294 km  
 Village- Berimochha  
 Kasba  
 Tahsil- Sadar  
 Dist.- Gorakhpur  
 X- 733335 615  
 Y- 239300 317