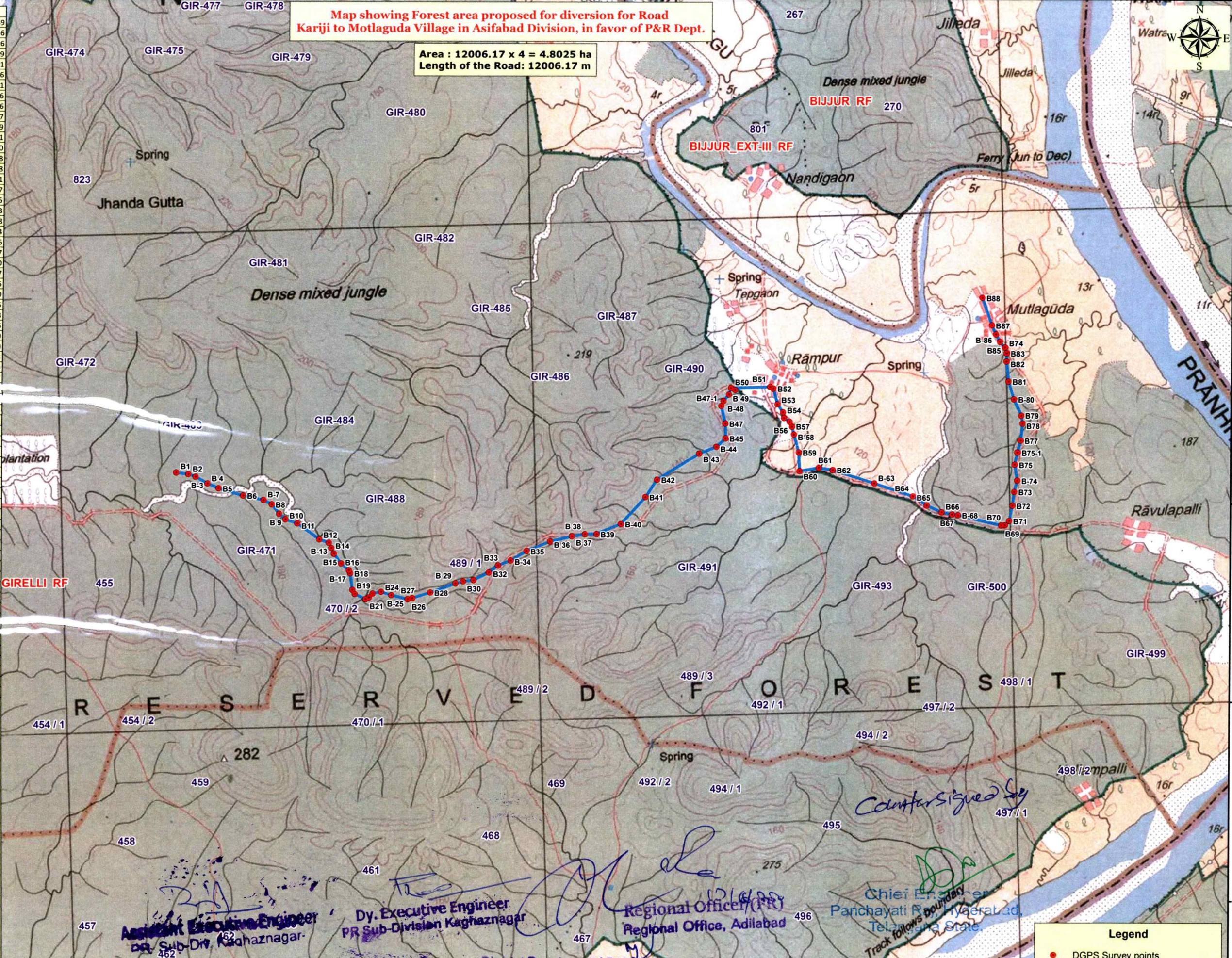


Map showing Forest area proposed for diversion for Road Kariji to Motlaguda Village in Asifabad Division, in favor of P&R Dept.

Area : 12006.17 x 4 = 4.8025 ha
Length of the Road: 12006.17 m

Name	Easting	Northing	Longitude	Latitude
B1	378415.071	2122066.691	79.84355241	19.18830649
B2	378525.444	2122047.817	79.84460326	19.18814256
B-3	378589.268	2122020.910	79.84521192	19.18790326
B-4	378695.903	2121954.003	79.84623023	19.18730509
B5	378796.629	2121906.125	79.84719113	19.18687851
B6	379020.714	2121832.580	79.84932679	19.18622736
B-7	379210.032	2121784.578	79.85113019	19.18580491
B8	379284.138	2121741.309	79.85183765	19.18541836
B-9	379351.997	2121651.838	79.85248857	19.18461396
B10	379408.864	2121599.615	79.85303263	19.18414547
B11	379519.040	2121557.025	79.85408305	19.18376719
B12	379717.374	2121401.216	79.85597888	19.18237111
B-13	379803.378	2121366.652	79.85679891	19.18206390
B14	379825.922	2121316.854	79.85701640	19.18161528
B15	379847.016	2121263.427	79.85722033	19.18113378
B16	379910.702	2121170.613	79.85783174	19.18029891
B-17	379980.326	2121104.347	79.85849796	19.17970427
B18	379991.209	2121076.485	79.85860319	19.17945315
B19	380006.166	2120921.687	79.85875506	19.17805533
B-20	380028.835	2120881.359	79.85897313	19.17769228
B21	380125.016	2120831.509	79.85989086	19.17724754
B22	380156.741	2120844.551	79.86019174	19.17736726
B-23	380192.274	2120881.672	79.86052733	19.17770477
B24	380270.115	2120895.168	79.86126672	19.17783130
B-25	380363.775	2120860.366	79.86215953	19.17752237
B26	380513.870	2120816.579	79.86358957	19.17713556
B27	380556.065	2120824.885	79.86399030	19.17721310
B28	380722.004	2120871.344	79.86556542	19.17764265
B-29	380958.064	2120949.037	79.86780542	19.17835853
B30	381028.777	2120966.101	79.86847682	19.17851686
B-31	381125.856	2120974.507	79.86939947	19.17859850
B32	381267.984	2121039.568	79.87074704	19.17919470
B33	381354.798	2121101.783	79.87156877	19.17976193
B-34	381400.000	2121144.664	79.87268827	19.18015629
B35	381725.937	2121250.000	79.87413952	19.18090667
B-36	381849.341	2121309.167	79.87500000	19.18120000
B-37	382053.309	2121350.306	79.87819614	19.18200000
B-38	382175.410	2121366.961	79.87935627	19.18220584
B39	382284.415	2121363.804	79.88039308	19.18218364
B-40	382510.651	2121450.546	79.88253924	19.18298054
B41	382743.452	2121693.238	79.88473837	19.18518691
B42	382857.048	2121850.077	79.88580914	19.18661065
B-43	383252.892	2122080.202	79.88959569	19.18871283
B-44	383412.229	2122137.228	79.89107156	19.18923727
B45	383499.468	2122213.289	79.89189662	19.18992956
B47	383500.211	2122350.631	79.89189539	19.19117059
B47-1	383468.428	2122514.799	79.89158319	19.19265216
B-48	383489.601	2122561.340	79.89178174	19.19307391
B-49	383541.375	2122619.990	79.89227059	19.19360684
B50	383562.947	2122681.530	79.89247203	19.19416413
B51	383926.253	2122678.124	79.89592745	19.19415419
B52	383956.345	2122663.925	79.89621450	19.19402762
B53	383988.182	2122513.935	79.89652632	19.19267416
B54	384000.177	2122438.352	79.89700634	19.19199406
B-55	384045.000	2122383.613	79.89708173	19.19149988
B56	384095.000	2122347.412	79.8975076	19.19117563
B57	384115.392	2122298.861	79.89774908	19.19073806
B-58	384131.374	2122228.084	79.89790532	19.19000000
B59	384170.127	2122061.246	79.89828391	19.18850000
B60	384172.863	2121886.468	79.89832000	19.18701503
B61	384353.409	2121909.631	79.90003605	19.18723464
B62	384481.989	2121885.891	79.90126029	19.18702745
B-63	384856.661	2121749.854	79.90483160	19.18581955
B64	385208.327	2121618.053	79.90818381	19.18464855
B65	385335.252	2121528.751	79.90939618	19.18384881
B66	385472.326	2121460.629	79.91070380	19.18324101
B67	385568.906	2121436.994	79.91162367	19.18303290
B-68	385625.044	2121429.162	79.91215801	19.18296529
B69	386026.307	2121320.994	79.91598038	19.18201048
B70	386059.239	2121322.104	79.91629349	19.18202236
B71	386099.850	2121361.718	79.91667736	19.18238258
B72	386132.522	2121501.165	79.91697983	19.18364445
B73	386153.201	2121628.392	79.91716898	19.18479521
B74	386109.006	2122973.029	79.91666919	19.19694270
B-74	386184.351	2121731.264	79.91745913	19.18572650
B75	386165.632	2121879.956	79.91727233	19.18706901
B75-1	386192.871	2121993.131	79.91752470	19.18809318
B77	386225.650	2122102.904	79.91782995	19.18908692
B78	386247.081	2122260.573	79.91802445	19.19051280
B79	386238.174	2122334.118	79.91793540	19.19117684
B-80	386176.876	2122488.995	79.91734329	19.19257285
B81	386131.074	2122656.423	79.91689778	19.19408314
B82	386119.287	2122840.992	79.91677477	19.19575022
B83	386122.583	2122917.437	79.91680160	19.19644115
B85	386064.383	2123024.303	79.91624176	19.19740351
B-86	386029.138	2123095.713	79.91590233	19.19804677
B87	385994.715	2123181.015	79.91556988	19.19881561
B88	385913.622	2123438.482	79.91478337	19.20113749
KGNR	339880.274	2141158.128	79.47552108	19.35810655
SP-2	383601.441	2122660.666	79.89283939	19.19397782



Assistant Executive Engineer
PR Sub-Div. Kaghaznagar

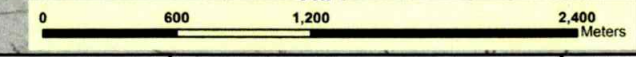
Dy. Executive Engineer
PR Sub-Division Kaghaznagar

Regional Officer (P&R)
Regional Office, Adilabad

Chief Engineer
Panchayati Raj, Kariji
Telangana State

Legend	
●	DGPS Survey points
—	Forest area proposed for diversion

Geographic Coordinate System - WGS 84 datum (UTM Zone 44 N)
District Panchayati Raj Engineer, P&R
Kumram Bheem Asifabad District



79°49'0"E 79°50'0"E 79°51'0"E 79°52'0"E 79°53'0"E 79°54'0"E 79°55'0"E 79°56'0"E