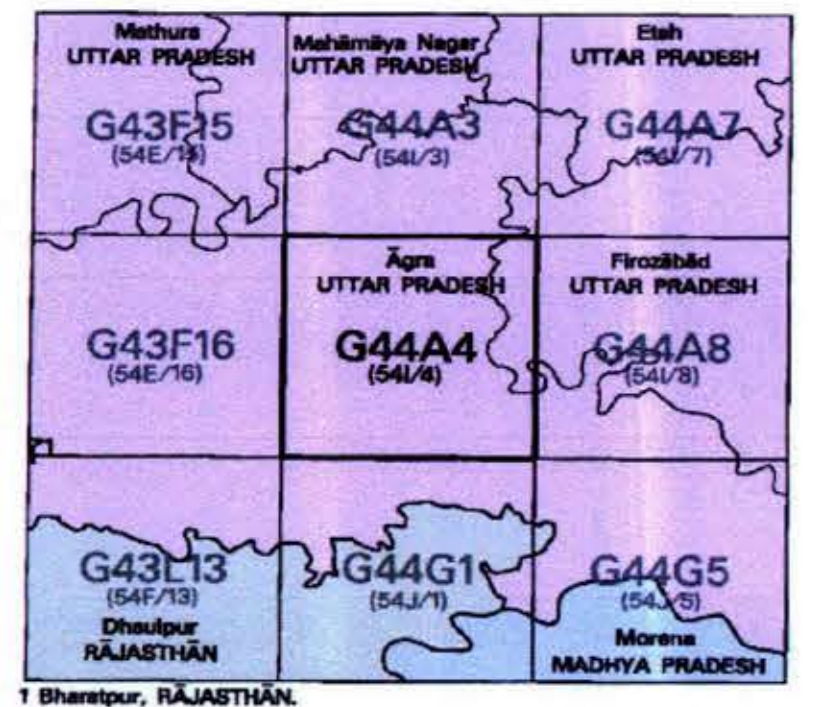


**No. G44A4**  
 Scale 1:50,000



**PLOTTER .PRINT**  
 भारतीय सर्वेक्षण विभाग SURVEY OF INDIA  
 1st Edition 2011. Price: ₹ 70/-

**CONVENTIONAL SYMBOLS**

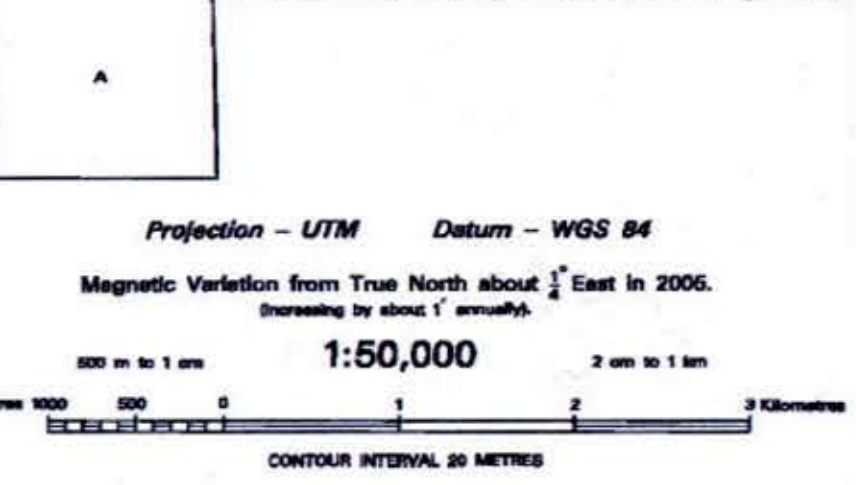
Express Highway: with toll; with bridge; with distance stone	
Roads, metalled according to importance	
Roads, Double carriageway according to importance	
Unmetalled road, Cart-track, Foot-track and pass, Foot-path	
Steamer with track in bed undefined, Canal	
Dam: masonry or rock-fill; earthwork, Weir	
River: dry with water channel; with island & rocks, Tidal river	
Submerged rocks, Shoal, Swamp, Reeds	
Water: fresh, unflooded, Tidal, brackish, Spring, Tanka, perennial, dry	
Embankment: road or rail; bank, Broken ground	
Natural, broad gauge double single with station; under construction	
Natural, other gauge: double, single with distance stone; double	
Mineral line or tramway, K.M. Cutting with tunnel	
Contour with sub-features, Rocky slopes, Cliff	
Soil features: (Salt, Desert, Sand, Saline, etc.) (Shaded relief)	
Towns or Villages: inhabited, deserted, Fort	
Hut: permanent, temporary, Tower, Antenna, Mast	
Temple, Chhatri, Church, Mosque, Light, Tomb, Shrine	
Lighthouse, Lightship, Buoy: lighted, unlighted, Aids to navigation	
Mts. View on profile, Grass, Scrub	
Palms: palm-tree, other, Plantain, Coconut, Bamboo, Other trees	
Area: cultivated, wooded, Surveyed tree	
Boundary, International	
State: demarcated, undemarcated	
District: demarcated, taluk or sub-division	
Boundary, Filter: surveyed, uncoloured	
Height: triangulation station; point; approximate	
Spot-height: geodetic; tertiary; aneroid	
Post office, Telegraph office, Overhead tank	
Rail House or Inspection Bungalow, Circuit House, Police Station	
Camping ground, Forest: reserved, protected	
Special names: administrative locality or village	
Hospital, Dispensary, Veterinary Hospital / Dispensary	
Aerodrome, Helipad, Tourist etc.	
Power line: with poles surveyed, with poles un-surveyed	

**Legend**  
 Proposed Forest Land to be Diverted

**REFERENCES**  
 NY 2 National Highway No. 2, NY 2 National Highway No. 2, NY 59 National Highway No. 59, City Chitray

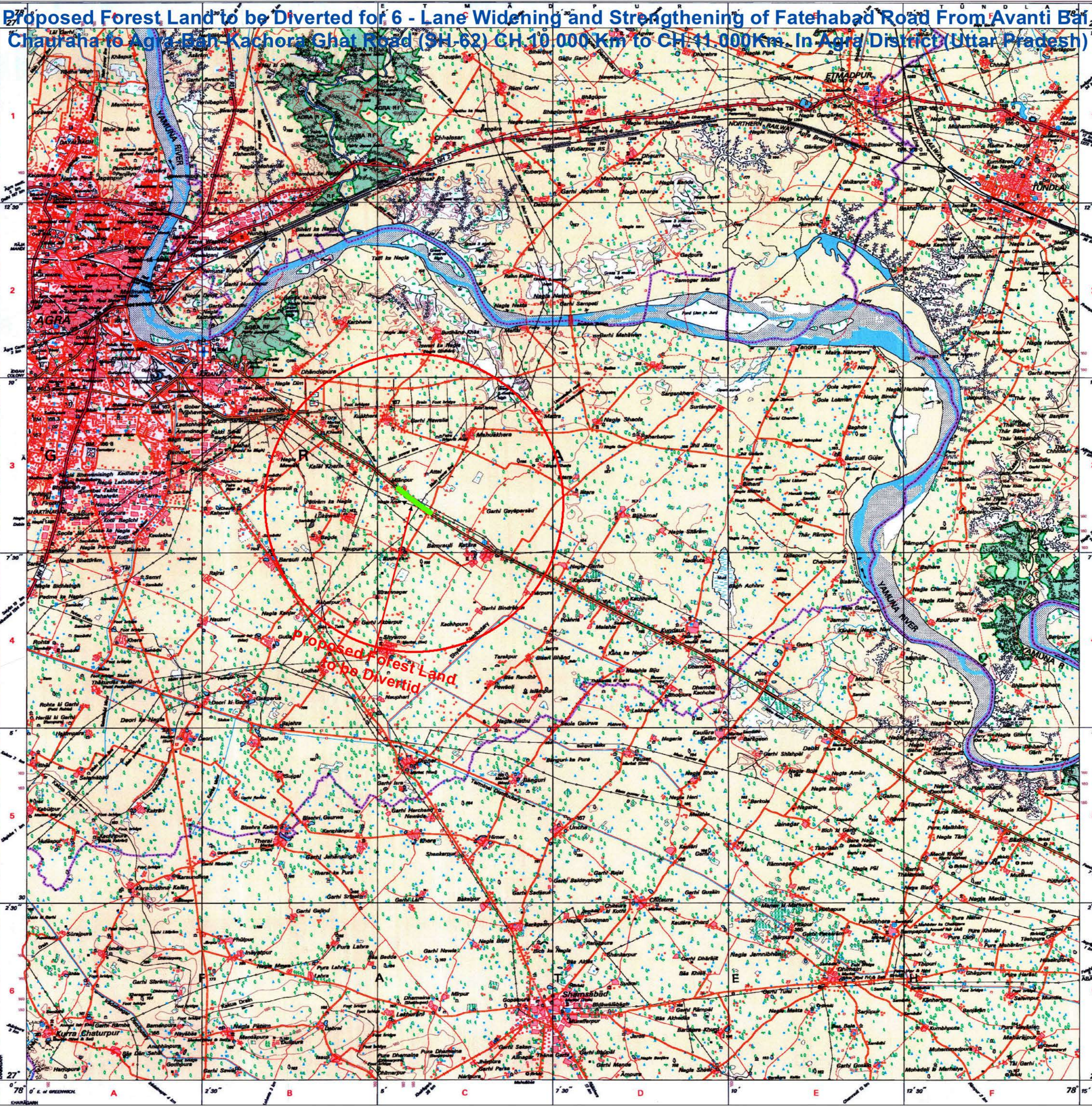
**NOTES**  
 Heights are in metres and above Indian mean sea level.  
 Contours are approximate.  
 A metric height, B, represents the approximate height, in metres, between the top and bottom of a steep slope.  
 The minimum zone numbers along roads, railways are shown in small type, e.g., "5"  
 Wherever zone numbers are shown in small type, e.g., "5"  
 Wells and tube-wells are numerous throughout the area; only important ones have been shown.  
 Tanks, shown dry, in this area, usually contain water from July to December.  
 Unmetalled roads and cart-tracks in this sheet are generally motorable in dry season.  
 This sheet has been compiled from 1:25,000 survey.

**COMPILED INDEX**  
 A Surveyed during 1977-72. Updated for major details during 2005-06.



For further details about this map, please contact:  
 Additional Surveyor General  
 Uttar Pradesh & West Uttar Pradesh Geo-Spatial Data Centre  
 Survey of India, 17 E.C. Road, Karanpur  
 Dehra Dun  
 Fax: 0136 - 2666402

WEBSITE - www.surveyofindia.gov.in



(अजय कुमार)  
 अधिशासी अभियन्ता  
 नि०ख०-१(ता०टि०), ल०न०वि०  
 भागरा