

महाराष्ट्र  
MAHARASHTRA

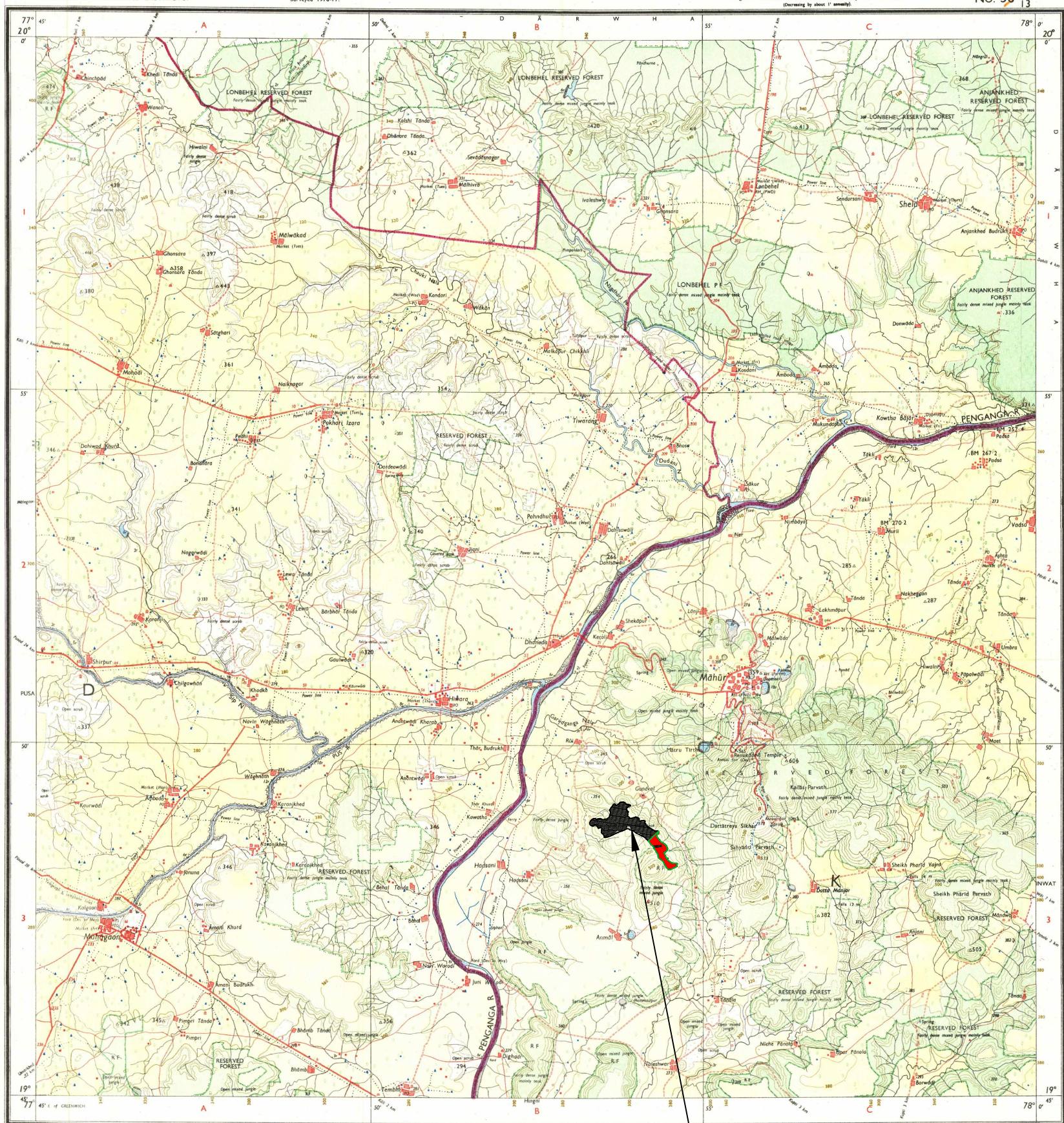
FIRST EDITION

भारत INDIA  
REFER TO THIS MAP AS :- 1:50,000  
SHEET 56 E / 13 FIRST EDITION

NĀNDED & YAVATMĀL DISTRICTS.

Surveyed 1976-77.

Magnetic Variation from True North about  $1\frac{1}{4}^{\circ}$  West in 1975.  
(Decreasing by about  $1'$  annually).

No. 56  $\frac{E}{13}$ [illegible]

Index to Sheets

55 $\frac{H}{12}$	55 $\frac{H}{16}$	55 $\frac{1}{4}$
56 $\frac{E}{9}$	56 $\frac{E}{13}$	56 $\frac{1}{1}$
55 $\frac{E}{10}$	56 $\frac{E}{14}$	56 $\frac{1}{2}$

[illegible]

Contours are shown in brown. Contour interval 20 metres.

Water features are shown in blue where they generally contain water.

Cultivated areas are coloured yellow.

The exterior boundaries of areas of Reserved or Protected Forests are shown by green ribands.

Contours are approximate.

A relative height, 60, represents the approximate height, in metres, between the top and bottom of a steep slope.


Wooded areas are coloured green. Scattered trees and other vegetation are in green, but

The triangulated heights and contours in this sheet have not been adjusted to the heights of the spirit-levelled beech-marks and may not be strictly in accordance with them.

Unmetalled roads and cart-tracks in this sheet are generally motorable in dry season.

Tanks, shown dry, in this area usually contain water from July to January.

Administrative Inde



YAVATHĀL

NĀNDE

[illegible]

© GOVERNMENT OF INDIA. COPYRIGHT, 1978.

REFER TO THIS MAP AS: 1:50,000  
SHEET 56 E / 13 FIRST EDITION

Sr. No.	Point	coordinate	
		Latitude	Longitude
1	P1	19°49'14.81"	77°53'43.58"
2	P2	19°49'2.96"	77°53'50.25"
3	P3	19°48'57.12"	77°54'10.44"
4	P4	19°48'43.19"	77°54'16.63"
5	P5	19°48'35.58"	77°54'26.29"
6	P6	19°48'32.62"	77°54'21.01"
7	P7	19°48'55.86"	77°53'49.83"
8	P8	19°48'47.59"	77°53'34.79"
9	P9	19°48'55.00"	77°53'23.60"
10	P10	19°49'1.32"	77°53'35.80"

Sr. No.	Particular	Village name	Comp. No.	survey/Gut no.	Area in Ha.
1	Total area of polygon identify	Gundwal	-	70	58.045
	Area proposed for CA land	Gundwal	-	70	13.2

INDEX	
CA LAND	BLACK COLOUR
CA LAND FOR Project	RED COLOUR
BOUNDRY PILLAR	P1,P2,P3,P4,P5,P6 P7,P8,P9,P10

# CA LAND