



No. G43S11  
Scale 1:50,000

G43S6 (45D/6)	G43S10 (45D/10)	G43S14 (45D/14)
G43S7 (45D/7)	G43S11 (45D/11) Banās Kāntha GUJARAT	G43S15 (45D/15)
G43S8 (45D/8)	G43S12 (45D/12)	G43S16 (45D/16)

1 Pātan, GUJARAT.  
2 Mehāsā, GUJARAT.  
3 Sābar Kāntha, GUJARAT.  
4 Jālor, RAJASTHAN.

भारतीय सर्वेक्षण विभाग  
SURVEY OF INDIA

1st Edition 2011. Price : Rs. 70/-

CONVENTIONAL SYMBOLS

Express highway: with toll; with bridge; with distance stone	
Roads, metalled: according to importance	
Roads, double cartway: according to importance	
Unmetalled road. Cart-track. Pack-track with pass. Foot-path	
Streams: with track in bed; undefined. Canal	
Dams: masonry or rock-filled; earthwork. Weir	
River: dry with water channel; with island & rocks. Tidal river	
Submerged rocks. Shoal. Swamp. Reeds	
Wells: lined; unlined. Tube-well. Spring. Tanks: perennial; dry	
Embankments: road or rail; tank. Broken ground	
Railways, broad gauge: double; single with station; under constn.	
Railways, other gauges: double; single with distance stone; do.	
Mineral line or tramway. Kin. Cutting with tunnel	
Contours with sub-features. Rocky slopes. Cliffs	
Sand features (1) flat. (2) sand-hill(permanent). (3) dunes(shifting)	
Towns or Villages: inhabited; deserted. Fort	
Huts: permanent; temporary. Tower. Antidiploids	
Temple. Chhatra. Church. Mosque. Ulgah. Tomb. Graves	
Lighthouse. Lightship. Buoys: lighted; unlighted. Anchorage	
Mine. View on hills. Grass. Scrub	
Palms: palmyra; other. Plantain. Conifer. Bamboo. Other trees	
Areas: cultivated; wooded. Surveyed tree	
Boundary: international	
district: subdivision; tahsil or taluk; forest	
Boundary pillars: surveyed; uncollected	
Heights, triangulated: station; point; approximate	
Bench-mark: geodetic; tertiary; canal	
Post office. Overhead tank	
Rest house or inspection bungalow. Circuit house. Police station	
Camping ground. Forest: reserved; protected	
Spaced names: administrative; locality or tribal	
Hospital. Dispensary. Veterinary Hospital / Dispensary	
Aerodrome. Helipad. Tourist site	
Power line: with pylons surveyed; with poles unsurveyed	

Proposed OFC Line

REFERENCE  
NH 14 National Highway No. 14.

NOTES :-  
Heights are in metres and above Indian mean sea level.  
Contours are approximate.  
A relative height,  $h_r$ , represents the approximate height, in metres, between the top and bottom of a steep slope.  
The triangulated heights and contours in this sheet have not been adjusted to the heights of the spirit-levelled bench-marks and may not be strictly in accordance with them but the discrepancy is unlikely to exceed 2 metres.  
Tanks, shown dry, in this area, usually contain water from July to September.  
Cart-tracks in this sheet are generally motorable (four-wheel drive).  
Distance shown along the railway are in miles.

COMPILATION INDEX  
A. Surveyed during 1959-60. Updated for major details during 2005-06.

Projection - UTM Datum - WGS 84  
Magnetic Variation from True North about 0° in 2005.  
(Increasing by about 1° East annually).  
1:50,000  
500 m to 1 cm  
2 cm to 1 km  
Metres 1000 500 0 1 2 3 Kilometres  
CONTOUR INTERVAL 20 METRES

For further details about this map, please contact  
Director  
Gujarat, Daman & Diu Geo-Spatial Data Centre  
Survey of India, Sector 10(A)  
Gandhinagar.

WEBSITE - [www.surveyofindia.gov.in](http://www.surveyofindia.gov.in)

Reproduction in whole or part by any means is prohibited  
without the written permission of Survey of India, the  
National Mapping Agency.

GOVERNMENT OF INDIA COPYRIGHT, 2011.



REG. No. -SPD D11 (GD&D GDC-1:50,000)

भारत के महानगरों, सभी सूबा, राष्ट्र, के नियंत्रण में प्रकाशित,  
Published under the direction of Swarna Subba Rao, B.E., Surveyor General of India,  
Survey of India, Hathi Barkala Estate, Post Box No. 37, Dehra Dun-248001 (Uttarakhand)  
Department of Science & Technology, Government of India.

PRINTED AT THE SOUTHERN PRINTING GROUP OF SURVEY OF INDIA

Bill No. 81/47  
dt 07/03/2019  
[Signature]



No. G43S15

Scale 1:50,000

G43S10 (45D/10)	G43S14 (45D/14) Sirohi RAJASTHÂN	G43T2 (45H/2) Udaipur RAJASTHÂN
G43S11 (45D/11)	G43S15 <sup>2</sup> (45D/15)	G43T3 (45H/3)
Banas Kāntha GUJARĀT	G43S16 (45D/16)	G43T4 (45H/4) Sābar Kāntha GUJARĀT

1 Mehāsā, GUJARĀT.  
2 Disputed, GUJARĀT, RAJASTHÂN.

भारतीय सर्वेक्षण विभाग SURVEY OF INDIA

1st Edition 2011. Price: Rs. 118/-

CONVENTIONAL SYMBOLS

Express highway, with toll, with bridge, with distance stone	
Roads, metalled, according to importance	
Roads, double cartilageway, according to importance	
Unmetalled road, Cart-track, Pack-track with pass, Foot-path	
Streams, with track in bed, undefined, Canal	
Dams, masonry or rock-filled; earthwork, Weir	
River, dry with water channel, with island & rocks, Tidal river	
Submerged rocks, Shoal, Swamp, Reeds	
Wells, lined, unlined, Tube-well, Spring, Tanks, perennial, dry	
Embankments, road or rail; tank, Broken ground	
Railways, broad gauge, double, single with distance stone; do	
Railways, other gauges, double, single with distance stone; do	
Mineral line or tramway, Kiln, Cutting with tunnel	
Contours with sub-features, Rocky slopes, Cliffs	
Sand features: (1) flat, (2) sand-hills (permanent), (3) dunes (shifting), 1 2 3	
Towns or Villages: inhabited, deserted, Fort	
Huts: permanent, temporary, Tower, Antiquities	
Temple, Chhatra, Church, Mosque, Joghri, Tomb, Graves	
Lighthouse, Lightship, Buoys: lighted, unlighted, Anchorage	
Mine, Vine on trellis, Grass, Scrub	
Palms: palmyra; other, Plantain, Conifer, Bamboo, Other trees	
Areas: cultivated, wooded, Surveyed tree	
Boundary, international	
state: demarcated, undemarcated	
district, subdivision; tahsil or taluk; forest	
Boundary pillars: surveyed, unlocated	
Heights, triangulated, station; point, approximate	
Bench-mark: geodetic; tertiary; canal	
Post office, Telegraph office, Overhead tank	
Rest house or inspection bungalow, Circuit house, Police station	
Camping ground, Forest: reserved, protected	
Soaced names: administrative, locality or tribal	
Hospital, Dispensary, Veterinary, Hospital / Dispensary	
Aerodrome, Heliport, Tourist site	
Power line: with pylons surveyed; with poles unsurveyed	

Proposed OFC Line

REFERENCE

NH 14 National Highway No.14

NOTES:-

Heights are in metres and above mean sea level.  
Contours are approximate.  
A relative height, e.g., 5r, represents the approximate height, in metres, between the top and bottom of a steep slope.  
A relative height, e.g., 5r, against a well, indicates its total depth in metres.

COMPILATION INDEX

A. Surveyed during 1959-60. Updated for major details during 2005-06.



Projection - UTM Datum - WGS 84

Magnetic Variation from True North about 0' in 2005.  
(Increasing by about 1' East annually)

1:50,000



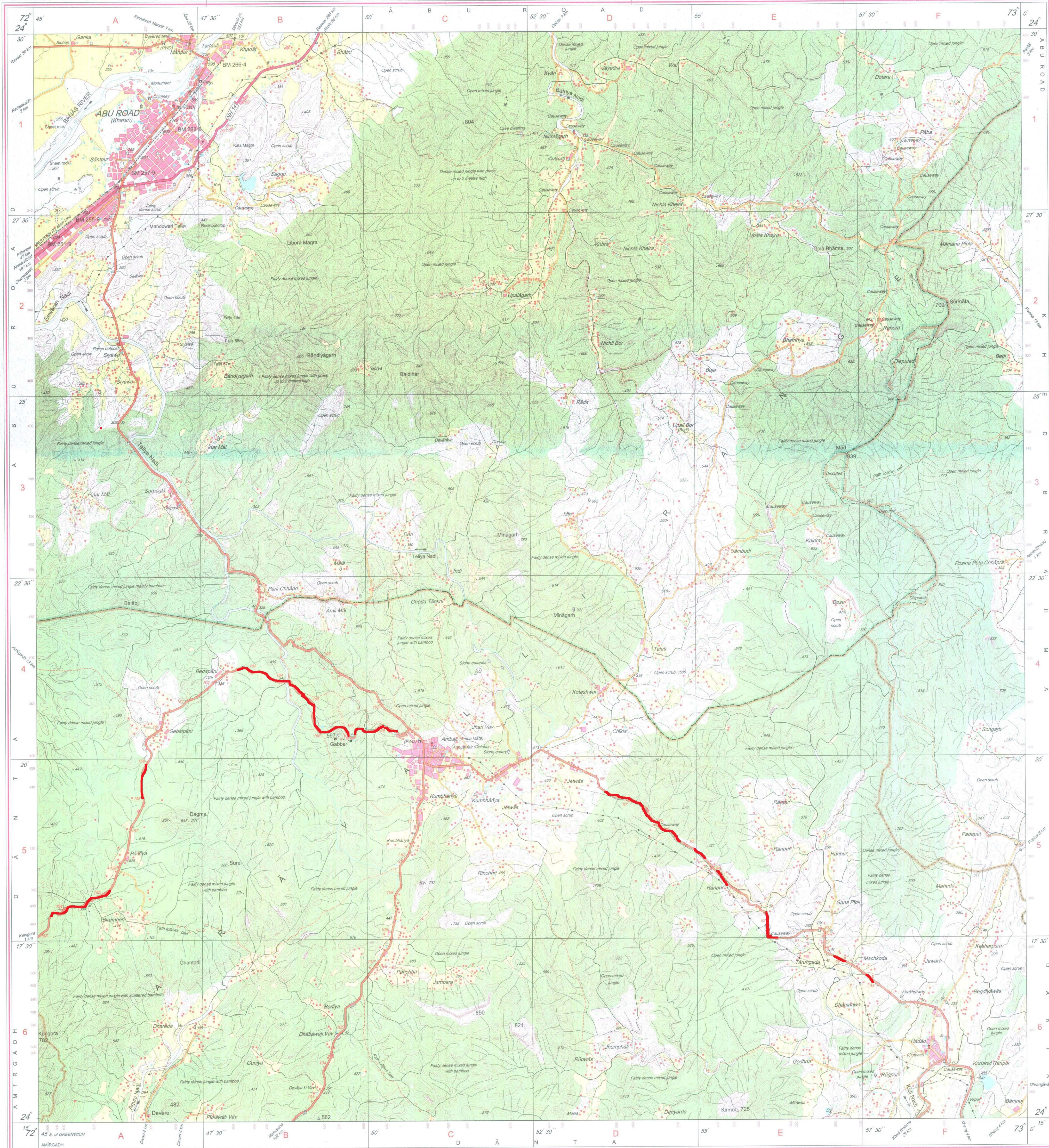
CONTOUR INTERVAL 20 METRES

For further details about this map, please contact

Director  
Gujarat, Damān & Diu Geo-Spatial Data Centre  
Survey of India, Sector -10 (A)  
Gāndhinagar.

WEBSITE - www.surveyofindia.gov.in

Reproduction in whole or part by any means is prohibited  
without the written permission of Survey of India, the  
National Mapping Agency.



REG. NO. 9956-SPG D(1) (G.D. & G.D.C. 1:50,000-1508'15)

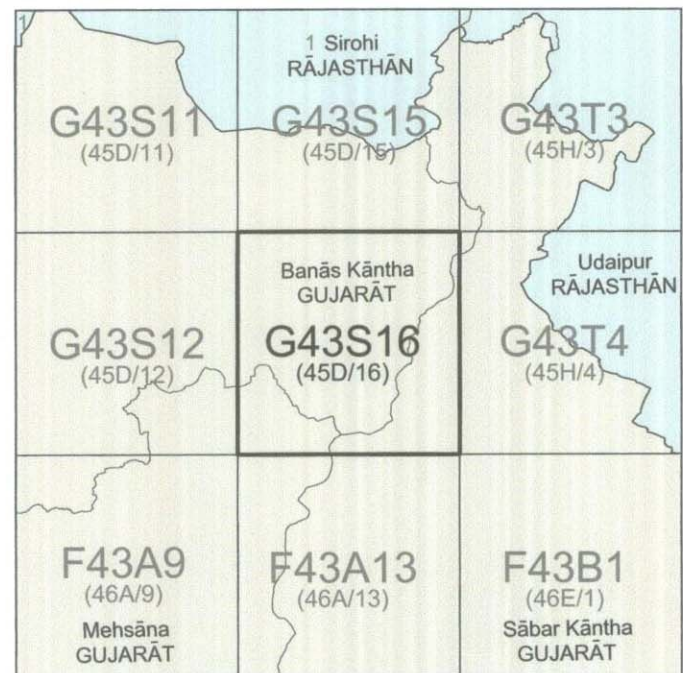
यह नक्शा राजेन्द्र मणि त्रिपाठी, एम.एस. (फिजिक्स), पी.जी. डिप्लोमा (कार्टो) (आई.टी.सी. बैरहमूर) के निदेशन में तैयार किया गया है।  
Published under the direction of Rajendra Mani Tripathi, M.Sc. (Physics), P.G. Diploma (Carto) (ITC, The Netherlands) Surveyor General of India,  
Survey of India, Hāthibarkala Estate, Post Box No. 37, Dehra Dūn - 248001 (Uttarakhand),  
Department of Science & Technology, Government of India.

PRINTED AT THE SOUTHERN PRINTING GROUP OF SURVEY OF INDIA





No. G43S16  
Scale 1:50,000



भारतीय सर्वेक्षण विभाग SURVEY OF INDIA

1st Edition 2011. Price : Rs. 70/-

CONVENTIONAL SYMBOLS

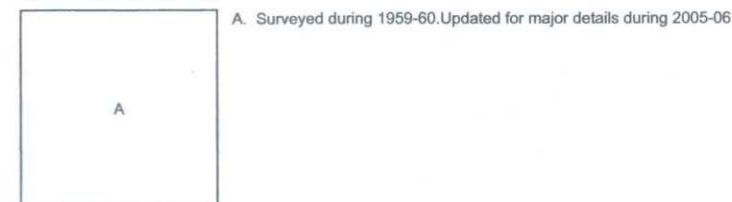


Proposed OFC Line

NOTES :-

Heights are in metres and above Indian mean sea level.  
Contours are approximate.  
A relative height, 'R' represents the approximate height, in metres, between the top and bottom of a steep slope.  
Tanks, shown dry, in this area usually contain water from July to March.  
Cart-tracks in this sheet are generally motorable (four-wheel drive).

COMPILATION INDEX



Projection - UTM Datum - WGS 84

Magnetic Variation from True North about 1° West in 2005.  
(Decreasing by about 1' annually).

1:50,000



CONTOUR INTERVAL 20 METRES

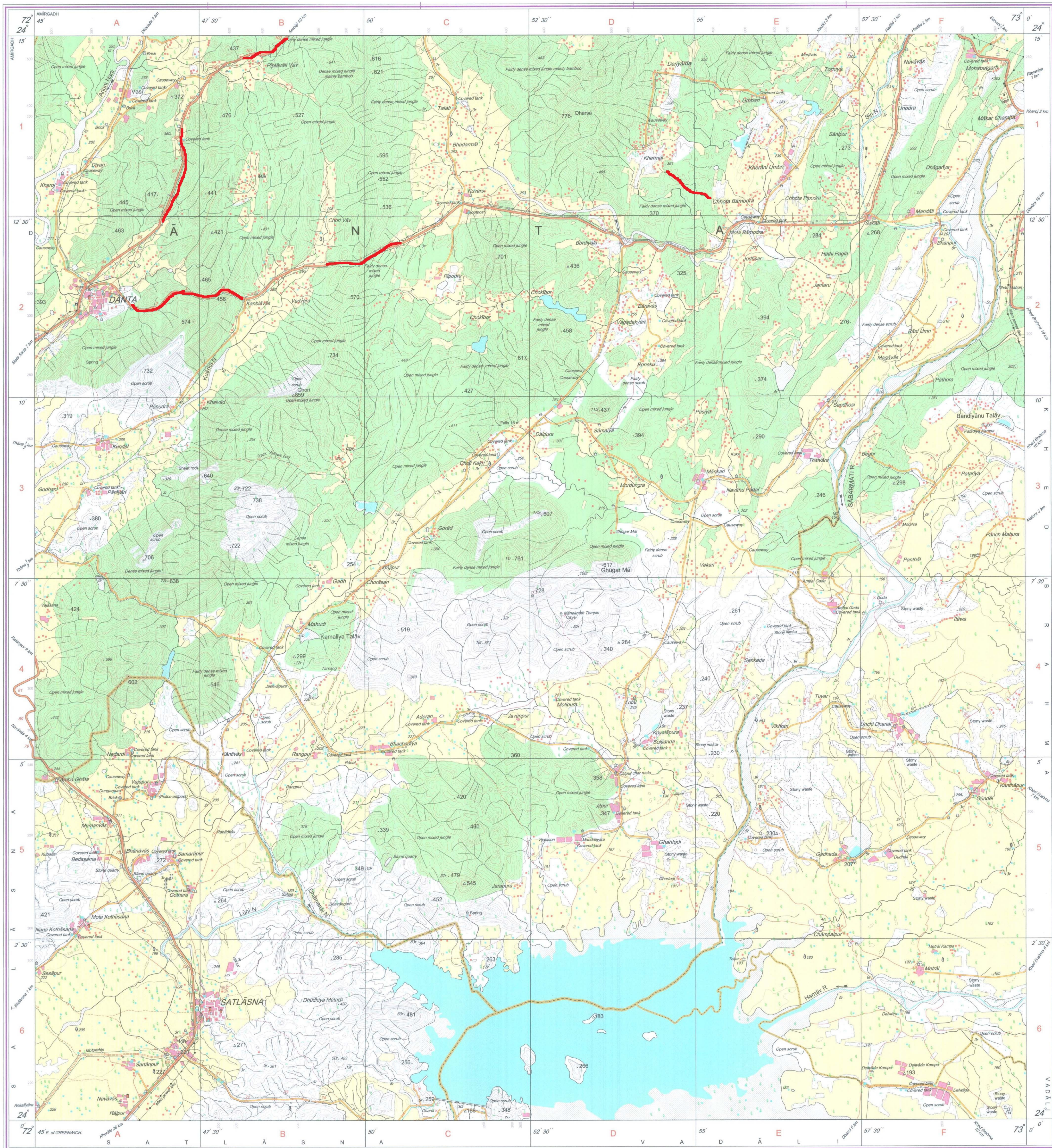
For further details about this map, please contact

Director  
Gujarat, Daman & Diu Geo-Spatial Data Centre  
Survey of India, Sector 10(A)  
Gandhinagar.

WEBSITE - www.surveyofindia.gov.in

Reproduction in whole or part by any means is prohibited  
without the written permission of Survey of India, the  
National Mapping Agency.

GOVERNMENT OF INDIA COPYRIGHT, 2011.



REG. No. SPG D11 (GDAD GDC-1:50,000)

Bill No. 61/2747  
dt. 07.03.2014

गुजरात, दमन व दीव / Gujarat, Daman & Diu  
भू-स्थानिक डेटा केंद्र / Geo Spatial Data Centre  
सर्वेक्षण विभाग, भारत / Survey of India

भारत के सर्वेक्षकों, सर्वेक्षण विभाग, देहरादून, के निर्देश में प्रकाशित,  
Published under the direction of Swarna Subba Rao, B.E., Surveyor General of India,  
Survey of India, Hattibarkala Estate, Post Box No.37, Dehra Dun-248001 (Uttarakhand)  
Department of Science & Technology, Government of India.

PRINTED AT THE SOUTHERN PRINTING GROUP OF SURVEY OF INDIA.