

TOPO SHEET:
83 M/08
83 N/05

MAP OF PROPOSED 132 KV TRANSMISSION LINE (SINGLE CIRCUIT) FROM
KHONSA TO LONGDING FALLS UNDER KANUBARI FOREST DIVISION

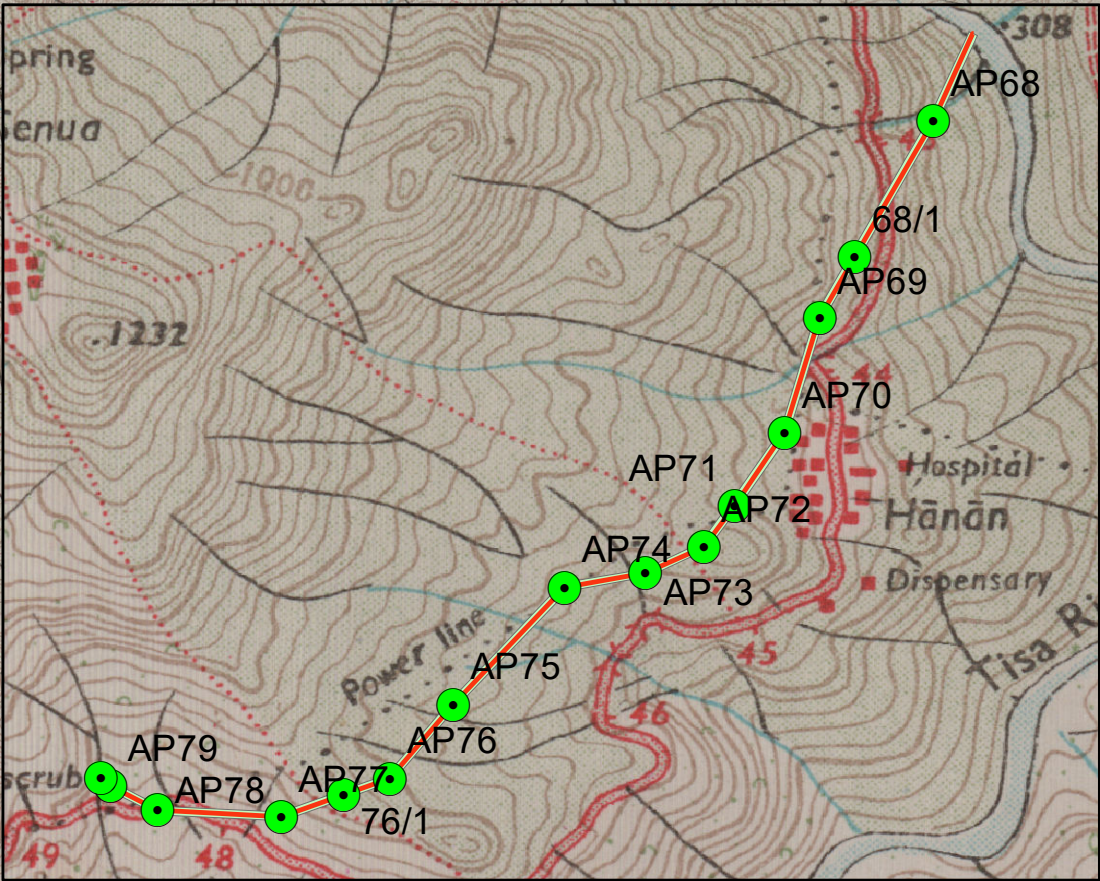


KANUBARI(LONGDING) FOREST DIVISION

STARTING POINT

KHONSA FOREST DIVISION

END POINT



Legend

- AP POINTS
- LENGTH OF ROUTE-I (132 KV T/L KHONSA TO LONGDING) FALLS UNDER USF AREA KANUBARI FOREST DIVISION: 3.768 KM
- AREA OF ROUTE-I (132 KV T/L KHONSA TO LONGDING) FALLS UNDER USF AREA KANUBARI FOREST DIVISION: 10.174 Ha

1:50,000

