

No. F42D10

Scale 1:50,000

F42D5 (41E/5)	F42D9 (41E/9)	F42D13 (41E/13)
F42D6 (41E/6)	F42D10 (41E/10) Kachchh GUJARAT	F42D14 (41E/14)
F42D7 (41E/7)	F42D11 (41E/11)	F42D15 (41E/15)

भारतीय सर्वेक्षण विभाग SURVEY OF INDIA

1st Edition 2010. Price : Rs. 70/-

#### CONVENTIONAL SYMBOLS

Express highway, with toll; with bridge; with distance stone	
Roads, metalled according to importance	
Roads, double carriageway according to importance	
Unmetalled road, Cart-track, Pack-track with pass, Foot-path	
Streams, with track in bed, underflow, Canal	
Canal, masonry or rock-lined, cut-off, Weir	
River, dry with water channel; with island & rocks, Tidal river	
Submerged rocks, Shoal, Swamp, Reeds	
Wells, lined, unlined, Tube-well, Spring, Tank, perennial, dry	
Embankments, road or rail, Tank, Broken ground	
Railways, broad gauge, double, single with station, under construction	
Railways, other gauges, double, single with distance stone, do	
Mixed line or ferryway, Steep, Cutting with tunnel	
Contours with sub-levels, Rocky slopes, Cliff	
Sand features (Flat, (Zoned-Halophytes), (Disturbed/shifted))	
Towns or Villages, inhabited, deserted, Fort	
Hills, permanent, temporary, Tower, Antiquities	
Temple, Chhatra, Church, Mosque, Idgah, Tomb, Graves	
Lighthouse, Lightship, Buoy, lighted, unlighted, Anchorage	
Mine, Vind on table, Open, Sub	
Palms, palmry, other, Parasol, Conifer, Bamboo, Other trees	
Areas, cultivated, wooded, Surveyed tree	
Boundary, International	
state, demarcated, undemarcated	
district, subdivision, tahsil or taluk, forest	
Boundary pillar, surveyed, unlocated	
Heights, triangulated station, spot, approximate	
Bench-mark, geodetic, tertiary, dam	
Post office, Overhead tank	
Rest house or inspection bungalow, Circuit house, Police station	
Camping ground, Forest reserved, protected	
Spaced names, administrative, locality or tribal	
Hospital, Dispensary, Veterinary, Hospital / Dispensary	
Aerodrome, Helipad, Tented air	
Power line, with pylons surveyed, with poles unsurveyed	

#### NOTES :-

Heights and Contours have not been shown.  
A relative height, & represents the approximate height, in metres, between the top and bottom of a steep slope.  
Tanks, shown dry in this area usually contain water from July to October.  
Cultivation is periodic and dependent on rainfall.

#### COMPILATION INDEX

A. Surveyed during 1989-96. Updated for major details during 2004-05.



Projection - UTM Datum - WGS 84

Magnetic Variation from True North about 0° West in 2005.  
(Increasing by about 1° East annually).

1:50,000

500 m to 1 cm 2 cm to 1 km

Metres 1000 500 0 1 2 3 Kilometres

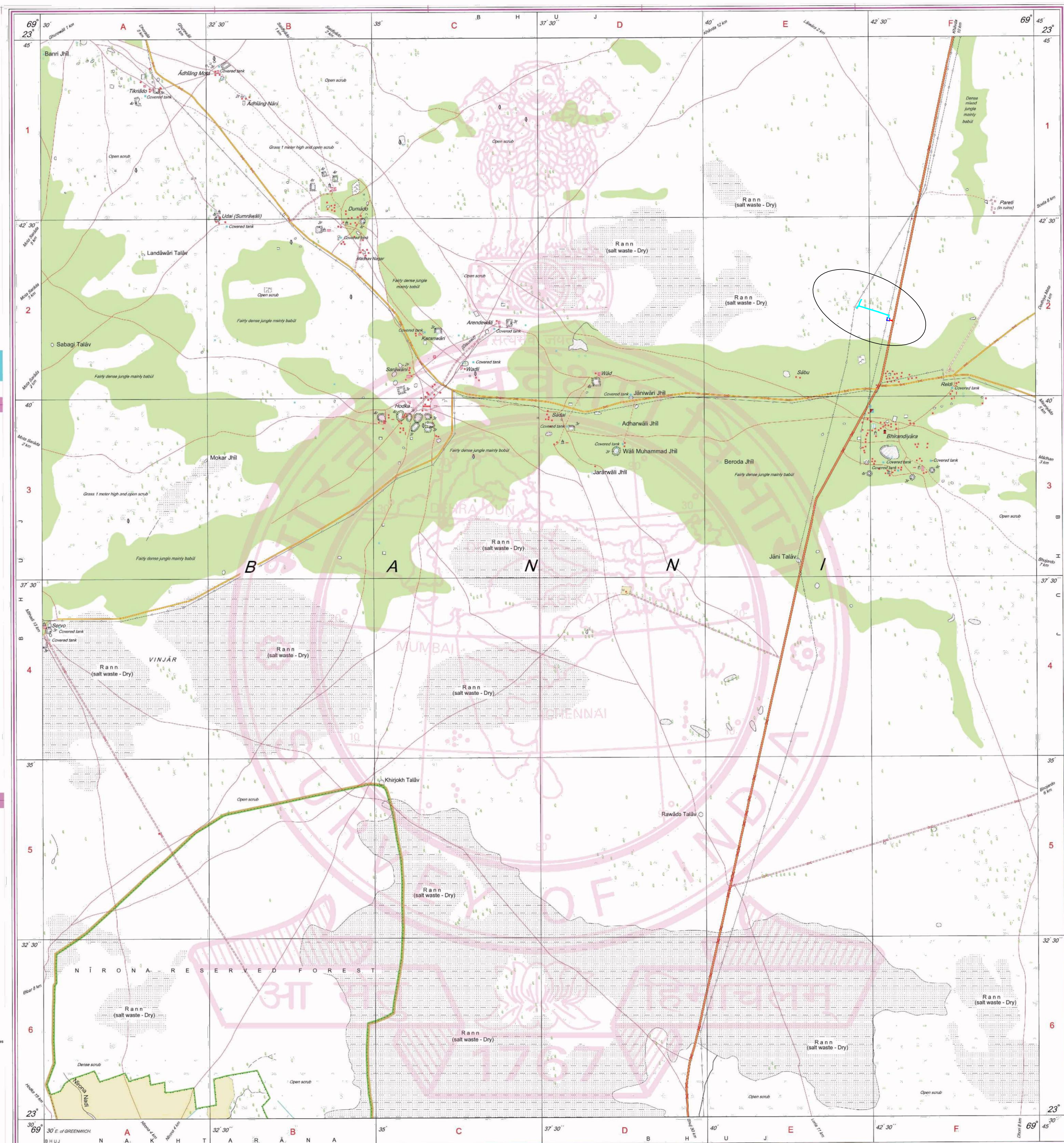
For further details about this map, please contact

Director  
Gujarat, Daman & Diu Geo-Spatial Data Centre  
Survey of India, Sector-10(A)  
Gandhinagar.

WEBSITE - www.surveyofindia.gov.in

Reproduction in whole or part by any means is prohibited  
without the written permission of Survey of India, the  
National Mapping Agency.

GOVERNMENT OF INDIA, COPYRIGHT, 2010.



- Demanded Forest area For Construction of Proposed Approach Road
- Demanded Forest area For Construction of Proposed Substation.
- Demanded Forest area For Construction of Proposed 66 KV Overhead Transmission Line.

EXECUTIVE ENGINEER(CONST.)  
GETCO, ANJAR