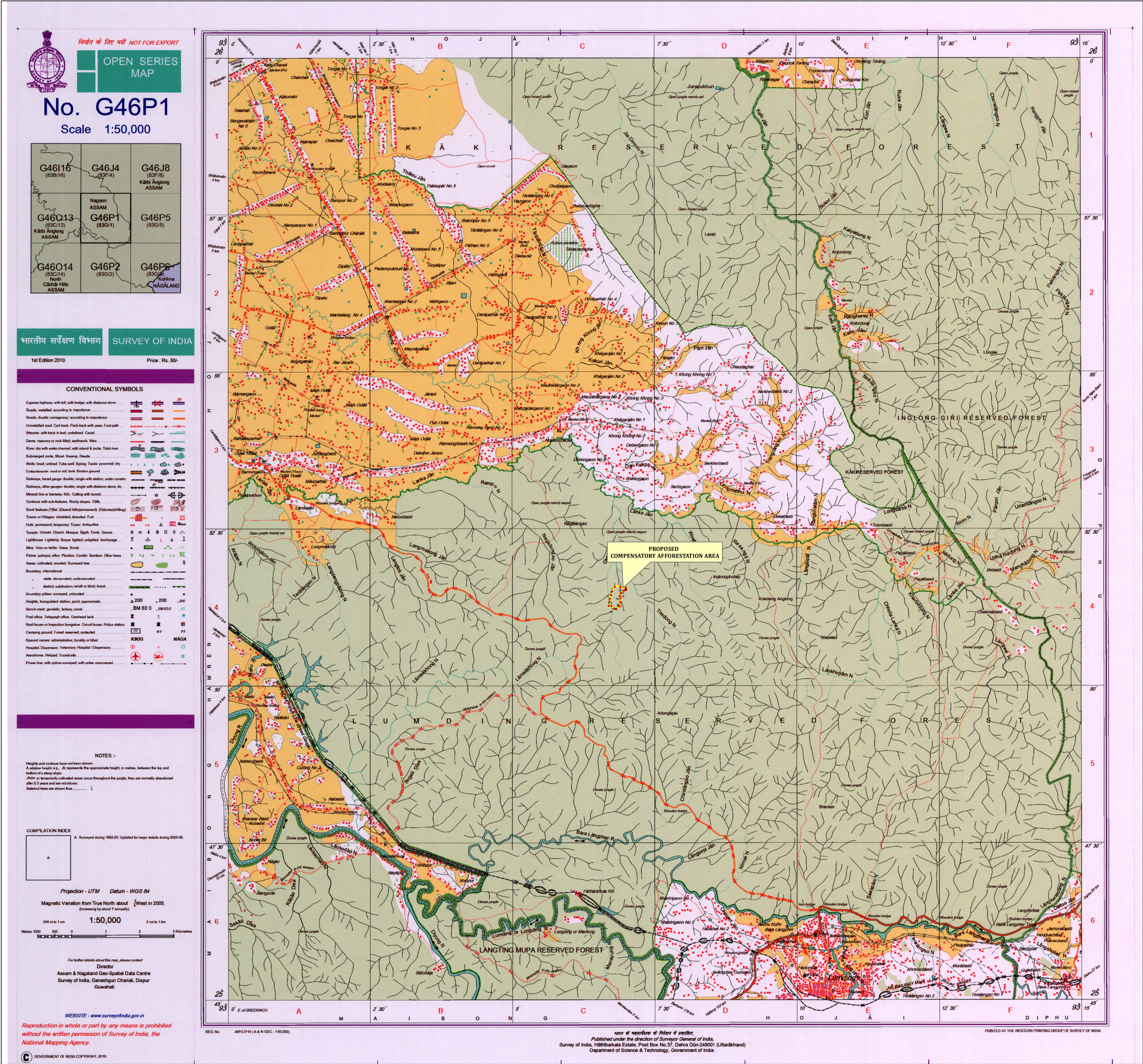


TOPOSHEET (1:50,000 SCALE) SHOWING THE PROPOSED 18.4 HECTARE COMPENSATORY AFFORESTATION AREA AT LUMDING RF  
AGAINST FOREST DIVERSION PROPOSAL FOR 132 KV SANKARDEVNAGAR - LUMDING TRANSMISSION LINE UNDER NAGAON SOUTH DIVISION, HOJAI  
SCALE:- 1:50,000



Legend	
	G.P.S. POINTS OF THE PROPOSED COMPENSATORY AFFORESTATION AREA
	PROPOSED COMPENSATORY AFFORESTATION AREA

GPS COORDINATES OF THE PROPOSED COMPENSATORY AFFORESTATION AREA						PROPOSED COMPENSATORY AFFORESTATION AREA (HA)	LOCATION DETAIL	NAME OF FOREST DIVISION
GPS POINTS	LONGITUDE	LATITUDE	GPS POINTS	LONGITUDE	LATITUDE			
1	93° 6' 59.428"E	25° 51' 33.963"N	11	93° 6' 49.195"E	25° 51' 13.520"N	18.40	LUMDING RF	NAGAON SOUTH FOREST DIVISION
2	93° 6' 53.811"E	25° 51' 34.699"N	12	93° 6' 51.654"E	25° 51' 16.571"N			
3	93° 6' 47.716"E	25° 51' 34.783"N	13	93° 6' 53.169"E	25° 51' 16.438"N			
4	93° 6' 45.046"E	25° 51' 30.431"N	14	93° 6' 53.895"E	25° 51' 20.459"N			
5	93° 6' 43.995"E	25° 51' 27.037"N	15	93° 6' 53.627"E	25° 51' 23.852"N			
6	93° 6' 42.545"E	25° 51' 23.389"N	16	93° 6' 53.259"E	25° 51' 26.179"N			
7	93° 6' 42.200"E	25° 51' 20.878"N	17	93° 6' 54.234"E	25° 51' 28.697"N			
8	93° 6' 41.624"E	25° 51' 16.783"N	18	93° 6' 56.945"E	25° 51' 31.181"N			
9	93° 6' 44.297"E	25° 51' 16.623"N	19	93° 6' 58.846"E	25° 51' 31.528"N			
10	93° 6' 46.583"E	25° 51' 13.823"N	20	93° 6' 59.490"E	25° 51' 32.732"N			