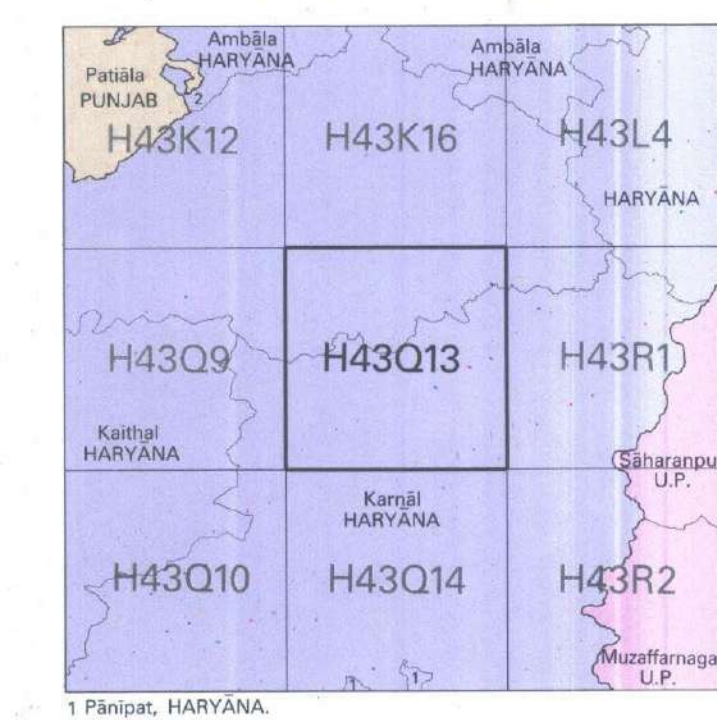


No. H43Q13

Scale 1:50,000



भारतीय सर्वेक्षण विभाग

SURVEY OF INDIA

1st Edition 2007.

Price : Rs. 50 / -

CONVENTIONAL SYMBOLS

Express Highway; with toll; with bridge; with distance stone		
Roads, metalled: according to importance		
Roads, double carriageway: according to importance		
Unmetalled road. Cart-track. Pack-track with pass. Foot-path		
Streams: with track in bed; undefined. Canal		
Dams: masonry or rock-filled; earthenwork. Weir		
River; dry with water channel; with island & rocks. Tidal river		
Submerged rocks. Shoal. Swamp. Reeds		
Wells: line; unlined. Tube well. Spring. Tanks: perennial; dry		
Embankments: road or rail; tank. Broken ground		
Railways: broad gauge; double; single; with station; under constr.		
Railways: other gauges; double; single; with distance stone; do		
Mineral line or tramway. Kālin. Cutting with tunnel		
Contours with sub-features. Rocky slopes. Cliffs		
Sand features: (fitted) (dune-hills) (permanents) (ridges) (spitting)		
Towns or Villages: inhabited; deserted. Fort		
Huts; permanent; temporary. Tower. Antiquities		
Temple. Chhatra. Church. Mosque. Idgah. Tomb. Graves		
Lighthouse. Lighthouse. Buoy: lighted; unlighted. Anchorage		
Mine. Vine on trellis. Grass. Scrub		
Palms: palmyra; other. Plantain. Confer. Bamboo. Other trees		
Areas: cultivated; wooded. Surveyed tree		
Boundary, international		
state: demarcated; undemarcated		
district: subdivided; taluk or taluk; forest		
Pillars: surveying; unlocated; village trijunction		
Height, triangulated; station; point; approximate		
Bench-mark: geodetic; arbitrary; canal		
Post office. Telegraph office. Overhead tank		
Rail head or inspection bungalow. Circuit house. Police station		
Camping ground. Forest: reserved; protected		
Spaced names: administrative, locality or tribal		
Hospital. Dispensary. Veterinary hospital		
Aérodrome. Helpaid. Tourist site		
Power line: with pylons surveyed; with poles unsurveyed		

REFERENCE

NH 1 National Highway No. 1

NOTES :-

Heights are in metres and above Indian mean sea level.
 Contours are approximate.
 Important Government buildings are shown in black with names.
 Tanks shown dry, in this area usually contain water from July to December.
 A relative height (e.g. $\text{e.g. } \text{J}$) represents the approximate height in metres between the top and bottom of a steep slope.
 Unsettled roads and cart-tracks in this sheet are generally motorable in dry season. Permission to use those along canals is required from the Irrigation authorities.
 3,000-acre reclamation stones of Bhakra Dam Project Surveys are shown as tertiary bench marks thus ... $\text{B}1238$ BM 252.9.

3
COMPILATION INDEX

A. Surveyed during 1989-90. Updated for major details during 2005-06.

Projection - UTM Datum - WGS 84

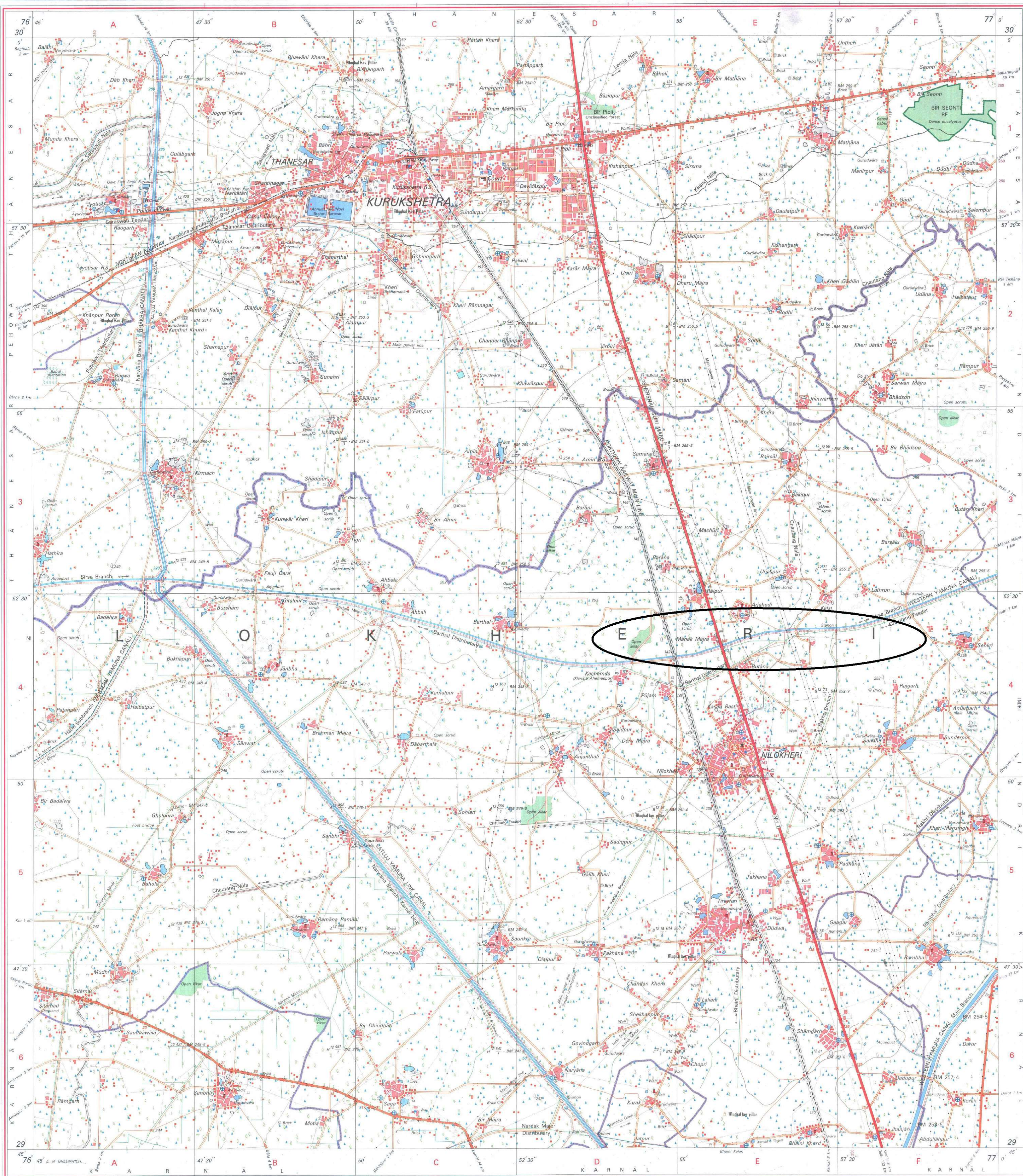
Magnetic Variation from True North about 1° East in 2000.
(Increasing by about 2' annually).

1:50,000

CONTOUR INTERVAL 10 METRES

For further details about this map, please contact
Director
Haryana Geo-Spatial Data Centre
Survey of India, Sector 32 A
Chandigarh.
Fax : 0172 - 2604671

WEBSITE – www.surveyofindia.gov.in



REG. No.7385-SPG D '07 (Haryana GDC-I:50,000)-1510

भारत के मासस्थैक मेजर जनरल एम० गोपाल राव, पी०टी०, पी० जे० एिफ० (एरियल फोटो), एम०आई०एम०ए०, एम०डी०एम०, एफ०आई०एम०, के निदेशन मे प्रकाशित,
Published under the direction of Major General M. Gopal Rao, B.Tech., P.G.Dip. (Aerial Photo), MIME, MCA, FIS, Surveyor General of India,
Survey of India, Hathiabarkala Estate, Post Box No. 37, Dehra Dun - 248001 (Uttarakhand)
Department of Science & Technology, Government of India.

PRINTED AT THE SOUTHERN PRINTING GROUP OF SURVEY OF INDIA