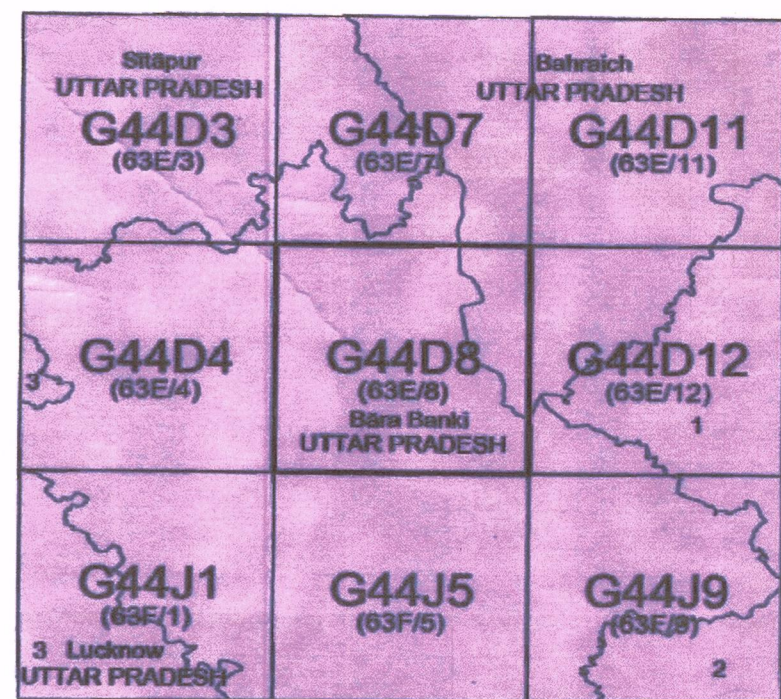


OPEN SERIES MAP

No. G44D8

Scale 1:50,000



1 Gonda, UTTAR PRADESH  
2 Faizabad, UTTAR PRADESH

भारतीय सर्वेक्षण विभाग SURVEY OF INDIA

1st Edition 2010. Price : Rs. 70/-

CONVENTIONAL SYMBOLS

- Express highway with toll, with bridge, with distance stone
- Roads, metalled according to importance
- Roads, double carriageway, according to importance
- Unmetalled road, Cart-track, Pack-track with pass, Foot-path
- Streams with back in bold, unlined, Canal
- Dams, masonry or rock-filled, earthwork, Weir
- River, dry with water channel, with island & rocks, Tidal river
- Submerged rocks, Shoal, Swamp, Reeds
- Wells, lined, unlined, Tube-well, Spring, Trench, perennial, dry
- Embankments, road or rail, Broken ground
- Railways, broad gauge, double, single with distance stone, under construction
- Railways, other gauge, double, single with distance stone, do.
- Mineral line or tramway, Kin. Cutting with tunnel
- Contours with sub-features, Rocky slopes, Cliffs
- Sand features (Wind-blown, dunes, ridges, depressions)
- Towns or Villages, inhabited, deserted, Fort
- Hills, permanent, temporary, Tower, Antenna
- Temple, Church, Mosque, Ghat, Tomb, Grave
- Lighthouse, Lightship, Buoy, lighted, unlighted, Anchorage
- Mine, Vines on hillside, Grass, Scrub
- Palms, papyrus, other, Plantain, Cuscuta, Bamboo, Other trees
- Arms, cultivated, wooded, Surveyed line
- Boundary, international
- State, demarcated, undemarcated
- District, subdivision, tahsil or taluk, forest
- Boundary pillars, surveyed, unlocated
- Height, triangulated station, point, approximate
- Bench mark, geodetic, tertiary, canal
- Post office, Telegraph office, Overhead tank
- Rail house or inspection bungalow, Court house, Police station
- Camping ground, Forest, reserved, protected
- Spaced names, administrative, locality or tribal
- Hospital, Dispensary, Veterinary, Hospital / Dispensary
- Aerodrome, Heliport, Tourist site
- Power line, with pylons surveyed, with poles unsurveyed

Legend

- Proposed Forest Land to be Diverted
- Non Forest Land

REFERENCE  
N528C National Highway No. 28 C

NOTES :-

- Height and Contours have not been shown.
- A relative height, e.g., 20 represents the approximate height, in metres, between the top and bottom of a steep slope.
- Tanks, shown dry, in this area usually contain water from July to January.
- Unmetalled roads along canals are not shown in dry season. Permission to use these is required from the irrigation authorities.
- The kilometre shown numbers along canals are shown in short type, e.g., '5' whereas milestone numbers are shown in upright type, e.g., '5'.

COMPILATION INDEX  
A Surveyed during 1964-65. Updated for major details during 2005-06 and administrative boundaries updated during 2007-08.

Projection - UTM Datum - WGS 84

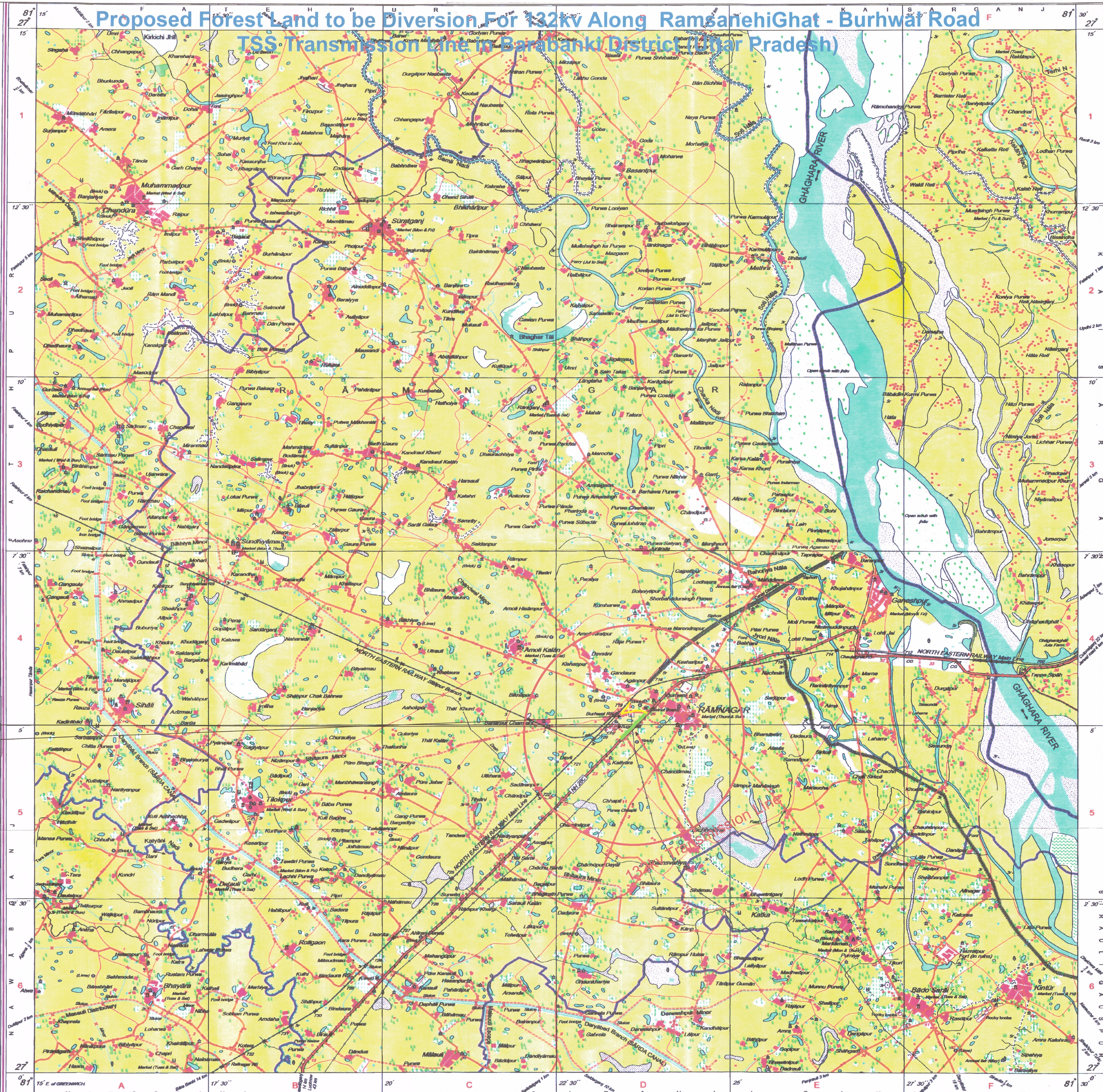
Magnetic Variation from True North about 1/2° East in 1995.  
(Increasing by about 1' annually)

Scale 1:50,000  
600 m to 1 cm  
2 cm to 1 km

For further details about this map, please contact  
Director  
East Uttar Pradesh Geo-Spatial Data Centre  
Survey of India  
B-2 Block, 2nd Floor, PICUP Bhawan, Gomti Nagar, Lucknow.

WEBSITE - www.surveyofindia.gov.in

Proposed Forest Land to be Diversion For 132kv Along Ramsanehi Ghat - Burhwar Road  
TSS Transmission Line in Barabanki District (Uttar Pradesh)



Executive Engineer  
Electric Transmission Division-III  
U.P. Power Transmission Corporation Ltd.  
Lucknow