

No. F43P5

Scale 1:50,000

| | | |
|---|------------------|---|
| Dhār MADHYA PRADESH F43J4 (46N/4) | F43J8 (46N/8) | F43J12 (46N/12) |
| Barwārī MADHYA PRADESH F43P1 (46O/1) | F43P5 (46O/5) | Khargon West Nimār MADHYA PRADESH F43P9 (46O/9) |
| F43P2 (46O/2) | F43P6 (46O/6) | F43P10 (46O/10) |

1 Dhule, MAHARASHTRA.

भारतीय सर्वेक्षण विभाग SURVEY OF INDIA

1st Edition 2009.

Price : Rs. 50/-

CONVENTIONAL SYMBOLS

- Express highway: with toll; with bridge; with distance stone ...
- Roads, metalled: according to importance ...
- Roads, double carriageway: according to importance ...
- Unmetalled road: Cart-track: Pack-track with pass. Foot-path ...
- Streams: with track in bed; undefined. Canal ...
- Dams: masonry or rock-filled; earthwork. Weir ...
- River: dry with water channel; with island & rocks. Tidal river ...
- Submerged rocks. Shoal. Swamp. Reeds ...
- Wells: lined; unlined. Tube-well. Spring. Tanks: perennial; dry ...
- Embankments: road or rail; bank. Broken ground ...
- Railways, broad gauge: double; single with station; under constr. ...
- Railways, other gauges: double; single with distance stone; do ...
- Mineral line or tramway. Kin. Cutting with tunnel ...
- Contours with sub-features. Rocky slopes. Cliffs ...
- Sand features: (1) flat. (2) sand-hills(permanent). (3) dunes(shifting) ...
- Towns or Villages: inhabited; deserted. Fort ...
- Huts: permanent; temporary. Tower. Antiquities ...
- Temple. Chhatri. Church. Mosque. Idgah. Tomb. Graves ...
- Lighthouse. Lightship. Buoy: lighted; unlighted. Anchorage ...
- Mine. Vine on trellis. Grass. Scrub ...
- Palms: palmyra; other. Plantain. Coriander. Bamboo. Other trees ...
- Area: cultivated; wooded. Surveyed tree ...
- Boundary: international ...
- state: demarcated; undemarcated ...
- district: subdivision; tahsil or taluk; forest ...
- Boundary pillars: surveyed; unlocated ...
- Heights: triangulated station; point; approximate ...
- Bench-mark: geodetic; tertiary; canal ...
- Post office. Telegraph office. Overhead tank ...
- Rest house or inspection bungalow. Circut house. Police station ...
- Camping ground. Forest: reserved; protected ...
- Spaced names: administrative; locality or tribal ...
- Hospital. Dispensary. Veterinary: Hospital / Dispensary ...
- Aerodrome. Helipad. Tourist site ...
- Power line: with pylons surveyed; with poles unsurveyed ...

REFERENCE

NH-3 National Highway No. 3.

NOTES :-

Heights are in metres and above Indian mean sea level.
Contours are approximate.
A relative height, e.g. -3-, represents the approximate height, in metres, between the top and bottom of a steep slope.
The triangulated heights and contours in this sheet have not been adjusted to the heights of the spirit-levelled bench-marks and may not be strictly in accordance with them.

COMPILATION INDEX

A. Surveyed during 1977-78. Updated for major details during 2005-06.



Projection - UTM Datum - WGS 84

Magnetic Variation from True North about $\frac{1}{2}^{\circ}$ West in 2005.
(Decreasing by about 1' annually).

1:50,000

500 m to 1 cm
1:50,000
2 cm to 1 km
3 Kilometres

CONTOUR INTERVAL 20 METRES

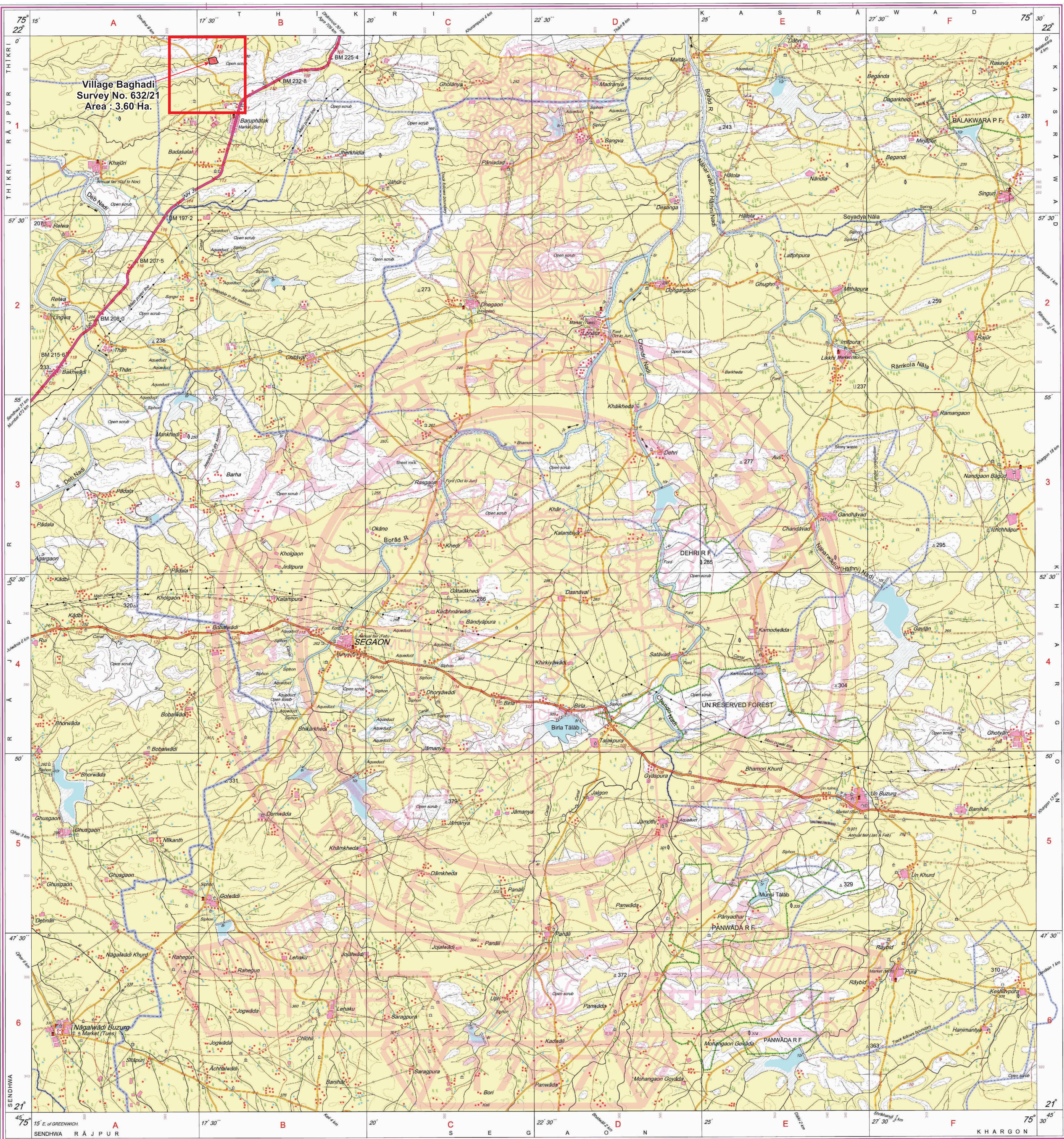
For further details about this map, please contact

Director
Madhya Pradesh Geo-Spatial Data Centre
Survey of India
Survey Colony, Vijaynagar
Jabalpur.
Fax : 0761 - 2644683

WEBSITE - www.surveyofindia.gov.in

Reproduction in whole or part by any means is prohibited
without the written permission of Survey of India, the
National Mapping Agency.

GOVERNMENT OF INDIA COPYRIGHT, 2009.



REG. No. PDF -SPG D09 (Madhya Pradesh GOC-1:50,000).

भारत के महानदीय के निदेशन में प्रकाशित,
Published under the direction of Surveyor General of India,
Survey of India, Hattibarkala Estate, Post Box No.37, Dehra Dun-248001 (Uttarakhand)
Department of Science & Technology, Government of India.

PRINTED AT THE SOUTHERN PRINTING GROUP OF SURVEY OF INDIA.

Atul Sharma
Sub-Engineer
MPRRDA, PIU-1, Barwan

General Manager
M.P. Rural Road Development Agency
Project Implementation Unit-1, Barwan