

No. F43P5

Scale 1:50,000

Dhār MADHYA PRADESH F43J4 (46N/4)	F43J8 (46N/8)	F43J12 (46N/12)
Barwārī MADHYA PRADESH F43P1 (46O/1)	F43P5 (46O/5)	Khargon West Nimār MADHYA PRADESH F43P9 (46O/9)
F43P2 (46O/2)	F43P6 (46O/6)	F43P10 (46O/10)

1 Dhule, MAHARASHTRA.

भारतीय सर्वेक्षण विभाग SURVEY OF INDIA

1st Edition 2009.

Price : Rs. 50/-

CONVENTIONAL SYMBOLS

Express highway: with toll; with bridge; with distance stone	20
Roads, metalled: according to importance	15
Roads, double carriageway: according to importance	10
Unmetalled road: Cart-track: Pack-track with pass. Foot-path	5
Streams: with track in bed; undefined. Canal	2
Dams: masonry or rock-filled; earthwork. Weir	1
River: dry with water channel; with island & rocks. Tidal river	0.5
Submerged rocks. Shoal. Swamp. Reeds.	0.2
Wells: lined; unlined. Tube-well. Spring. Tanks: perennial; dry	0.1
Embankments: road or rail; bank. Broken ground	0.05
Railways, broad gauge: double; single with station; under constr.	0.02
Railways, other gauges: double; single with distance stone; do	0.01
Mineral line or tramway. Kilm. Cutting with tunnel	0.005
Contours with sub-features. Rocky slopes. Cliffs	0.002
Sand features: (1) flat. (2) sand-hills(permanent). (3) dunes(shifting)	0.001
Towns or Villages: inhabited; deserted. Fort.	0.0005
Huts: permanent; temporary. Tower. Antiquities	0.0002
Temple. Chhatri. Church. Mosque. Idgah. Tomb. Graves	0.0001
Lighthouse. Lightship. Buoy: lighted; unlighted. Anchorage	0.00005
Mine. Vine on trails. Grass. Scrub.	0.00002
Palms: palmyra; other. Plantain. Coriander. Bamboo. Other trees	0.00001
Area: cultivated; wooded. Surveyed tree	0.000005
Boundary: international	0.000002
state: demarcated; undemarcated	0.000001
district: subdivision; taluk or taluk; forest	0.0000005
Boundary pillars: surveyed; unlocated	0.0000002
Heights: triangulated station; point; approximate	0.0000001
Bench-mark: geodetic; tertiary; canal	0.00000005
Post office. Telegraph office. Overhead tank	0.00000002
Rest house or inspection bungalow. Circut house. Police station	0.00000001
Camping ground. Forest: reserved; protected	0.000000005
Spaced names: administrative; locality or tribal	0.000000002
Hospital. Dispensary. Veterinary: Hospital / Dispensary	0.000000001
Aerodrome. Helipad. Tourist site	0.0000000005
Power line: with pylons surveyed; with poles unsurveyed	0.0000000002

REFERENCE

NH-3 National Highway No. 3.

NOTES :-

Heights are in metres and above Indian mean sea level.
Contours are approximate.
A relative height, e.g. -3-, represents the approximate height, in metres, between the top and bottom of a steep slope.
The triangulated heights and contours in this sheet have not been adjusted to the heights of the spirit-levelled bench-marks and may not be strictly in accordance with them.

COMPILATION INDEX

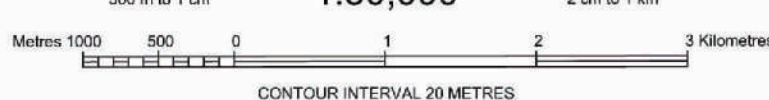
A. Surveyed during 1977-78. Updated for major details during 2005-06.



Projection - UTM Datum - WGS 84

Magnetic Variation from True North about $\frac{1}{2}^{\circ}$ West in 2005.
(Decreasing by about 1' annually)

1:50,000



CONTOUR INTERVAL 20 METRES

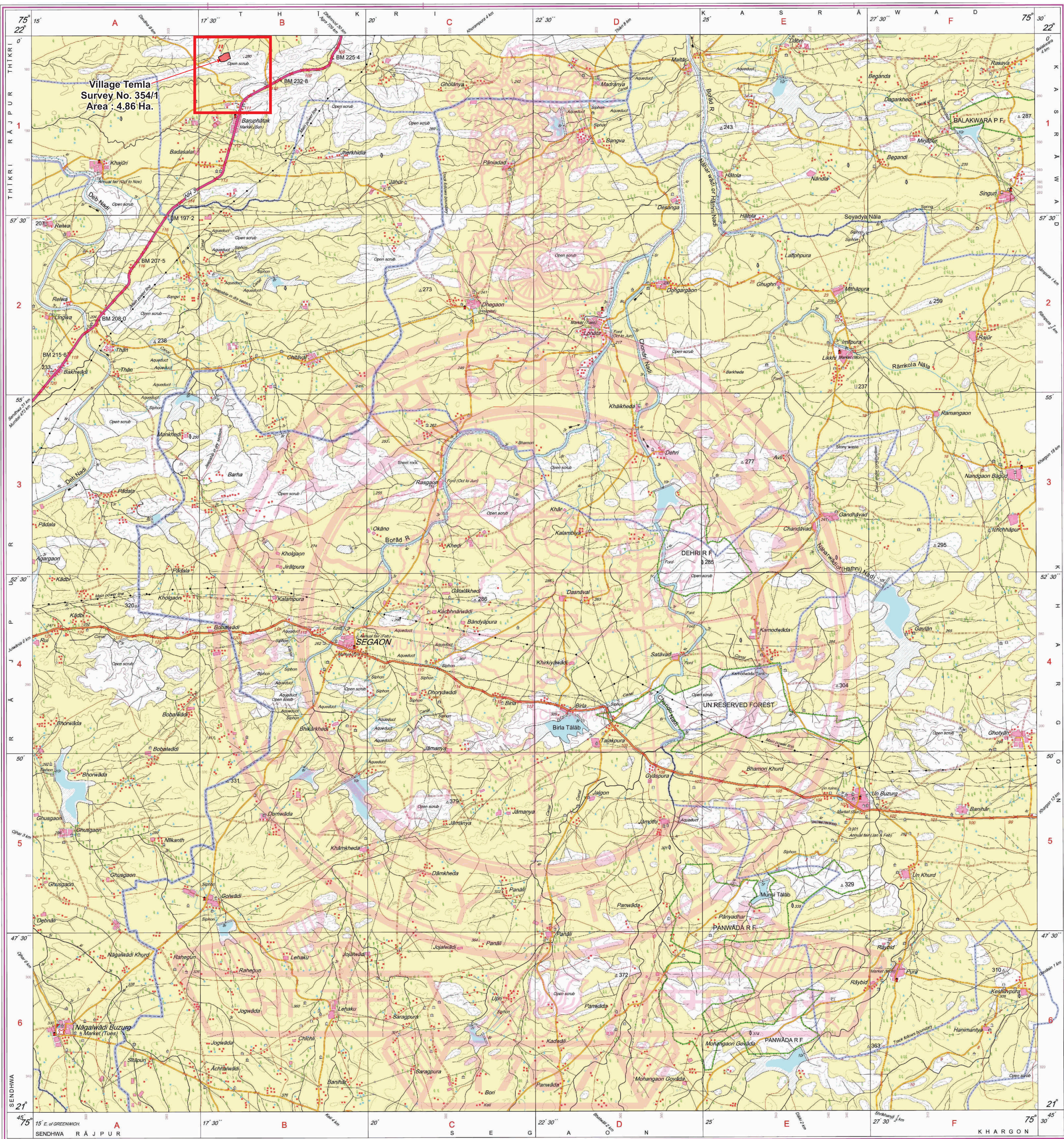
For further details about this map, please contact

Director
Madhya Pradesh Geo-Spatial Data Centre
Survey of India
Survey Colony, Vijaynagar
Jabalpur.
Fax : 0761 - 2644683

WEBSITE - www.surveyofindia.gov.in

Reproduction in whole or part by any means is prohibited
without the written permission of Survey of India, the
National Mapping Agency.

GOVERNMENT OF INDIA COPYRIGHT, 2009.



REG. No. PDF -SPG D09 (Madhya Pradesh GOC-1:50,000).

भारत के महानदीय के निदेशन में प्रकाशित,
Published under the direction of Surveyor General of India,
Survey of India, Hattibarkala Estate, Post Box No.37, Dehra Dun-248001 (Uttarakhand)
Department of Science & Technology, Government of India.

PRINTED AT THE SOUTHERN PRINTING GROUP OF SURVEY OF INDIA.

Atul Sharma
Sub-Engineer
MPRRDA, PIU-1, Barwar

General Manager
M.P. Rural Road Development Agency
Project Implementation Unit-1, Barwar