



OPEN SERIES
MAP

No. F45N16

Scale 1:50,000



LOCATION PLAN

भारतीय सर्वेक्षण विभाग
SURVEY OF INDIA

1st Edition 2005 Price : Rs. 80/-

CONVENTIONAL SYMBOLS



PLATE NO. 1

DETAILS OF THE AREA ADJOINING SOUTH-KALIAPANI MI

Sl No	Name of the Lessee	Location	Area in ha	ML/PL
1	M/s TSCCO	Shikindia	495.00	ML
2	M/s Jindal Stainless Ltd	Kaliapani	89.000	ML
3	M/s Balasore Alloys Ltd	Kaliapani	64.463	ML
4	M/s IMFA Ltd	Kaliapani	116.760	ML
5	M/s I.C.C.L.	Mahagiri	75.777	ML
6	M/s O.M.C. Ltd.	South-Kaliapani	582.497	ML
7	M/s O.M.C. Ltd.	South-Kaliapani	362.739	ML
8	M/s O.M.C. Ltd.	Kaliapani	971.249	ML
9	M/s JACOR Ltd	Ostapal	72.843	ML
10	M/s IMFA Ltd.	Chingudipal	26.620	ML

AREA PROPOSED FOR DUMP
SURROUNDING MINING LEASES

Height in m. and above sea level are shown.
Contours are shown at 10 m. intervals.
A contour height of 100 m. represents the elevation of the spot, between the top and bottom of 10 m. interval.
The dotted boundary between Kandi and Jajpur District has been surveyed as per the latest official map of the Government of India.
The dotted boundary of area of Reserved or protected Forests are shown by green lines.
The reserved boundary and contour have not been adjusted with the height of spot-height and may not be strictly in accordance with them.
Head Office is at Shimla.

COMPILED BY
A. Compiled from 1:50,000 Survey 1975-76. Updated for minor details during 2005.

Projection - UTM Datum - WGS 84
Magnetic Variation from True North about 1/2° West in 2005.
Checked by: [Signature]

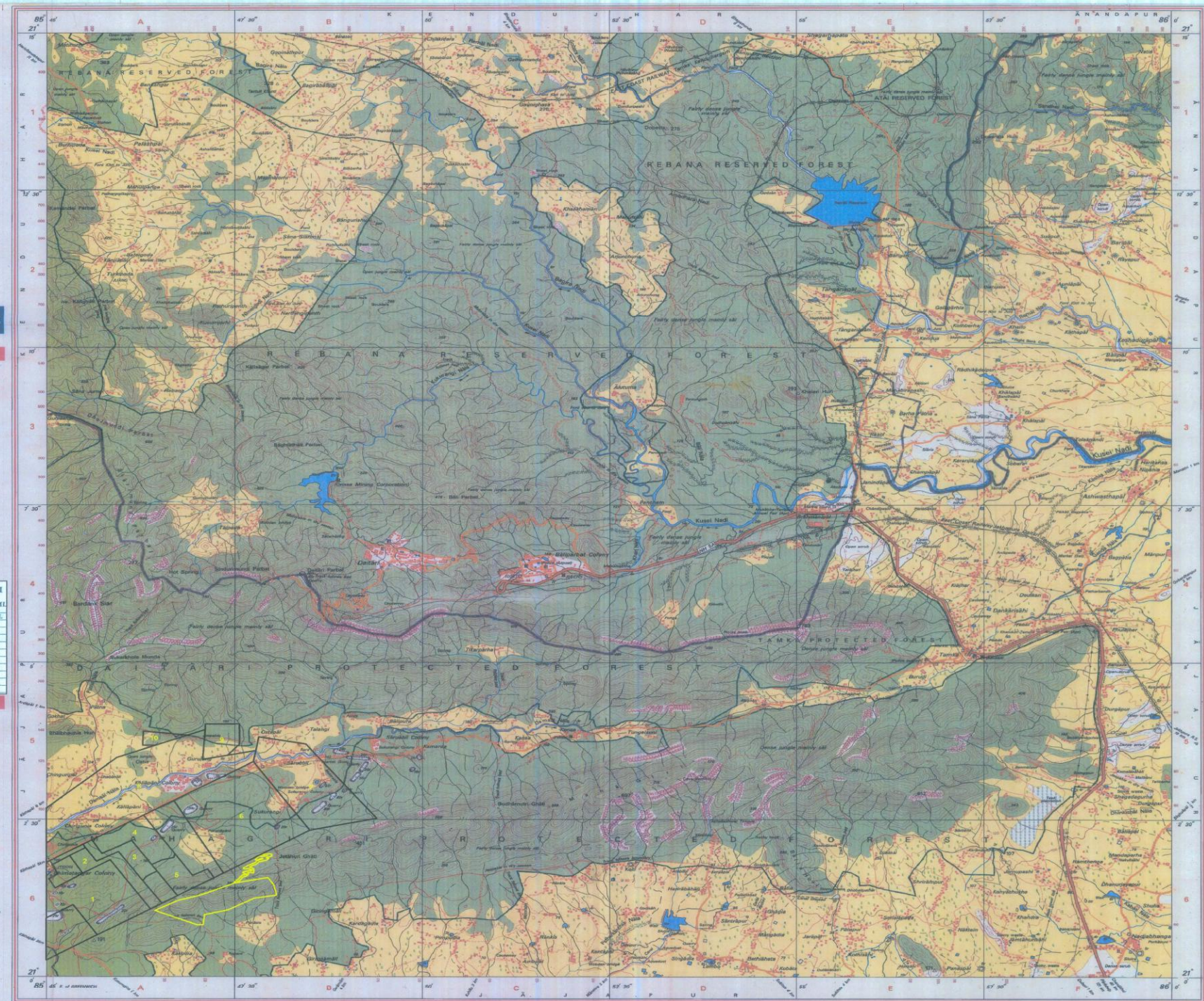
Scale 1:50,000
Graphic scale bar showing 0 to 5 Kilometres

For further details about this map, please contact
Director
Orissa Geo-Spatial Data Centre
Survey of India
Survey Branch, P.O. - P.B. Laboratory
Bhubaneswar-751003.
Fax : 0674 - 230438

WEBSITE - www.surveyofindia.gov.in

Reproduction in whole or part by any means is prohibited without the written permission of Survey of India, the National Mapping Agency.

GOVERNMENT OF INDIA COPYRIGHT, 2005



REG. No. 8407-APC-D/19 (China CDC-150,000-1015)
Printed at the Southern Printing Group of Survey of India.
N. Das
Addl. General Manager (Geo)
Power at Agency (Power)
Orissa Mining Corporation Ltd.
Bhubaneswar