

Scale 1:50,000

1	1	1	3
F43M15 (46C/15)	F43N3 (46G/3) Sūrat GUJARAT	F43N7 (46G/7)	
F43M16 (46C/16)	F43N4 (46G/4)	F43N8 (46G/8) Tāpi GUJARAT	
F43S13 (46D/13)	F43T1 (46H/1) Navsari GUJARAT	F43T5 (46H/5)	2

1 Bharūch, GUJARĀT.
2 The Dāngs, GUJARĀT.
3 Narmada, GUJARĀT.

भारतीय सर्वेक्षण विभाग

SURVEY OF INDIA

1st Edition 2010.

Price:Rs.94/-

CONVENTIONAL SYMBOLS

Express highway with toll with bridge with distance stone			
Roads: metalled according to importance			
Roads: double carriageway according to importance			
Unmetalled road: Cart-track: Pack-track with pass: Foot-path			
Streams with track in bed: undefined Canal			
Dams: masonry or rock-filled earthwork: Weir			
River: dry with water channel; with island & rocks: Tidal river			
Submerged rocks: Shoal: Swamp: Reeds			
Wells: lined: Unlined: Tube-well: Spring: Tanks: perennial: dry			
Embankments: Road or rail: Bank: Broken ground			
Railways: broad gauge: double: single with station under: over			
Railways: other gauges: double: single with distance stone: do			
Mine: ore or tramway: Kin: Cutting with tunnel			
Contours with 1:10 feature: Rocky slopes: Cliffs			
Salt features 1:1 feature: (2:1 and 3:1 permanent) (3:1 dunes) (settling)			
Towns or villages: inhabited: deserted: Fort			
Huts: permanent: temporary: Tower: Antiques			
Spire: Chhatra: Church: Mosque: Jagan: Tomb: Graves			
Lighthouse: Lighthouse: Buoy: Lighted: unlighted: Anchorage			
Mine: mine on: trail: Grass: Scrub			
Palm: palm: other: Plantain: Corn: Bamboo: Other trees			
Areas: cultivated: wooded: Surveyed: tree			
Boundary: international			
state: demarcated: undemarcated			
district: subdivision: tangle or blank: forest			
Boundary: plains: surveyed: unlocated			
Heights: triangulated: station: point: approximate			
Benchmark: magnetic: tertiary: canal			
Post: office: Overhead tank			
Rest: house or inspection: bungalow: G:round: House: Police station			
Camping ground: Forest: reserved: protected			
Spaced: names: administrative: locality or tribal			
Hospital: Dispensary: Veterinary: Hospital: Dispensary			
Aerodrome: heliport: Tourist site			

REFERENCE

NH 6 National Highway No. 6.

NOTES :-

Heights and Contours have not been shown.
A relative height, Δr , represents the approximate height, in metres, between the top and bottom of a steep slope.
Tanks, shown dry, in this area usually contain water from July to February.
In areas, where no tube-wells exist, cultivation is periodic and dependent on rainfall.

COMPILATION INDEX

A. Surveyed during 1971-72. Updated for major details during 2004-05

Projection - UTM Datum - WGS 84

Magnetic Variation from True North about 10° West in 2005.
(Decreasing by about 1° annually).

1:50,000

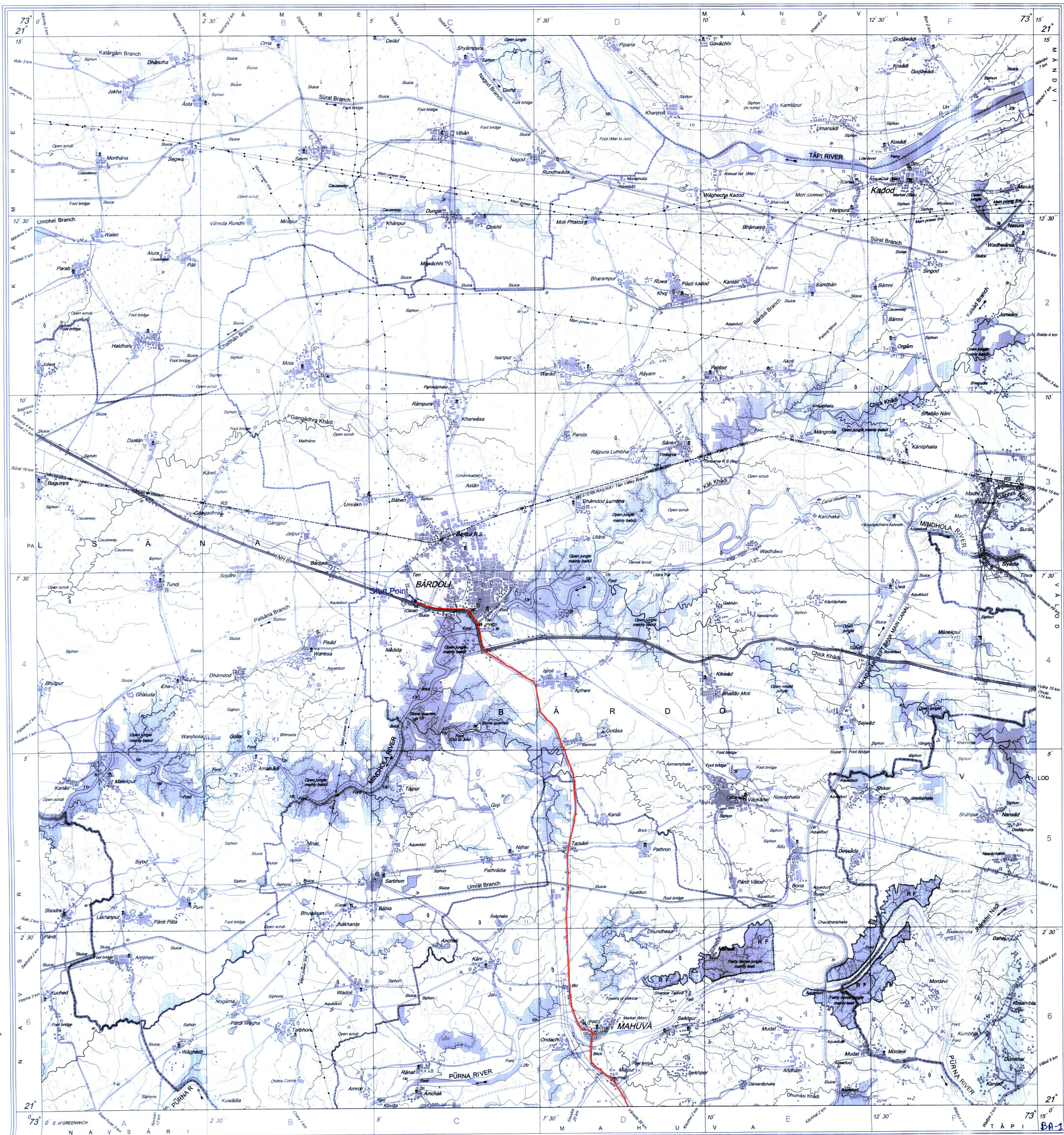
For further details about this map, please contact

Director
Gujarāt, Damān & Diu Geo-Spatial Data Centre
Survey of India, Sector 10 (A)
Gāndhīnagar.

WEBSITE - www.surveyofindia.gov.in

Reproduction in whole or part by any means is prohibited without the written permission of Survey of India, the National Mapping Agency.

GOVERNMENT OF INDIA COPYRIGHT, 2010.



REG. No. 9647-SPG D 11 (G D & D GDC-1 50,000)-1508 15

भारत के महासंशोधक राजेन्द्र मणि त्रिपाठी, एमएससी. (फिजिक्स), पीएचडीप्लोमा (कार्टो) (आईटीसी नीदरलैंड्स) के निवेदन से प्रकाशित.
Published under the direction of Rajendra Mani Tripathi, M.Sc. (Physics), P.G. Diploma (Carto) (ITC, The Netherlands) Surveyor General of India.
Survey of India, Hāthibarkala Estate, Post Box No. 37, Dehra Dūn - 248001 (Uttarākhānd),
Department of Science & Technology, Government of India.

PRINTED AT THE SOUTHERN PRINTING GROUP OF SURVEY OF INDIA.

— Proposed OFC route



निर्यात के लिए नहीं NOT FOR EXPORT

OPEN SERIES MAP

No. F43T1

Scale 1:50,000

F43M16 (46C/16)	F43N4 (46G/4)	F43N8 (46G/8) Täpi GUJARAT
F43S13 (46D/13)	F43T1 (46H/1) Navsari GUJARAT	F43T5 (46H/5)
F43S14 (46D/14)	F43T2 (46H/2) Valsad GUJARAT	F43T6 (46H/6)

भारतीय सर्वेक्षण विभाग

SURVEY OF INDIA

1st Edition 2011.

Price : Rs. 77/-

CONVENTIONAL SYMBOLS

Express Highway: with toll; with bridge; with distance stone		20
Roads, metalled: according to importance		
Roads, double carriageway: according to importance		
Unmetalled road: Cart-track: Paved track with pass. Foot path.		
Streams: with track or bed, underdrain. Canal		
Dams: masonry or rock-fill, earthwork. Weir.		
River: dry with water channel, with island & rocks. Tidal river.		
Submerged rocks. Shal. Swamp. Reeds.		
Wells: lined. Unlined. Tube-well. Spring. Tanks: perennial, dry.		
Embankments: road or rail, tank. Broken ground.		
Railways: broad gauge: double, single with station; under, constr		
Railways: other gauges: double, single with distance stone, do		
Mineral line or tramway. Kln. Cutting with tunnel.		
Contours with sub-features. Rocky slopes. Cliffs.		
Sand features (1 flat. 2 (Z)-shaped permanent). 3 (dunes/shifting)		
Towns or Villages: enabled, deserted. Fort.		
Us: Permanent, temporary. Tower. Antiquities.		
Temple. Chhatr. Church. Mosque. Idgah. Tomb. Graves.		
Lighthouse. Lightship. Buoy; lighted; unlighted. Anchorage.		
Mine. Mine on trellys. Gravel. Scar.		
Palm: palmyra; other. Plantation. Canebr. Bamboo. Other trees.		
Areas: cultivated, wooded. Surveyed tree.		
Boundary, international		
state demarcated, undemarcated		
district, subdivision, taluhal or taluk, forest.		
Boundary pillars: surveyed, unlocated		
Heights, triangulated station: point, approximate		
Benchmark: geodetic, tertiary, canal		
Post office. Overhead tank		
Rest house or Inspection bungalow. Circuit house. Police station		
Camping ground. Forest: reserved, protected		
Spaced names: administrative, locality or tribal		
Hospital. Dispensary. Veterinary Hospital / Dispensary		
Aerodrome: Heliport. Tourist site		
Power line: with pylons surveyed, with poles unsurveyed		

REFERENCE

NH 8 National Highway No. 8

NOTES :-

Heights and Contours have not been shown.
A relative heights, &R, represents the approximate height, in metres, between the top and bottom of a steep slope.
Tanks, shown dry, in this area usually contain water from July to December
Cultivation is periodic and dependent on rainfall

COMPILATION INDEX

A Surveyed during 1970-71. Updated for major details from 1:25,000 survey, 1999-2000.

Projection - UTM Datum - WGS 84

Magnetic Variation from True North about 44° West in 2005.

1:50,000

Metres 1000 500 0 1 2 3 Kilometres

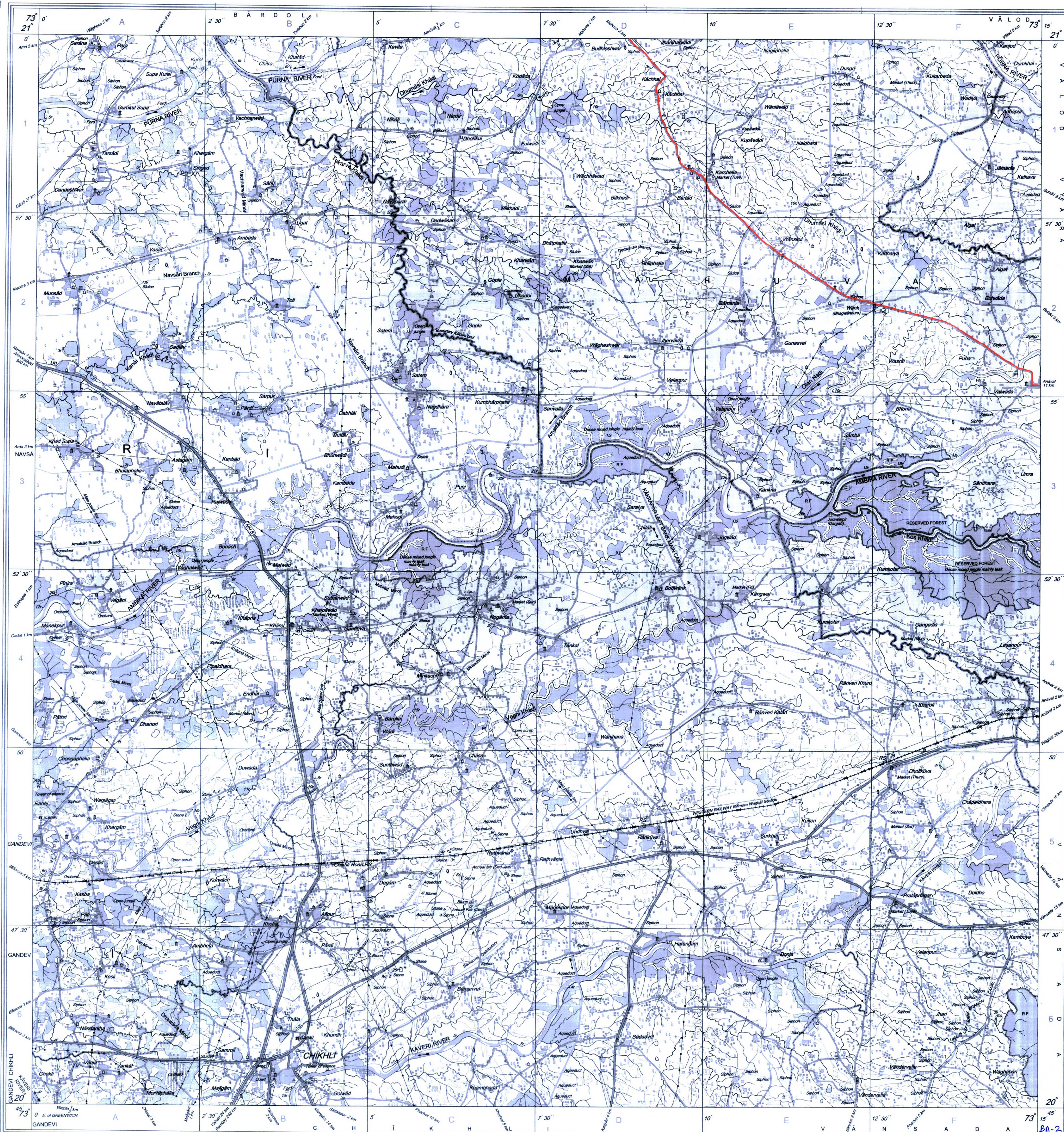
For further details about this map, please contact

Director
Gujarāt, Damān & Diu Geo-Spatial Data Centre
Survey of India, Sector 10- A
Gāndhinagar.

WEBSITE - www.surveyofindia.gov.in

Reproduction in whole or part by any means is prohibited without the written permission of Survey of India, the National Mapping Agency.

© GOVERNMENT OF INDIA COPYRIGHT, 2011.



REG. No. -SPG D'11 (GD & D GDC-1:50.000)

भारत के महासर्वेक्षक, स्वर्ण सुब्बा राव, बी०ई०, के निदेशन में प्रकाशित,
Published under the direction of Swarna Subba Rao, B.E., Surveyor General of India,
Survey of India, Hathi Barkala Estate, Post Box No.37, Dehra Dun-248001 (Uttarakhand)
Department of Science & Technology, Government of India.

PRINTED AT THE SOUTHERN PRINTING GROUP OF SURVEY OF INDIA.

 Proposed OFC route



निर्यात के लिए नहीं NOT FOR EXPORT

No. F43T5

Scale 1:50,000

F43N4 (46G/4)	F43N8 (46G/8) Tapi GUJARAT	F43N12 (46G/12)
F43T1 (46H/1) Navsari GUJARAT	F43T5 (46H/5)	F43T9 (46H/9) Dangs GUJARAT
F43T2 (46H/2) Valsad GUJARAT	F43T6 (46H/6)	F43T10 (46H/10)

1 Dhule, Maharashtra
2 Nandurbar, Maharashtra

1st Edition 2011.

Price : Rs. 77/-

CONVENTIONAL SYMBOLS

Express highway, with toll; with bridge; with distance stone		20
Roads, metalled; according to importance		
Roads, double cartage-way; according to importance		
Unmetalled road, Cart-track, Pack-track with pass, Foot-path		
Streams, with track in bed, underfed, Canal		
Dam; masonry or rock-filled; earthwork, Well		
River, dry with water channel; with island & rocks, Tidal river		
Submerged rocks, Shoal, Swamp, Roads		
Wells, lined, unfired, Tube-well, Spring, Tanks, perennial, dry		
Embankments, road or rail, tank, Broken ground		
Railways, broad gauge, double; single with station; under constr.		
Railways, other gauges, double; single with distance stone, do.		
Mineral line or tramway, K.M. Cutting with tunnel		
Contours with sub-features, Rocky slopes, Cliffs		
Sand features (1)flat, (2)sand-hill(permanent), (3)dunes(drafting)		
Towns or Villages, inhabited, deserted, Fort		
Hut, permanent, temporary, Tower, Antiquity		
Temple, Chhatra, Church, Mosque, Idgah, Tomb, Graves		
Lighthouse, Lightship, Buoy, lighted, unlighted, Anchorage		
Mine, View on hills, Grass, Scrub		
Palms; palms; other, Plantain, Conifer, Bamboo, Other trees		
Areas, cultivated, wooded, Surveyed tree		
Boundary, International		
state, demarcated, undemarcated		
district, subdivision, taluk or MAUK, forest		
Boundary pillars: surveyed, unlocated		
Heights, triangulated, station, point, approximate		200 200 200
Bench-mark, geodetic, tertiary, canal		BM 63.3 BM 63.3
Post office, Telegraph office, Overseas tank		
Rest house or inspection bungalow, Circuit house, Police station		
Camping ground, Forest, reserved, protected		RF RF
Speed names: administrative, locality or tribal		KOKRI NAGA
Hospital, Dispensary, Veterinary Hospital / Dispensary		
Aerodrome, Helipad, Tourist site		
Power line, with pylons surveyed, with poles unsurveyed		

NOTES

Heights and contours have not been shown.
Contours are approximate.
A relative height, e.g., at represents the approximate height, in metres, between the top and bottom of a steep slope.
Tanks, shown dry, in this area usually contain water from July to December.
Cultivation is periodic and dependent on rainfall.

COMPILATION INDEX

A. Surveyed during 1975-77. Updated for major details from 1:25,000 survey, during 1999-2000. Cultivation limit, open scrub limit and forest area are kept as per 1st Edition map 1972 on 1:50,000 scale.

Projection - UTM Datum - WGS 84

Magnetic Variation from True North about 1° West in 2005.
(Decreasing by about 1° annually).

1:50,000

500 m to 1 cm 2 cm to 1 km

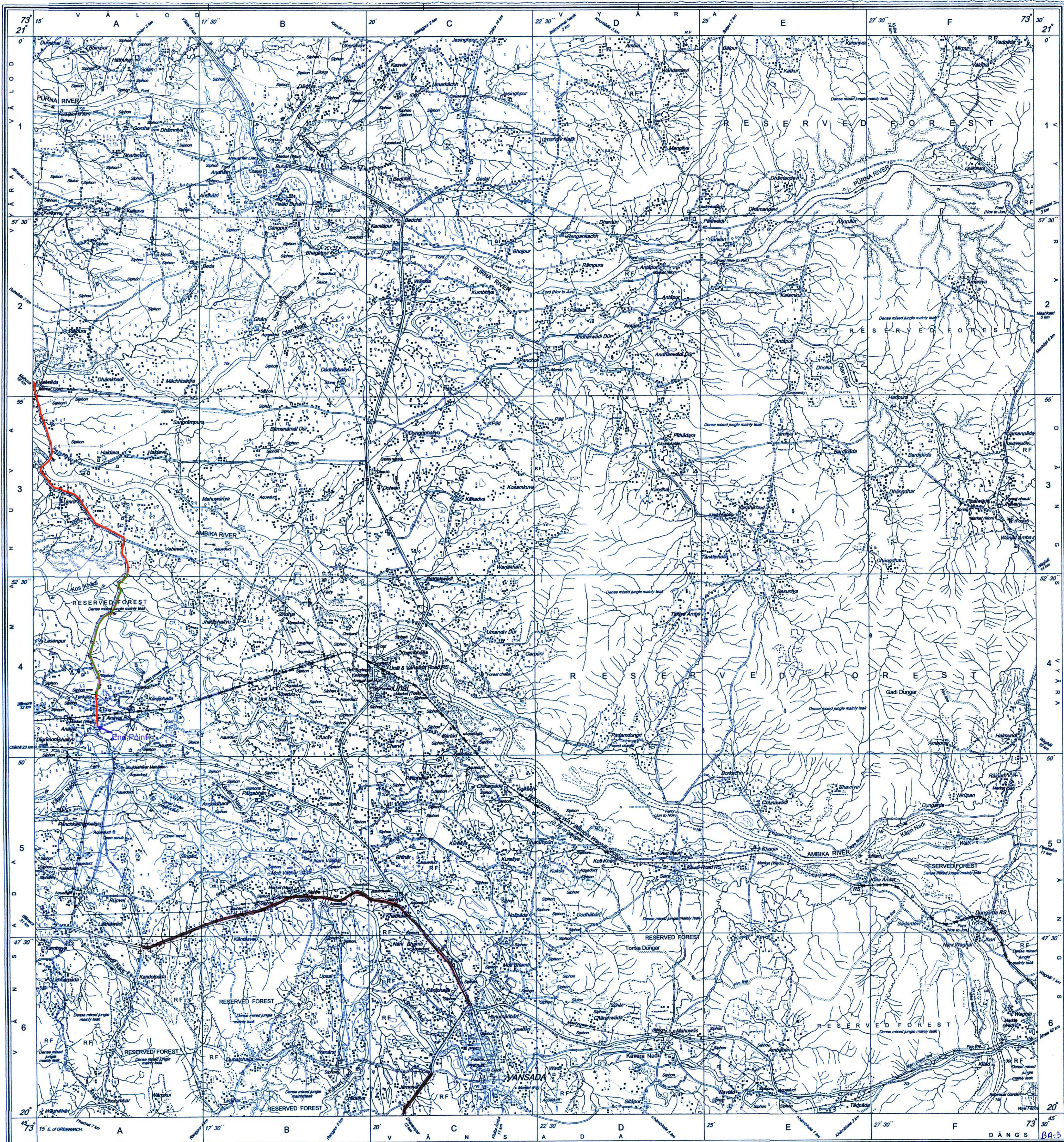
For further details about this map, please contact

Director
Gujarat, Daman & Diu Geo-Spatial Data Centre
Survey of India, Sector 10(A)
Gandhinagar.

WEBSITE - www.surveyofindia.gov.in

Reproduction in whole or part by any means is prohibited
without the written permission of Survey of India, the
National Mapping Agency.

GOVERNMENT OF INDIA COPYRIGHT, 2011.



REG. No.

-SPG 011 (Q&B) GDC-1/30/000

B111008/17
18.03.2014 He
सुरक्षा, सत व दंड / Gujarat, Daman & Diu
भूस्थानिक संकेत केंद्र / Geo Spatial Data Centre
सर्वेक्षण विभाग / Survey of India

भारत के नक्शाकार, सर्वे सुभा राव, बी.ई., के निदेशन में प्रकाशित,
Published under the direction of Swarna Subba Rao, B.E., Surveyor General of India,
Survey of India, Hathi Bakala Estate, Post Box No.37, Dehra Dun-248001 (Uttarakhand)
Department of Science & Technology, Government of India.

PRINTED AT THE SOUTHERN PRINTING GROUP OF SURVEY OF INDIA.

Proposed OFC route in RF Proposed OFC route

