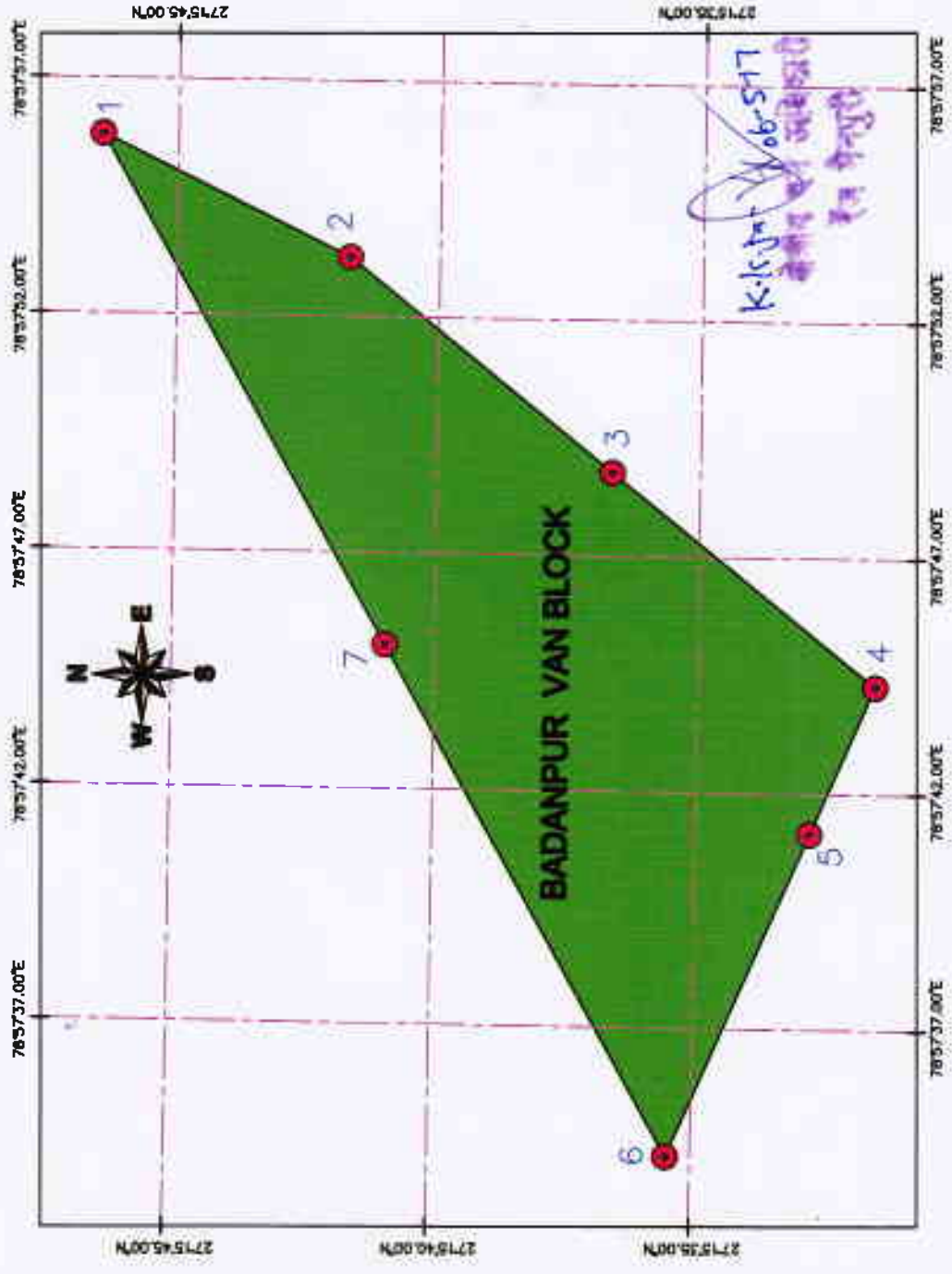


**GEO-REFERENCE MAP OF THE PROPOSED BADANPUR VAN BLOCK FOR COMPENSATORY AFFORESTATION(CA)
PLANTATION FOREST RANGE MAINPURI, TEHSIL- MAINPURI, FOREST DIVISION MAINPURI DISTRICT,**



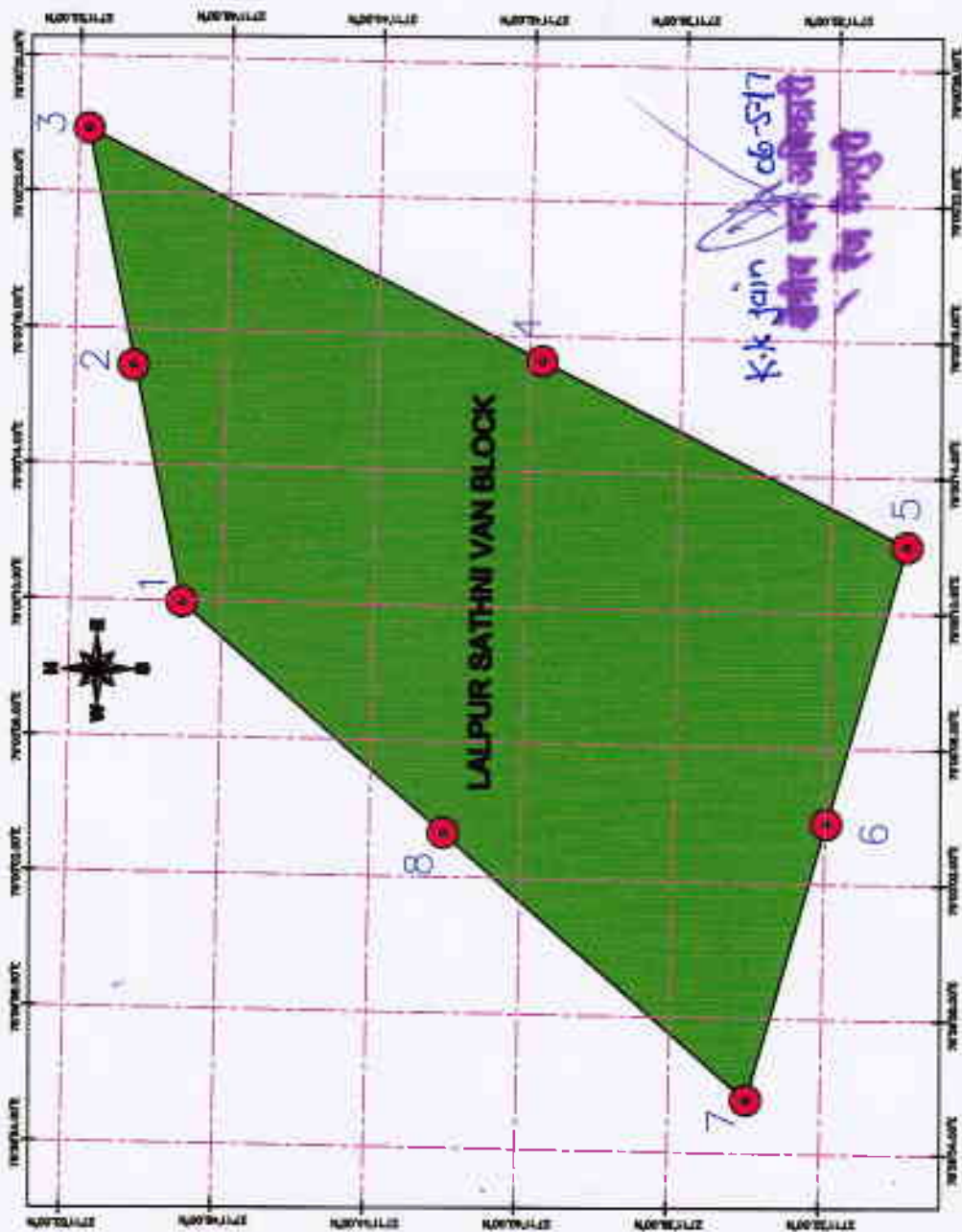
GEO REFERENCED CO-ORDINATES		
LOCATION	LONGITUDE	LATITUDE
1	78°57' 08.82"E	27°15' 48.45"N
2	78°57' 08.28"E	27°15' 41.71"N
3	78°57' 40.76"E	27°15' 38.97"N
4	78°57' 44.28"E	27°15' 31.85"N
5	78°57' 41.14"E	27°15' 32.89"N
6	78°57' 34.28"E	27°15' 38.47"N
7	78°57' 48.04"E	27°15' 40.89"N

1:20000

- GPS CO-ORDINATES
- BADANPUR VAN BLOCK

Kishor 06-5-17
S.K. Ambadulla
सिद्धि मिश्र
प्रमाणित करिके 15/11/17

GEO-REFERENCE MAP OF THE PROPOSED LALPUR SATHNI VAN BLOCK FOR COMPENSATORY AFFORESTATION(CA) PLANTATION FOREST RANGE MANPURI, TERSEL- MANPURI, FOREST DIVISION MANPURI DISTRICT,



LOCATION	LONGITUDE	LATITUDE
1	79°00' 08.96"E	27°11' 48.06"N
2	79°00' 16.91"E	27°11' 50.45"N
3	79°00' 23.86"E	27°11' 51.73"N
4	79°00' 17.26"E	27°11' 58.67"N
5	79°00' 11.97"E	27°11' 29.96"N
6	79°00' 30.77"E	27°11' 31.98"N
7	79°00' 58.57"E	27°11' 33.98"N
8	79°00' 30.30"E	27°11' 42.06"N

LEGEND



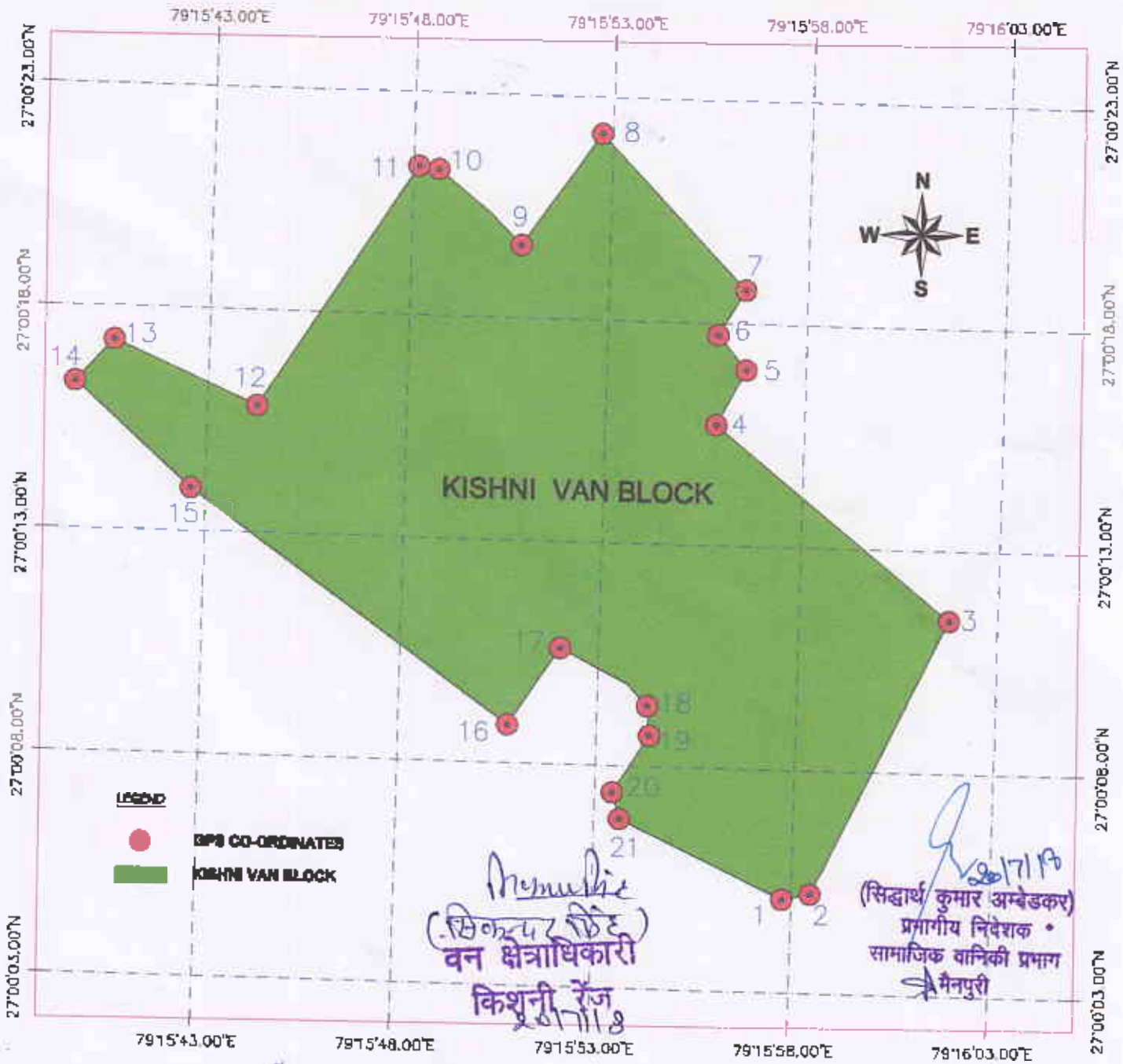
GPS CO-ORDINATES



LALPUR SATHNI VAN BLOCK

Handwritten notes in blue ink:
 - Signature
 - '06-517'
 - 'S.K. Ambedkar'
 - '06-517'

GEO-REFERENCE MAP OF THE PROPOSED KISHNI VAN BLOCK FOR COMPENSATORY AFFORESTATION(CA) PLANTATION FOREST RANGE KISHNI, TEHSIL- KISHNI, FOREST DIVISION MAINPURI DISTRICT,



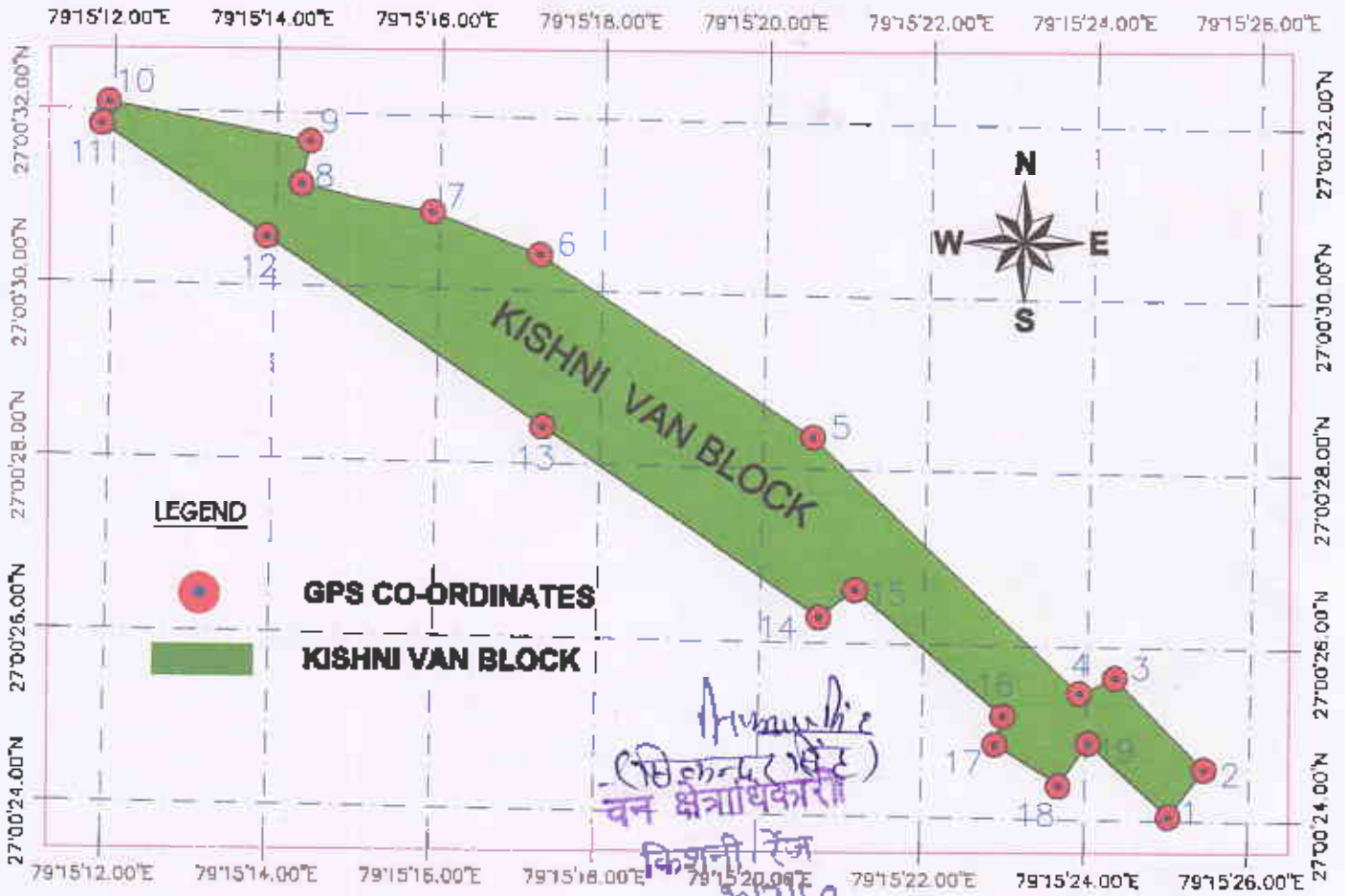
Munshi
 (सिन्धु टि.ए.)
 वन क्षेत्राधिकारी
 किशुनी रेंज
 20/11/18

20/11/18
 (सिद्धार्थ कुमार अम्बेडकर)
 प्रांतीय निदेशक
 सामाजिक वानिकी प्रभाग
 मैनपुरी

GEO REFERENCED CO-ORDINATES

LOCATION	LONGITUDE	LATITUDE	LOCATION	LONGITUDE	LATITUDE	LOCATION	LONGITUDE	LATITUDE
1	73°15' 57.76"E	27°00' 05.09"N	8	73°15' 52.72"E	27°00' 22.18"N	15	73°15' 42.62"E	27°00' 13.85"N
2	73°15' 58.47"E	27°00' 06.22"N	9	73°15' 50.75"E	27°00' 18.63"N	16	73°15' 50.74"E	27°00' 08.84"N
3	73°16' 01.78"E	27°00' 11.43"N	10	73°15' 48.63"E	27°00' 21.28"N	17	73°15' 52.01"E	27°00' 10.80"N
4	73°15' 55.77"E	27°00' 16.71"N	11	73°16' 48.12"E	27°00' 21.34"N	18	73°15' 54.24"E	27°00' 09.35"N
5	73°15' 58.48"E	27°00' 18.98"N	12	73°15' 44.23"E	27°00' 15.84"N	19	73°15' 54.31"E	27°00' 08.69"N
6	73°15' 56.78"E	27°00' 17.74"N	13	73°15' 40.60"E	27°00' 17.24"N	20	73°15' 53.42"E	27°00' 07.38"N
7	73°15' 58.43"E	27°00' 18.76"N	14	73°15' 38.63"E	27°00' 18.28"N	21	73°15' 53.81"E	27°00' 08.80"N

GEO-REFERENCE MAP OF THE PROPOSED KISHNI VAN BLOCK FOR COMPENSATORY AFFORESTATION(CA) PLANTATION FOREST RANGE KISHNI, TEHSIL- KISHNI, FOREST DIVISION MAINPURI DISTRICT,

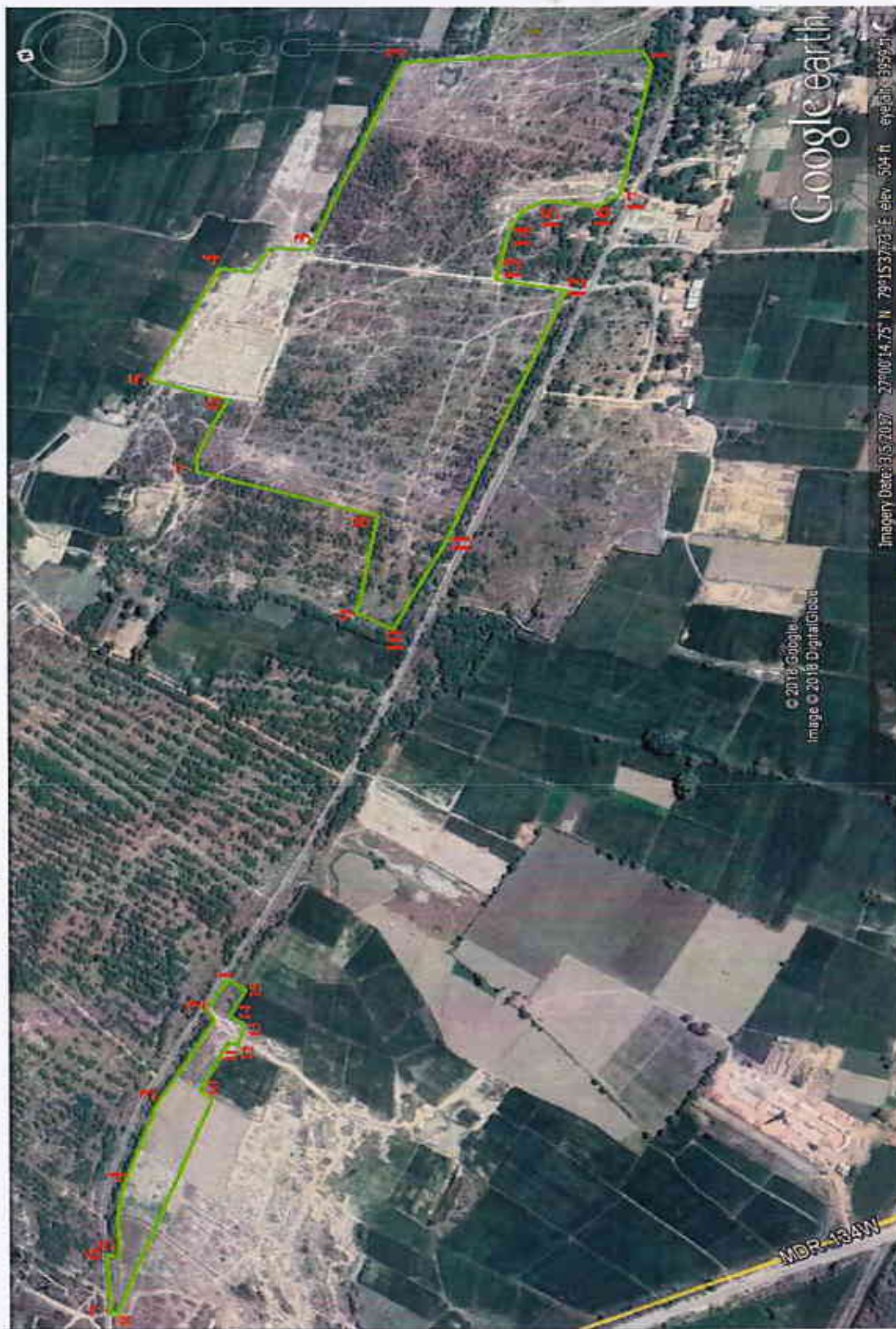


GEO REFERENCED CO-ORDINATES

LOCATION	LONGITUDE	LATITUDE	LOCATION	LONGITUDE	LATITUDE	LOCATION	LONGITUDE	LATITUDE
1	73°15' 25.85"E	27°00' 24.04"N	7	73°15' 18.27"E	27°00' 30.88"N	13	73°15' 17.75"E	27°00' 28.42"N
2	73°15' 28.40"E	27°00' 24.59"N	8	73°15' 14.57"E	27°00' 31.18"N	14	73°15' 21.37"E	27°00' 28.28"N
3	73°15' 26.23"E	27°00' 26.64"N	9	73°15' 14.67"E	27°00' 31.67"N	15	73°15' 21.83"E	27°00' 28.61"N
4	73°15' 24.76"E	27°00' 25.46"N	10	73°15' 12.05"E	27°00' 32.09"N	16	73°15' 23.78"E	27°00' 25.18"N
5	73°15' 21.25"E	27°00' 28.38"N	11	73°15' 11.96"E	27°00' 31.83"N	17	73°15' 23.68"E	27°00' 24.85"N
6	73°15' 17.68"E	27°00' 30.41"N	12	73°15' 14.12"E	27°00' 30.56"N	18	73°15' 24.52"E	27°00' 24.40"N
19	73°15' 24.88"E	27°00' 24.88"N						

20/11/18
 (सिद्धार्थ कुमार अम्बेडकर)
 प्रशासकीय निदेशक
 सामाजिक धानिकी एकादश
 → मैन्पुरी

Demarcation Map of the Proposed Kishni Van Block for Compensatory Afforestation (CA)



1-27	0,5.00" N,	79 15,57.80" E
2-27	0,11.36" N,	79 16,1.72" E
3-27	0,15.75" N,	79 15,55.85" E
4-27	0,18.62" N,	79 15,56.35" E
5-27	0,22.12" N,	79 15,52.69" E
6-27	0,19.68" N,	79 15,50.74" E
7-27	0,21.37" N,	79 15,48.25" E
8-27	0,15.84" N,	79 15,44.26" E
9-27	0,17.16" N,	79 15,40.64" E
10-27	0,16.26" N,	79 15,39.65" E
11-27	0,13.91" N,	79 15,42.66" E
12-27	0,8.81" N,	79 15,50.75" E
13-27	0,10.57" N,	79 15,52.08" E
14-27	0,9.62" N,	79 15,54.00" E
15-27	0,8.57" N,	79 15,54.26" E
16-27	0,7.41" N,	79 15,33.46" E
17-27	0,6.79" N,	79 15,53.68" E

1-27	0,24.57" N,	79 15,26.48" E
2-27	0,25.64" N,	79 15,25.18" E
3-27	0,25.45" N,	79 15,24.77" E
4-27	0,28.34" N,	79 15,21.29" E
5-27	0,30.40" N,	79 15,17.67" E
6-27	0,31.17" N,	79 15,14.58" E
7-27	0,31.64" N,	79 15,14.69" E
8-27	0,32.06" N,	79 15,12.06" E
9-27	0,31.8" N,	79 15,11.99" E
10-27	0,26.26" N,	79 15,21.39" E
11-27	0,26.61" N,	79 15,21.83" E
12-27	0,24.84" N,	79 15,23.70" E
13-27	0,24.40" N,	79 15,24.53" E
14-27	0,24.83" N,	79 15,24.89" E
15-27	0,24.02" N,	79 15,25.97" E

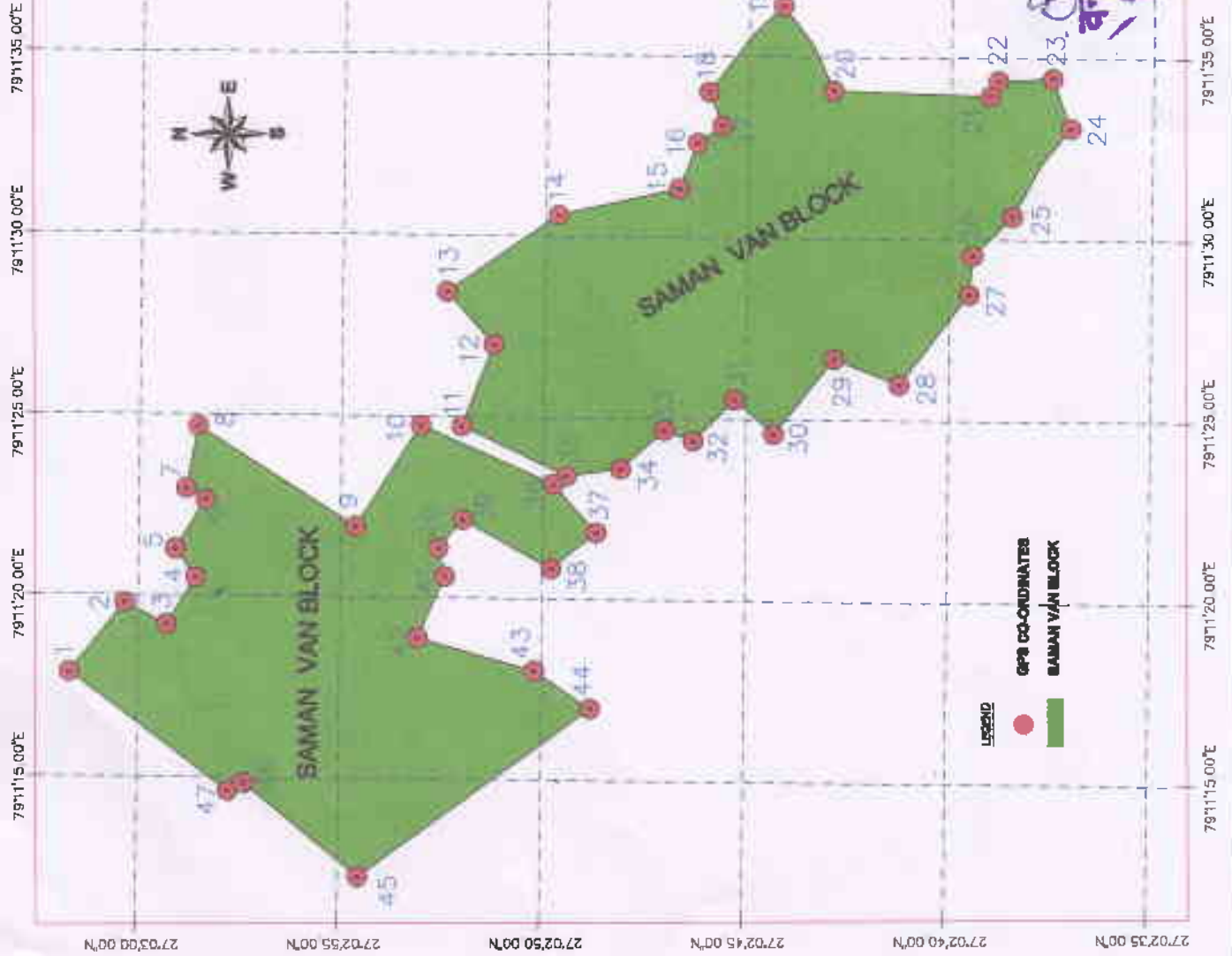
Plantation area Demarcation




 (सिद्धांत कुमार अन्वडकर)
 प्रशासक •
 सामाजिक वानिकी प्रभाग
 वन क्षेत्राधिकारी
 किशनी रेंज
 20/11/18

Imagery Date: 3/5/2017 27°00'14.75" N, 79°15'37.73" E, elev. 504 ft. 
 © 2018 Google
 Image © 2018 DigitalGlobe

**GEO-REFERENCE MAP OF THE PROPOSED KISHNI SAMAN VAN BLOCK FOR COMPENSATORY AFFORESTATION(CA)
PLANTATION FOREST RANGE KISHNI, TEHSIL- KISHNI, FOREST DIVISION MAINPURI DISTRICT,**



GEO REFERENCED CO-ORDINATES							
LOCATION	LONGITUDE	LATITUDE	LOCATION	LONGITUDE	LATITUDE	LOCATION	LATITUDE
1	73°11' 17.86"E	27°03' 01.67"N	25	73°11' 30.85"E	27°02' 38.46"N		
2	73°11' 19.78"E	27°03' 00.32"N	26	73°11' 29.56"E	27°02' 39.43"N		
3	73°11' 19.20"E	27°02' 59.28"N	27	73°11' 28.49"E	27°02' 38.81"N		
4	73°11' 20.49"E	27°02' 59.07"N	28	73°11' 25.99"E	27°02' 41.22"N		
5	73°11' 21.28"E	27°02' 59.09"N	29	73°11' 28.68"E	27°02' 42.84"N		
6	73°11' 22.04"E	27°02' 58.34"N	30	73°11' 24.60"E	27°02' 44.31"N		
7	73°11' 22.80"E	27°02' 59.85"N	31	73°11' 26.54"E	27°02' 45.28"N		
8	73°11' 24.87"E	27°02' 58.64"N	32	73°11' 24.40"E	27°02' 46.30"N		
9	73°11' 21.04"E	27°02' 54.82"N	33	73°11' 24.88"E	27°02' 47.01"N		
10	73°11' 24.76"E	27°02' 53.03"N	34	73°11' 23.60"E	27°02' 48.05"N		
11	73°11' 24.76"E	27°02' 52.02"N	35	73°11' 23.38"E	27°02' 49.42"N		
12	73°11' 28.98"E	27°02' 51.25"N	36	73°11' 23.16"E	27°02' 49.74"N		
13	73°11' 28.44"E	27°02' 52.42"N	37	73°11' 21.85"E	27°02' 48.67"N		
14	73°11' 30.58"E	27°02' 49.88"N	38	73°11' 20.85"E	27°02' 49.79"N		
15	73°11' 31.34"E	27°02' 49.71"N	39	73°11' 22.16"E	27°02' 51.88"N		
16	73°11' 32.60"E	27°02' 49.28"N	40	73°11' 21.37"E	27°02' 52.86"N		
17	73°11' 33.00"E	27°02' 49.85"N	41	73°11' 20.50"E	27°02' 52.40"N		
18	73°11' 34.01"E	27°02' 45.99"N	42	73°11' 18.85"E	27°02' 53.05"N		
19	73°11' 38.41"E	27°02' 44.16"N	43	73°11' 18.02"E	27°02' 50.17"N		
20	73°11' 34.08"E	27°02' 42.92"N	44	73°11' 18.98"E	27°02' 48.78"N		
21	73°11' 33.99"E	27°02' 39.03"N	45	73°11' 12.28"E	27°02' 54.49"N		
22	73°11' 34.30"E	27°02' 38.84"N	46	73°11' 14.84"E	27°02' 57.33"N		
23	73°11' 34.45"E	27°02' 37.49"N	47	73°11' 14.82"E	27°02' 57.72"N		
24	73°11' 38.08"E	27°02' 37.02"N					

20/7/18
 (सिद्धार्थ कुमार अम्बेडकर)
 प्रशासनिक निदेशक -
 सामाजिक वनिकी प्रभाग
 मैमपुरी

20/7/18
 वन क्षेत्राधिकारी
 कियनी रेंज 20/7/18

Demarcation Map of the Proposed Saman Van Block for Compensatory Afforestation (CA)



Plantation area Demarcation

महेश्वरी
 सिद्धार्थ कुमार अम्बेडकर
 वन क्षेत्राधिकारी
 किसानी रेजु
 20/11/18

26/1/19
 सिद्धार्थ कुमार अम्बेडकर
 प्रमोदीय निदेशक
 सामाजिक मानिकी प्रभाग
 नैसपुरी

- 1-27 2, 51.98" N, 79 11, 24.75" E
- 2-27 2, 51.21" N, 79 11, 26.97" E
- 3-27 2, 52.36" N, 79 11, 28.43" E
- 4-27 2, 46.70" N, 79 11, 31.38" E
- 5-27 2, 45.67" N, 79 11, 33.06" E
- 6-27 2, 45.96" N, 79 11, 34.05" E
- 7-27 2, 44.15" N, 79 11, 36.39" E
- 8-27 2, 42.84" N, 79 11, 34.09" E
- 9-27 2, 38.96" N, 79 11, 33.97" E
- 10-27 2, 37.49" N, 79 11, 34.46" E
- 11-27 2, 37.07" N, 79 11, 33.11" E
- 12-27 2, 39.38" N, 79 11, 29.54" E
- 13-27 2, 41.16" N, 79 11, 25.98" E
- 14-27 2, 44.33" N, 79 11, 24.63" E
- 15-27 2, 49.26" N, 79 11, 23.33" E

- 1-27 2, 52.97" N, 79 11, 24.70" E
- 2-27 2, 54.61" N, 79 11, 21.96" E
- 3-27 2, 58.49" N, 79 11, 24.67" E
- 4-27 2, 59.30" N, 79 11, 19.21" E
- 5-27 3, 0.32" N, 79 11, 19.77" E
- 6-27 3, 1.68" N, 79 11, 17.89" E
- 7-27 2, 54.48" N, 79 11, 12.33" E
- 8-27 2, 48.79" N, 79 11, 16.98" E
- 9-27 2, 53.07" N, 79 11, 18.89" E
- 10-27 2, 52.56" N, 79 11, 21.32" E
- 11-27 2, 51.85" N, 79 11, 22.14" E
- 12-27 2, 49.73" N, 79 11, 20.86" E
- 13-27 2, 48.73" N, 79 11, 21.83" E