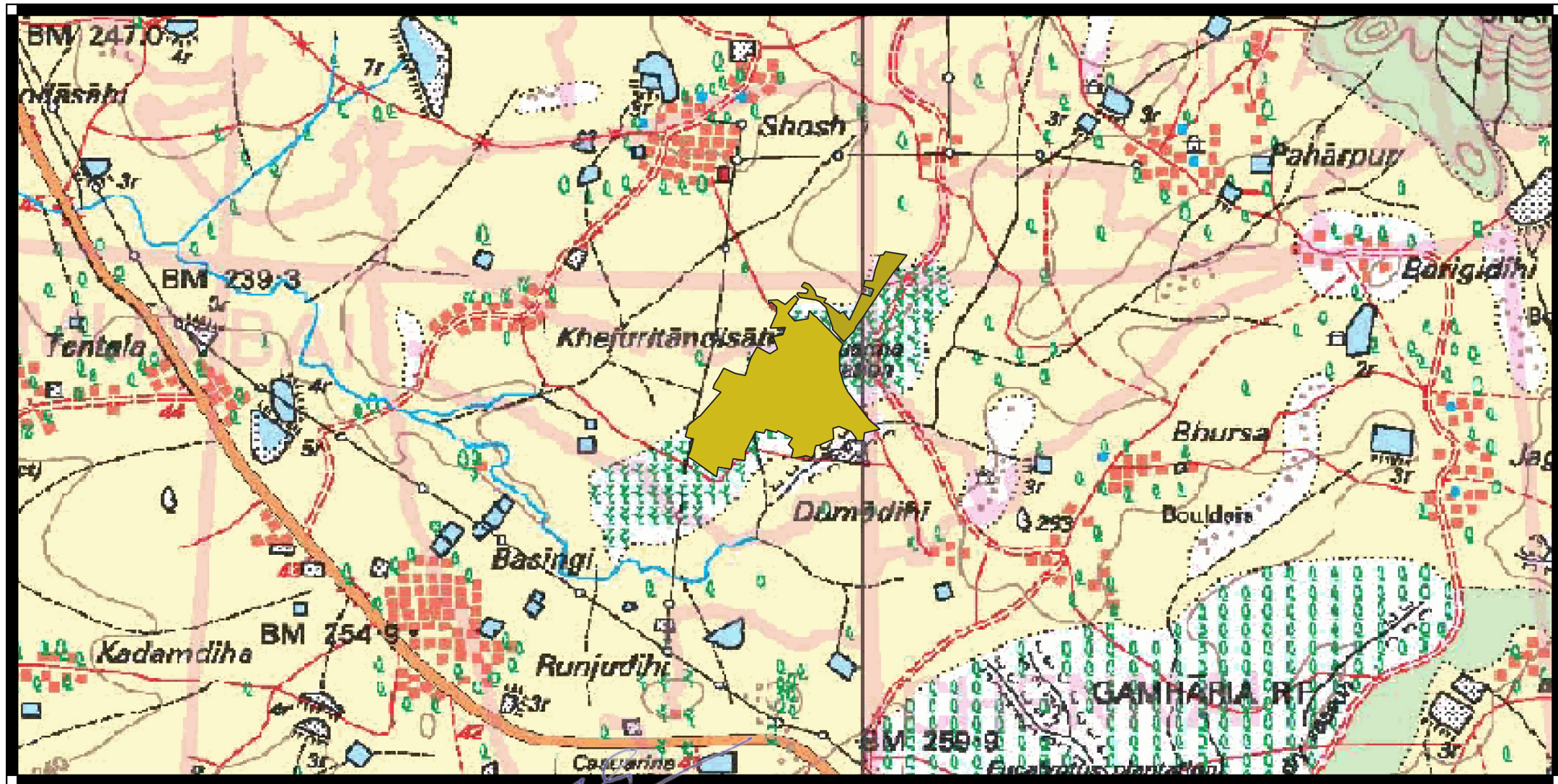


TOPOSHEET SURVEYED SHOWING DEGRADED FOREST LAND (DLC) FOR COMPENSATORY AFFORESTATION IN VILLAGE SOSO UNDER BAHALDA TAHASIL IN MAYURBHANJ DISTRICT OF D.F.O, RAIRANGPUR AGAINST DIVERSION OF 17.795HA. FOREST LAND FOR REHABILITATION AND UPGRADATION TO FOUR LANEING OF 7.6 KM STRETCH NH-49 IN THE STATE OF ODISHA



PROJECT DIRECTOR,
NATIONAL HIGHWAYS AUTHORITY OF INDIA
PIU-CHANDIKHOLE

Divisional Forest Officer
Rairangpur Division

LEGEND

- Patch_1
- Patch_2