

Scale 1:50,000

Map of Gujarat showing the locations of the eight stations. The stations are located at the intersections of the grid lines. The stations are: G43S10 (45D/10) in the top-left cell, G43S14 (45D/14) in the top-middle cell, G43T2 (45H/2) in the top-right cell, G43S11 (45D/11) in the middle-left cell, G43S15 (45D/15) in the center cell, G43T3 (45H/3) in the middle-right cell, G43S12 (45D/12) in the bottom-left cell, G43S16 (45D/16) in the bottom-middle cell, and G43T4 (45H/4) in the bottom-right cell. The map also shows the borders of Gujarat and its neighboring states: Rajasthan to the north and east, and Maharashtra to the west. The city of Gandhinagar is marked in the center of the state.

1 Mehsāna, GUJARĀT.  
2 Disputed, GUJARĀT, RĀJASTHĀN

भारतीय सर्वेक्षण विभाग

**SURVEY OF INDIA**

1st Edition 2011 ~~678910 073~~ Price ~~Rs. 70/-~~

### CONVENTIONAL SYMBOLS



## REFERENCE

#### REFERENCE

NH 14 National Highway No. 14

## NOTES

Heights are in metres and above mean sea level.  
 Contours are approximate.  
 A relative height, e.g.  $\delta x$ , represents the approximate height, in metres, between the top and bottom of a steep slope.  
 A relative height, e.g.  $\delta x$ , against a well, indicates its total depth in metres.

## COMPILATION INDEX



Projection - UTM Datum - WGS 84

Magnetic Variation from True North about  $0^\circ$  in 2005.

500 m to 1 cm      1:50 000      2 cm to 1 km

1

*[Signature]*

for further details about this map, please

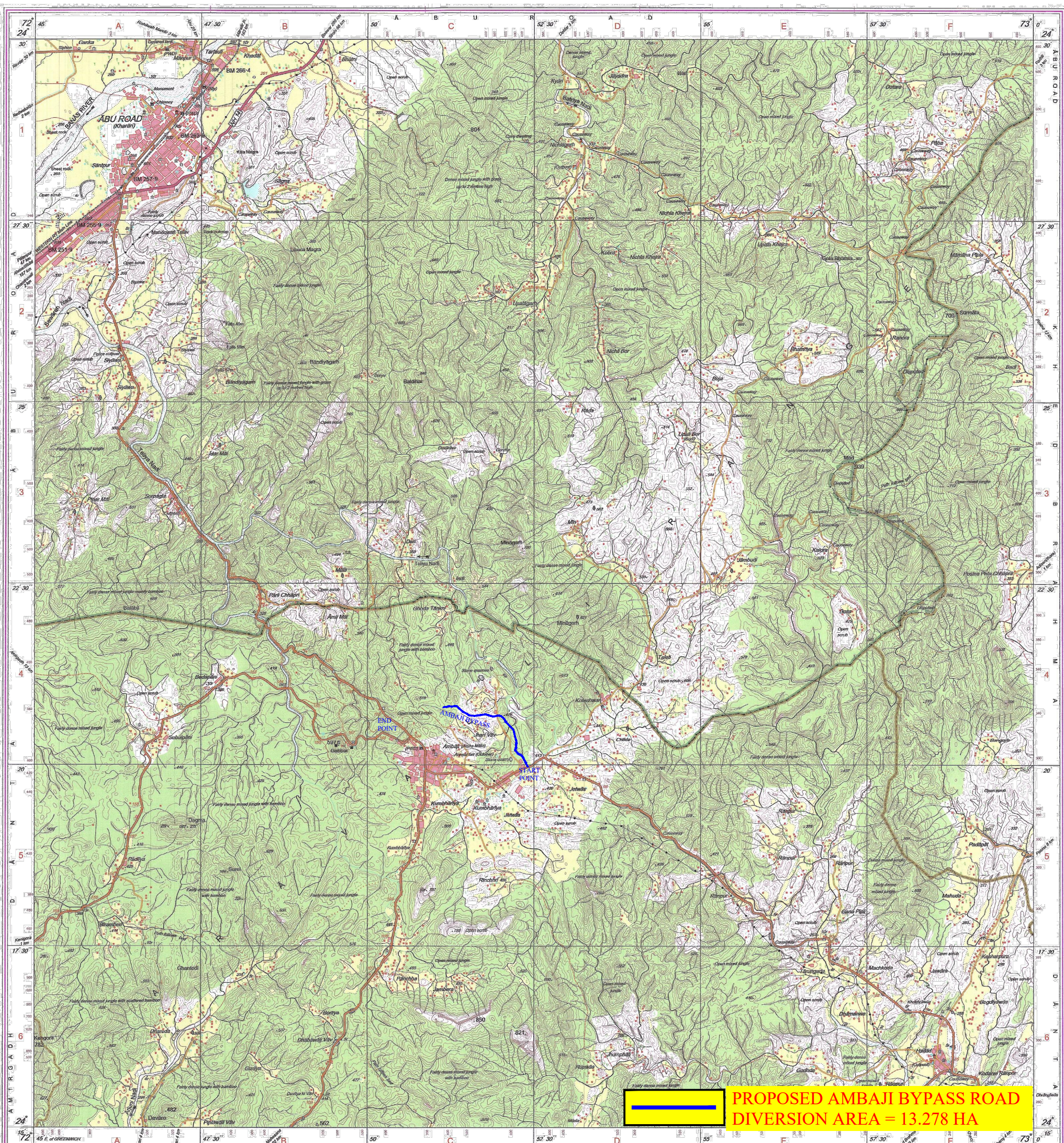
Director

Survey of India, Sector -10

**Gandhinagar.**

[illegible]

Age group	Percentage of respondents
18-29	65
30-49	75
50-69	85
70+	88



**PROPOSED AMBAJI BYPASS ROAD  
DIVERSION AREA = 13.278 HA**