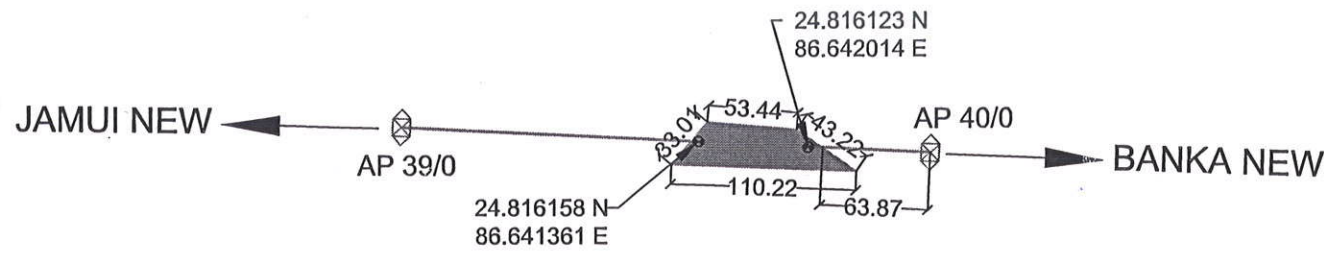


86°38'15"E

86°38'30"E

86°38'45"E

SKETCH AND DGPS COORDINATES OF FOREST LAND TO BE DIVERTED FOR CONSTRUCTION OF 132 KV D/C JAMUI (NEW) - BANKA (NEW) TRANSMISSION LINE



24°49'00"N

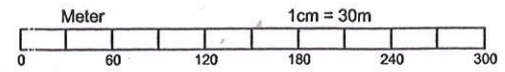
24°49'00"N

LEGEND

DESCRIPTION	SYMBOLS
1. DGPS POINT	
2. METAL ROAD	
3. FOREST LAND	
4. TRANSMISSION TOWER	
5. TRANSMISSION LINE	

LAND AREA: (33.01X53.44X43.22X110.22) m
 = 1998 Sq.m
 =0.1998 ha.

Assistant Executive Engineer
Transmission Sub-division, Banka



86°38'15"E

86°38'30"E

86°38'45"E

24°48'45"N

24°48'45"N

86°41'15"E

86°41'30"E

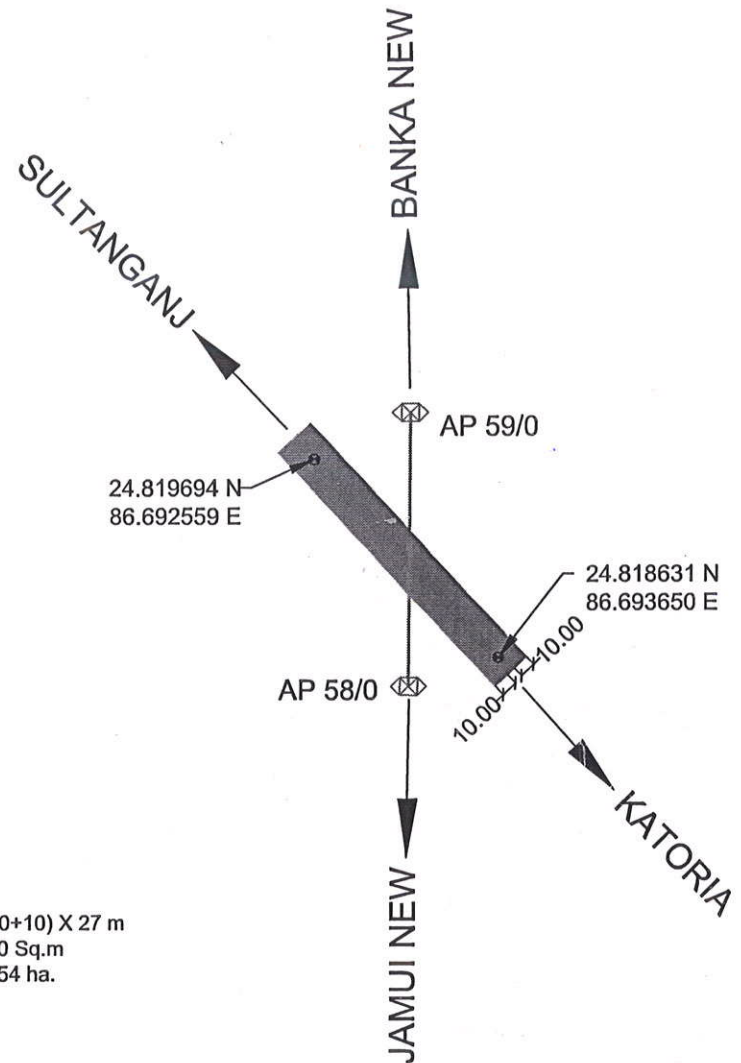
86°41'45"E

SKETCH AND DGPS COORDINATES OF FOREST LAND TO BE DIVERTED FOR CONSTRUCTION OF 132 KV D/C JAMUI (NEW) - BANKA (NEW) TRANSMISSION LINE



24°49'15"N

24°49'15"N



24°49'00"N

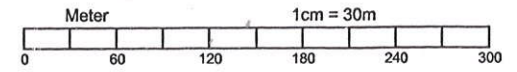
24°49'00"N

LEGEND

DESCRIPTION	SYMBOLS
1. DGPS POINT	
2. METAL ROAD	
3. FOREST LAND	
4. TRANSMISSION TOWER	
5. TRANSMISSION LINE	

LAND AREA: (10+10) X 27 m
 = 540 Sq.m
 = 0.054 ha.

Assistant Executive Engineer
 Transmission Sub-division, Banka



86°41'15"E

86°41'30"E

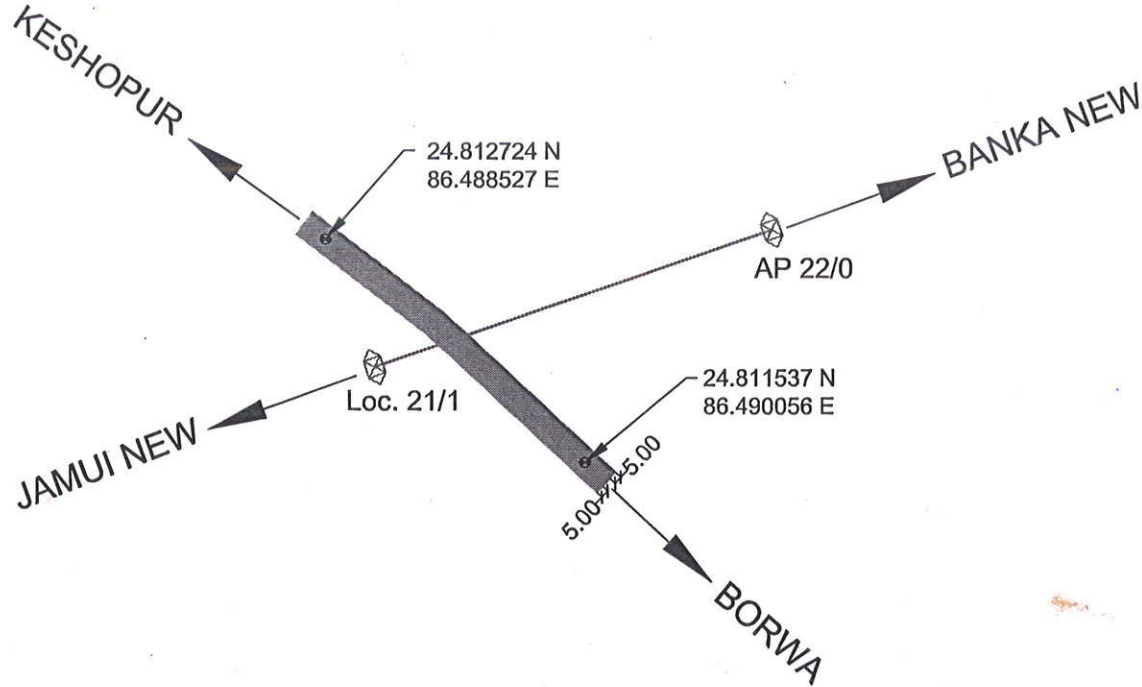
86°41'45"E

86°29'15"E

86°29'30"E

86°29'45"E

SKETCH AND DGPS COORDINATES OF FOREST LAND TO BE DIVERTED FOR CONSTRUCTION OF 132 KV D/C JAMUI (NEW) - BANKA (NEW) TRANSMISSION LINE



24°48'45"N

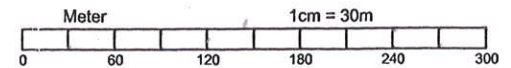
24°48'45"N

LEGEND

DESCRIPTION	SYMBOLS
1. DGPS POINT	
2. METAL ROAD	
3. FOREST LAND	
4. TRANSMISSION TOWER	
5. TRANSMISSION LINE	

LAND AREA: (5+5) X 27 m
 = 270 Sq.m
 =0.027 ha.

Assistant Executive Engineer
 Transmission Sub-division, Banka



24°48'30"N

24°48'30"N

86°29'15"E

86°29'30"E

86°29'45"E