

SIDHI DISTRICT.  
MIRZAPUR DISTRICT.

Surveyed 1966-67

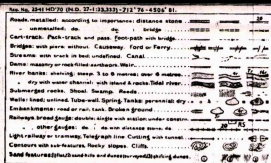
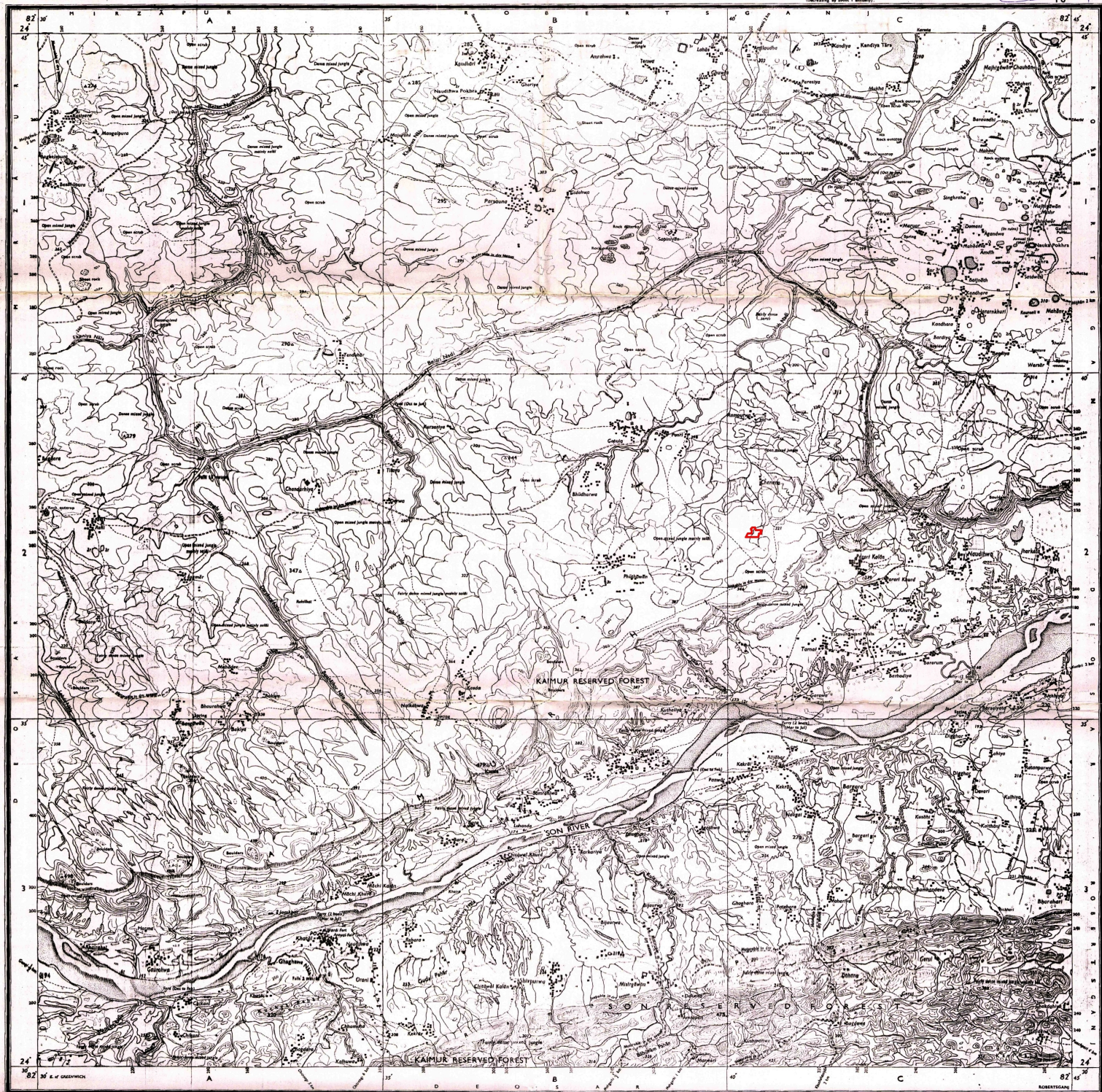
# MADHYA PRADESH UTTAR PRADESH

FIRST EDITION

Magnetic Variation from True North about 4° West in 1970.  
(Changing at about 1° Annually)

INDIA  
REFER TO THIS MAP AS - I:50,000  
SHEET 63 L/10 FIRST EDITION

No. 63 L/10



Index to Sheet		
43 1/2	43 1/2	43 1/2
43 1/2	43 1/2	43 1/2
43 1/2	43 1/2	43 1/2

Published under the authority of the Survey of India, Dehra Dun, U.P. (India) by the Survey of India, Dehra Dun, U.P. (India).

1:50,000

HEIGHTS & CONTOURS IN METRES  
CONTOUR INTERVAL 20 METRES

Water features are shown in blue where they are permanent. Coloured areas are shown in yellow. The material boundaries of areas of Reserved or Protected Forests are shown by green lines.

Contours are shown in brown. A solid line represents the approximate height, in metres, between the top and bottom of a range. Shaded areas are shown in green. Shaded areas and other vegetation are in green, but prominent surveyed trees are in black.

Administrative Index



Symbol		Feature
[Symbol]	[Symbol]	State boundary
[Symbol]	[Symbol]	District boundary
[Symbol]	[Symbol]	Block boundary
[Symbol]	[Symbol]	Village boundary
[Symbol]	[Symbol]	Temple
[Symbol]	[Symbol]	Church
[Symbol]	[Symbol]	Mosque
[Symbol]	[Symbol]	High tank
[Symbol]	[Symbol]	Small tank
[Symbol]	[Symbol]	Well
[Symbol]	[Symbol]	Spring
[Symbol]	[Symbol]	Waterfall
[Symbol]	[Symbol]	Stream
[Symbol]	[Symbol]	River
[Symbol]	[Symbol]	Canal
[Symbol]	[Symbol]	Drain
[Symbol]	[Symbol]	Field
[Symbol]	[Symbol]	Forest
[Symbol]	[Symbol]	Uncultivated land
[Symbol]	[Symbol]	Barren land
[Symbol]	[Symbol]	Settlement
[Symbol]	[Symbol]	Industrial area
[Symbol]	[Symbol]	Commercial area
[Symbol]	[Symbol]	Residential area
[Symbol]	[Symbol]	Public building
[Symbol]	[Symbol]	Religious building
[Symbol]	[Symbol]	Health building
[Symbol]	[Symbol]	Police station
[Symbol]	[Symbol]	Post office
[Symbol]	[Symbol]	Telephone office
[Symbol]	[Symbol]	Railway station
[Symbol]	[Symbol]	Bus stop
[Symbol]	[Symbol]	Motor vehicle
[Symbol]	[Symbol]	Tram
[Symbol]	[Symbol]	Ship
[Symbol]	[Symbol]	Boat
[Symbol]	[Symbol]	Helicopter
[Symbol]	[Symbol]	Jet
[Symbol]	[Symbol]	Missile
[Symbol]	[Symbol]	Ball
[Symbol]	[Symbol]	Arrow
[Symbol]	[Symbol]	Star
[Symbol]	[Symbol]	Circle
[Symbol]	[Symbol]	Square
[Symbol]	[Symbol]	Triangle
[Symbol]	[Symbol]	Pentagon
[Symbol]	[Symbol]	Hexagon
[Symbol]	[Symbol]	Heptagon
[Symbol]	[Symbol]	Octagon
[Symbol]	[Symbol]	Nonagon
[Symbol]	[Symbol]	Decagon
[Symbol]	[Symbol]	Undecagon
[Symbol]	[Symbol]	Dodecagon
[Symbol]	[Symbol]	Tridecagon
[Symbol]	[Symbol]	Tetradecagon
[Symbol]	[Symbol]	Pentadecagon
[Symbol]	[Symbol]	Hexadecagon
[Symbol]	[Symbol]	Heptadecagon
[Symbol]	[Symbol]	Octadecagon
[Symbol]	[Symbol]	Enneadecagon
[Symbol]	[Symbol]	triacontagon
[Symbol]	[Symbol]	pentagon
[Symbol]	[Symbol]	hexagon
[Symbol]	[Symbol]	heptagon
[Symbol]	[Symbol]	octagon
[Symbol]	[Symbol]	nonagon
[Symbol]	[Symbol]	decagon
[Symbol]	[Symbol]	undecagon
[Symbol]	[Symbol]	dodecagon
[Symbol]	[Symbol]	tridecagon
[Symbol]	[Symbol]	tetradecagon
[Symbol]	[Symbol]	pentadecagon
[Symbol]	[Symbol]	hexadecagon
[Symbol]	[Symbol]	heptadecagon
[Symbol]	[Symbol]	octadecagon
[Symbol]	[Symbol]	enneadecagon
[Symbol]	[Symbol]	triacontagon

REFER TO THIS MAP AS - I:50,000  
SHEET 63 L/10 FIRST EDITION

INDIA

GOVERNMENT OF INDIA, COPYRIGHT, 1970.