



KARNATAKA

FIRST EDITION

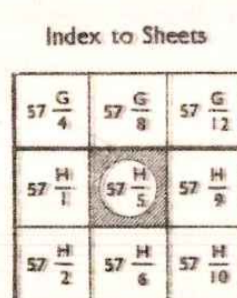
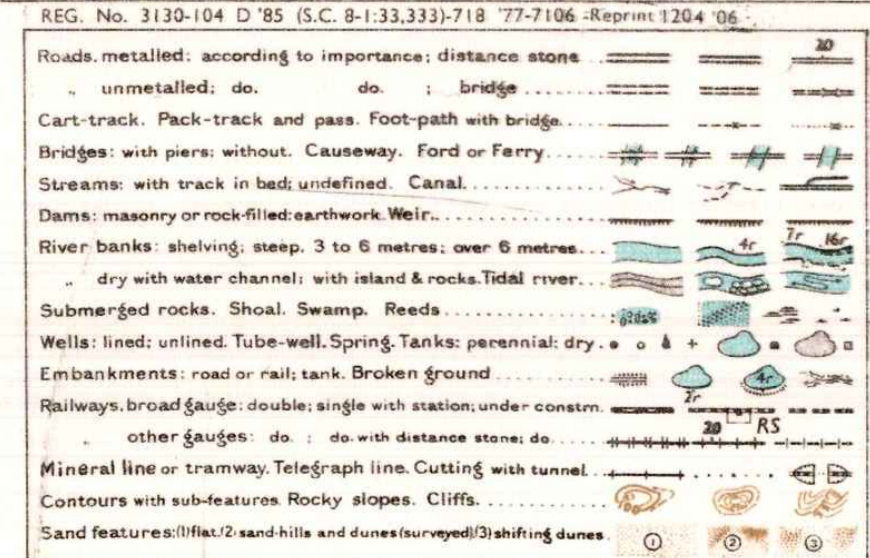
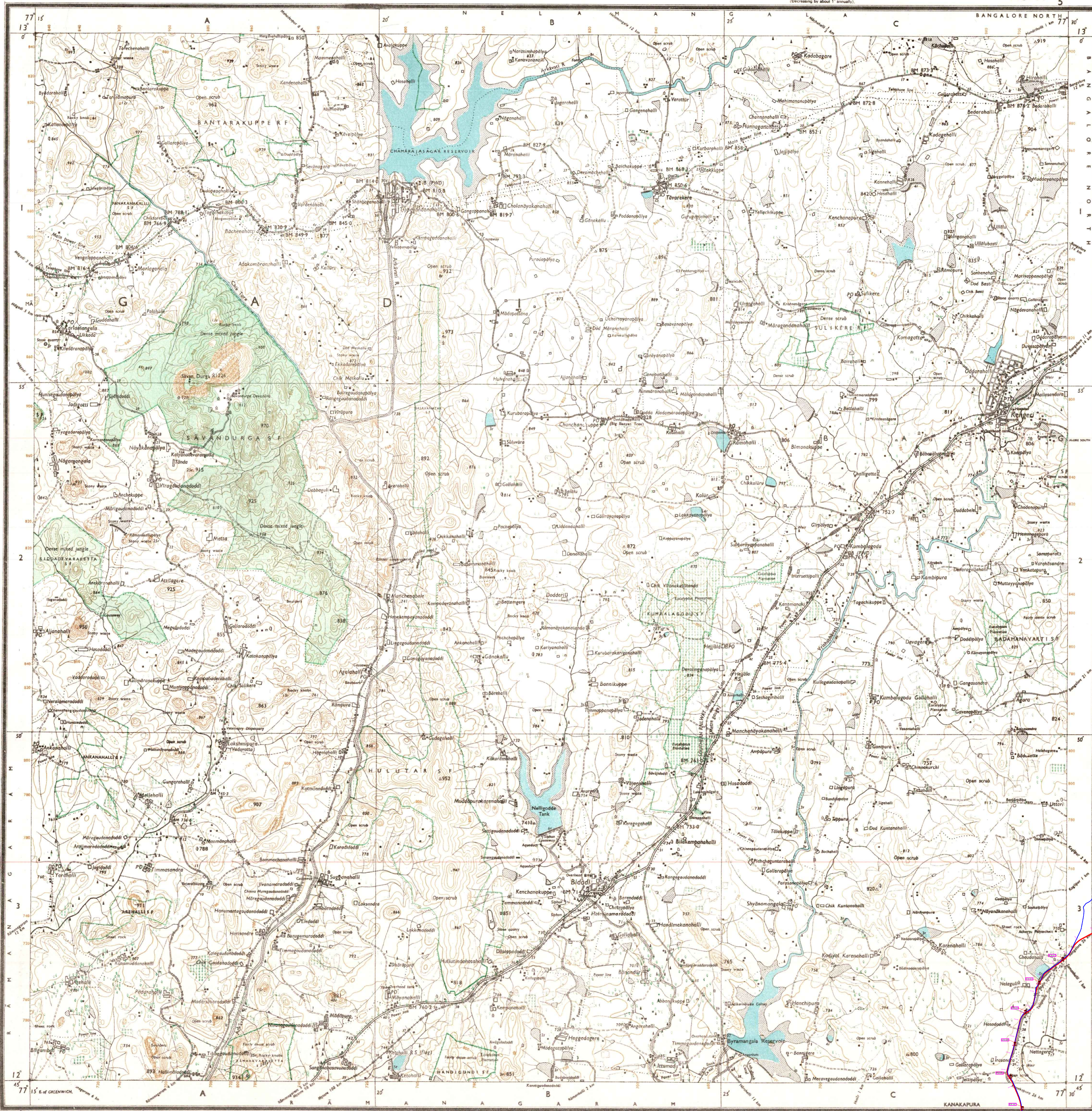
INDIA
REFER TO THIS MAP AS:- I:50,000
SHEET 57 H/5 FIRST EDITION

BANGALORE DISTRICT.

Surveyed 1970-71.

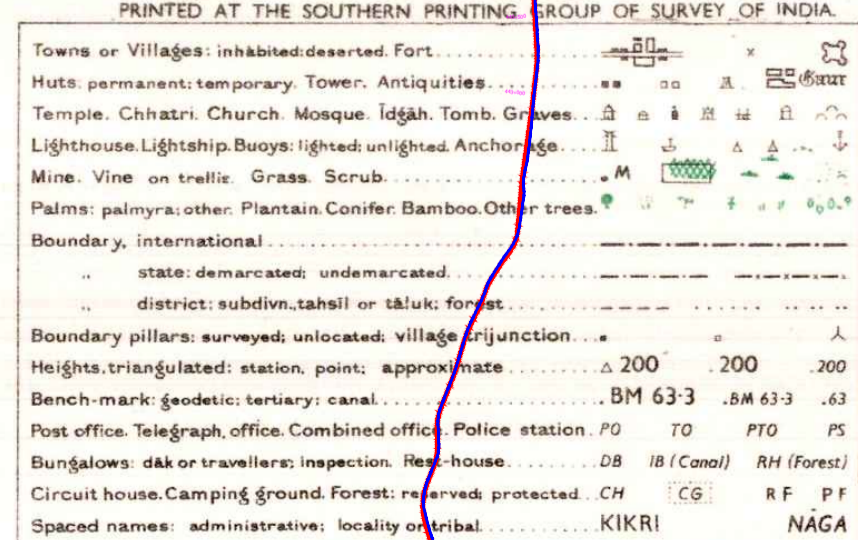
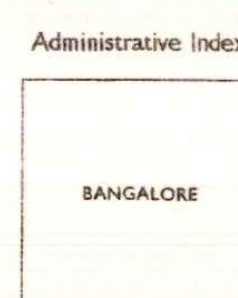
Magnetic Variation from True North about 2 1/2° West in 1970.
(Decreasing at about 1" annual).

No. 57 H/5



HEIGHTS AND CONTOURS IN METRES
CONTOUR INTERVAL 20 METRES

Contours are approximate.
A relative height, Δ , represents the approximate height, in metres, between the top and bottom of a steep slope.
Wooded areas are coloured green.
Scattered trees and other vegetation are in black.
The triangular heights and contours in this sheet have not been adjusted to the heights of the spirit-levelled bench-marks and may not be strictly in accordance with them.
Unsettled roads are shown as dashed lines.
The kilometre route numbers along roads and railways are shown in plain type, e.g., '1' whereas milestone numbers are shown in upright type, e.g., '5'.
Tanks shown Δ in this area usually contain water from July to December.
Temples with gopurams are shown Δ .



REFER TO THIS MAP AS:- I:50,000
SHEET 57 H/5 FIRST EDITION
INDIA

LEGEND:	
Existing Road	
Proposed Road	
Forest Boundary	

NOTES:			
1. All dimensions are in metres unless otherwise specified.			
2. Dimensions are not to be scaled and only written dimensions to be followed.			
REV	DATE	DESCRIPTION OF REVISIONS	BY

CLIENT:	
National Highways Authority of India (Ministry of Road Transport & Highways) Government of India	

CONSULTANT:	
FEEDBACK INFRA Making Infrastructure Happen	
The information contained herein is Confidential & Property of Feedback Infrastructure Services Pvt. Ltd. and not for Publication. The Information is issued on the Understanding that no part thereof shall be Copied or Communicated to a Third Party without Authorisation in Writing from Feedback Infrastructure Services Pvt. Ltd.	

Drawn by:	CHINNA
Designed by:	POOJA
Checked by:	LSP
Approved By:	ARJIT C
Scale: 1:50,000	Date: April 2017

STATUS:	FOREST DIVERSION PROPOSAL
PROJECT:	Proposal for Diversion of Forestland for 2 Lining with Paved Shoulder from Km 266.530 (proposed Km 266.530) of NH-209 at Karnataka / Tamil Nadu Border to Km 306.600 (proposed Km 307.810) near Channarayana section of NH 209 in the State of Karnataka
TITLE:	REQUIRED FOREST LAND ON 1:50,000 SOI TOPO SHEET
DRG NO.:	FVPLT/PT/0029/FTS-02
REV.	02 of 03
SHEET:	02 of 03

