

No. G44P6
 Scale 1:50,000

G44P1 (83G/1) Fatehpur UTTAR PRADESH	G44P5 (83G/5) Pratapgarh UTTAR PRADESH	G44P9 (83G/9) Pratapgarh UTTAR PRADESH
G44P2 (83G/2)	G44P6 (83G/6) Kaushambi UTTAR PRADESH	G44P10 (83G/10)
G44P3 (83G/3) Chitrakoot UTTAR PRADESH	G44P7 (83G/7)	G44P17 (83G/17) 1 Allahabad UTTAR PRADESH

PLOTTER PRINT

भारतीय सर्वेक्षण विभाग SURVEY OF INDIA

1st Edition 2011. Price : Rs. 70/-

CONVENTIONAL SYMBOLS

Double Highway, with toll; with bridge; with distance stone	
Road marked according to importance	
Road double cartways; according to importance	
Unimproved Road, Cart-track, Path-way and foot-path	
Stream with track in bed, unbridged, Canal	
Canal, masonry or rock-lined, earthwork, Well	
River dry with water channel with island & rocks, Tidal river	
Submerged rocks, Shoal, Swamp, Reeds	
Water: Broad, shallow, Tubewell, Spring, Tower, perennial, dry	
Embankment: road or wall, bank, broken ground	
Railways, broad gauge; double; single with distance stone; etc.	
Railways, other gauges; double; single with distance stone; etc.	
Mineral line or tramway, Kin. Cutting with tunnel	
Contours with sub-features, Rocky slopes, Cliff	
Grid features: (1) Grid-line (2) Grid-line (3) Grid-line	
Towns or Villages: Inhabited, deserted, Fort	
Note: permanent, temporary, Tower, Antenna, etc.	
Temple, Chhatra, Church, Mosque, Masjid, Tomb, Graves	
Lighthouse, Lightship, Buoy, Lighted, unlighted, Anchorages	
Mine, Vene on trees, Green, Scrub	
Forest: gamay, oak, Plantain, Conifer, Bamboo, Other trees	
Areas: cultivated, wooded, Surveyed, etc.	
Boundary, International	
Boundary, Pillar: surveyed, un-surveyed	
Boundary, Pillar: surveyed, un-surveyed	
Heights, triangulated, aneroid, peak, approximate	
Bench-mark: geodetic, levelling, aneroid	
Post office, Telegraph office, Overhead tank	
Post house or inspection bungalow, Guard house, Police station	
Camping ground, Forest: reserved, protected	
Special names: administrative, locality or tribal	
Hospital, Dispensary, Veterinary hospital, Dispensary	
Asylum, Hospital, Tourist site	
Power line, with poles surveyed; with poles un-surveyed	

Legend

Non Forest Land

Proposed Protected Forest Land to be diverted

REFERENCE
 AN 2 National Highway No. 2

NOTES

Heights are in meters and above Indian mean sea level.
 Contours are approximate.
 A relative height, e.g., 50, represents the approximate height, in meters, between the top and bottom of a steep slope.
 The ultrasonic wave returns along roads, railways and canal are shown in solid type, e.g., 's' whereas ultrasonic returns are shown in upright type, e.g., 'l'.
 Cart tracks and unimproved roads in this sheet are generally motorable in dry season. Permission to use these along canals is required from the Irrigation authorities.
 A relative height, e.g., 50, marked along a canal, indicates the height of the top of canal embankment above the adjacent country.
 The area adjacent the Ganga River is liable to change owing to continual fluctuations in the course of the river.
 Tanks, shown dry in this area, usually contain water from July to January.
 The district boundary in the Ganga River follows the main deep water channel and will change with the fluctuations of the channel.
 The triangulation & reserve heights and contours in this sheet have not been adjusted to the heights of the well-levelled bench-mark and may not be strictly in accordance with them.

COMPILATION INDEX

A Modern Survey 1875-76. Updated for major details during 2000-06 and administrative boundaries updated during 2000-08.

Projection - UTM Datum - WGS 84
 Magnetic Variation from True North about 0° in 2005. (Increasing by about 1° East annually).

Scale 1:50,000
 1 cm = 1 km
 1 inch = 2.54 cm

For further details about this map, please contact
 Director
 East Uttar Pradesh Geo-Spatial Data Centre
 Survey of India
 B-2 Block, 2nd Floor, PICUP Bhowan, Gomti Nagar, Lucknow.



(Parveen Kumar)
 Executive Engineer
 N.H. Division, P.W.D.
 Prayagraj

G44P5 (63G/5)	G44P9 (63G/9)	G44P13 (63G/13)
G44P6 (63G/6)	G44P10 (63G/10)	G44P14 (63G/14)
G44P7 (63G/7)	G44P11 (63G/11)	G44P15 (63G/15)

1 Fatehpur, UTTAR PRADESH.

भारतीय सर्वेक्षण विभाग SURVEY OF INDIA

1st Edition 2011. Price : Rs. 70/-

CONVENTIONAL SYMBOLS

Express highway with toll, with bridge with distance stone	
Roads, metalled, according to importance	
Roads, double carriageway, according to importance	
Unmetalled road, cart-track, track with pass, foot-path	
Streams with track in bed, underlined, canal	
Dams, masonry or rock filled, earthenwork, weir	
River, dry with water channel with island & rocks, tidal river	
Submerged rocks, shoal, swamp, reeds	
Wells, lined, unlined, tube-well, spring, tank, perennial dry	
Embankments, road or rail, tank, broken ground	
Railways, broad gauge, double, single with station, under construction	
Railways, other gauges, double, single with distance stone, double	
Mineral line or tramway, K.M. Cutting with tunnel	
Contours with sub-features, rocky slopes, cliffs	
Stair features (littoral, (Zisand-hill) (permanent), (S) (stone) (chilling))	
Towns or Villages, inhabited, deserted, Fort	
Huts, permanent, temporary, Tower, Antiquities	
Temples, Chhatra, Uthach, Mosque, Ishah, Tomb, Graves	
Lighthouses, Lightships, Buoys, lighted, unlighted, Anchorage	
Mine, Vene on bed, Grass, Scrub	
Palms, palmry, other, Platan, Conifer, Bamboo, Other trees	
Areas, cultivated, wooded, Surveyed	
Boundary, international	
state, demarcated, undemarcated	
Boundary pillars, surveyed, uncoloured	
Height, triangulated, station, point, approximate	
Bench-mark, geodetic, tertiary, canal	
Post office, Overhead tank	
Rest house or inspection bungalow, Circuit house, Police station	
Camping ground, Forest, reserved, protected	
Spaced names, administrative locality or trail	
Hospital, Dispensary, Veterinary, Hospital, Dispensary	
Aerodrome, Helipad, Tourist site	
Power line, with pole, surveyed, with poles unsurveyed	

Legend

Non Forest Land

Proposed Protected Forest Land to be diverted

REFERENCES

AH-2, National Highway No. 2

NOTES

Heights are in metres and above Indian mean sea level

Contours are approximate

A relative height, e.g. 50, represents the approximate height, in metres, between the top and bottom of a steep slope

Tanks shown dry in this sheet usually contain water from July to January

Unmetalled roads and cart-tracks in this sheet are generally motorable in any season. Permission to use these along canals is required from irrigation authorities

The kilometre scale numbers along roads, railways and canals are shown in black type, e.g. 5, whereas milestone numbers are shown in upright type, e.g. 75

The area adjoining the Ganga River is liable to change owing to continual fluctuations in the course of the river

The triangulated & traverse heights in this sheet have not been adjusted to the heights of the spirit levelled bench-marks and may not be strictly in accordance with them

The district and taluquas shown in this sheet have not been adjusted to the heights of the spirit levelled bench-marks and may not be strictly in accordance with them

The district and taluquas shown in this sheet have not been adjusted to the heights of the spirit levelled bench-marks and may not be strictly in accordance with them

The district and taluquas shown in this sheet have not been adjusted to the heights of the spirit levelled bench-marks and may not be strictly in accordance with them

COMPILED INDEX

A. Surveyed during 1972-73. Updated for major details during 2002-06, and administrative boundaries updated during 2007-08.

Projection - UTM Datum - WGS 84

Magnetic Variation from True North about 0° in 2005. (Increasing by about 1' annually)

Scale 1:50,000

500 m to 1 cm

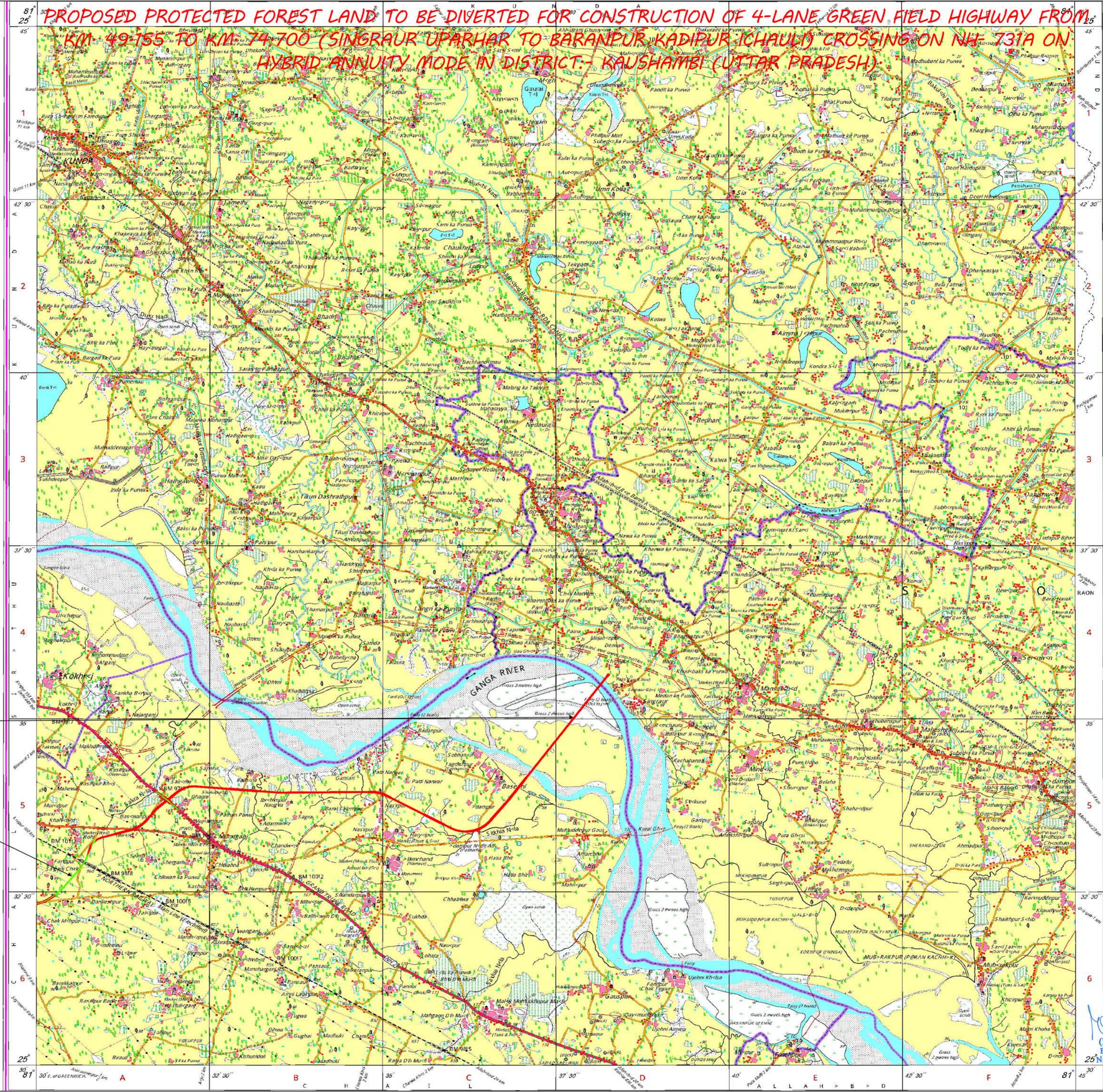
2 cm to 1 km

CONTOUR INTERVAL 20 METRES

For further details about this map please contact

Director
East Uttar Pradesh Geo-Spatial Data Centre
Survey of India
B-2 Block, 2nd Floor, PICUP Bhawan, Gombi Nagar, Lucknow.

WEBSITE - www.surveyofindia.gov.in



25/9/22

(Arveen Kumar)
Executive Engineer
Division, P.W.D.
Prayagraj