

निर्यात के लिए नहीं NOT FOR EXPORT

No. F42Q12

Scale 1:50,000

F42Q7 (41K/7)	F42Q11 (41K/11)	F42Q15 (41K/13)
F42Q8 (41K/8)	Jünägadh GUJARÄT F42Q12 (41K/12)	Amreli GUJARÄT F42Q16 (41K/16)
F42W5 (41L/5)	F42W9&10 (41L/9&10)	F42W13 (41L/13)

भारतीय सर्वेक्षण विभाग

SURVEY OF INDIA

1st Edition 2010.

Price : Rs. 70/-

### CONVENTIONAL SYMBOLS

Express highway: with toll; with bridge; with distance stone					
Roads, labelled: according to importance					
Roads, double: according to importance					
Unimproved road, Cart-track, Pack-track with pass, Foot-path					
Streams, with track in bed, undefined Canal					
Dams: masonry or rock-filled, earthen, Wall					
River, dry with water channel; with island or rocks. Tidal river					
Submerged rocks, Shoal, Swamp, Reeds					
Wells: lined, unlined, Tube-well, Spring, Tanks: perennial; dry					
Embankments: made or not; tank. Broken ground					
Railways, broad gauge: double, single with station; under constr.					
Railways, other gauge: double, single with distance stone, do.					
Mineral line or tramway, Kite, Cutting with tunnel					
Contours with sub-features: Rocky slopes, Cliffs					
Sea features: 1)flat (2)und hill-hatched (3)juncs(hill)ing					
Towns or villages: inhabited; deserted, Fort					
Huts: permanent; temporary, Tower, Antiquities					
Temple, Chhatra, Church, Mosque, Igloo, Tomb, Graves					
Lighthouse, Lighthouse, Buoy: lighted; unlighted, Anchorage					
Mine, Vine on hill, Grass, Scrub					
Palm; palmetto; other, Plantain, Conifer, Bamboo, Other trees					
Areas: cultivated; wooded, Surveyed tree					
Boundary, International					
state; demarcated; unascertained					
district; subdivision; tribal or tribal; forest					
Boundary pillar: surveyed; unlocated					
Heights, triangulated station; point, approximate					
Birth-mark: geographic; tertiary; canal					
Post office, Overhead tank					
Rest house or Inspection bungalow, Circuit house, Police station					
Camping ground, Forest: reserved; protected					
Spaced names: administrative, local or tribal					
Hospital, Dispensary, Veterinary, Hospital or Dispensary					
Aerodrome, Helpaid, Tourist site					
Power line, with poles surveyed; with poles unsurveyed					

**Proposal for Underground  
Drinking Water Pipeline  
Diversion area 0.0554 ha.**

NOTES :-

Heights and Contours have not been shown.  
A relative height,  $\Delta$ , represents the approximate height, in metres, between the top and bottom of a steep slope.  
Tanks, shown dry, in this area usually contain water from July to September.  
Cultivation is periodic and dependent on rainfall.  
Gir Reserved Forest area is not included in any taluk.

## COMPILATION INDEX

A. Surveyed during 1962-63. Updated for major details during 2005-06.

Projection - UTM      Datum - WGS 84

Magnetic Variation from True North about  $\frac{1}{4}^{\circ}$  West in 2005.  
(Decreasing by about  $1^{\circ}$  annually).

1:50,000

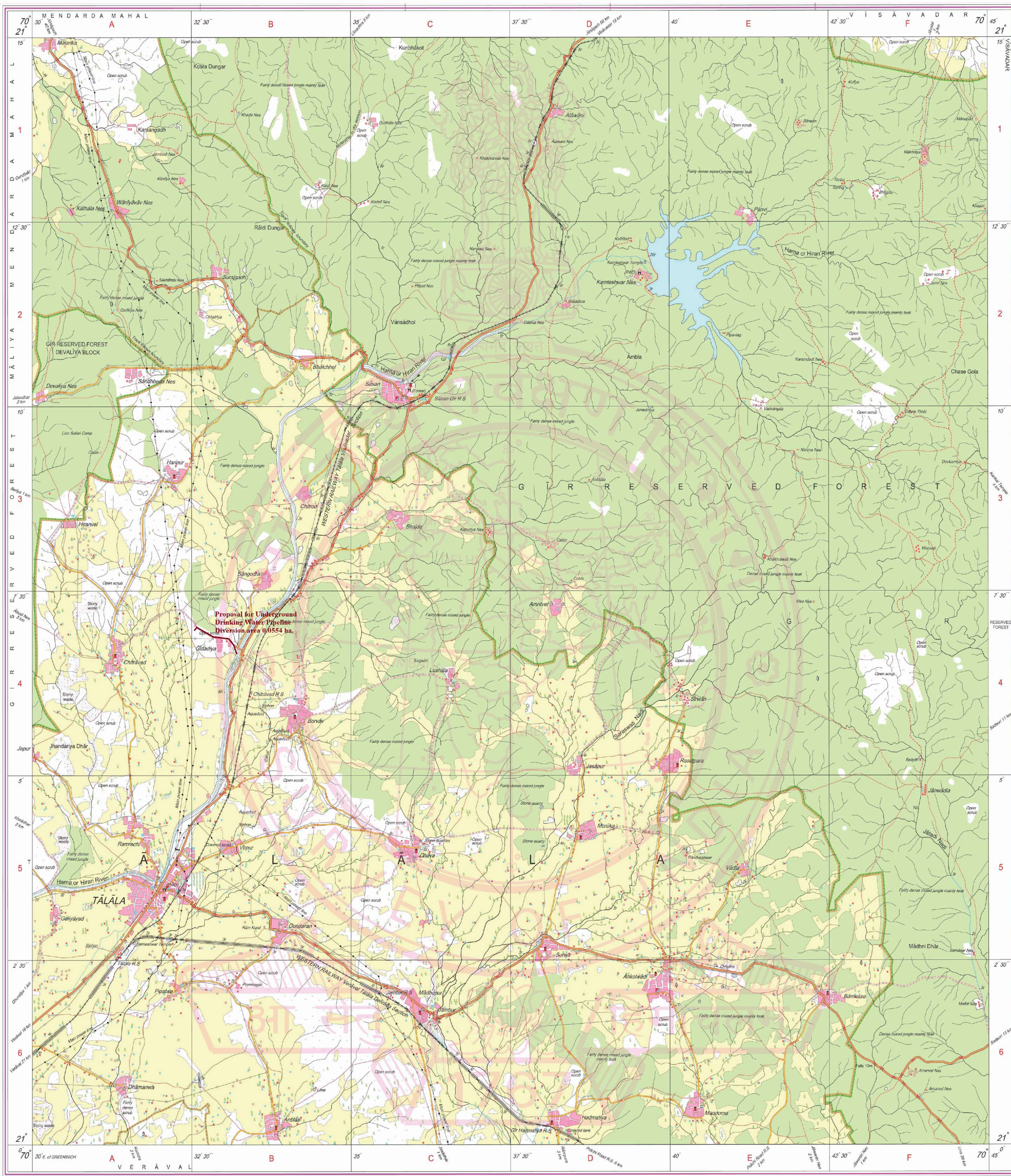
Metres 1000      500      0      1      2      3 Kilometres

For further details about this map, please contact  
Director  
Karāt, Damān & Diu Geo-Spatial Data C  
Survey of India, Sector-10(A)  
Gāndhīnagar.

WEBSITE - [www.surveyofindia.gov.in](http://www.surveyofindia.gov.in)

*Reproduction in whole or part by any means is prohibited without the written permission of Survey of India, the National Mapping Agency.*

GOVERNMENT OF INDIA COPYRIGHT, 2010.



REG. No. 9635 -SPG D'11 (GD&D GDC-1:50,000)-1508\* 15

भारत के महासूचक, स्वर्ण सुब्बा राव, पी०ई०, के निदेश में प्रकाशित,  
Published under the direction of Swarna Subba Rao, B.E., Surveyor General of India,  
Survey of India, Hāthibarkala Estate, Post Box No.37, Dehra Dūn-248001 (Uttarākhānd)  
Department of Science & Technology, Government of India.

PRINTED AT THE SOUTHERN PRINTING GROUP OF SURVEY OF INDIA